

# 1-Watt SMD 6 mm (120° Viewing Angle)

## OVSPxBCR4 Series



### Features:

- Robust energy-efficient design with long operating life
- Low thermal resistance
- High luminous intensity
- Optional optics to suit application



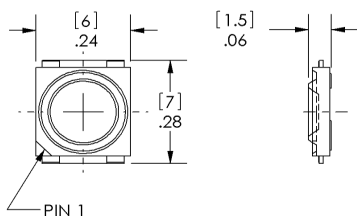
### Description:

The OVSPxBCR4 Series is an energy-efficient packaged LED source that offers high luminance, and a long operating lifespan. These devices offer a 120° viewing angle and an ultra-low profile (1.5mm) making them highly suitable for conventional lighting and specialized applications. Optional optics are offered to suit application. Please contact OPTeK for more information.

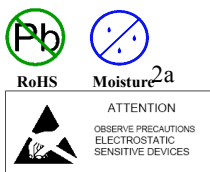
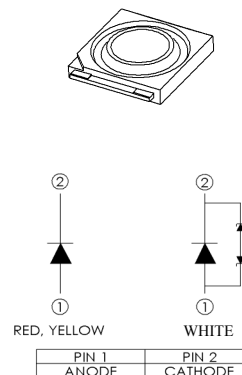
### Applications:

- Automotive exterior and interior lighting
- Architectural indoor and outdoor lighting
- General lighting
- Electronic signs and signals

Part Number	Viewing Angle	Material	Emitted Color	Typical Luminous Flux (lm)	Lens Color
OVSPRBCR4	120°	AllnGaP	Red	42	Water Clear
OVSPYBCR4		AllnGaP	Yellow	34	Water Clear
OVSPW1BCR4		InGaN	White	90	Water Clear



DIMENSIONS ARE IN INCHES [MM]  
GENERAL TOLERANCES ±.004 [ 0.10]



**DO NOT LOOK DIRECTLY AT LED WITH UNSHIELDED EYES OR DAMAGE TO RETINA MAY**

### General Note

TT Electronics reserves the right to make changes in product specification without notice or liability. All information is subject to TT Electronics' own data and is considered accurate at time of going to print.

TT Electronics | Optek Technology, Inc.  
1645 Wallace Drive, Ste. 130, Carrollton, TX USA 75006 | Ph: +1 972 323 2200  
www.ttelectronics.com | sensors@ttelectronics.com

# 1-Watt SMD 6 mm (120° Viewing Angle)

## OVSPxBCR4 Series



### Electrical Specifications

Absolute Maximum Ratings (T <sub>A</sub> = 25° C unless otherwise noted)		
	Red, Yellow	White
DC Forward Current	400mA	350mA
Peak Pulsed Forward Current <sup>1</sup>	500mA	1000mA
Reverse Voltage	12V	Not designed for reverse bias
Junction Temperature <sup>2</sup>	125°C	150°C
Power Dissipation	1200mW	1200mW
Storage and Operating Temperature	-40° ~ +100 ° C	-40° ~ +100 ° C
MSL Level (IPC/JEDEC J-STD-020C)	2a / 672 Hrs	2a / 672 Hrs
ESD Threshold (HBM)	Class 2	Class 2

#### Optical and Electrical Characteristics—Red, Yellow (I<sub>F</sub> = 400 mA, T<sub>A</sub> = 25° C)

SYMBOL	PARAMETER	MIN	TYP	MAX	UNITS	
V <sub>F</sub>	Forward Voltage	2.2	2.5	2.8	V	
Φ	Luminous Flux	Red	33	42	54	lm
		Yellow	27	34	42	lm
λ <sub>D</sub>	Dominant Wavelength	Red	620	625	630	nm
		Yellow	585	591	597	nm
I <sub>R</sub>	Reverse Current	----	100	----	μA	
2 Θ½	50% Power Angle	----	120	----	deg	

#### Optical and Electrical Characteristics—White (I<sub>F</sub> = 350 mA, T<sub>A</sub> = 25° C)

SYMBOL	PARAMETER	MIN	TYP	MAX	UNITS
V <sub>F</sub>	Forward Voltage	3.0	3.5	4.0	V
Φ	Luminous Flux	67	90	113	lm
2 Θ½	50% Power Angle	----	120	----	deg

#### General Note

TT Electronics reserves the right to make changes in product specification without notice or liability. All information is subject to TT Electronics' own data and is considered accurate at time of going to print.

TT Electronics | Optek Technology, Inc.  
1645 Wallace Drive, Ste. 130, Carrollton, TX USA 75006 | Ph: +1 972 323 2200  
www.ttelectronics.com | sensors@ttelectronics.com

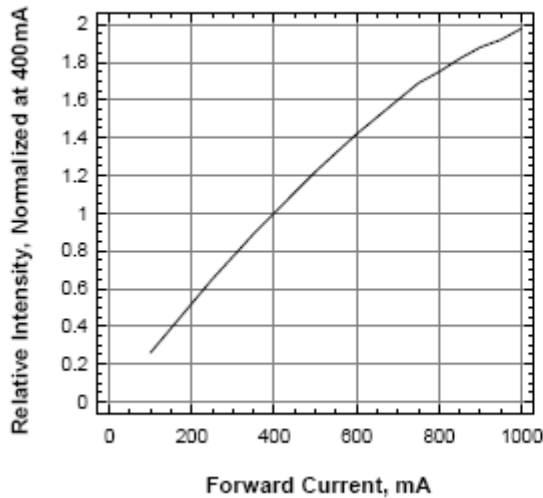
# 1-Watt SMD 6 mm (120° Viewing Angle)



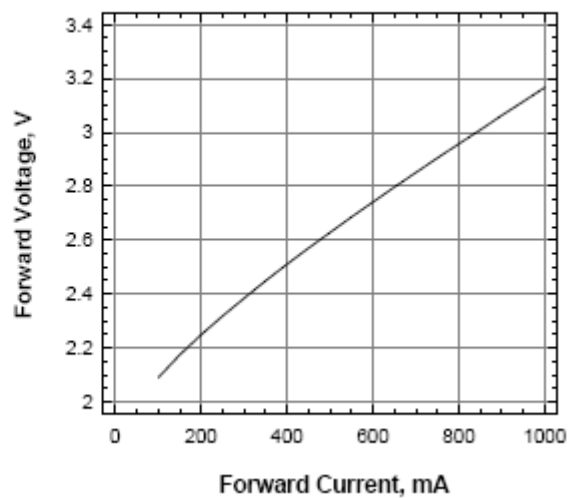
## OVSPxBCR4 Series

### Typical Electro-Optical Characteristics Curves—Red, Yellow

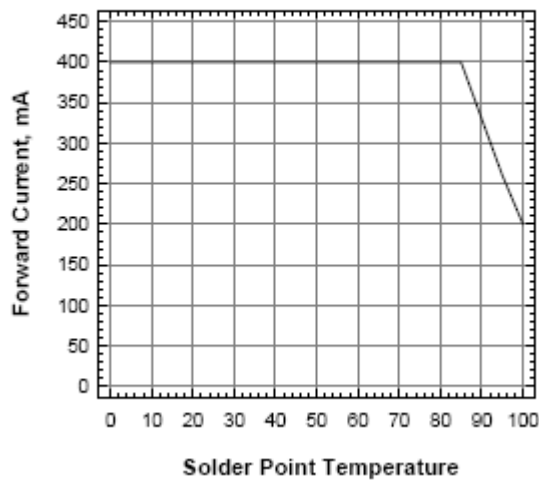
Relative Intensity Vs Forward Current



Forward Voltage Vs Forward Current



Maximum Current Vs Solder Point Temperature



#### General Note

TT Electronics reserves the right to make changes in product specification without notice or liability. All information is subject to TT Electronics' own data and is considered accurate at time of going to print.

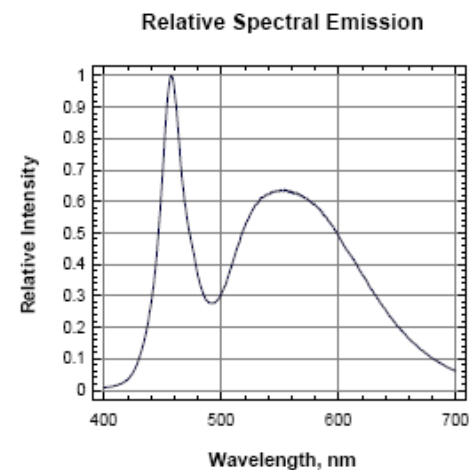
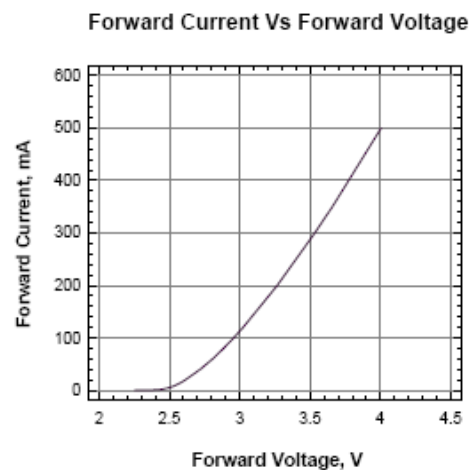
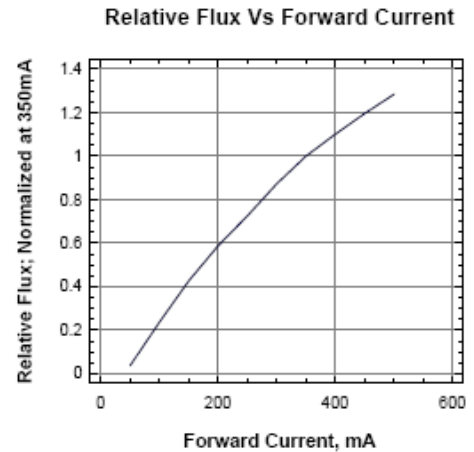
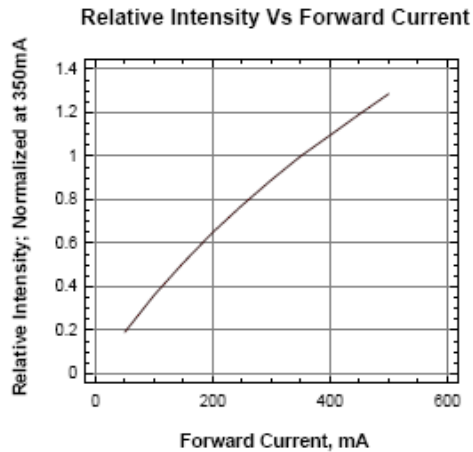
TT Electronics | Optek Technology, Inc.  
1645 Wallace Drive, Ste. 130, Carrollton, TX USA 75006 | Ph: +1 972 323 2200  
www.ttelectronics.com | sensors@ttelectronics.com

# 1-Watt SMD 6 mm (120° Viewing Angle)

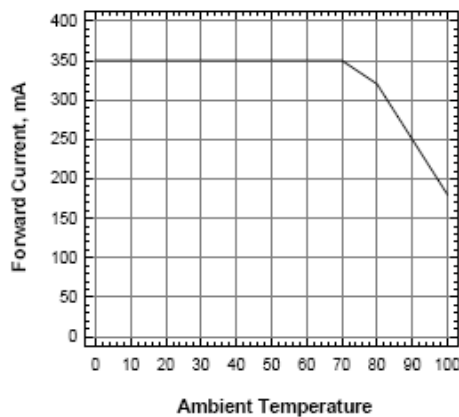
OVSPxBCR4 Series



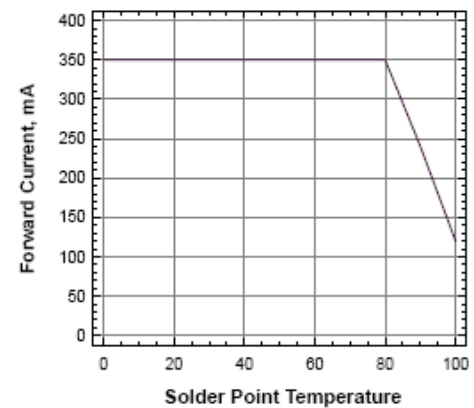
## Typical Electro-Optical Characteristics Curves—White



**Forward Current Vs Ambient Temperature (R<sub>ja</sub>=40K/W)**



**Forward Current Vs Solder Point Temperature**



**General Note**

TT Electronics reserves the right to make changes in product specification without notice or liability. All information is subject to TT Electronics' own data and is considered accurate at time of going to print.

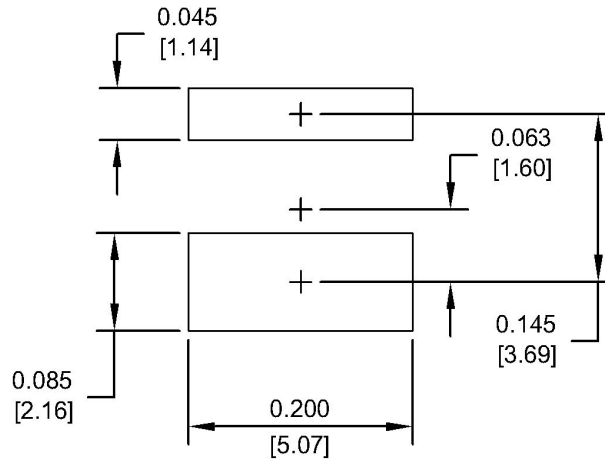
TT Electronics | Optek Technology, Inc.  
 1645 Wallace Drive, Ste. 130, Carrollton, TX USA 75006 | Ph: +1 972 323 2200  
[www.ttelectronics.com](http://www.ttelectronics.com) | [sensors@ttelectronics.com](mailto:sensors@ttelectronics.com)

# 1-Watt SMD 6 mm (120° Viewing Angle)

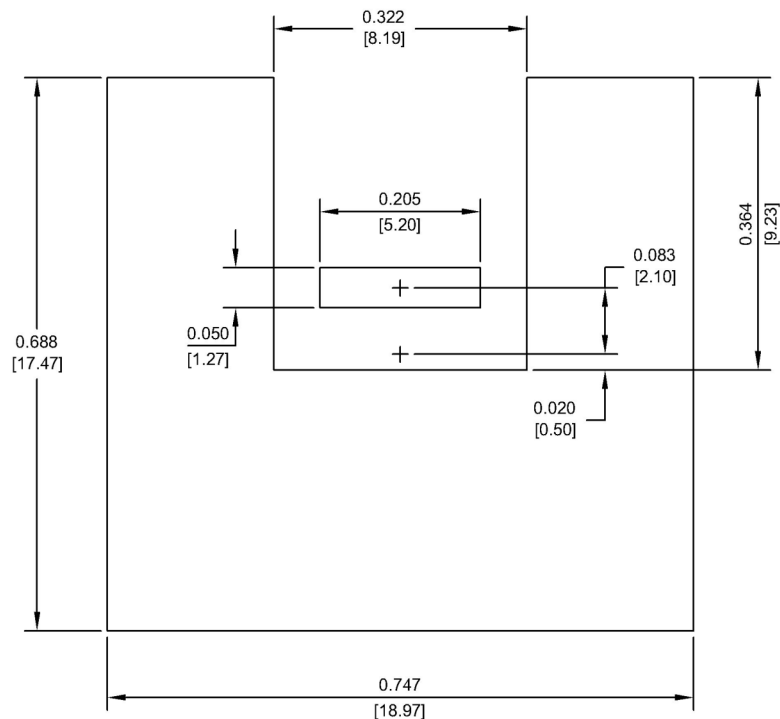
## OVSPxBCR4 Series

### Solder Pad Design

Metal core circuit board (MCPCB) is highly recommended for high density applications.



### Solder Paste Pattern



### Copper Pattern

General Note  
TT Electronics reserves the right to make changes in product specification without notice or liability. All information is subject to TT Electronics' own data and is considered accurate at time of going to print.

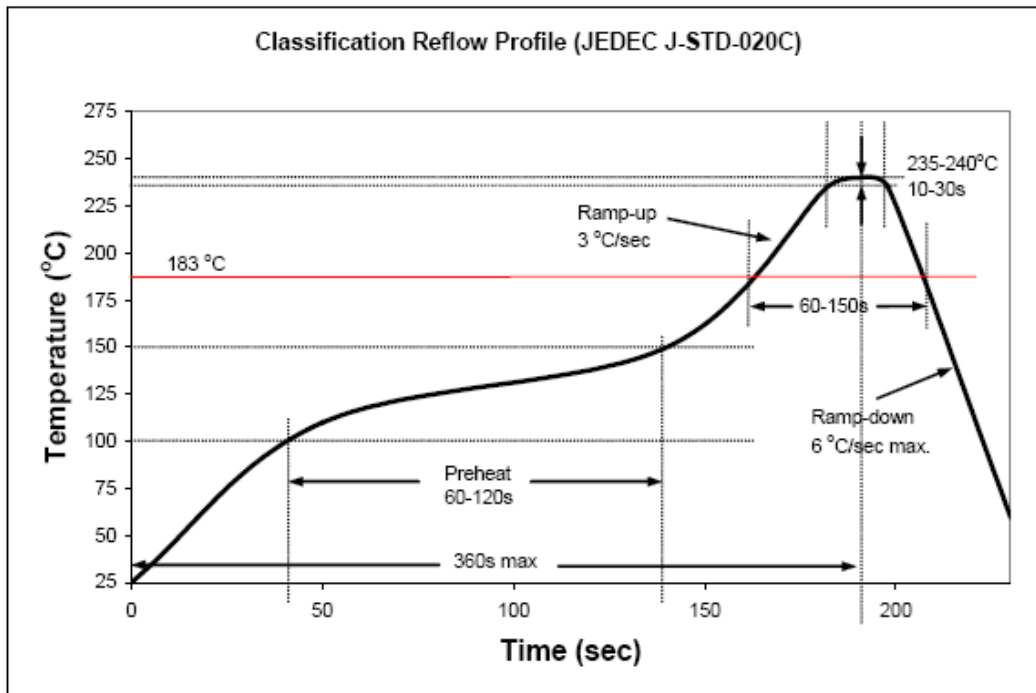
TT Electronics | Optek Technology, Inc.  
1645 Wallace Drive, Ste. 130, Carrollton, TX USA 75006 | Ph: +1 972 323 2200  
www.ttelectronics.com | sensors@ttelectronics.com

# 1-Watt SMD 6 mm (120° Viewing Angle)

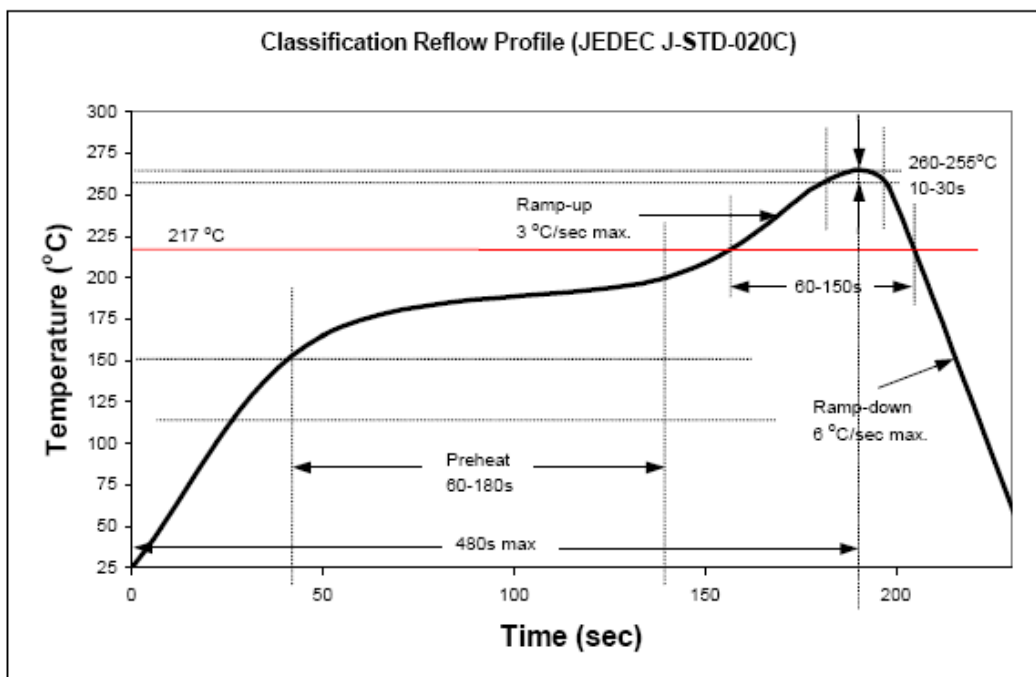


## OVSPxBCR4 Series

### Recommended Sn-Pb IR-Reflow Soldering Profile.



### Recommended Pb Free IR-Reflow Soldering Profile.



#### General Note

TT Electronics reserves the right to make changes in product specification without notice or liability. All information is subject to TT Electronics' own data and is considered accurate at time of going to print.

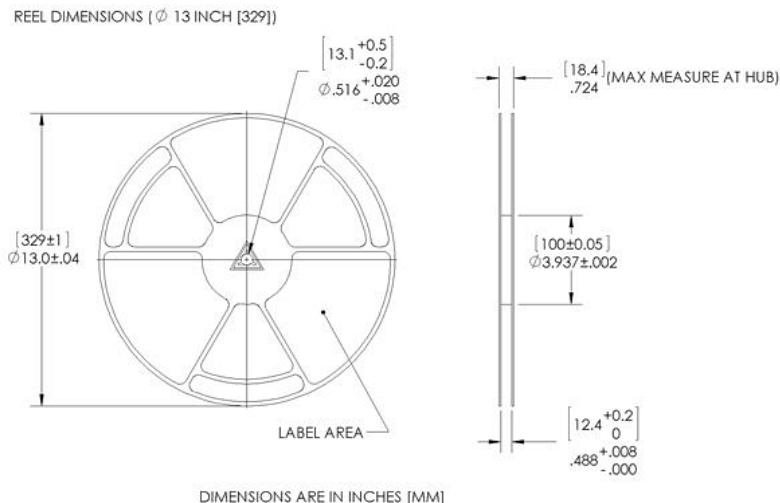
TT Electronics | Optek Technology, Inc.  
1645 Wallace Drive, Ste. 130, Carrollton, TX USA 75006 | Ph: +1 972 323 2200  
www.ttelectronics.com | sensors@ttelectronics.com

# 1-Watt SMD 6 mm (120° Viewing Angle)

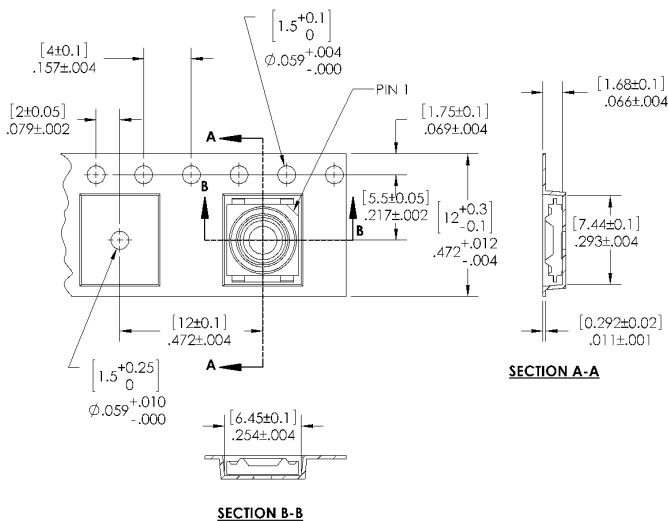


## OVSPxBCR4 Series

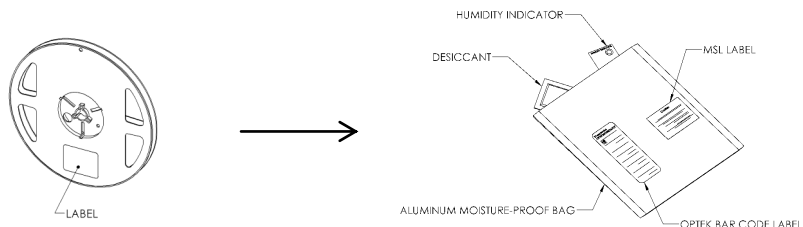
### Reel Dimensions: 13 - inch reel



### Carrier Tape Dimensions: Loaded quantity 2000 pieces per reel



### Moisture Resistant Packaging



#### General Note

TT Electronics reserves the right to make changes in product specification without notice or liability. All information is subject to TT Electronics' own data and is considered accurate at time of going to print.

TT Electronics | Optek Technology, Inc.  
1645 Wallace Drive, Ste. 130, Carrollton, TX USA 75006 | Ph: +1 972 323 2200  
www.ttelectronics.com | sensors@ttelectronics.com

# Mouser Electronics

Authorized Distributor

Click to View Pricing, Inventory, Delivery & Lifecycle Information:

[TT Electronics:](#)

[OVSPRBCR4](#)