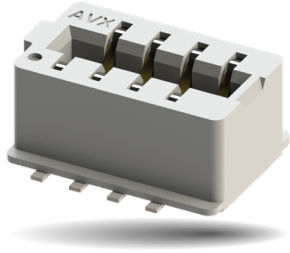


Vertical Dual Row Top Entry Card Edge

9159-650

GENERAL DESCRIPTION



KYOCERA AVX Interconnect continues to develop unique connectors to fill the gap in the market. An addition to KYOCERA AVX's broadening line of one piece card edge connectors is the 4p-12p dual row top entry version 9159-650, which is an extension of our popular single row version 9159-550. This new configuration with staggered dual row contacts will allow doubled number of positions in similar size of the connector. Available in both without and with polarization where the mating PCB layout is modified to form a key, to avoid wrong insertion to the connector.

This small connector is packed with several key features that provide significant functionality in a broad range of applications. The proven contact system is gold plated for enhanced reliability, signal integrity and up to 2A/contact current rating. The connector is designed for mating PCB board with 1.6mm thickness and gold plated pads.

APPLICATIONS

Provides a one piece connector solution for perpendicular PCB mating in applications:

- Automotive & Transportation
- Industrial
- Lighting

Product Specification: Refer to 201-01-226

Application Notes: Refer to 201-01-227

FEATURES AND BENEFITS

- Up to 2 Amps per contact current rating meets robust application requirements
- Doubled number of positions with dual row solution
- Optional kapton tape version supports pick and place robotic placement and SMT termination
- Available version with polarization where the mating PCB layout is modified to form a key, to avoid error during insertion
- Gold plated BeCu contact system for high reliability in harsh environments
- Halogen-Free

ELECTRICAL

- Current Rating: See Table Below
- Voltage Rating: 300 VAC (RMS) or DC Equivalent

ENVIRONMENTAL

- Operating Temperature: -40°C to +125°C
- Storage Temperature: -40°C to +60°C

MECHANICAL

- Insulator Material: High temperature Nylon UL94V-0 rated
- Contact Material: Beryllium Copper
- Plating: Gold / Tin over Nickel
- Durability: 10 Cycles

HOW TO ORDER

00	9159	0XX	65X	9	0	6																							
Prefix	Series	No. of Ways	Double Sided Thru Board Card Edge	Insulator Color	Keying	Plating Options																							
			651 = with Kapton Tape 653 = without Kapton Tape		0 = Without keying 1 = With keying	6 = Gold plating on nose with Tin on Tails																							
		<table border="1"> <thead> <tr> <th>Code</th> <th>Size</th> <th>Contacts</th> </tr> </thead> <tbody> <tr> <td>004</td> <td>2x2</td> <td>4</td> </tr> <tr> <td>006</td> <td>2x3</td> <td>6</td> </tr> <tr> <td>008</td> <td>2x4</td> <td>8</td> </tr> <tr> <td>010</td> <td>2x5</td> <td>10</td> </tr> <tr> <td>012</td> <td>2x6</td> <td>12</td> </tr> </tbody> </table>	Code	Size	Contacts	004	2x2	4	006	2x3	6	008	2x4	8	010	2x5	10	012	2x6	12	<table border="1"> <thead> <tr> <th>Code</th> <th>Color</th> <th>Application</th> </tr> </thead> <tbody> <tr> <td>9</td> <td>White</td> <td>UL Approved Standard</td> </tr> </tbody> </table>	Code	Color	Application	9	White	UL Approved Standard		
Code	Size	Contacts																											
004	2x2	4																											
006	2x3	6																											
008	2x4	8																											
010	2x5	10																											
012	2x6	12																											
Code	Color	Application																											
9	White	UL Approved Standard																											

Safety Standards: UL 1977-File #E90723

Current Rating	
No. of Positions	Current
4 pos	2A
6 pos	1.75A
8 pos	1.75A
10 pos	1.5A
12 pos	1.25A



SALES DRAWINGS
CLICK TO VIEW

Mouser Electronics

Authorized Distributor

Click to View Pricing, Inventory, Delivery & Lifecycle Information:

[KYOCERA AVX:](#)

[009159010653916](#) [009159012653906](#) [009159010653906](#) [009159006653906](#) [009159008653916](#)
[009159004653906](#) [009159008653906](#)