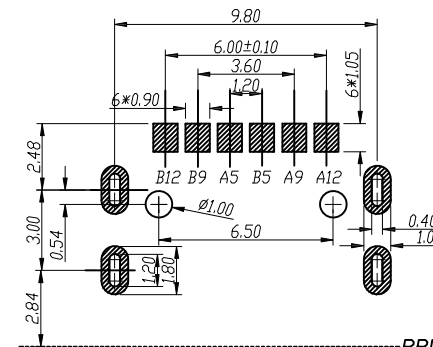
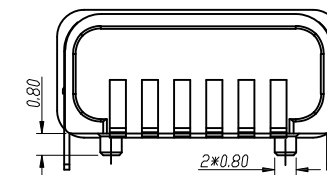
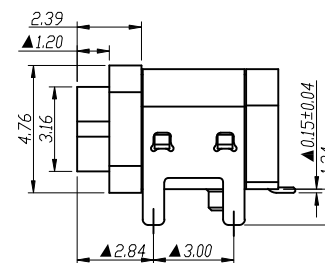
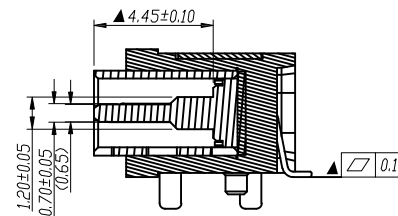
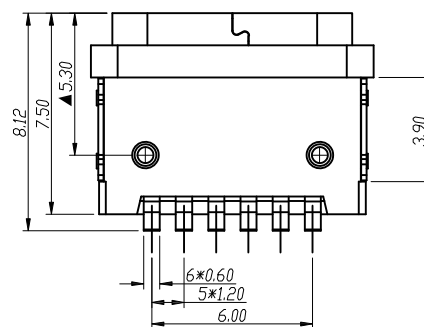
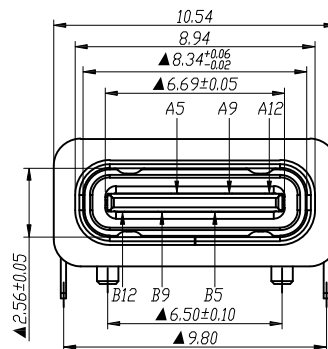
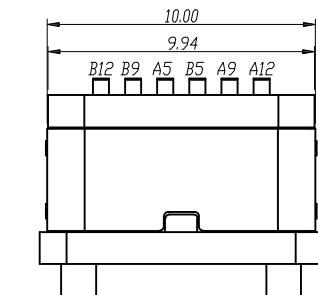
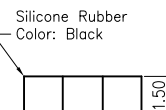
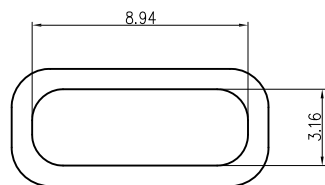
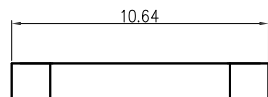
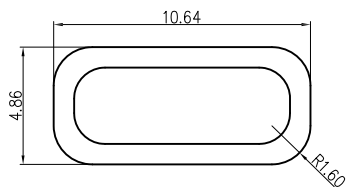


APPROVED: _____

DATE: _____ TITLE: _____

Rev	AWO #	Description	Date	Appr
-		RELEASED	4/7/22	
A		UPDATE TITTLE	8/19/24	LH/RC



RECOMMENDED PCB LAYOUT

PRODUCT EDGE

A5	CC1	B12	GND
A9	VBUS	B9	VBUS
A12	GND	B5	CC1
PIN	SIGNAL NAME	PIN	SIGNAL NAME

SPECIFICATIONS:

Material:

Insulator: Hi-temp thermoplastic, rated UL 94V-0

Insulator color: Black

Contacts: Brass

Shell: SUS201, Nickel plated

Plating:

Gold flash over Nickel underplate on contact area

Tin over Nickel underplate on solder tails

Electrical:

Voltage rating: 30V

Current rating: 3A(VBUS), 1.25A(GND), 0.25A(Other Pin)

Contact resistance: 40 mohms Max

Insulation resistance: 100 Mohms min.

Dielectric withstanding: 100 VR.M.S.

Mechanical:

Mating force: 0.51~2.04Kg

Unmated force: 0.51~2.04 Kg

Durability: 10,000 Cycles

Temperature Rating:

Operating temperature: -20°C ~ +85°C

Environmental:

Waterproof requirement: IP68

Lead free, RoHS compliant.



PACKAGED ON TAPE & REEL

UNLESS OTHERWISE SPECIFIED ALL DIMENSIONS ARE MILLIMETERS. TOLERANCES: EXCEPT AS NOTED

MM	ANGLE
.X ± .30	X. ±10°
.XX ± .20	.X ±8°
.XXX ± .10	.XX ±5°

DRAWN	WX	4/7/22
CHECKED	LW	4/7/22
APPROVED		

THIS DRAWING CONTAINS INFORMATION THAT IS PROPRIETARY AND SHOULD NOT BE USED WITHOUT PRIOR WRITTEN PERMISSION FROM ADAM TECH

ADAM
TECH

909 Rahway Avenue,
Union, NJ 07083
Phone: 908-687-5000
Fax: 908-687-5710

TITLE
**UNIVERSAL SERIAL BUS, TYPE C, RECEPTACLE
RIGHT ANGLE SMT, POWER, 6P, IP68**

SIZE X	PART NO. USB-C20-S-RA-CS22B-SMT-WP-BK-T/R	REV. A
-----------	--	-----------

REF: S00181C SCALE: NTS SHEET 1 OF 1

Mouser Electronics

Authorized Distributor

Click to View Pricing, Inventory, Delivery & Lifecycle Information:

[Adam Tech:](#)

[USB-C20-S-RA-CS22B-SMT-WP-BK-TR](#)