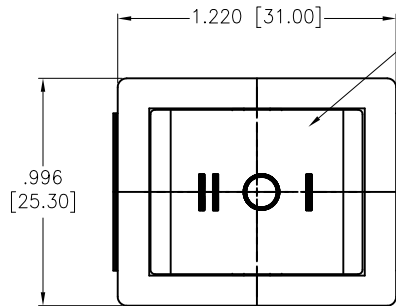


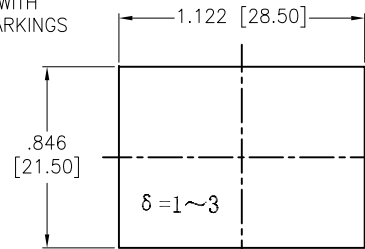
APPROVED: _____

DATE: _____ TITLE: _____

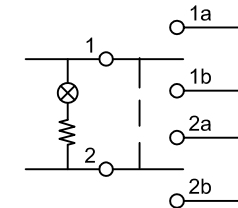
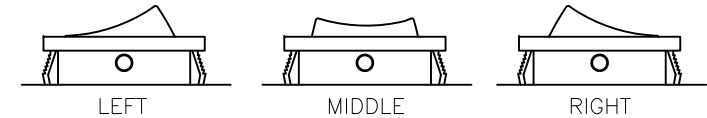
Rev	AWO #	Description	Date	Appr
-		RELEASED	11/18/21	



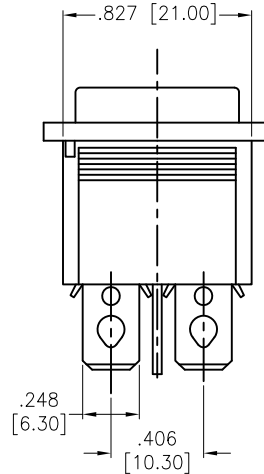
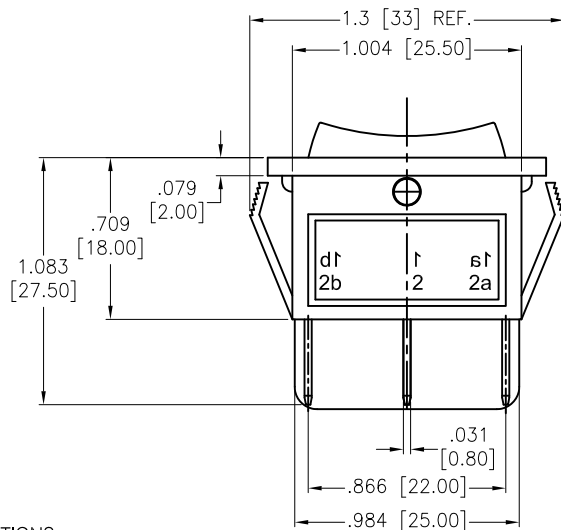
LIGHTED WITH
WHITE MARKINGS



RECOMMENDED
PANEL CUT-OUT



CIRCUIT DIAGRAM
(DPDT) ON-OFF-ON



SW-R1-4E-E-LXXX-0

	Lighted Actuator
W	Lighted White
R	Lighted Red
G	Lighted Green
Y	Lighted Yellow (Amber)
B	Lighted Blue
O	Lighted Orange

	Actuator Markings
6	

	LED Voltage
1	3V
2	6V
3	12V
4	24V
5	48V
6	110V
7	220V

SPECIFICATIONS:

Body: Nylon 66, Color Black, Rated UL 94V-0

Terminal: Brass, Silver plated

Button: Nylon 66, Lighted color (See Chart). White color markings

Electrical:

The rated load: 12A 250VAC T85(Res)

15A 250VAC T85/55 1E4

16(6)A 250VAC

20A 125VAC

Contact resistance: 50 mohms max

Insulation resistance: 100 Mohms min

Dielectric withstanding voltage: 1500 VAC/5S min

Mechanical:

Electrical life: 10000 Cycles min

Temperature Rating:

Operating temperature: -25°C to +85°C

Environmental:

Lead free, RoHS compliant



Replace "x" in P/N with the corresponding switch color and marking

UNLESS OTHERWISE SPECIFIED ALL DIMENSIONS
ARE INCHES [MM]. TOLERANCES: EXCEPT AS NOTED

INCHES	HOLES
.X ± .10	Ø.X ± .10
.XX ± .020	Ø.XX ± .015
.XXX ± .015	Ø.XXX ± .010

DRAWN	WX	11/18/21
CHECKED	RC	11/18/21
APPROVED		

THIS DRAWING CONTAINS INFORMATION THAT IS PROPRIETARY
AND SHOULD NOT BE USED WITHOUT PRIOR WRITTEN
PERMISSION FROM ADAM TECH

ADAM
TECH

909 Rahway Avenue,
Union, NJ 07083
Phone: 908-687-5000
Fax: 908-687-5710

TITLE
SWITCH, MEDIUM ROCKER, DPDT,
ON-OFF-ON, QC .250 [6.35MM], LIGHTED

SIZE X	PART NO. SW-R1-4E-E-LXXX-0	REV. -
-----------	-------------------------------	-----------

REF: S00206C	SCALE: NTS	SHEET 1 OF 1
--------------	------------	--------------

Mouser Electronics

Authorized Distributor

Click to View Pricing, Inventory, Delivery & Lifecycle Information:

[Adam Tech:](#)

[SW-R1-4E-E-LR63-0](#) [SW-R1-4E-E-LR13-0](#)