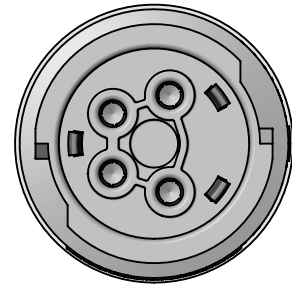
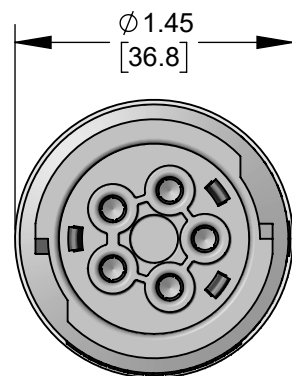


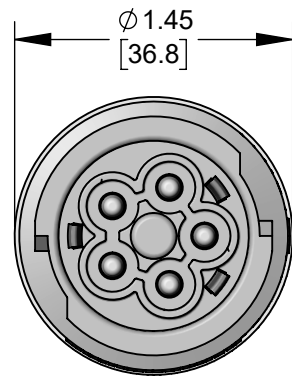
EP7L3F10
3-POLE FEMALE



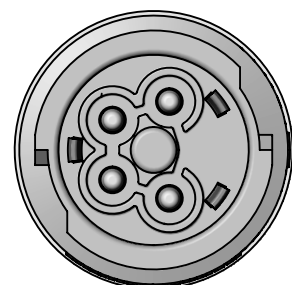
EP7L4F10
4-POLE FEMALE



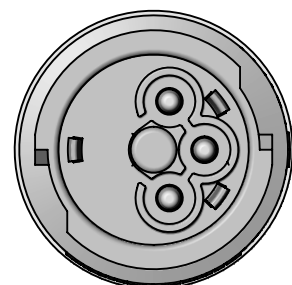
EP7L5F10
5-POLE FEMALE



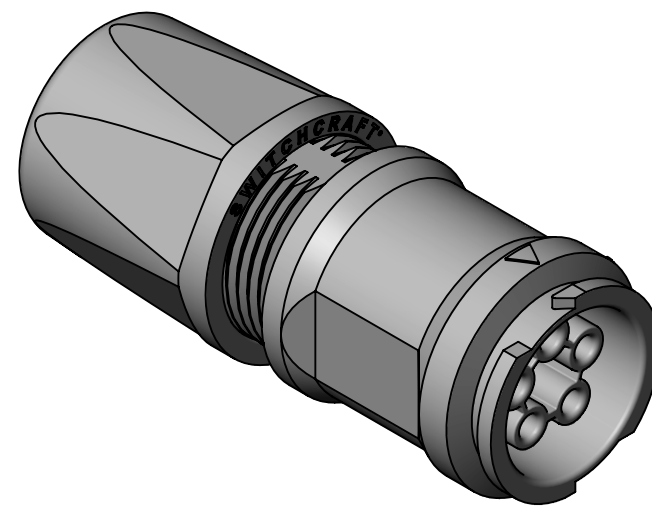
EP7L5M10
5-POLE MALE



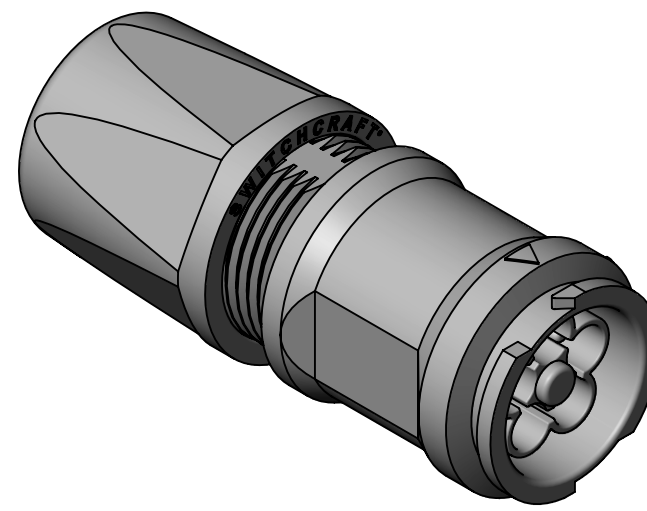
EP7L4M10
4-POLE MALE



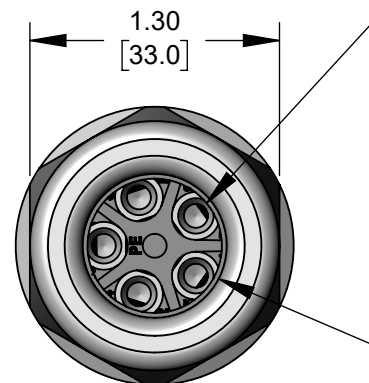
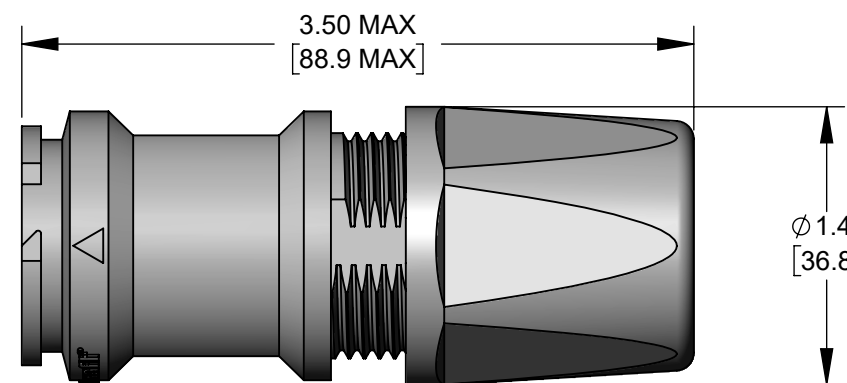
EP7L3M10
3-POLE MALE



EP7L5F10C SHOWN

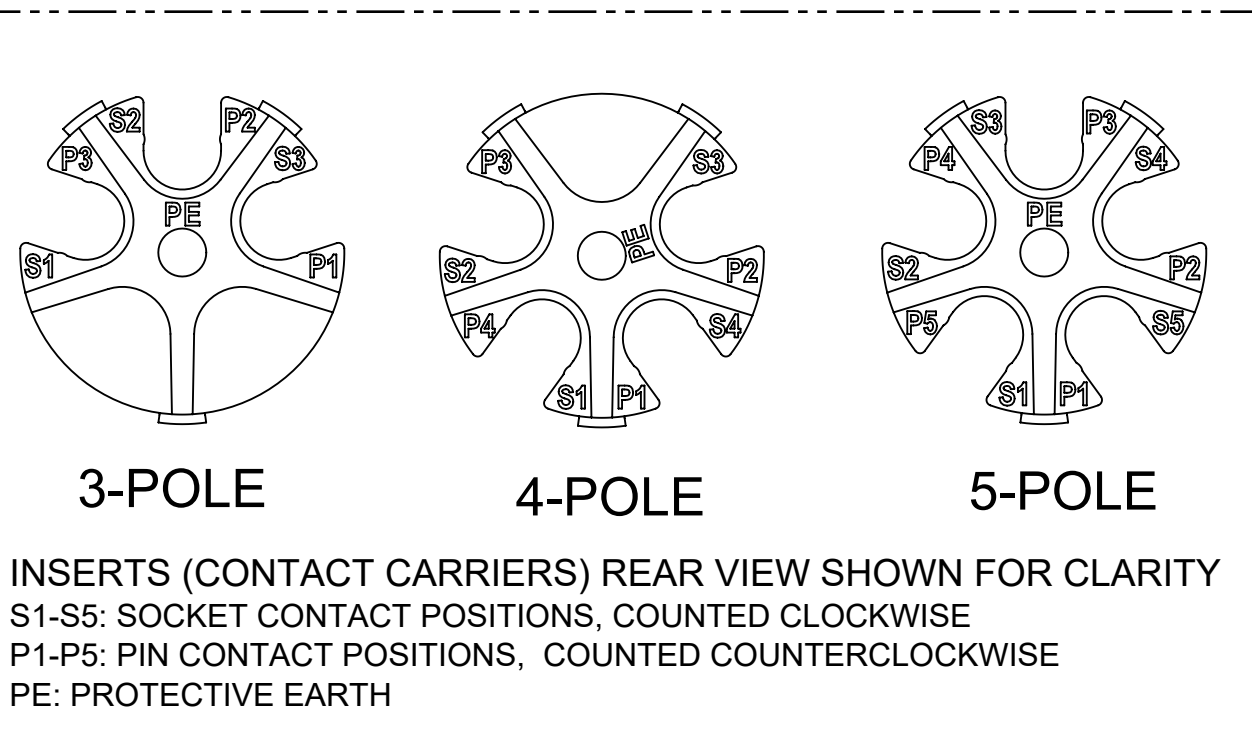
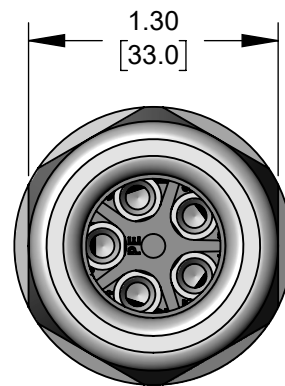
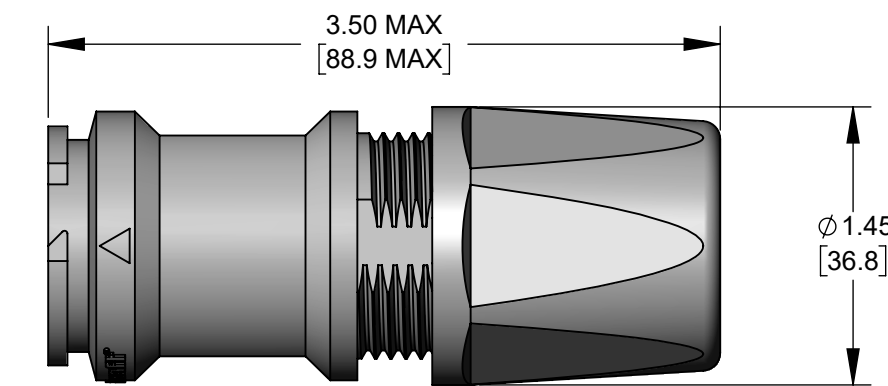


EP7L5M10C SHOWN



GROMMET I.D., TYPICAL:
SIZE A: 0.500 [12.7] DIA.
SIZE B: 0.600 [15.2] DIA.
SIZE C: 0.700 [17.8] DIA.

BACK NUT I.D., TYPICAL:
0.65 [16.5] - USED WITH GROMMET SIZE A
0.75 [19.0] - USED WITH GROMMET SIZE B OR C



INSERTS (CONTACT CARRIERS) REAR VIEW SHOWN FOR CLARITY
S1-S5: SOCKET CONTACT POSITIONS, COUNTED CLOCKWISE
P1-P5: PIN CONTACT POSITIONS, COUNTED COUNTERCLOCKWISE
PE: PROTECTIVE EARTH

EP7 L 10

EP7 SERIES
L - CABLE-TO-CABLE CONNECTOR

OF CONTACTS:
3-5 #10

GENDER:
M - MALE (PIN)
F - FEMALE (SOCKET)

KIT PACKAGING OPTION:
K - ONE UNIT / BAG

GROMMET SIZE - CABLE O.D. RANGE:
A - 0.375 - 0.500 [9.5 - 12.7]
B - 0.500 - 0.600 [12.7 - 15.2]
C - 0.600 - 0.700 [15.2 - 17.8]

CONTACT SIZE - (WIRE SIZES):
10 - (10, 12, 14 AWG)

REFER TO "EP7C SERIES" DRAWING FOR MATING CABLE-END CONNECTORS.

Table with columns for MECHANICAL, ELECTRICAL, ENVIRONMENTAL, and MATERIAL specifications. Includes details like Mating/Locking Type, Voltage Rating, and Material types.

Table showing Current Rating (A) at Operating Temperature (°C) for various contact and wire configurations. Includes columns for 45°C max, 65°C max, 85°C max, 100°C max, and 110°C max.

*Temperature Rise does not exceed 30°C when tested according to UL2238. All other recommended current ratings are based on the Relative Thermal Index of the insulating material.

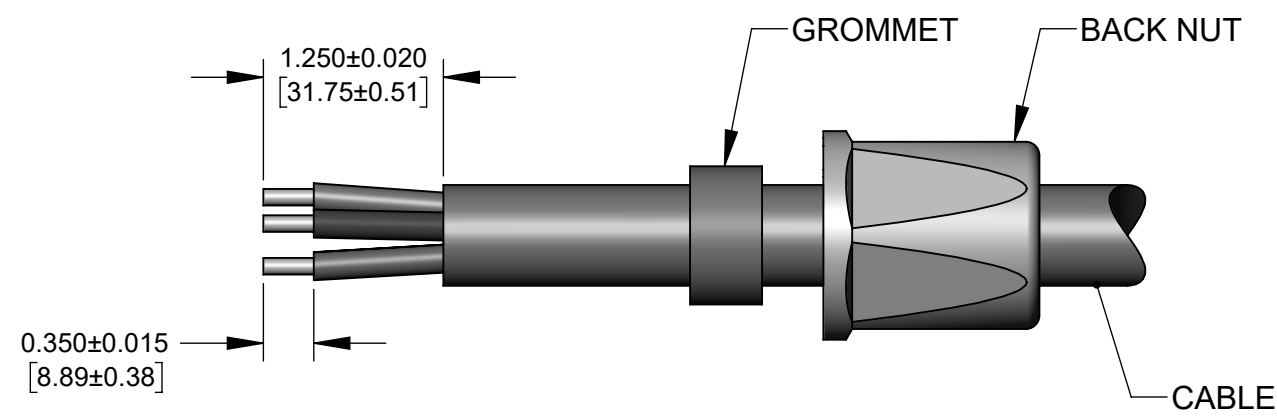
NOTES:

- 1. ALL DIMENSIONS FOR REFERENCE ONLY.
2. CONNECTORS PROVIDED UNASSEMBLED, SHOWN ASSEMBLED.
3. WARNING: DO NOT DISCONNECT THESE CONNECTORS UNDER LOAD.
4. THESE PRODUCTS ARE RoHS COMPLIANT.

CUSTOMER DRAWING

Table containing drawing metadata: UNLESS OTHERWISE SPECIFIED, FINISH, SCALE, DATE DRAWN, BY, CHKD, APVD, NAME, PART No., and REVISIONS.

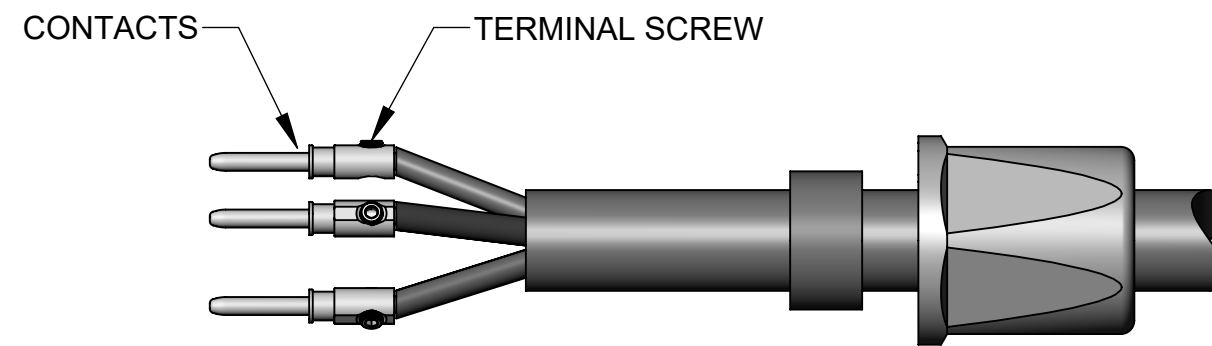
STEP 1



FEED THE FREE END OF CABLE THROUGH THE BACK NUT AND GROMMET IN THE ORDER SHOWN.
STRIP THE CABLE JACKET AND THE CONDUCTORS AS SHOWN.

STEP 2

5-POSITION PINS SHOWN



INSERT EACH STRIPPED CONDUCTOR INTO BARREL OF EACH CONTACT AND TIGHTEN TERMINAL SCREW USING A HEX DRIVE SIZE 2.
NOTE: THE PRE-ASSEMBLED TERMINAL SCREW ONTO CONTACT MAY HAVE TO BE BACKED OFF A LITTLE IN ORDER TO FIT THE 10 AWG WIRE IN THE BARREL WELL WITH EASE.

STEP 3

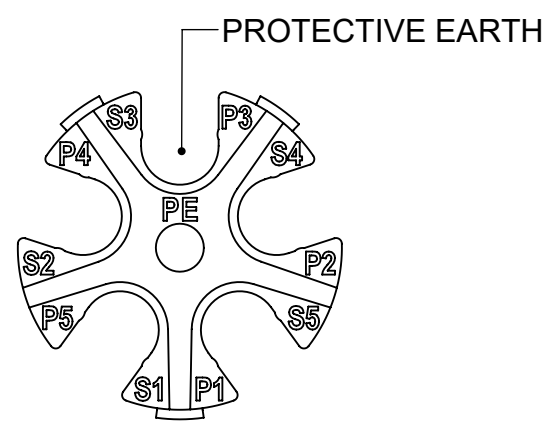
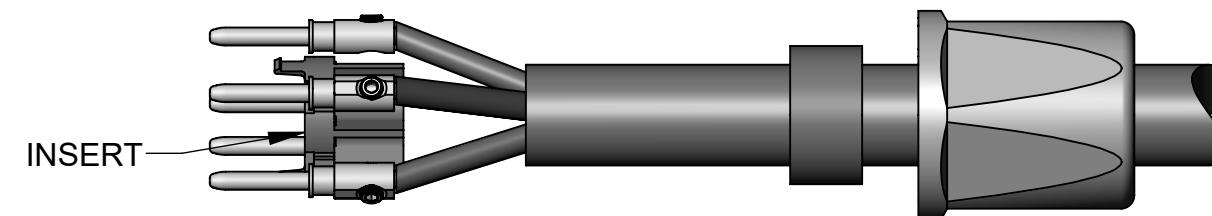


FIG A: INSERT (CONTACT CARRIER) REAR VIEW
S1-S5: SOCKET CONTACT POSITIONS, COUNTED CLOCKWISE
P1-P5: PIN CONTACT POSITIONS, COUNTED COUNTERCLOCKWISE



SPREAD THE WIRED CONTACTS APART RADIALLY AND POSITION INSERT BETWEEN CONTACTS PER WIRING DIAGRAM SHOWN IN FIG A.
ALIGN AND SNAP EACH CONTACT IN THE APPROPRIATE INSERT POCKET BY PUSHING FROM THE SIDE.

STEP 4

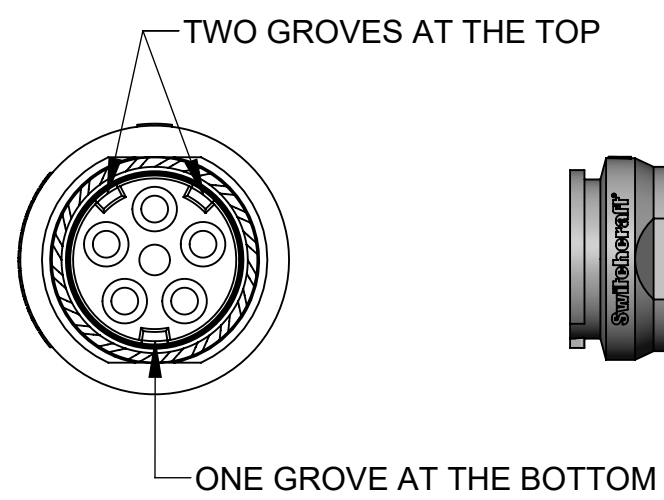
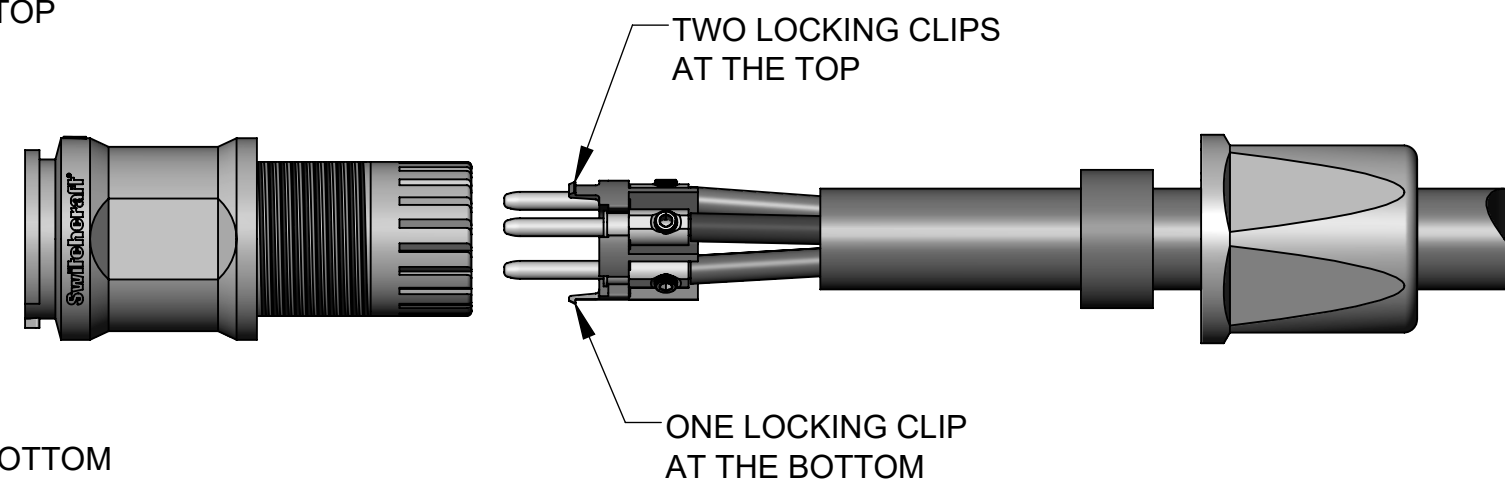
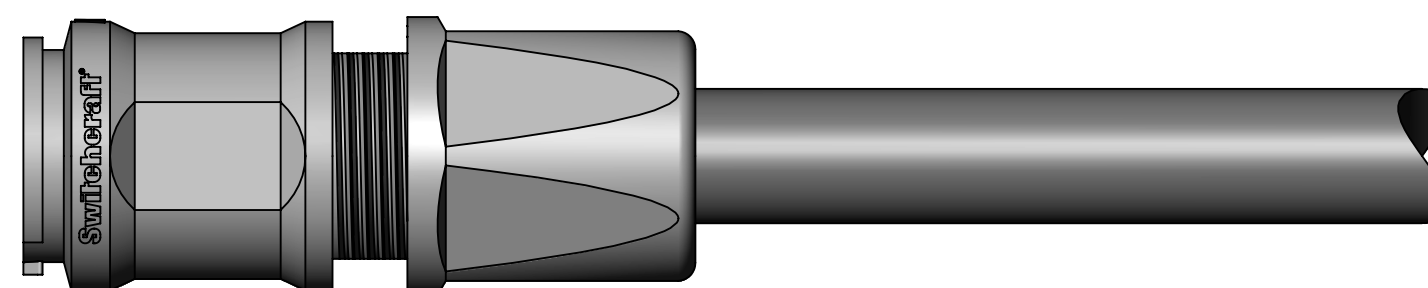


FIG B: SHELL ASSEMBLY REAR VIEW



ALIGN LOCKING CLIPS OF INSERT ASSEMBLY INTO GROOVES ON THE REAR OF THE SHELL ASSEMBLY (SEE FIG B) AND PUSH FORWARD UNTIL IT LOCKS IN PLACE.

STEP 5



FINISHED ASSEMBLY

SLIDE GROMMET INTO THE REAR OF SHELL. TIGHTEN BACK NUT TO SECURE CABLE. A 33 mm WRENCH CAN BE USED, IF NECESSARY.

CUSTOMER DRAWING

SCALE 1:1	Switchcraft®	
DATE DRAWN 04/04/23		
DRAWN BY PNK	PART No. EP7L SERIES	REV A

Mouser Electronics

Authorized Distributor

Click to View Pricing, Inventory, Delivery & Lifecycle Information:

[Switchcraft:](#)

[EP7L3F10B](#) [EP7L3F10A](#) [EP7L4F10B](#) [EP7L5F10A](#) [EP7L4M10C](#) [EP7L5F10C](#) [EP7L3M10B](#) [EP7L3M10A](#)
[EP7L3M10C](#) [EP7L3F10C](#) [EP7L4F10C](#) [EP7L5M10A](#) [EP7L4M10A](#) [EP7L5M10B](#) [EP7L4F10A](#) [EP7L4M10B](#)
[EP7L5F10B](#) [EP7L5M10C](#)