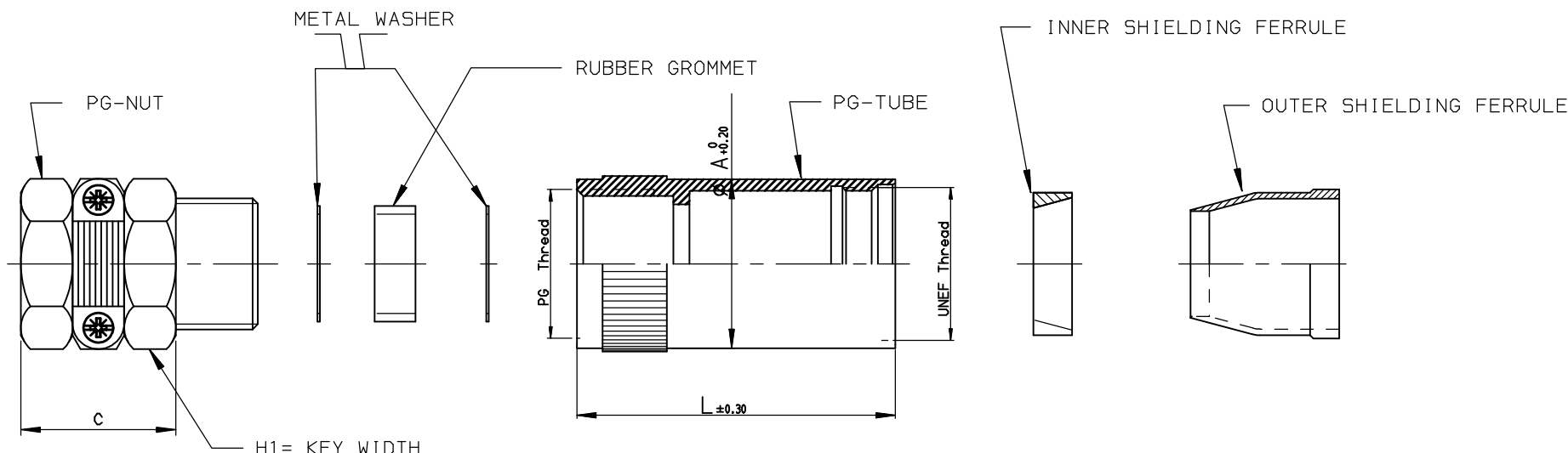


Min/MAX. CABLE DIA.
 ϕB



MATERIAL

- PG-TUBE : ALUMINIUM ALLOY, NICKEL PLATED.
- SHIELDING FERRULES : ALUMINIUM ALLOY, TIN PLATED.
- WASHER : ZINC-ELECTROPLATED STEEL.
- SCREWS : STAINLESS STEEL.
- RUBBER GROMMET : NEOPRENE BLACK
- PG-NUT AND PRESSURE BAR : POLYAMIDE - UL94-V0, COULOR BLACK.

NOTES

- ALL PIECES ARE PACKED AS LOOSE PIECES IN PLASTIC BAG
- MAX BRAID THICKNESS 0.5MM BETWEEN INNER AND OUTER FERRULES
- REFER TO ASSEMBLY PROCEDURE : DRW BS,C,201686,002 AND BS,C,201686,003

PERFORMANCE CHARACTERISTICS

- DEGREE OF WATER PROTECTION : IP65
- OPERATING TEMPERATURE : -55°C to +125°C
- CORROSION SALT SPRAY : 48 HOURS
- RoHS COMPLIANT

CATALOG NUMBER
 UTOS--JCPGN

CAT. N°.	UNEF Thread	PG Thread	L	ϕA	C	ϕB	H1
UTOS10JCPGN	9/16 24-UNEF-2B	PG9	42.1	17.2	14.5	4 to 8.8	19.0
UTOS12JCPGN	11/16 24-UNEF-2B	PG11	42.1	20.8	16.0	6 to 12.0	21.0
UTOS14JCPGN	13/16 20-UNEF-2B	PG13.5	47.1	23.8	17.0	6 to 14.4	23.0
UTOS16JCPGN	15/16 20-UNEF-2B	PG16	50.1	26.9	19.0	7 to 16.2	25.0
UTOS18JCPGN	1-1/16 18-UNEF-2B	PG16	54.2	30.2	19.0	7 to 16.2	25.0
UTOS20JCPGN	1-3/16 18-UNEF-2B	PG21	55.6	33.3	23.5	10 to 21.2	32.0
UTOS22JCPGN	1-5/16 18-UNEF-2B	PG21	62.7	36.2	23.5	10 to 21.2	32.0
UTOS24JCPGN	1-7/16 18-UNEF-2B	PG29	65.0	39.7	30.0	18 to 29.5	42.0

C	18/06/12	ADD NOTE : RoHS COMPLIANT	N.--
ISS	DATE	Latest modification by :	ROUILLARD Ch MOD N°
Designed by :		ROUILLARD date: 02/05/06	Type of drawing: CUSTOMER DRAWING
Checked by :		SEE DISTRIBUTION LIST	Date : ON DISTRIBUTION LIST
TITLE : UTO and UTOW Connectors - Shielded cable clamp with metal PG tube and plastic strain relief			
SCALE	General angular Tolerances	MATERIAL: See note	N° : --
1	--	--	--
	General Linear Tolerances: --	General machining surface texture: --	Geometric tolerances see NF E 04-552
 SOURIAU Connection Technology		SOURIAU Route Nationale 23 72470 CHAMPAGNE Tel. (33)02.43.54.35.00	This document is the property of SOURIAU It must not be reproduced or communicated without permission in writing from the owners
FORMAT	SOURIAU DRG N°		SHEET
A3	UTOSXXJCPGN-C01		1/1

Mouser Electronics

Authorized Distributor

Click to View Pricing, Inventory, Delivery & Lifecycle Information:

[Souriau:](#)

[UT0S20JCPGN](#) [UT0S14JCPGN](#) [UT0S16JCPGN](#) [UT0S12JCPGN](#) [UT0S10JCPGN](#) [UT0S24JCPGN](#)
[UT0S22JCPGN](#) [UT0S18JCPGN](#)