

DS-700

USB Device Server with USB3.0 Support

Securely share USB devices over the network in your facilities



Overview

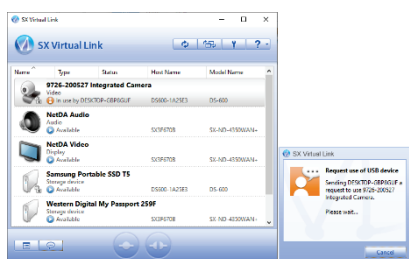
USB devices such as scanners, MFP (Multi-Function Printer), hard disks, and cameras are used at offices. DS-700 allows users to free from constrain of USB cables and place devices more freely by converting USB cables to a network. More than one users share a single USB device easily by using DS-700, so that they can optimize the number of USB devices at offices and expect to reduce installation costs.

USB Device Server

With silex technology's USB virtual technology (USB Virtual Link Technology®), USB devices connected to a network can be used as if they are connected to a PC with a USB cable. The driver and the application software of the USB devices can be used without modification.

SX Virtual Link

SX Virtual Link is application software designed for USB Virtual Link Technology®. SX Virtual Link allows users to manage USB devices connected to DS-700.

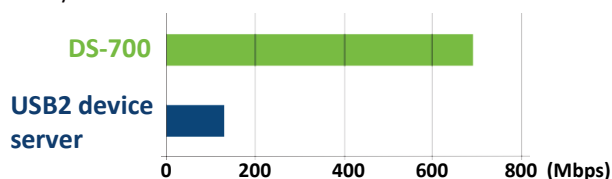


- Users can remotely connect/disconnect a USB device.
- Users can send a message requesting to disconnect when another user is already using the USB device.

Features

1 High Data Bandwidth

DS-700 supports USB3.0 SuperSpeed to transmit data faster than the previous model. In combination with USB3.0, DS-700 can transmit even a large amount of data of devices such as document scanners to a network for a short time, so that it can be expected to improve business efficiency.



* Comparison of data transfer rate of the device servers (silex's comparison)

2 Various USB Devices Support

• Isochronous Transfer Mode

USB devices such as web cameras and USB speakers requiring continuous and real-time data transfer can also be used in a network environment.

* Some USB devices have complex transfer modes, so it is recommended to verify the performance before large deployment.

• Standard TCP/IP Printing (LPR/RAW)

When a printer is connected to DS-700, users can use DS-700 as a print server. The print server function is based on the commonly used network printing protocol. DS-700 supports "Raw Mode Print" and "LPR Print."

3 Easy Configuration and Installation

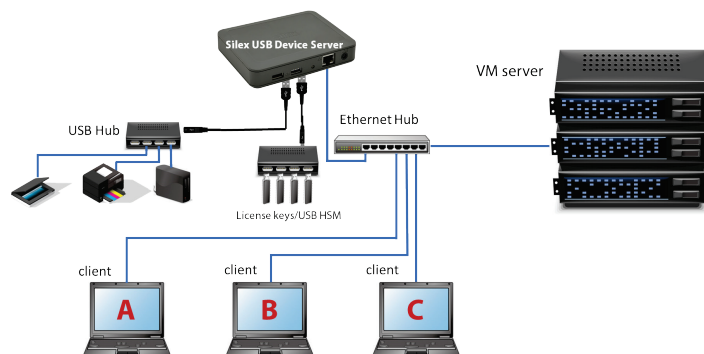
"Device Server Setup" utility makes the DS-700 setup easy. The DS-700 configuration after the installation is also made easy by an integrated web configuration page or AMC Manager®.

4 ECO Mode

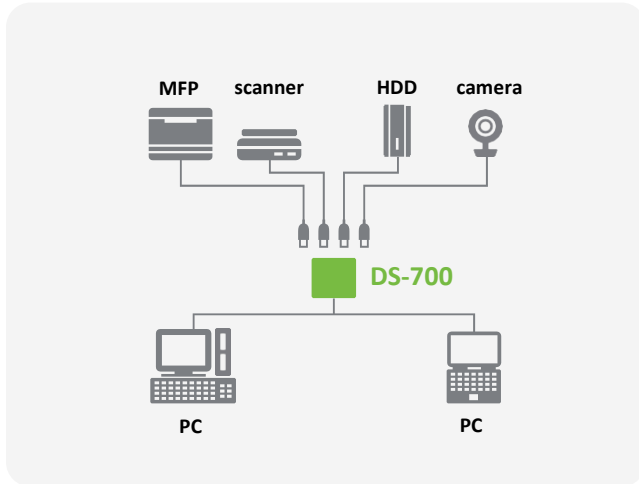
When the DS-700 is not used for a certain period of time, the DS-700 shuts off the USB bus power to save the power. Once the DS-700 detects an activity from the network, the USB bus power is automatically powered on.

USB over Network for Windows Virtual Environment

When you want flexible USB device placement in a virtual environment, you will want to use USB Device Servers. Silex's USB Virtual Link Technology® allows any windows clients to connect to any devices. It will enable limitless flexibility when you want to place your USB devices on the network within a facility.

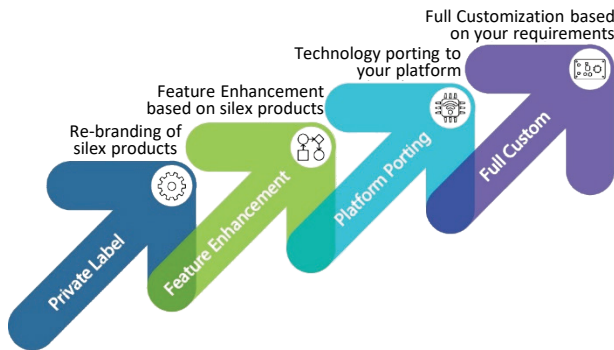


Use case examples



Customization for OEM customers

At Silex, we offer our customers the opportunity to customize products. As an OEM, this gives you the ability to specify what the product looks like and you choose what goes into the product.



sESS (silex Embedded Software Suite)

silex has Software Development Kit (SDK) for client devices to add USB device server functions, SX Virtual Link, to customers' applications. With the SDK, the customers can use DS-700 functions on Windows applications, smartphones and tablets run on iOS and Android.

SX UVL Client SDK for Win32

SX UVL Client SDK for iOS

SX UVL Client SDK for Android

* Please contact our sales representatives for more details.

DS-700 Specifications

Product Name	DS-700
Wired LAN Interface	RJ-45: x1
Device Interface	10BASE-T/100BASE-TX/1000BASE-T (Auto) USB: x2 (USB3 SuperSpeed Type-Ax1*, USB2 Hi-Speed Type-A x1)
Switch	Push Switch x 1
LED	RJ-45: x2
Operating Environment	Temperature: 0 to +40°C Humidity: 20 ~ 80% RH
Storage Condition	Temperature: -10 to 50°C Humidity: 20 ~ 90% RH
Power Supply	DC 12V DC Jack (EIAJ4)
Max Power Consumption	4.2W (12VDC, 0.35A) * USB bus power excluded
Dimension	110mm X 109mm X 27mm (the main body size excluding protrusions)
Weight	130g (the main body only)
Included Items	DS-700, AC adapter, setup guide, GPL inquiry sheet
Regulatory Compliance	FCC Class B, ICES Class B, CE Class B, VCCI Class B, RoHS
Warranty	5 years
Security	USB connection password protection IP address filter Port filter
Supported Software	SX Virtual Link Device, Device Server Setup AMC Manager®
Supported OS	Windows 10 (32/64-bit), Windows 8/8.1 (32/64-bit), Windows 7 (32/64-bit), Windows Server 2019, Windows Server 2016, Windows Server 2012R2, Windows Server 2012, Windows Server 2008R2

* The bus power supply current is 900mA for the USB3.0 port and 500mA for the USB2.0 port. USB hubs and devices with a built-in USB hub inside cannot be used for the USB3.0 port. USB image conversion devices cannot be used for the USB3.0 port.

Wireless Option of DS-700

DS-700AC Wireless Device Server USB3.0 Enterprise Security

- IEEE 802.11a/b/g/n/ac
- USB3.0 (Type-A) x 1 port, USB 2.0 (Type-A) x 1 port
- Isochronous transfer
- WPA2/WPA3-Enterprise* with 802.1x security

* WPA3-Enterprise supports only 128-bit security



Silex technology is a registered trademark of silex technology, Inc. other product or brand names may be registered trademarks or trademarks of their respective owners. Technical information and specifications are subject to change without notice. © 2021 silex technology, Inc. All rights reserved.

silex global sales & support locations

US Office
silex technology america, Inc.
US toll free 657-218-5199
www.silextechnology.com
sales@silexamerica.com

Europe Office
silex technology europe, GmbH
+49-2154-88967-0
Germany toll free 0800-7453938
www.silextechnology.com
sales@silexeurope.com

India Office
technology india, Pvt. Ltd.
+91-44-43033234
www.silex-india.com
support@silex-india.com

Corporate Headquarters silex
silex technology, Inc.
+81-774-98-3781
www.silex.jp
support@silex.jp



Mouser Electronics

Authorized Distributor

Click to View Pricing, Inventory, Delivery & Lifecycle Information:

[Silex Technology:](#)

[DS-700\(US\)](#) [DS-700AC\(US\)](#)