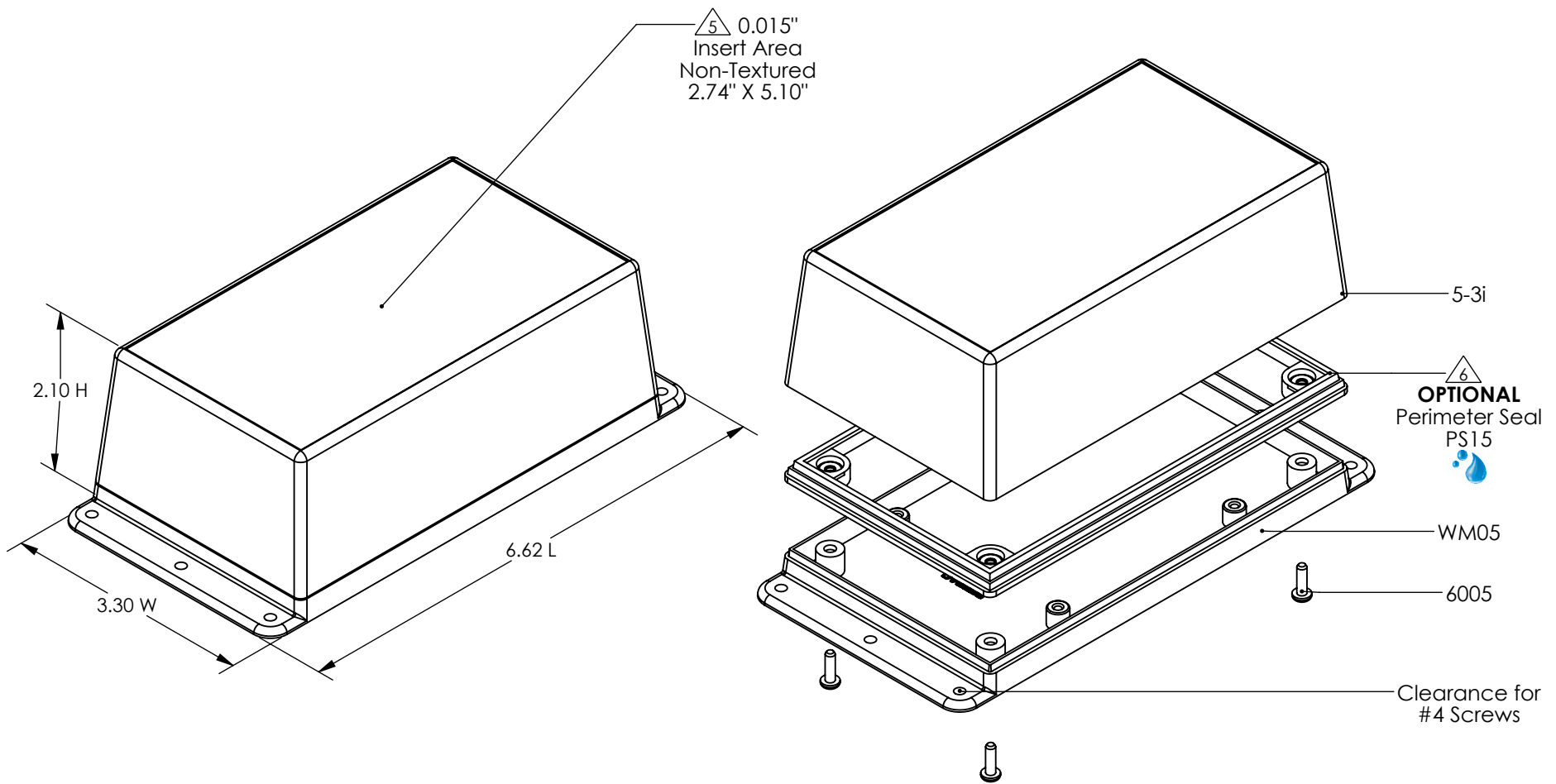


SERPAC WM053i

ELECTRONIC ENCLOSURES



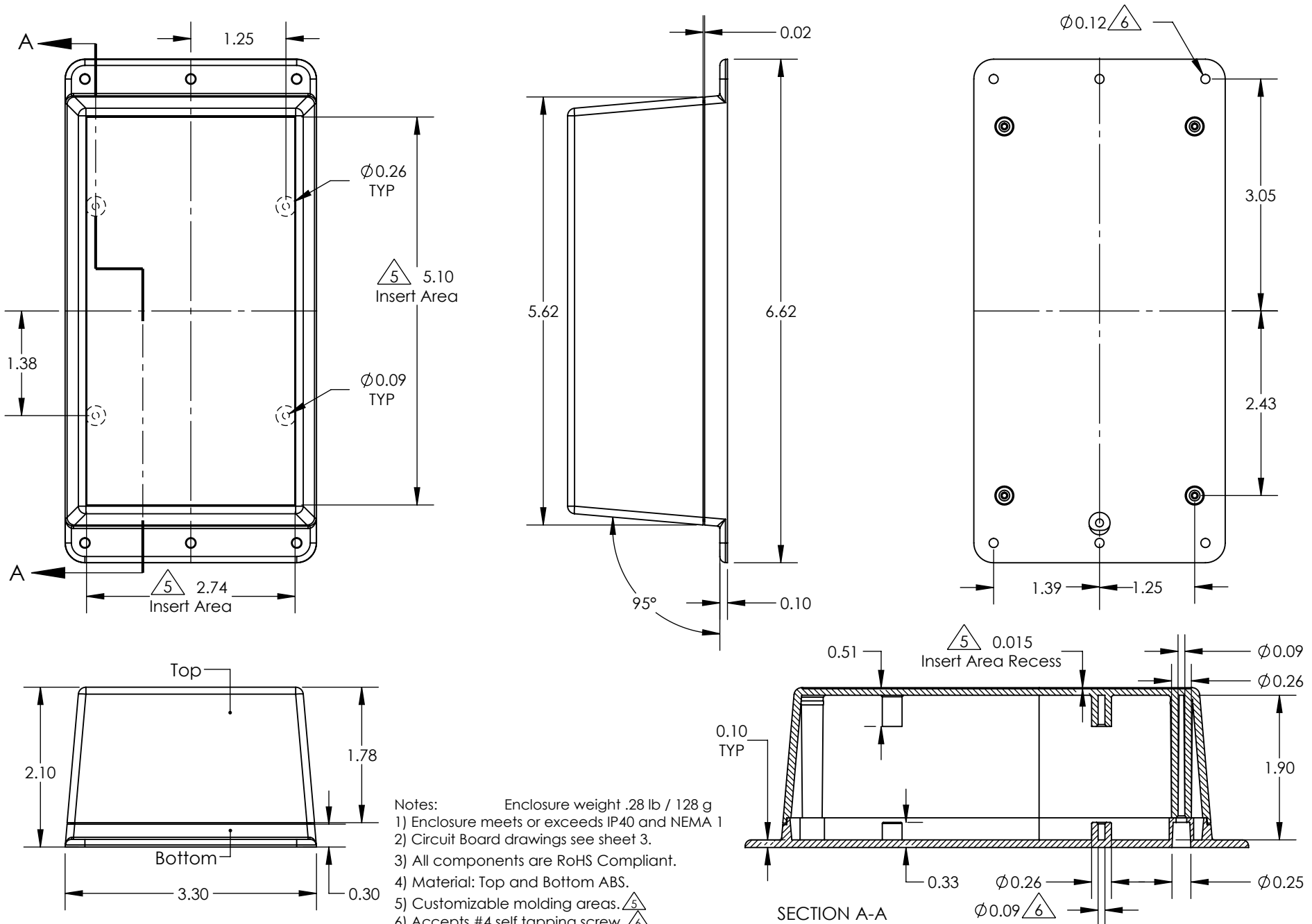
PART NO.	DESCRIPTION (Included)	ACCESSORIES (Optional)	
5-3i	Top	PART NO.	DESCRIPTION
WM05	Wall Mounted Bottom	60	Standoff Hole
6005	#4X3/8" Self-Tapping Screw (4)	61	Standoff Post
		PS15	Waterproof Perimeter Seal
		1040	2AA Battery Holder

Notes: Enclosure weight .28 lb / 128 g

- 1) Enclosure meets or exceeds IP40 and NEMA 1
- 2) Circuit Board drawings see sheet 3.
- 3) All components are RoHS Compliant.
- 4) Material: Top and Bottom ABS.
- 5) Customizable molding areas.
- 6) When used with PS15 the enclosure meets or exceeds IP 67 and NEMA 4X, 12 and 13 MIL-STD-810G 506.5 (.02 lb / 11g)

SERPAC WM053i

ELECTRONIC ENCLOSURES

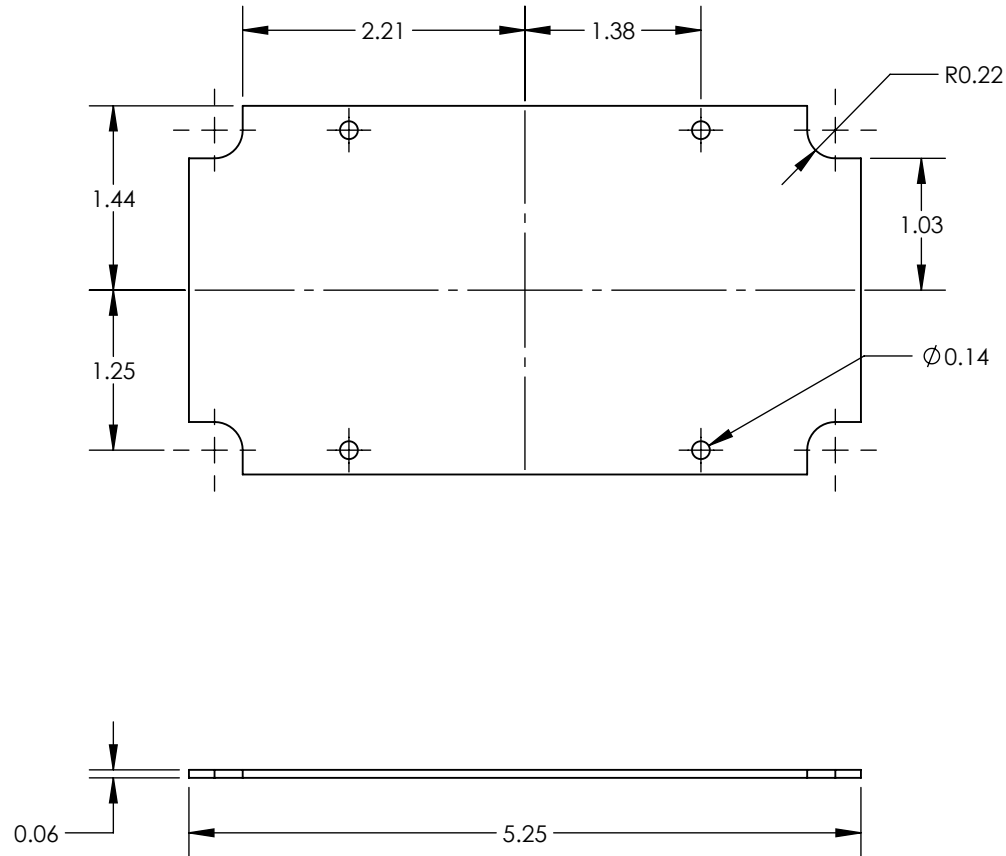


- Notes:
- Enclosure weight .28 lb / 128 g
 - 1) Enclosure meets or exceeds IP40 and NEMA 1
 - 2) Circuit Board drawings see sheet 3.
 - 3) All components are RoHS Compliant.
 - 4) Material: Top and Bottom ABS.
 - 5) Customizable molding areas. $\triangle 5$
 - 6) Accepts #4 self tapping screw. $\triangle 6$
 - 7) When used with PS15 the enclosure meets or exceeds IP 67 and NEMA 4X, 12 and 13 MIL-STD-810G 506.5 (.02 lb / 11g)

SERPAC WM053i CIRCUIT BOARD

ELECTRONIC ENCLOSURES

Top & Bottom Option



Mouser Electronics

Authorized Distributor

Click to View Pricing, Inventory, Delivery & Lifecycle Information:

[SERPAC:](#)

[WM053IAL](#) [WM053IBK](#) [WM053IGY](#) [WM053I,AL](#) [WM053I,BK](#) [WM053I,GY](#)