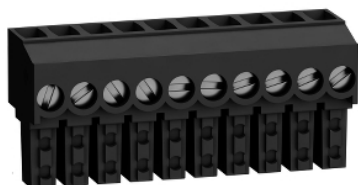


# TWDFTB2T10

screw terminal block - 10 contacts - for I/O module - Twido

Product availability: Non-Stock - Not normally stocked in distribution facility



## Main

Range of product	Twido
Accessory / separate part category	Connection accessories
Accessory / separate part type	Terminal block
Accessory / separate part designation	Screw terminal block
Accessory / separate part destination	I/O module
Number of contacts	10

## Complementary

Product compatibility	TM2DDO8TT TM2DRA16RT TM2DDI8DT TM2DDI16DT TM2DDO8UT
-----------------------	---

## Ordering and shipping details

Category	22531 - PLCS, TWIDO, TWD
Discount Schedule	PC12
GTIN	00785901705635
Nbr. of units in pkg.	1
Package weight(Lbs)	5.999999999999998E-2
Returnability	N
Country of origin	JP

## Contractual warranty

Warranty period	18 months
-----------------	-----------

The information provided in this documentation contains general descriptions and/or technical characteristics of the performance of the products contained herein. This documentation is not intended as a substitute for and is not to be used for determining suitability or reliability of these products for specific user applications. It is the duty of any such user or integrator to perform the appropriate and complete risk analysis, evaluation and testing of the products with respect to the relevant specific application or use thereof. Neither Schneider Electric Industries SAS nor any of its affiliates or subsidiaries shall be responsible or liable for misuse of the information contained herein.

# Mouser Electronics

Authorized Distributor

Click to View Pricing, Inventory, Delivery & Lifecycle Information:

[Schneider Electric:](#)

[TWDFTB2T10](#)