

Product availability: Stock - Normally stocked in distribution facility



Main

Range of product	OsiSense XU
Device short name	XUPH
Product or component type	Communication module

Complementary

Communication port protocol	Modbus TCP/IP
Product compatibility	Picking sensor
Connector type	RJ45
Number of connectors	8 sensor(s) 2 Modbus TCP/IP
[Us] rated supply voltage	24 V DC
Electrical connection	Screw terminal block power supply
Local signalling	Ethernet network activity Ethernet network link
Width	1.77 in (45 mm)
Height	7.28 in (185 mm)
Depth	2.76 in (70 mm)
Product weight	0.77 lb(US) (0.35 kg)

Environment

Pollution degree	2
IP degree of protection	IP20 with protective cover

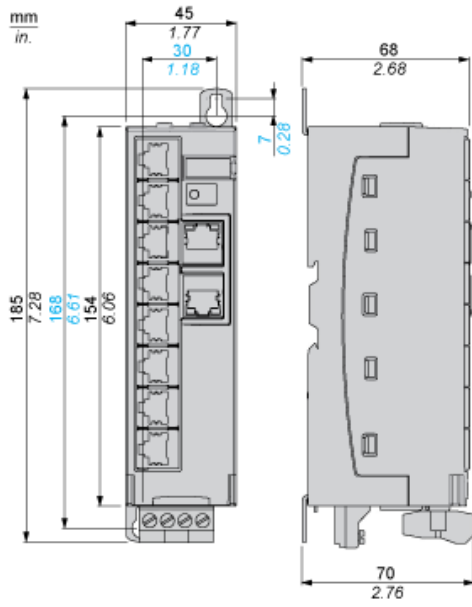
Ordering and shipping details

Category	22482 - ROLLER CONVEYOR SENSORS
Discount Schedule	DS2
GTIN	003389119621489
Nbr. of units in pkg.	1
Package weight(Lbs)	2
Returnability	Y
Country of origin	FR

Offer Sustainability

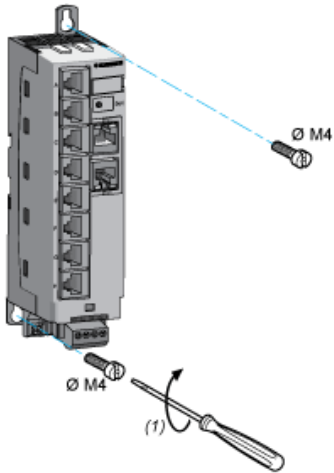
California proposition 65	WARNING: This product can expose you to chemicals including:
----- Substance 1	Diisononyl phthalate (DINP), which is known to the State of California to cause cancer, and
----- Substance 2	Di-isodecyl phthalate (DIDP), which is known to the State of California to cause birth defects or other reproductive harm.
----- More information	For more information go to www.p65warnings.ca.gov

Dimensions



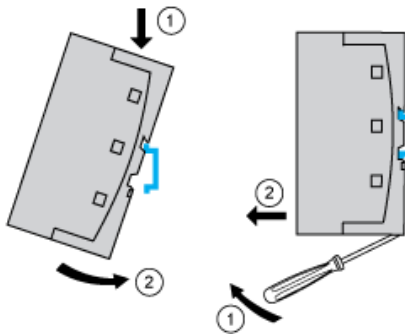
Mounting

Mounting on a Flat Panel



(1) Maximum tightening torque: 1,7 Nm / 15 lb-in.

Mounting on a Rail



Mouser Electronics

Authorized Distributor

Click to View Pricing, Inventory, Delivery & Lifecycle Information:

[Schneider Electric:](#)

[XUPH001](#)