

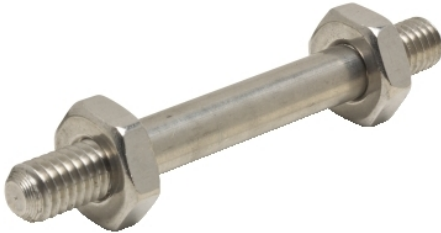
Product data sheet

Characteristics

9049ER2

float switch accessory 9049 - 2-1/2 in. stainless steel rod

Product availability: Non-Stock - Not normally stocked in distribution facility



Main

Range of product	9049
Product or component type	Rod

Complementary

Product compatibility	9037E 9038D
Rod length	2.5 in
Product weight	: 0.03 lb(US)

Ordering and shipping details

Category	21617 - 9049 ACCESSORIES (DISCOUNT CP7G)
Discount Schedule	CP7G
GTIN	00785901485520
Nbr. of units in pkg.	1
Package weight(Lbs)	2.9999999999999999E-2
Returnability	N
Country of origin	MX

Offer Sustainability

RoHS (date code: YYWW)	Will not be compliant
REACH	Reference not containing SVHC above the threshold
Product environmental profile	Available
Product end of life instructions	Available
California proposition 65	WARNING: This product can expose you to chemicals including:
----- Substance 1	Diisononyl phthalate (DINP), which is known to the State of California to cause cancer, and
----- Substance 2	Di-isodecyl phthalate (DIDP), which is known to the State of California to cause birth defects or other reproductive harm.
----- More information	For more information go to www.p65warnings.ca.gov

Contractual warranty

Warranty period	18 months
-----------------	-----------

The information provided in this documentation contains general descriptions and/or technical characteristics of the performance of the products contained herein. This documentation is not intended as a substitute for and is not to be used for determining suitability or reliability of these products for specific user applications. It is the duty of any such user or integrator to perform the appropriate and complete risk analysis, evaluation and testing of the products with respect to the relevant specific application or use thereof. Neither Schneider Electric Industries SAS nor any of its affiliates or subsidiaries shall be responsible or liable for misuse of the information contained herein.

Mouser Electronics

Authorized Distributor

Click to View Pricing, Inventory, Delivery & Lifecycle Information:

[Schneider Electric:](#)

[9049ER2](#)