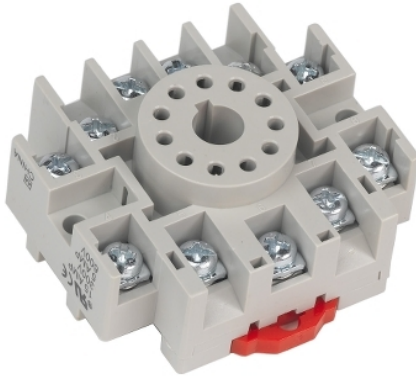




Product availability: Stock - Normally stocked in distribution facility



Main

Product range	8501N
Product type	Relay Socket
Pin shape	Tubular
Number of pins	11
[In] rated current	15 A at 300 V AC 5 A at 600 V AC

Complementary

Electrical connection	Single tiered screw clamp terminals
Mounting type	DIN rail Panel
Package quantity	1

Environment

Certifications	CSA RoHS UL recognized CE
Height	54.8 mm
Width	2.32 in (59 mm)
Depth	24.6 mm

Ordering and shipping details

Category	21142 - 8501 N
Discount Schedule	CP2
GTIN	00785901583677
Nbr. of units in pkg.	1
Package weight(Lbs)	0.1400000000000001
Returnability	Y
Country of origin	CN

Offer Sustainability

Sustainable offer status	Green Premium product
RoHS (date code: YYWW)	Compliant - since 0627 - Schneider Electric declaration of conformity Schneider Electric declaration of conformity
REACH	Reference not containing SVHC above the threshold
Product environmental profile	Available
Product end of life instructions	Need no specific recycling operations
California proposition 65	WARNING: This product can expose you to chemicals including:
----- Substance 1	Nickel compounds, which is known to the State of California to cause cancer, and

----- Substance 2	Di-isodecyl phthalate (DIDP), which is known to the State of California to cause birth defects or other reproductive harm.
----- More information	For more information go to www.p65warnings.ca.gov

Contractual warranty

Warranty period	18 months
-----------------	-----------

Mouser Electronics

Authorized Distributor

Click to View Pricing, Inventory, Delivery & Lifecycle Information:

[Schneider Electric:](#)

[8501NR61](#)