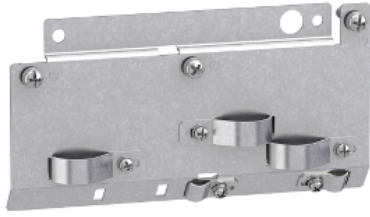


Product data sheet

Specifications



Altivar Machine ATV320, EMC conformity kits, for variable speed drive, size 5

VW3A9533

Main

Range of product	Altivar Machine ATV320
Accessory / separate part type	EMC conformity kits
Accessory / separate part category	Mounting and fixing accessory
Product compatibility	ATV320...C variable speed drive 11 kW motor, 200...240 V three phase ATV320...C variable speed drive 15 kW motor, 200...240 V three phase ATV320...C variable speed drive 11 kW motor, 525...600 V three phase ATV320...C variable speed drive 15 kW motor, 525...600 V three phase

Complementary

Kit composition	fixing collars EMC plate screws
Net weight	0.26 kg

Packing Units

Unit Type of Package 1	PCE
Number of Units in Package 1	1
Package 1 Weight	388 g
Package 1 Height	7 cm
Package 1 width	16.7 cm
Package 1 Length	23 cm
Unit Type of Package 2	S03
Number of Units in Package 2	8
Package 2 Weight	11.913 kg
Package 2 Height	30 cm
Package 2 width	30 cm
Package 2 Length	40 cm

Offer Sustainability

REACH Regulation	REACH Declaration
REACH free of SVHC	Yes
EU RoHS Directive	Pro-active compliance (Product out of EU RoHS legal scope) EU RoHS Declaration

Mercury free	Yes
RoHS exemption information	Yes
China RoHS Regulation	China RoHS declaration
California proposition 65	WARNING: This product can expose you to chemicals including: Lead and lead compounds, which is known to the State of California to cause cancer and birth defects or other reproductive harm. For more information go to www.P65Warnings.ca.gov

Mouser Electronics

Authorized Distributor

Click to View Pricing, Inventory, Delivery & Lifecycle Information:

[Schneider Electric:](#)

[VW3A9533](#)