

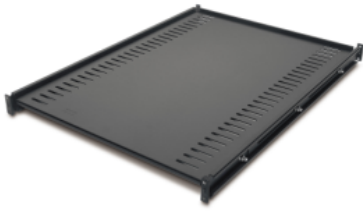
Product data sheet

Specifications



Fixed Shelf 250lbs/114kg Black

AR8122BLK



Overview

Presentation	Fixed shelf to enable the mounting of tower units, monitors, and other equipment into the rack environment.
Lead time	Usually in Stock

Main

Number of rack unit	1U
Number of cables	1

General

Provided equipment	Installation guide Mounting Hardware
---------------------------	---

Physical

Color	Black
Depth	25.98 in (66 cm)
Height	1.73 in (4.4 cm)
Maximum Mounting Depth	32.50 in (82.55 cm)
Minimum mounting depth	26.50 in (67.31 cm)
Net Weight	18.03 lb(US) (8.18 kg)
Permanent permissible load	250 lb(US) (113.40 kg) static
Width	18.50 in (47 cm)

Conformance

Standards	EIA-310D
------------------	----------

Ordering and shipping details

GTIN	00731304107842
Package weight(Lbs)	23.06 lb(US) (10.46 kg)

Packing Units

Package 1 Height	30.51 in (77.5 cm)
Package 1 width	22.68 in (57.6 cm)

Package 1 Length	3.50 in (8.9 cm)
------------------	------------------

Offer Sustainability

Sustainable offer status	Green Premium product
--------------------------	-----------------------

REACH Regulation	REACH Declaration
------------------	-----------------------------------

REACH free of SVHC	Yes
--------------------	-----

EU RoHS Directive	Pro-active compliance (Product out of EU RoHS legal scope) EU RoHS Declaration
-------------------	---

Toxic heavy metal free	Yes
------------------------	-----

Mercury free	Yes
--------------	-----

RoHS exemption information	Yes
----------------------------	---------------------

Take-back	Take-back program available
-----------	-----------------------------

Contractual warranty

Warranty	2 years repair or replace
----------	---------------------------

Mouser Electronics

Authorized Distributor

Click to View Pricing, Inventory, Delivery & Lifecycle Information:

[Schneider Electric:](#)

[AR8122BLK](#)