

Product availability: Non-Stock - Not normally stocked in distribution facility



### Main

Range of product	Modicon M171
Product or component type	Communication module
Communication port protocol	Profibus

### Complementary

Integrated connection type	Profibus DP DB9 - shielded RS232 cable
Supply	Via base board EVD/EVC
Product compatibility	Logic controller M171 performance
Product weight	0.17 lb(US) (0.077 kg)

### Environment

Product certifications	CE CSA CURus EAC
Marking	CE
IP degree of protection	IP20
Ambient air temperature for operation	14...131 °F (-10...55 °C)
Ambient air temperature for storage	-4...185 °F (-20...85 °C)
Relative humidity	10...90 % without condensation

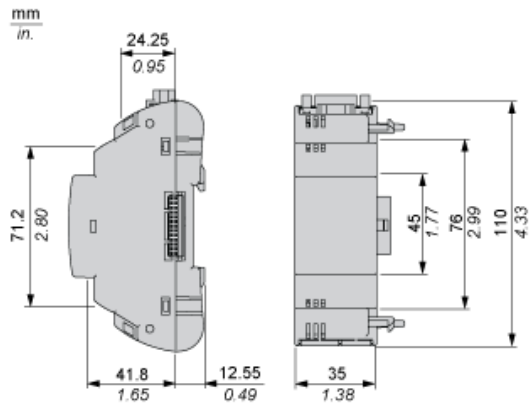
### Ordering and shipping details

Category	22537 - M171 / M172 HVAC CONTROLLERS
Discount Schedule	PC12
GTIN	003606480752544
Nbr. of units in pkg.	1
Package weight(Lbs)	0.6400000000000001
Returnability	N
Country of origin	IT

### Offer Sustainability

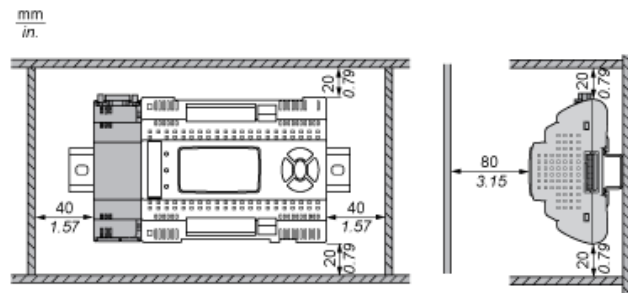
RoHS (date code: YYWW)	Compliant - since 1429 - Schneider Electric declaration of conformity <a href="#">Schneider Electric declaration of conformity</a>
REACH	Reference not containing SVHC above the threshold
California proposition 65	WARNING: This product can expose you to chemicals including:
----- Substance 1	Lead and lead compounds which is known to the State of California to cause cancer and birth defects or other reproductive harm.
----- More information	For more information go to <a href="http://www.p65warnings.ca.gov">www.p65warnings.ca.gov</a>

Dimensions

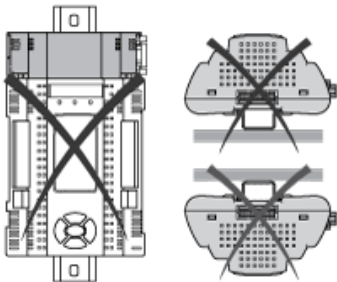


Mounting and Clearance

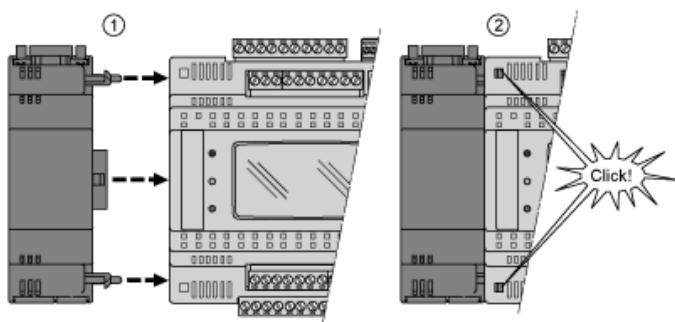
Clearance



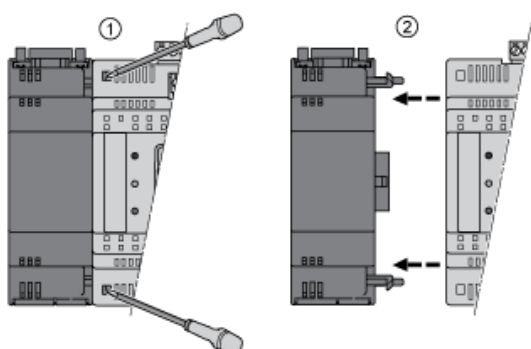
Misplacement



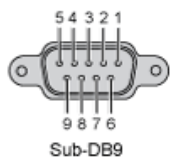
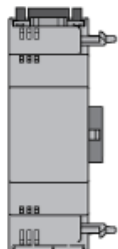
Mounting on Controller



Dismounting



## Profibus port (Profibus DP)



N°	Profibus
1	Shield
2	Output ground 24 V
3	RXD-TXD +
4	Repeater Control Signal TRS
5	Ground 0 V
6	5 V
7	24 V
8	RXD-TXD-
9	Control Signal direction

\*Shield: To be connected externally to the protective earth

# Mouser Electronics

Authorized Distributor

Click to View Pricing, Inventory, Delivery & Lifecycle Information:

[Schneider Electric:](#)

[TM171APBUS](#)