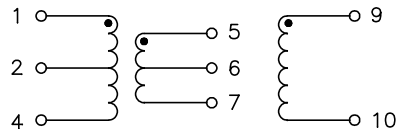


PE-6196NL

NOTICE: THE INFORMATION AND DESIGN CONTAINED HEREIN IS THE PROPERTY OF PULSE WHO RESERVES ALL RIGHTS THERETO.

TEST NOTES:
UNLESS OTHERWISE SPECIFIED, TESTING IS PERFORMED AT 25°C ±5°C.

1. TURNS RATIO: 12:12:3:3:480 ±5%
2. POLARITY: PER SCHEMATIC
3. INSULATION RESISTANCE:
(1-4) TO (9-10) = 10 KMEGOHMS MINIMUM AT 500 Vdc
(5-7) TO (9-10) = 10 KMEGOHMS MINIMUM AT 500 Vdc
(1-4) TO (5-7) = 10 KMEGOHMS MINIMUM AT 300 Vdc
4. HIPOT:
2500 VRMS (1-4) TO (9-10) AND (5-7) TO (9-10)
5. FUNCTIONAL TEST:
 - 5.1 SET UP EQUIPMENT PER TEST SET-UP OF FIGURE 4, SHEET 3
 - 5.2 PLUG STANDARD UNIT INTO FIXTURE C-JM-17061
 - 5.3 ADJUST POWER SUPPLY UP TO 28 Vdc
 - 5.4 DECREASE THE RESISTANCE OF THE DECADE BOX STARTING FROM THE LARGEST DECADE UNTIL FULL LOAD CURRENT OF 20 mA IS REACHED. APPROXIMATE $R_L = 50 \text{ KOHMS} - 10 \text{ WATTS}$.
 - 5.5 THE OUTPUT VOLTAGE SHALL BE: 1065 V NOM.
 - 5.6 ALL SUBSEQUENT UNITS TESTED SHALL HAVE AN OUTPUT VOLTAGE BETWEEN 1030 V MINIMUM AND 1100 V MAXIMUM
- *6. INDUCED VOLTAGE TEST: APPLY 28 VRMS TO LEADS 1, 2 AT A FREQUENCY ABOVE THE FREQUENCY OF SELF OSCILLATION (SUGGEST 50 KHz) FOR 15 SECONDS MONITOR INPUT CURRENT AND OBSERVE THAT ABRUPT CHANGES DO NOT OCCUR. RADICAL OR ABRUPT CHANGES INDICATE ARCING OR BREAKDOWN. CURRENT MONITORING SHOULD BE ACCOMPLISHED BY A SERIES RESISTOR OR OTHER SUITABLE MEANS. IF A RESISTOR IS USED A HIGH IMPEDANCE SCOPE OR VTVM SHOULD BE USED AS A MONITORING DEVICE.
(* REF ONLY DULICATES CONDITIONS OF TEST NOTE 5)
7. IMAG =70 mA MINIMUM - 180 mA MAXIMUM.
 $E = 15 \text{ V PK}$, $TW = 20 \text{ uS}$, $P_{rr} = 1 \text{ KHz}$
8. LL: (1-4) TO (9-10) SHORT
3.2 uH MAXIMUM, 100 KHz AT .02 VRMS ON HP-4277A
9. CWW: AT 100 KHz, .02 VRMS
(1-4) TO (5-7) = 35 pF MAXIMUM
(1-4) TO (9-10) = 35 pF MAXIMUM
10. DCR:
(1-4) = .12 OHMS MAXIMUM
(5-7) = .08 OHMS MAXIMUM
(9-10) = 85.0 OHMS MAXIMUM



SCHEMATIC

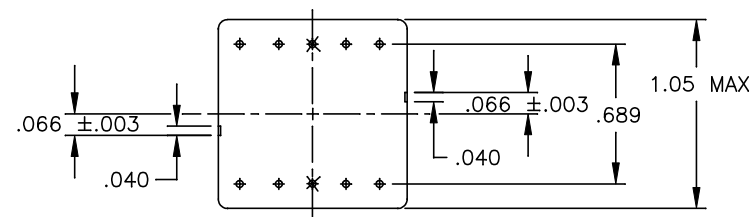
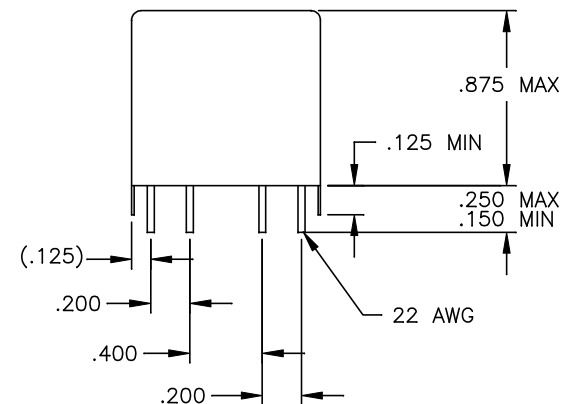
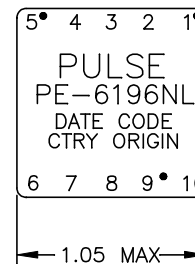


FIGURE 5 - FINAL OUTLINE

UNLESS OTHERWISE SPECIFIED, ALL DIMENSIONS ARE IN INCHES TOLERANCES ARE:
 DECIMALS .XX ±.01 ± 1°
 ANGLES .XXX ±.005
 DO NOT SCALE DRAWING

SIZE	CAGE CODE	DWG. NO.	REV
B01961	PE-6196NL		14
SCALE	NONE	CADD FILE	SHEET 4 OF 4
PE-6196NL-4			

Mouser Electronics

Authorized Distributor

Click to View Pricing, Inventory, Delivery & Lifecycle Information:

Pulse:

[PE-6196](#) [PE-6196NL](#)