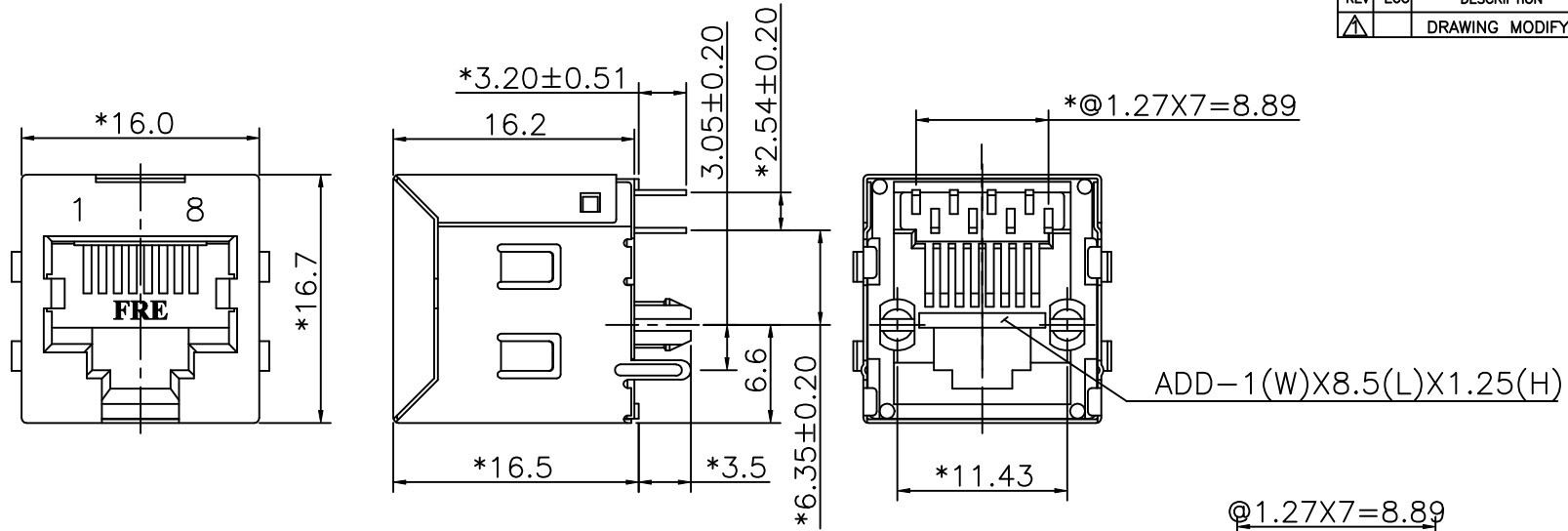


REVISION RECORD				
REV	ECO	DESCRIPTION	DRFT	CHKD
▲		DRAWING MODIFY	JAMIN 12/13/05	



**NOTES:**

**ELECTRICAL:**

1. VOLTAGE RATING : 125 VAC RMS.
2. CURRENT RATING : 1.5 AMP.
3. CONTACT RESISTANCE : 30 MILLIOHMS MAX.
4. INSULATION RESISTANCE: 1000 MEGOHMS MIN @ 500 VDC.
5. DIELECTRIC STRENGTH : 1000 VAC RMS 60Hz, 1MIN.

**MECHANICAL:**

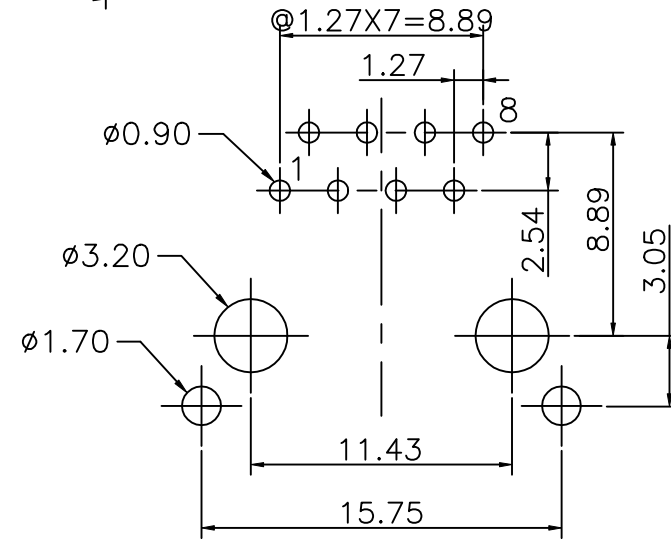
- ▲ 1. HOUSING MATERIAL : PBT UL94V-0.
2. CONTACT MATERIAL : PHOSPHOR BRONZE t=0.35mm.
3. PLATING : GOLD PLATING OVER NICKEL.
4. OPERATING LIFE : 750 CYCLES MIN.
5. PCB RETENTION PRE-SOLDER : 1 LB MIN.
6. PCB RETENTION POST-SOLDER: 10 LBS MIN.

**ENVIRONMENTAL:**

1. STORAGE : -40°C TO +85°C.
  - ▲ 2. OPERATION: 0°C TO 70°C.
  - ▲ 3. WAVE SOLDER TEMPERATURE: 230~250°C(5~10SECONDS).
- MATES WITH MODULAR PLUG CONFORMING TO FCC PART 68, SUBPART F.  
CUL FILE NO. E163191

▲ ROHS PART NUMBER: E5288-3X0X4X-L

- |                                 |                         |
|---------------------------------|-------------------------|
| SHIELD PLATING:                 | GOLD PLATING:           |
| 1- TIN PLATING,W/ SIDE TABS     | 1- 3u" 2- 6u"           |
| 2- NICKEL PLATING,W/ SIDE TABS  | 3-15u" 4-30u"           |
| S- TIN PLATING,W/O SIDE TABS    | 5-50u"                  |
| T- NICKEL PLATING,W/O SIDE TABS | 0-PBT+15%G.F (BK)       |
|                                 | 1-PBT+30%G.F (BK)       |
|                                 | L-PBT+30%G.F (YELLOW) ▲ |



DETACHED LISTS	← MM (INCH) →		DFTO SAMMY	DATE 03/16/05	FULL RISE ELECTRONIC CO., LTD	
	TOLERANCES EXCEPT AS NOTED		CHKDANKUE	DATE 2005/12/14		
	MM	±	MFO	DATE	TITLE	
	.0 ±0.20	±	APPV LUSHENG	DATE 2005/12/14	RJ45 TOP ENTRY PCB MODULAR JACK(DIP TYPE)	
.00 ±0.15	±	MATERIAL :	QTY :	DRAWING NO. GE523014-LC		
.000 ±0.075	±	FINISH :	SCALE : 3:1	/PART NO. SEE NOTE		
ANGLES ±		DO NOT SCALE DRAWING	SHEET X	OF Y	REV 1	
THIRD ANGLE PROJECTION						

# Mouser Electronics

Authorized Distributor

Click to View Pricing, Inventory, Delivery & Lifecycle Information:

Pulse:

[E5288-310141-L](#) [E5288-320045-L](#)