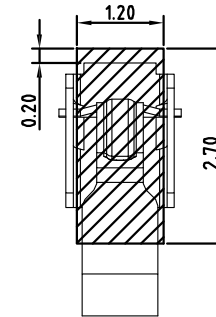
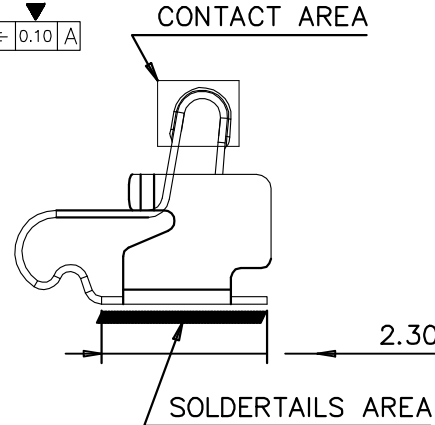
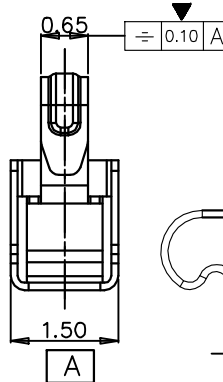
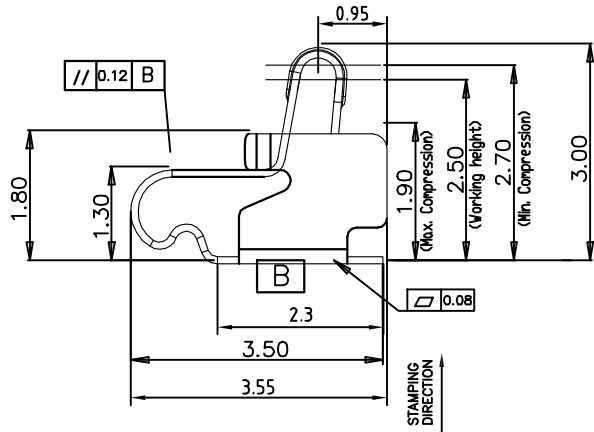
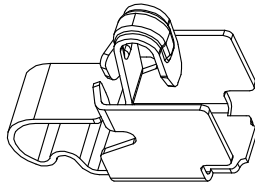
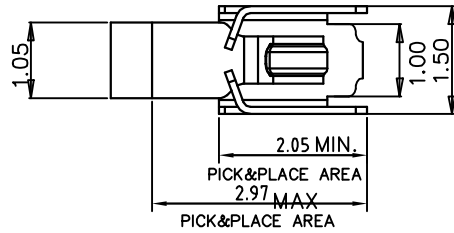
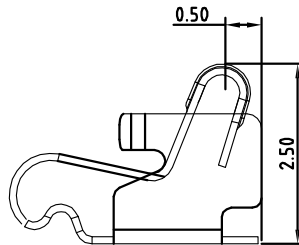
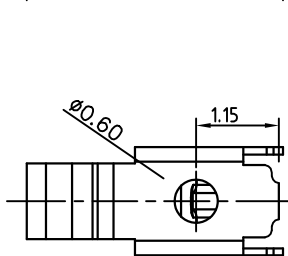


	A	B	C	D	E	F	G
MD	Description		Please follow Pulse Limits for the hazardous substances (RoHS, halogens) in the document "Pulse Hazardous Substances (HS) Limits (RPE002-03)" and "Vendor Survey Questionnaire, Material Composition (LOM-SAF-L0040)".	Reliability Test Spec according to WIHS7.5.33 (Reliability Test Working Instruction) Default test standard is Test Standard A if no definition			
P2	Change the Logo						

- NOTES: UNLESS OTHERWISE SPECIFIED
1. DIM. MARKED ▼ TO BE CHECKED.
  2. MATERIAL: Ycut-FX-EH THICKNESS T=0.10mm
  3. NO CRACK APPEARS ON CONTACT BALL SHAPE.
  4. NO LINES APPEARS ON BENDING AREA.
  5. ALL UNSPECIFIED RADII TO BE 0.05 MAXIMUM .
  6. BURR: 0.03MAX; CUMBER: 1.5MM MAX/500MM; TWIST: 20°/500MM.
  7. PRE-LOAD FORCE: 0.40N ON CONTACT POINT
  8. PLATING: 3u" Min GOLD PLATING ON CONTACT AREA, 1u" Min GOLD PLATING ON SOLDER AREA, 50u" MIN NICKEL PLATING OVER ALL



RECOMMENDED PCB LAYOUT  
DEFAULT TOLERANCE IS ±0.05MM




STATE AT WORKING HIGHT 2.50

Confidential  
This is a proprietary information of Pulse Suzhou.  
No reproduction/copying is allowed without permission.

Functional Characteristics Key (Cpk requirement : Cpk) >  
 ● Process Capability Studies required ( total pcs )  
 ● Ongoing Statistical Process Control Required ( total pcs )  
 ● Critical dimension need to be measured, no CPK requirement ( total pcs )

- .X ± 0.15
- .XX ± 0.10
- .XXX ± 0.05
- X: ± 5°

PULSE (SUZHOU) WIRELESS PRODUCTS CO.LTD.		THIRD ANGLE PROJECTION		SHEET NUMBER 1 / 1				
 99 HUOLU RD. SUZHOU NEW DISTRICT 215009 P.R.CHINA		GENERAL TOLERANCE						
		CUSTOMER NUMBER						
PRODUCT(S) SW0182N		SCALE 4.000		DESIGN	JACKIE	JUN-28-18		
		DOCUMENT NUMBER SW0182N		CHECKED	MARK	Nov-22-17		
		PART VERSION P01		APPROVED	JAMES	Nov-22-17		
ITEM TX80103-001(CLIP)		DOCUMENT VERSION P2		P2	March-07-19	CHRIS		
		MOD		P1	JUN-28-18	JACKIE		
		DATE						
		NAME						

# Mouser Electronics

Authorized Distributor

Click to View Pricing, Inventory, Delivery & Lifecycle Information:

Pulse:

[SW0182N](#)