

CX2043LNL

- Balun Transformer, 1:1.5
- IMPEDANCE = 75 OHMS
- 1MHz-1GHz
- Surface Mount

NOTES: UNLESS OTHERWISE SPECIFIED

1. OPERATING TEMPERATURE: -40°C TO +85°C
2. STORAGE TEMPERATURE: -50°C TO +125°C
3. JEDEC MOISTURE: LEVEL 1.
4. DIMENSIONS ARE IN INCHES WITH THE FOLLOWING TOLERANCE:
.XX= ±.01
.XXX= ±.005
5. OPTIONAL TAPE & REEL PACKAGING CAN BE ORDERED
BY ADDING A "T" SUFFIX TO THE PART NUMBER(EX: CX2043LNLT)
6. ROHS COMPLIANT



ELECTRICAL SPECIFICATIONS: @ 25°C

RETURN LOSS:

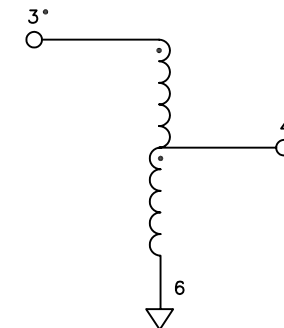
FREQUENCY	RETURN LOSS
1 MHz	-14 dB MINIMUM
5 MHz	-17 dB MINIMUM
50 MHz	-20 dB MINIMUM
100 MHz	-20 dB MINIMUM
300 MHz	-20 dB MINIMUM

FREQUENCY	RETURN LOSS
500 MHz	-18 dB MINIMUM
1 GHz	-14 dB MINIMUM

INSERTION LOSS:

FREQUENCY	CALCULATED ATTENUATION
1 MHz	-1 dB MAXIMUM
5 MHz	-1 dB MAXIMUM
50 MHz	-.6 dB MAXIMUM
100 MHz	-.6 dB MAXIMUM
300 MHz	-.6 dB MAXIMUM

FREQUENCY	CALCULATED ATTENUATION
500 MHz	-.6 dB MAXIMUM
1 GHz	-1 dB MAXIMUM



SCHEMATIC

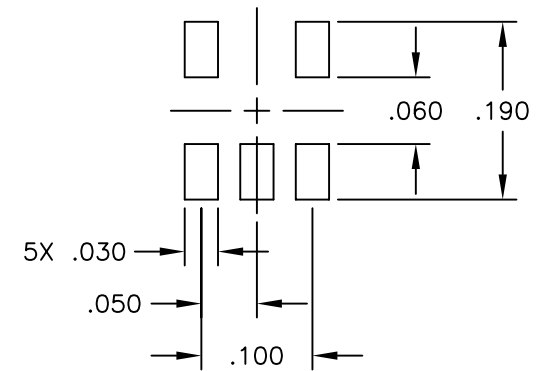
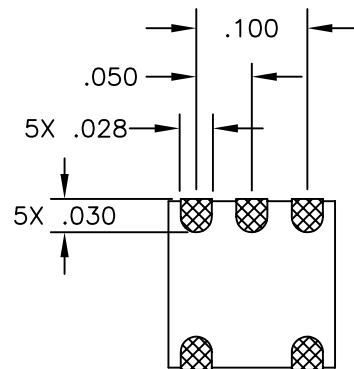
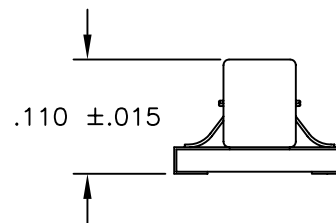
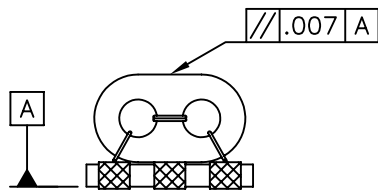
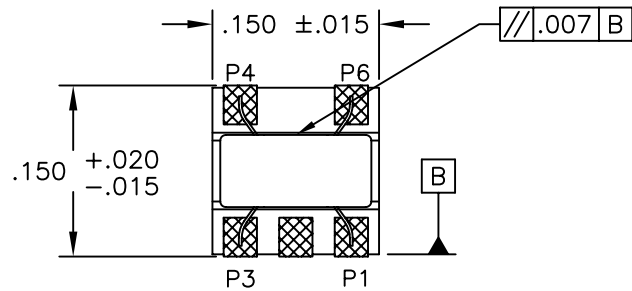
© Copyright, 2014. Pulse Electronics Corp. All rights reserved. Drawing specifications subject to change without notice. (03/14/14)

PULSE CONFIDENTIAL
&
PROPRIETARY

PRODUCT SPECIFICATION:
XFMR, RF, SGL, RAC, 1:1.5

DWG. NO./ PART NO.	SHEET:	REV.
CX2043LNL	1	M10

MECHANICAL SPECIFICATIONS:



SUGGESTED LAND PATTERN

© Copyright, 2014. Pulse Electronics Corp. All rights reserved. Drawing specifications subject to change without notice. (03/14/14)

PULSE CONFIDENTIAL
&
PROPRIETARY

PRODUCT SPECIFICATION:
XFMR, RF, SGL, RAC, 1:1.5

DWG. NO./ PART NO.	SHEET:	REV.
CX2043LNL	2	M10

Mouser Electronics

Authorized Distributor

Click to View Pricing, Inventory, Delivery & Lifecycle Information:

Pulse:

[CX2043LNL](#)