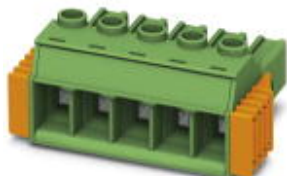


Printed-circuit board connector - PC 5/ 5-STCL1-7,62 GY BD2:- RSO - 1710610

Please be informed that the data shown in this PDF Document is generated from our Online Catalog. Please find the complete data in the user's documentation. Our General Terms of Use for Downloads are valid (<http://phoenixcontact.com/download>)

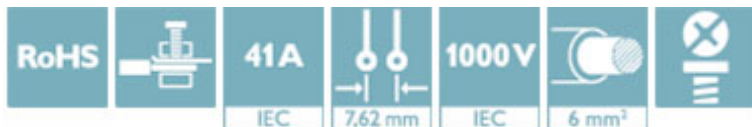
PCB connector, nominal current: 41 A, rated voltage (III/2): 1000 V, number of positions: 5, pitch: 7.62 mm, connection method: Screw connection with tension sleeve, color: green, contact surface: Tin



The figure shows a 5-pos. version of the product

Your advantages

- ✓ Well-known connection principle allows worldwide use
- ✓ Low temperature rise, thanks to maximum contact force
- ✓ Allows connection of two conductors
- ✓ Integrated double steel spring provides additional safety in the event of temperature and power fluctuations
- ✓ 600 V UL approval in the smallest of dimensions
- ✓ The automatically locking Click and Lock system prevents accidental disconnection



Key Commercial Data

Packing unit	50 pc
Minimum order quantity	100 pc
GTIN	
GTIN	4055626167589

Technical data

Dimensions

Length [l]	35.3 mm
Width [w]	46.25 mm
Height [h]	19.7 mm
Pitch	7.62 mm
Dimension a	30.48 mm

General

Printed-circuit board connector - PC 5/ 5-STCL1-7,62 GY BD2:- RSO - 1710610

Technical data

General

Range of articles	PC 5/..-STCL1
Number of positions	5
Connection method	Screw connection with tension sleeve
Insulating material group	I
Rated voltage (III/2)	1000 V
Nominal current I _N	41 A
Nominal cross section	6 mm ²
Flammability rating according to UL 94	V0
Note	Tightening torque ≤ 4 mm ² is 0.5 Nm to 0.6 Nm, > 4 mm ² is 0.7 Nm to 0.8 Nm

Standards and Regulations

Flammability rating according to UL 94	V0
--	----

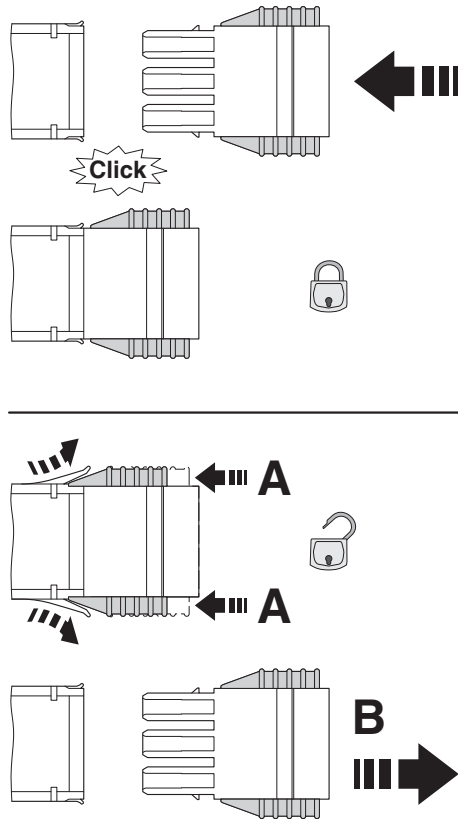
Environmental Product Compliance

China RoHS	Environmentally Friendly Use Period = 50
	For details about hazardous substances go to tab "Downloads", Category "Manufacturer's declaration"

Drawings

Printed-circuit board connector - PC 5/ 5-STCL1-7,62 GY BD2:- RSO - 1710610

Schematic diagram



Click and Lock system method of operation

Approvals

Approvals

Approvals

EAC / cULus Recognized

Ex Approvals

Approval details


EAC



B.01742

Printed-circuit board connector - PC 5/ 5-STCL1-7,62 GY BD2:- RSO - 1710610

Approvals

cULus Recognized		http://database.ul.com/cgi-bin/XYV/template/LISEXT/1FRAME/index.htm	E60425-19920722
	B	C	
Nominal voltage UN	600 V	600 V	
Nominal current IN	41 A	41 A	
mm ² /AWG/kcmil	24-8	24-8	

Phoenix Contact 2018 © - all rights reserved
<http://www.phoenixcontact.com>

PHOENIX CONTACT GmbH & Co. KG
Flachsmarktstr. 8
32825 Blomberg
Germany
Tel. +49 5235 300
Fax +49 5235 3 41200
<http://www.phoenixcontact.com>

Mouser Electronics

Authorized Distributor

Click to View Pricing, Inventory, Delivery & Lifecycle Information:

[Phoenix Contact:](#)

[1710610](#)