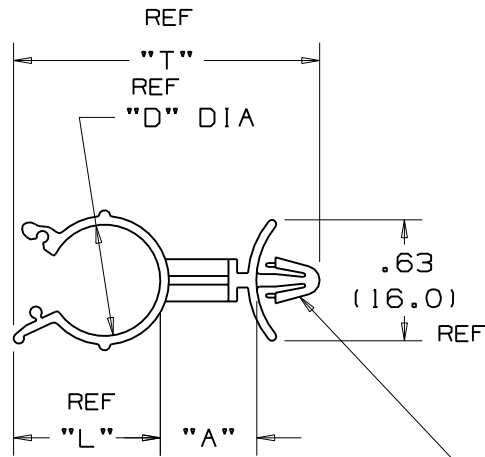
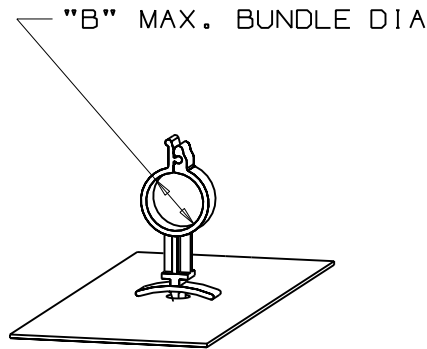
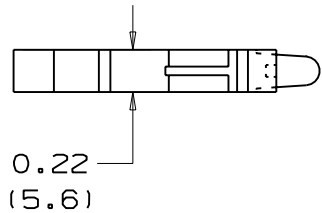


THIS COPY IS PROVIDED ON A RESTRICTED BASIS AND IS NOT TO BE USED IN ANY WAY DETRIMENTAL TO THE INTERESTS OF PANDUIT CORP.



| PANDUIT PART NO. | "A" in/mm | "L" in/mm REF | "D" in/mm REF | "T" in/mm REF | "B" MAX. BUNDLE DIA. in/mm | WEIGHT lbs. 100 (g) pcs |
|------------------|--------------|---------------------|---------------------|---------------------|----------------------------------|-------------------------------|
| WS25-25 | 0.25(6.4) | 0.46(11.7) | 0.30(7.6) | 1.04(26.4) | 0.25(6.4) | 0.11(50) |
| WS25-50 | 0.50(12.7) | 0.46(11.7) | 0.30(7.6) | 1.29(32.8) | 0.25(6.4) | 0.13(59) |
| WS25-75 | 0.75(19.1) | 0.46(11.7) | 0.30(7.6) | 1.54(39.1) | 0.25(6.4) | 0.15(68) |
| WS35-25 | 0.25(6.4) | 0.57(14.5) | 0.42(10.7) | 1.15(29.2) | 0.35(8.9) | 0.12(54) |
| WS35-50 | 0.50(12.7) | 0.57(14.5) | 0.42(10.7) | 1.40(35.6) | 0.35(8.9) | 0.14(64) |
| WS35-75 | 0.75(19.1) | 0.57(14.5) | 0.42(10.7) | 1.65(41.9) | 0.35(8.9) | 0.16(73) |
| WS50-25 | 0.25(6.4) | 0.72(18.3) | 0.58(14.7) | 1.30(33.0) | 0.47(11.9) | 0.14(64) |
| WS50-50 | 0.50(12.7) | 0.72(18.3) | 0.58(14.7) | 1.55(39.4) | 0.47(11.9) | 0.16(73) |
| WS50-75 | 0.75(19.1) | 0.72(18.3) | 0.58(14.7) | 1.80(45.7) | 0.47(11.9) | 0.18(82) |
| WS75-25 | 0.25(6.4) | 1.07(27.2) | 0.96(24.4) | 1.65(41.9) | 0.78(19.8) | 0.16(73) |
| WS75-50 | 0.50(12.7) | 1.07(27.2) | 0.96(24.4) | 1.90(48.3) | 0.78(19.8) | 0.18(82) |
| WS75-75 | 0.75(19.1) | 1.07(27.2) | 0.96(24.4) | 2.15(54.6) | 0.78(19.8) | 0.20(91) |

FITS 0.187(4.7)/0.192(4.8) DIA. HOLE
PANEL THK. 0.03(0.8)/0.08(2.0)



NOTES:

- SEE CURRENT PRICE SHEET FOR PART NUMBER SUFFIX DESIGNATION FOR PACKAGE SIZE AND COLOR.

(DIMENSIONS IN PARENTHESES ARE IN METRIC.)

CAD FILENAME/LAYERS

G00239CT_PB_WCS_03



CORP.

TINLEY PARK, ILLINOIS

WIRE CLIP STANDOFF

| REV | DATE | BY | CHK | DESCRIPTION | ECN | R | CUST | SUP |
|-----|---------|-----|-----|---------------------------------------|----------|---|------|-----|
| 3 | 1/25/06 | JAD | | REMOVED 'M' FROM END OF EACH PART NO. | GB0239CT | 3 | | |
| 2 | 6/27/01 | LGG | | UPDATED FOR WEB (ADDED REF) | GB0239CT | 2 | | |
| 1 | 7/31/95 | CBJ | | ADDED NOTE | GB0239CT | 1 | | |
| R | 7/26/95 | CBJ | | INITIAL RELEASE | GB0239CT | R | | |

UNLESS OTHERWISE SPECIFIED,
DIMENSIONAL TOLERANCES ARE:
(.X) ±0.1(2.5) (.XXX) ±0.020(1.5)
(.XX) ±0.05(1.3) ANGLES ±5°

UNLESS OTHERWISE SPECIFIED,
ALL DIMENSIONS ARE GIVEN
IN INCHES, THIRD ANGLE PROJECTION.

DRAWN BY CBJ
DATE 7/26/95
CHK'D

MAT'L:
NYLON 6/6

SCALE
DRAWING NO.
GB0239CT
DWG
A
SIZE

Mouser Electronics

Authorized Distributor

Click to View Pricing, Inventory, Delivery & Lifecycle Information:

Panduit:

[WS50-75-C](#) [WS25-25-M](#) [WS35-25-C](#) [WS35-50-M](#) [WS35-75-M](#) [WS50-25-M](#) [WS75-25-M](#) [WS75-50-M](#) [WS75-75-M](#)