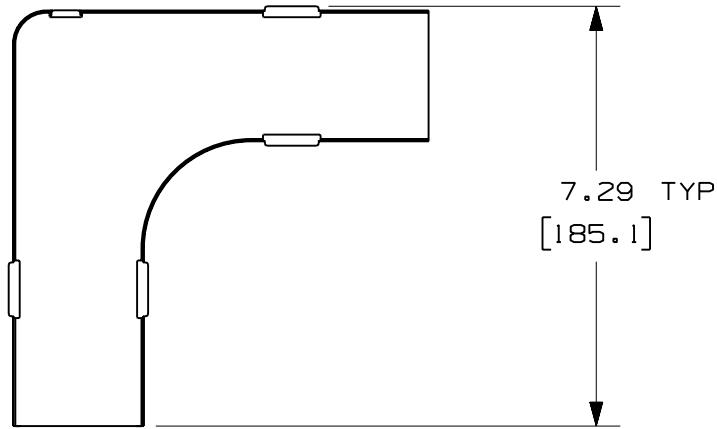


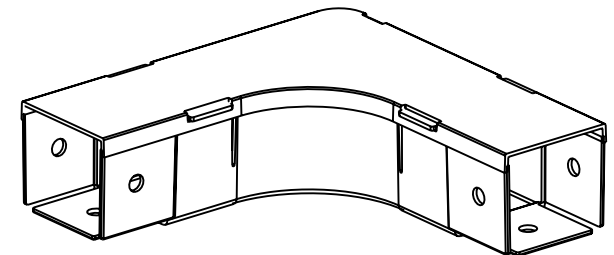
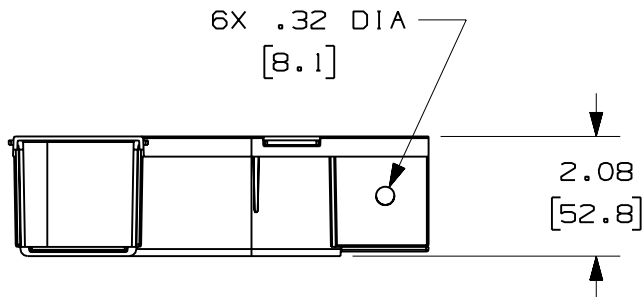
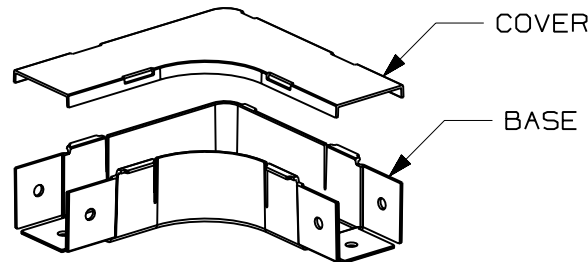


PANDUIT PART NUMBER	WEIGHT
FRA2X2	0.34 LB/EACH (152g/EACH)



**H** NOTES:

1. SEE CURRENT CATALOG FOR ADDITIONAL PART SUFFIXES TO INDICATE COLOR AND/OR PACKAGE QUANTITY.
2. THE FIBER-DUCT 2x2 AND FIBERRUNNER 2x2 HORIZONTAL RIGHT ANGLE FITTING IS DESIGNED WITH A MINIMUM 2" (50.8) BEND RADIUS TO PROTECT FIBER OPTIC CABLES.
3. DIMENSIONS IN PARENTHESES ARE IN METRIC.



ENG. REF.: D35245CD\_DC\_FRA2X2\_03.prt

CAD FILENAME/LAYERS

**D** FRA2X2.pdf

**PANDUIT** CORP TINLEY PARK, ILLINOIS  
 FIBER-DUCT 2x2 AND FIBERRUNNER 2x2  
 HORIZONTAL RIGHT ANGLE FITTING (FRA2X2)  
**E** CUSTOMER DRAWING

UNLESS OTHERWISE SPECIFIED,  
 DIMENSIONAL TOLERANCES ARE:

(.X) ± (.XXX) ±  
 (.XX) ± .03 (.8) ANGLES ±

UNLESS OTHERWISE SPECIFIED,  
 ALL DIMENSIONS ARE GIVEN IN  
 INCHES, THIRD ANGLE PROJECTION.

DRAWN BY JBA

MAT'L:

DATE 5-20-97

ABS

SCALE NONE

DRAWING NO.

35245-30

DWG

A

SIZE

CHK'D HIW **F**

REV	DATE	BY	CHK	DESCRIPTION	ECN	R	CUST	SUP	GMBH
-	-----	---	---	H. REVISED GENERAL NOTES. G. REVISED PART WEIGHT.	-----	--	--		
-	-----	---	---	F. REVISED MATERIAL. E. REVISED DRAWING TITLE.	-----	--	--		
3	12-28-06	MSO	RN	D. REVISED CAD FILENAME. C. REVISED AND REDRAWN.	35245-30	RN	RN		

# Mouser Electronics

Authorized Distributor

Click to View Pricing, Inventory, Delivery & Lifecycle Information:

[Panduit:](#)

[FRA2X2BL](#) [FRA2X2LG](#)