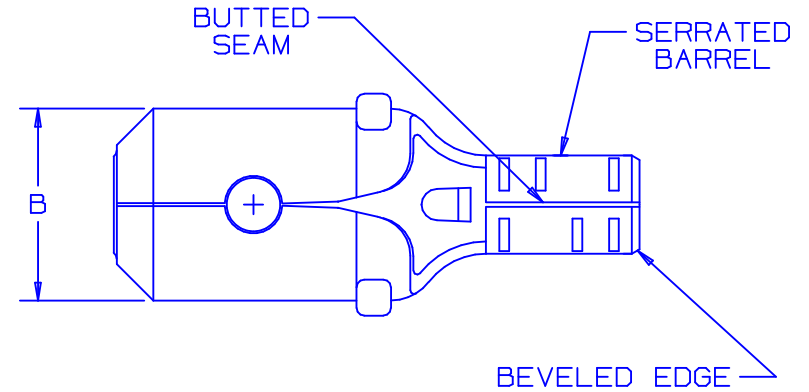
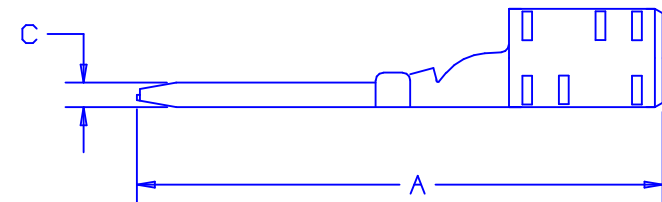


PART NUMBER	WIRE RANGE AWG	DIMENSIONS in.		
		A $\pm .02$	B $\pm .01$	C $\pm .01$
D18-250MB	22-18	.69 (17.4)	.25 (6.3)	.03 (0.76)
D14-250MB	16-14	.69 (17.4)	.25 (6.3)	.03 (0.76)



NOTES:

- USED FOR:  
A. 302° F (150 C) MAX. TEMP RATING  
B. STRANDED COPPER WIRE ONLY
- MATERIAL:  
STAMPING - .016" (.406) THK BRASS,  
NICKEL PLATED.
- PACKAGE QTY: STD. PKG. - C = 100  
BULK PKG. - M = 1000
- DIMENSIONS IN BRACKETS ARE IN MILLIMETERS
- INSTALLATION TOOLS: CT-100, CT-200.
- WIRE STRIP LENGTH:  $9/32 \begin{matrix} +1/32 \\ -0 \end{matrix}$  (7.1  $\begin{matrix} +0.8 \\ -0 \end{matrix}$ )



07	2/04	JHNU		REVISED NOTE 5: ADDED CT-200.	11533		
06	8/97	TM	RJS	ADDED NOTE #6, WAS TIN PLATED	06105	LA	DH
05	2/96	ED		REVISED NOTES, TABLE, & BARREL DESIGN FILESPEC WAS: A41320A.04	03967	LA	DH
04	12/89	DL	LM	REVISED DWG. TO CURRENT DESIGN WITH LESS MAT'L IN TRANSITION AREA		LM	DH
03	8/89	JP	LM	STAMPING WAS .032 COPPER		LM	DH
REV	DATE	BY	CHK	DESCRIPTION	ECN#	CUST	PM

A41320\_07

**PANDUIT** CORP.

TINLEY PARK, ILLINOIS

NON-INSULATED MALE DISCONNECT  
.250 X .032 (6.35 X 0.81)

DRAWN BY DAW CHK'D LM SCALE NONE DRAWING NO. A41320

# Mouser Electronics

Authorized Distributor

Click to View Pricing, Inventory, Delivery & Lifecycle Information:

[Panduit:](#)

[D14-250MB-M](#) [D18-250MB-M](#) [D14-250MB-C](#) [D18-250MB-C](#)