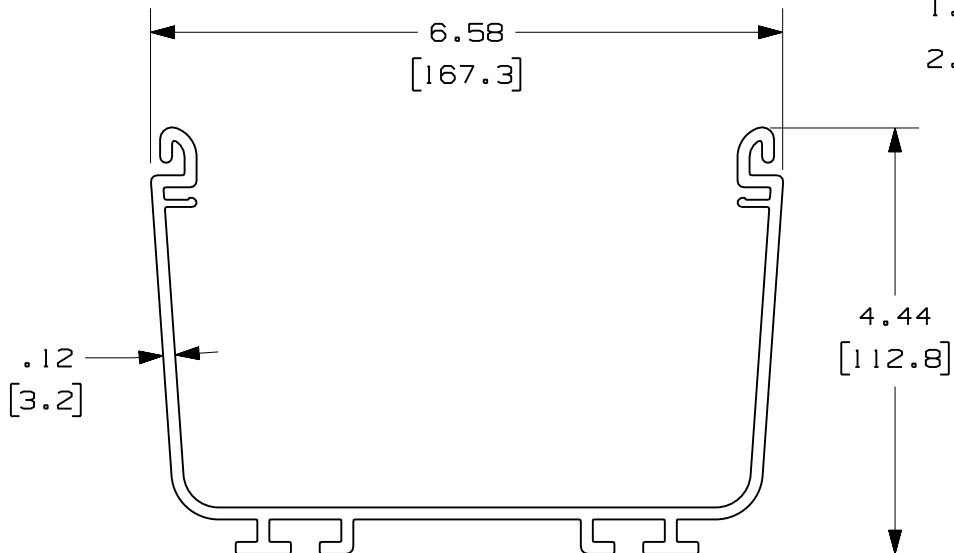




PANDUIT PART NUMBER	LENGTH	WEIGHT	WEIGHT/LENGTH
FR6X4**2 (SEE NOTE 1)	78.74 IN ±.18 IN (2000.0mm ±4.6mm)	9.71 LB (4404g)	1.48 LB/FT (22.0g/cm)
FR6X4**6 (SEE NOTE 1)	72.00 IN ±.18 IN (1828.8mm ±4.6mm)	8.88 LB (4028g)	1.48 LB/FT (22.0g/cm)

**NOTES:**

1. SEE CURRENT CATALOG FOR ADDITIONAL PART SUFFIXES TO INDICATE COLOR AND/OR PACKAGE QUANTITY.
2. DIMENSIONS IN PARENTHESES ARE IN METRIC.



ENG. REF.: D37185CC\_DC\_FR6X4\_01.prt

CAD FILENAME/LAYERS FR6X4.pdf

**PANDUIT** CORP TINLEY PARK, ILLINOIS  
**FIBERRUNNER 6x4 CHANNEL**  
 (FR6X4\*\*2, FR6X4\*\*6)  
 CUSTOMER DRAWING

UNLESS OTHERWISE SPECIFIED,  
 DIMENSIONAL TOLERANCES ARE:  
 (.X) ± (.XXX) ±  
 (.XX) ±.03 (0.8) ANGLES ±

UNLESS OTHERWISE SPECIFIED,  
 ALL DIMENSIONS ARE GIVEN IN  
 INCHES, THIRD ANGLE PROJECTION.

REV	DATE	BY	CHK	DESCRIPTION	ECN	R	CUST	SUP	GMBH
-	-----	---	---	K. REVISED ENTIRE CHART J. REVISED CAD FILENAME	-----	--	--		
5	7-21-06	DTP	RN	I. REVISED DRAWING TITLE H. REVISED AND REDRAWN	37185-82	RN	RN		

DRAWN BY: JHNU  
 DATE: 5-11-00  
 CHK'D: NEY

MAT'L: PVC

SCALE: NONE  
 DRAWING NO.: 37185-82  
 DWG SIZE: A

# Mouser Electronics

Authorized Distributor

Click to View Pricing, Inventory, Delivery & Lifecycle Information:

[Panduit:](#)

[FR6X4BL6](#)