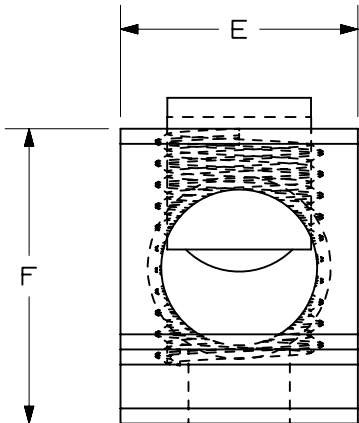
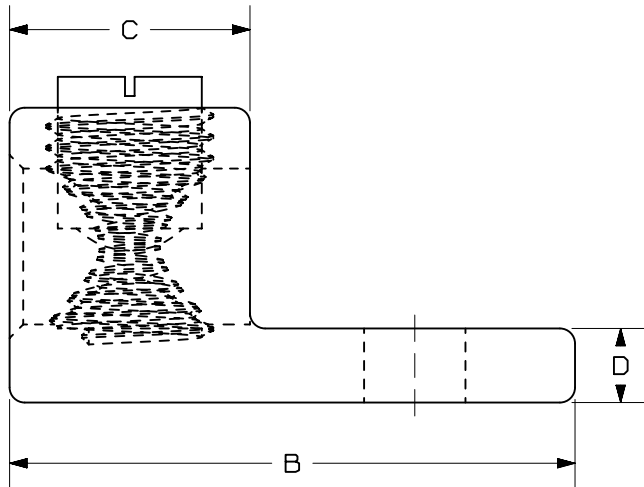
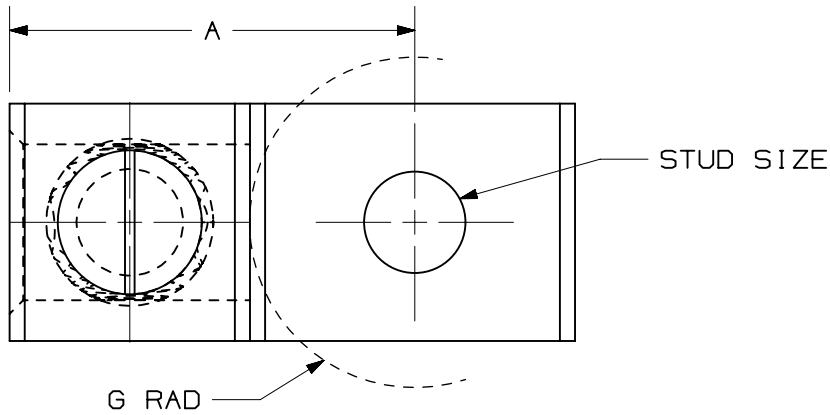


THIS COPY IS PROVIDED ON A RESTRICTED BASIS AND IS NOT TO BE USED IN ANY WAY DETRIMENTAL TO THE INTERESTS OF PANDUIT CORP.



NOTES:

1. MATERIAL:  
BODY - ALUMINUM, TIN PLATED  
SCREW - ALUMINUM, TIN PLATED  
(NOTE LAMA6-14-C AND LAMA2-14-C HAVE ZINC PLATED STEEL SCREWS)
2. cULus LISTED FOR USE UP TO 600V & TEMPERATURE RATED 90°C (AL9CU)
3. DUAL RATED FOR USE WITH COPPER OR ALUMINUM STRANDED CODE CONDUCTOR
4. PARTS ARE RoHS COMPLIANT
5. USE OF OXIDE INHIBITING JOINT COMPOUND LIKE PANDUIT CMP-100 RECOMMENDED FOR PAD TO PAD AND CONDUCTOR SURFACES
6. SEE INSTRUCTION SHEET T-PMPI-223-PC FOR TIGHTENING TORQUE INFORMATION
7. DIMENSIONS IN BRACKETS ARE MILLIMETERS



PART NUMBER	WIRE RANGE COPPER/ALUMINUM	WIRE STRIP LENGTH	STUD SIZE IN.	PACKAGING QUANTITY	DIMENSIONS - IN [ mm ]							HEX KEY
					A ±.03 [ 0.8 ]	B ±.06 [ 1.5 ]	C ±.04 [ 1 ]	D ±.02 [ 0.5 ]	E ±.04 [ 1 ]	F ±.04 [ 1 ]	G ±.02 [ 0.5 ]	
LAMA6-14-C	14 AWG - 6 AWG	.38 [ 9.7 ]	1/4	100	.81 [ 20.6 ]	1.06 [ 26.9 ]	.37 [ 9.5 ]	.09 [ 2.3 ]	.50 [ 12.7 ]	.50 [ 12.6 ]	.43 [ 10.9 ]	SLOTTED SCREWDRIVER
LAMA2-14-C	14 AWG - 2 AWG	.47 [ 11.9 ]	1/4	100	.84 [ 21.3 ]	1.17 [ 29.8 ]	.47 [ 12 ]	.11 [ 2.7 ]	.50 [ 12.7 ]	.55 [ 13.9 ]	.38 [ 9.7 ]	SLOTTED SCREWDRIVER
LAMA1/0-14-L	14 AWG - 1/0 AWG	.63 [ 15.9 ]	1/4	50	1.06 [ 26.8 ]	1.47 [ 37.4 ]	.63 [ 15.9 ]	.19 [ 4.9 ]	.62 [ 15.7 ]	.77 [ 19.5 ]	.43 [ 10.9 ]	SLOTTED SCREWDRIVER
LAMA2/0-14-L	14 AWG - 2/0 AWG	.62 [ 15.7 ]	1/4	50	1.08 [ 27.5 ]	1.46 [ 37.1 ]	.63 [ 15.9 ]	.19 [ 4.9 ]	.63 [ 15.9 ]	.77 [ 19.5 ]	.41 [ 10.4 ]	3/16
LAMA500-38-5	4 AWG - 500 kcmil	1.22 [ 31.0 ]	3/8	5	1.93 [ 48.9 ]	2.82 [ 71.5 ]	1.24 [ 31.5 ]	.31 [ 7.9 ]	1.50 [ 38.0 ]	1.56 [ 39.7 ]	.74 [ 18.8 ]	1/2

PART NUMBER

SEE TABLE

TITLE

LAMA SERIES ALUMINUM MECHANICAL CONNECTORS


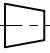
CUSTOMER DRAWING

ITEM REVISION NAME

03468NBA/00

DATASET FILE NAME

03468NBA-DC/00



THIRD ANGLE  
PROJECTION

MATERIAL

SEE NOTES

DRAWING NUMBER

03468NBA - DC

DRAWN BY

JHNU

DATE

10-13-23

CHK

JHNU

SCALE

NONE

SHEET 1 OF 1

B

00	10-13-23	JHNU	JHNU	MRWA	DRAWING RELEASED	135288
REV	DATE	BY	CHK	APR	DESCRIPTION	ECN

# Mouser Electronics

Authorized Distributor

Click to View Pricing, Inventory, Delivery & Lifecycle Information:

[Panduit:](#)

[LAMA1/0-14-L](#) [LAMA500-38-5](#) [LAMA2/0-14-L](#) [LAMA2-14-C](#) [LAMA6-14-C](#)