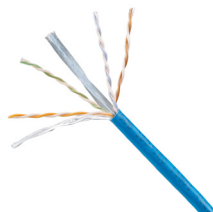


TX6000™ Enhanced Category 6 U/UTP Copper Cable

specifications

Category 6 cable shall exceed ANSI/TIA-568.2-D and IEC 61156-5 Category 6 component Standards. The conductors shall be 23 AWG construction with FEP/polyolefin insulation. The copper conductors shall be twisted in pairs, separated by a cross-divider and covered by a low smoke, flame-retardant (CMP) jacket.



technical information

| | |
|--------------------------------|---|
| Electrical performance: | Certified channel performance in a 4-connector configuration up to 100 meters and exceeds ANSI/TIA-568.2-D Category 6 and ISO 11801 Class E Standards at swept frequencies up to 250 MHz Certified component performance up to 100 meters and exceeds the component requirements of ANSI/TIA-568.2-D and IEC 61156-5 Category 6 component Standards at swept frequencies up to 250 MHz |
| Standards compliance: | UL Listed CMP-LP (0.5A) |
| Conductors/insulators: | 23 AWG bare copper wire covered by FEP/polyolefin insulation |
| Insulation diameter: | 0.036"–0.042" (0.91mm–1.07mm) |
| PoE compliance: | Meets IEEE 802.3af, IEEE 802.3at and IEEE 802.3bt for PoE applications |
| Installation tension: | 25 lbf (110 N) maximum |
| Temperature rating: | 32°F to 122°F (0°C to 50°C) during installation -4°F to 194°F (-20°C to 90°C) during operation |
| Cable jacket: | Low smoke, flame-retardant PVC |
| Cable diameter: | 0.225" (5.7mm) nominal |
| Cable weight: | 28 lbs./1000' (13 kg/305m) |
| Packaging: | 1000' (305m) in an easy payout carton Package tested to ISTA Procedure 1A |

key features and benefits

| | |
|--|---|
| Third party tested: | Cable has been tested as part of the TX6000 U/UTP Copper Cabling System by an independent laboratory and complies with the electrical channel requirements of the following Standard: ANSI/TIA-568.2-D Category 6 |
| Guaranteed channel performance above the Standards: | Industry leading guaranteed channel performance exceeds the TIA/ISO Standards with headroom guaranteed |
| Integrated pair divider: | Separates pairs for exceptional cable performance |
| Reelex™ packaging: | Compact carton ensures proper performance and provides quick installation |
| Tested beyond the Standards: | Cable has been characterized to 650 MHz, 400 MHz above the Standard |
| Extended temperature range: | Allows operation in 90°C (194°F) ambient environment providing error-free performance in high-density cabinets and large cable bundles running PoE+ or PoE++ applications |
| Descending length cable markings: | Easy identification of remaining cable reduces installation time and cable scrap |

applications

TX6000 U/UTP Copper Cable is a component of the TX6000 Copper Cabling System. Interoperable and backward compatible, this end-to-end system provides design flexibility to protect network investments well into the future. With certified performance to the ANSI/TIA-568.2-D Category 6 and ISO 11801 Class E Standards, this system will support the following applications:

- Ethernet 10BASE-T, 100BASE-T (Fast Ethernet), 1000BASE-T (Gigabit Ethernet), 10GBASE-T (10 Gigabit Ethernet over limited distances as specified in the industry 10GBASE-T standards)
- 155 Mb/s ATM, 622 Mb/s ATM, 1.2 Gb/s ATM
- Token Ring 4/16

TX6000 U/UTP Copper Cable

Plenum: PUP6004**-WLPZ

Cable Prep Tools

Cable snipping tool: CWST

Wire stripping tool: CJUST

**To designate a color, add suffix BU (Blue), WH (White), YL (Yellow), IG (International Gray), BL (Black), RD (Red), GR (Green), OR (Orange), or VL (Violet).

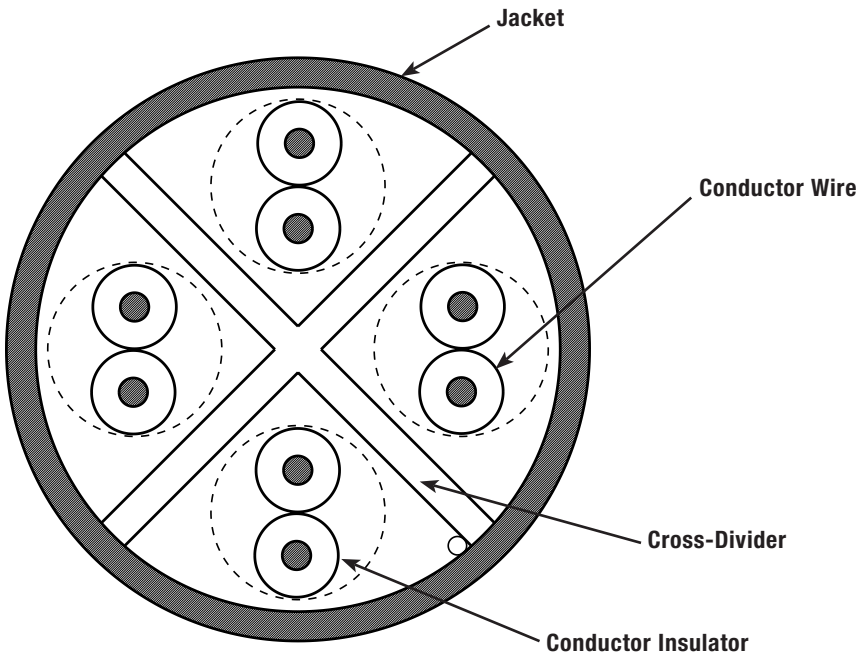
Visit www.panduit.com for connectivity components.

TX6000™ Enhanced Category 6 U/UTP Copper Cable

additional specifications

| Mechanical Test | |
|---------------------------------------|--------------------|
| Ultimate Breaking Strength | >90 lbf (400 N) |
| Minimum Bend Radius | 4 × cable diameter |
| Electrical Test | |
| Nominal Velocity of Propagation (NVP) | CMP — 70% |
| Operating Voltage, Maximum | 80 V |

cable construction



WORLDWIDE SUBSIDIARIES AND SALES OFFICES

| | | | | | |
|--|---|---|--|--|---|
| PANDUIT US/CANADA Phone: 800.777.3300 | PANDUIT EUROPE LTD. London, UK Phone: 44.20.8601.7200 | PANDUIT SINGAPORE PTE. LTD. Republic of Singapore Phone: 65.6305.7575 | PANDUIT JAPAN Tokyo, Japan Phone: 81.3.6863.6000 | PANDUIT LATIN AMERICA Guadalajara, Mexico Phone: 52.33.3777.6000 | PANDUIT AUSTRALIA PTY. LTD. Victoria, Australia Phone: 61.3.9794.9020 |
|--|---|---|--|--|---|

For a copy of Panduit product warranties, log on to www.panduit.com/warranty



For more information
Visit us at www.panduit.com
Contact Customer Service by email: cs@panduit.com
or by phone: 800.777.3300

© 2023 Panduit Corp.
ALL RIGHTS RESERVED.
COSP542-WW-ENG
6/2023

Mouser Electronics

Authorized Distributor

Click to View Pricing, Inventory, Delivery & Lifecycle Information:

[Panduit:](#)

[PUP6004RD-WLPZ](#) [PUP6004BL-WLPZ](#) [PUP6004WH-WLPZ](#) [PUP6004VL-WLPZ](#) [PUP6004BU-WLPZ](#) [PUP6004YL-](#)
[WLPZ](#) [PUP6004GR-WLPZ](#) [PUP6004OR-WLPZ](#) [PUP6004IG-WLPZ](#)