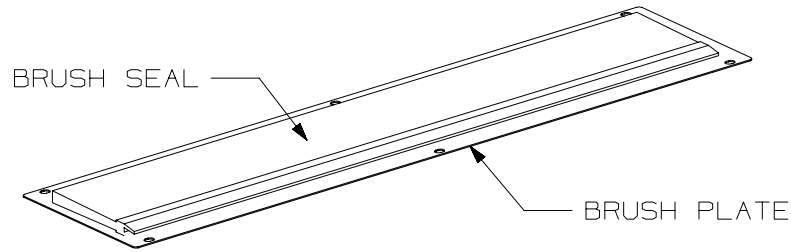


THIS COPY IS PROVIDED ON A RESTRICTED BASIS AND IS NOT TO BE USED IN ANY WAY DETRIMENTAL TO THE INTERESTS OF PANDUIT CORP.

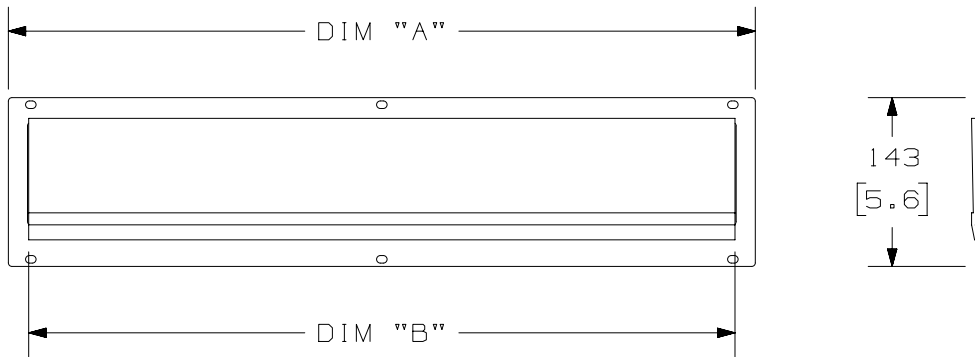


NOTES:

1. VISIT OUR ON-LINE CATALOG AT WWW.PANDUIT.COM FOR A LIST OF CURRENT PARTS APPLICABLE FOR USE WITH THIS PRODUCT.
2. PRIMARY DIMENSIONS ARE IN MILLIMETERS.
3. PARTS SUPPLIED:
 - (1) BRUSH PLATE
 - (1) BRUSH SEAL
 - (6) M5 x 7mm SCREWS (NOT SHOWN)
 - (1) INSTALLATION INSTRUCTIONS (NOT SHOWN)

PART NO.	DESCRIPTION	DIM "A"	DIM "B"	WEIGHT
XG-TCBS1*	FLEXFUSION 1070mm TOP CAP BRUSH SEAL KIT	632 [24.9]	598 [23.5]	0.5 Kg/EACH 1.1 LBS/EACH
XG-TCBS2*	FLEXFUSION 1200mm TOP CAP BRUSH SEAL KIT	782 [30.8]	748 [29.4]	0.6 Kg/EACH 1.3 LBS/EACH

* DENOTES COLOR
ADD SUFFIX "B" FOR BLACK AND "W" FOR WHITE.



TITLE		FLEXFUSION TOP CAP BRUSH SEAL KIT (XG-TCBS1* & XG-TCBS2*)		
		CUSTOMER DRAWING		
ITEM REVISION NAME		00463NGF/00		PANDUIT
DATASET FILE NAME		00463NGF_DC/00A		
				MATERIAL: N/A
				DRAWING NUMBER: 00463NGF - DC
				THIRD ANGLE PROJECTION
REV	DATE	BY	CHK	SCALE
00A	2/16/21	MEX-JAGC	MSH	NONE
DRAWING RELEASE		V09002EM/02		SHT 1 OF 1
REV	DATE	BY	CHK	SCALE
DESCRIPTION		ECN		SIZE
				A

N\GLOBAL_AS\SIZE

Mouser Electronics

Authorized Distributor

Click to View Pricing, Inventory, Delivery & Lifecycle Information:

[Panduit:](#)

[XG-TCBS1W](#) [XG-TCBS1B](#) [XG-TCBS2B](#) [XG-TCBS2W](#)