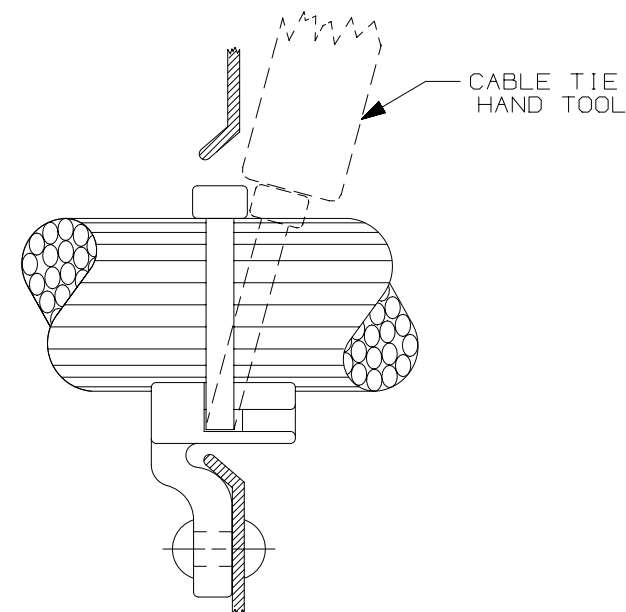
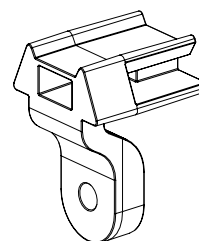
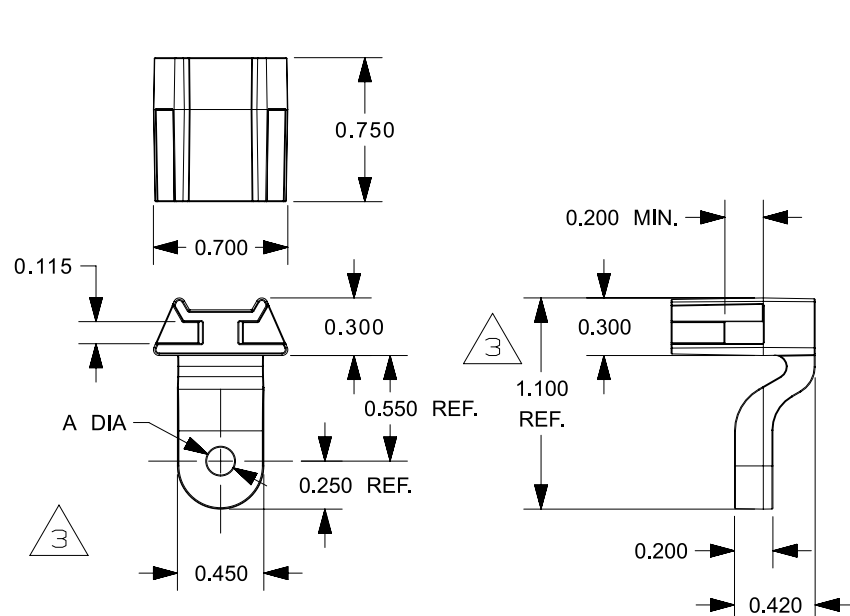

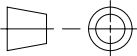


THIS COPY IS PROVIDED ON A RESTRICTED BASIS AND IS NOT TO BE USED IN ANY WAY DETRIMENTAL TO THE INTERESTS OF PANDUIT CORP.

PANDUIT PART NUMBER*	A DIA.	MT'G RIVET	MT'G SCREW	FOR USE WITH THE FOLLOWING PANDUIT CABLE TIES	WEIGHT lbs/100 pcs (g)/100 pcs
LHMS-S5-	0.125 0.135	1/8	#5	M = MINATURE	0.56 (254.24)
LHMS-S6-	0.140 0.150	9/64	#6	I = INTERMEDIATE	0.56 (254.24)
LHMS-S10-	0.190 0.195	3/16	#10	S = STANDARD	0.54 (245.16)

- NOTES:
1. SEE CURRENT PRICE SHEET, SEE [www.panduit.com](http://www.panduit.com) FOR CURRENT PART NUMBER SUFFIX DESIGNATION AND FOR PACKAGE SIZE AND PART COLOR.
  2. CAN SUBSTITUTE #5 SCREW FOR A #6 SELF THREADING SCREW.
  3. CAN SUBSTITUTE #6 SCREW FOR A #8 SELF THREADING SCREW.
  4. BAG MAY CONTAIN EXTRA PIECES TO COMPENSATE FOR VARIANCE IN THE PACKAGING PROCESS. PANDUIT ASSURES MINIMUM PIECE COUNT AS STATED ON THE BAG.



							TITLE					
							LHMS LIGHTENING HOLE MOUNT					
							CUSTOMER DRAWING					
							ITEM REVISION NAME		G03597GG/02			
							DATASET FILE NAME		G03597GG_DC_GB0239BT_03/02C			
3	1/18/2021	RVU	RMHI	JADE	REBUILD MODEL AND UPDATE DWGS. 1.100 WAS 1.084. ADDED NOTE 4. UPDATE NOTES.	GAECN05683	UNLESS OTHERWISE SPECIFIED, DIMENSIONAL TOLERANCES ARE: IN [ mm ]					MATERIAL:
2	6/26/01	LGG			CHG DIM ON 'A' FOR LHMS-S5 WAS .125/.130. ADD REF & & CHG DIM FROM 1.100 TO 1.084.	GB0239BT	.x ± .05 [ 1.3 ]      .xxx ± .010 [ 0.25 ] .xx ± .02 [ 0.5 ]      ANGLES ± 5 °					NYLON 6/6
1	6/26/01	LGG			UPDATED FOR WEB.	GB0239BT						DRAWING NUMBER:
R	5/03/95	CBJ			INITIAL RELEASE.	GB0239BT	THIRD ANGLE PROJECTION					GB0239BT
REV	DATE	BY	CHK	APR	DESCRIPTION	ECN	DRAWN BY	DATE	CHK	SCALE	SIZE	
							CBJ	5/03/95	JHAC	1:1	SHT 1 OF 1	
											A	

# Mouser Electronics

Authorized Distributor

Click to View Pricing, Inventory, Delivery & Lifecycle Information:

[Panduit:](#)

[LHMS-S10-C](#) [LHMS-S5-C](#) [LHMS-S6-C](#)