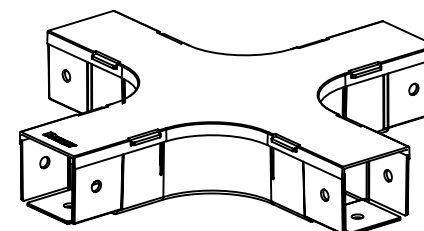
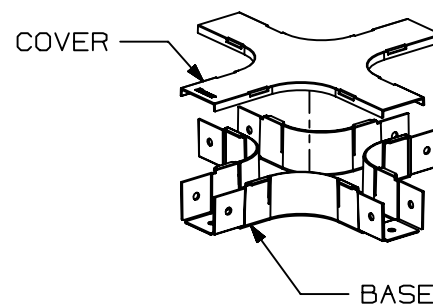
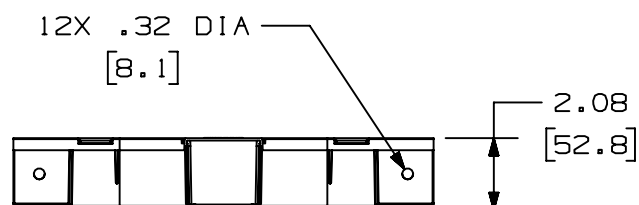
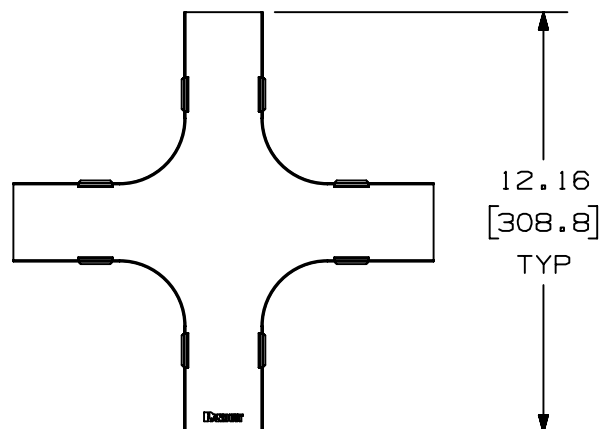


THIS COPY IS PROVIDED ON A RESTRICTED BASIS AND IS NOT TO BE USED IN ANY WAY DETRIMENTAL TO THE INTERESTS OF PANDUIT CORP.

NOTES:

1. SEE CURRENT CATALOG FOR ADDITIONAL PART SUFFIXES TO INDICATE COLOR AND/OR PACKAGE QUANTITY.
2. THE FIBER-DUCT 2x2 AND FIBERRUNNER 2x2 FOUR-WAY CROSS FITTING IS DESIGNED WITH A MINIMUM 2" (50.8) BEND RADIUS TO PROTECT FIBER OPTIC CABLE.
3. PARTS SUPPLIED:
(1) - COVER
(1) - BASE
4. DIMENSIONS IN PARENTHESES ARE IN METRIC.



PANDUIT PART NUMBER	WEIGHT	MATERIAL
FFWC2X2**	0.61 LB/EACH (275g/EACH)	ABS
FFWC2X2L**	0.61 LB/EACH (275g/EACH)	PC/ABS

TITLE
FIBER-DUCT 2x2 AND FIBERRUNNER 2x2 FOUR-WAY
CROSS FITTING - (FFWC2X2**, FFWC2X2L**)

CUSTOMER DRAWING

ITEM REVISION NAME

D35245BV/03

DATASET FILE NAME

D35245BV_DC/03B

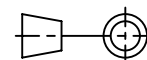
PANDUIT

MATERIAL:

SEE PART NUMBER
TABLE ABOVE

DRAWING NUMBER:

35245-22



THIRD ANGLE
PROJECTION

DRAWN BY	DATE	CHK	SCALE	SHT 1 OF 1	SIZE
PM	1/21/97	CEF	NONE		A

Mouser Electronics

Authorized Distributor

Click to View Pricing, Inventory, Delivery & Lifecycle Information:

[Panduit:](#)

[FFWC2X2LYL](#) [FHDEC2X2LBL](#) [FFWC2X2LBL](#)