

Thank you for your interest in **onsemi** products.
Your technical document begins on the following pages.



Your Feedback is Important to Us!

Please take a moment to participate in our short survey.
At **onsemi**, we are dedicated to delivering technical content that best meets your needs.

Help Us Improve – Take the Survey

This survey is intended to collect your feedback, capture any issues you may encounter, and to provide improvements you would like to suggest.

We look forward to your feedback.

To learn more about **onsemi**, please visit our website at
www.onsemi.com

onsemi and **onsemi** and other names, marks, and brands are registered and/or common law trademarks of Semiconductor Components Industries, LLC dba "**onsemi**" or its affiliates and/or subsidiaries in the United States and/or other countries. **onsemi** owns the rights to a number of patents, trademarks, copyrights, trade secrets, and other intellectual property. A listing of **onsemi** product/patent coverage may be accessed at www.onsemi.com/site/pdf/Patent-Marking.pdf. **onsemi** reserves the right to make changes at any time to any products or information herein, without notice. The information herein is provided "as-is" and **onsemi** makes no warranty, representation or guarantee regarding the accuracy of the information, product features, availability, functionality, or suitability of its products for any particular purpose, nor does **onsemi** assume any liability arising out of the application or use of any product or circuit, and specifically disclaims any and all liability, including without limitation special, consequential or incidental damages. Buyer is responsible for its products and applications using **onsemi** products, including compliance with all laws, regulations and safety requirements or standards, regardless of any support or applications information provided by **onsemi**. "Typical" parameters which may be provided in **onsemi** data sheets and/or specifications can and do vary in different applications and actual performance may vary over time. All operating parameters, including "Typicals" must be validated for each customer application by customer's technical experts. **onsemi** does not convey any license under any of its intellectual property rights nor the rights of others. **onsemi** products are not designed, intended, or authorized for use as a critical component in life support systems or any FDA Class 3 medical devices or medical devices with a same or similar classification in a foreign jurisdiction or any devices intended for implantation in the human body. Should Buyer purchase or use **onsemi** products for any such unintended or unauthorized application, Buyer shall indemnify and hold **onsemi** and its officers, employees, subsidiaries, affiliates, and distributors harmless against all claims, costs, damages, and expenses, and reasonable attorney fees arising out of, directly or indirectly, any claim of personal injury or death associated with such unintended or unauthorized use, even if such claim alleges that **onsemi** was negligent regarding the design or manufacture of the part. **onsemi** is an Equal Opportunity/Affirmative Action Employer. This literature is subject to all applicable copyright laws and is not for resale in any manner. Other names and brands may be claimed as the property of others.

Silicon Carbide (SiC) Module – EliteSiC Power Module for Traction Inverter, Single-Side Cooling, 2.6 mohm, 1200V, Half-Bridge, Straight Power Tabs

NVVR26A120M1WSB

Product Description

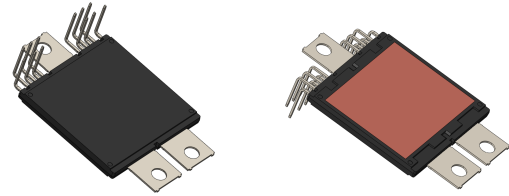
The NVVR26A120M1WSB is part of the VE-Trac™ B2 SiC family of highly integrated power modules for Hybrid (HEV) and Electric Vehicle (EV) traction inverter application. The module integrates 1200 V SiC MOSFET in a half-bridge configuration. To enhance reliability and thermal performance, sintering technology is applied for die attach. The module is designed to meet the AQG324 standard.

Features

- Ultra Low $R_{DS(on)}$
- Aluminum Nitride Isolator
- Ultra-low Stray Inductance ~ 7.1 nH
- $T_{vj,Max} = 175^{\circ}C$ for Continuous Operation
- Automotive Grade SiC MOSFET Chip Technologies
- Sintered Die Technology for High Reliability Performance
- Automotive Module AQG324 Compliant
- PPAP Capable

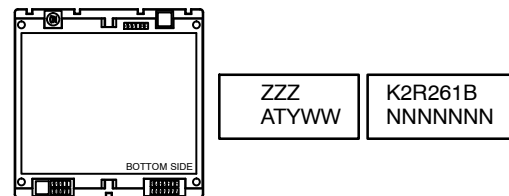
Applications

- Automotive EV/HEV– Traction Inverter



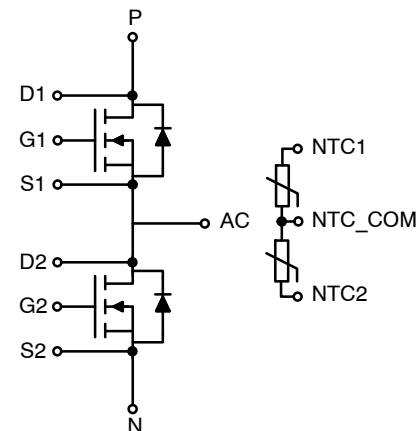
AHPM15-CDE MODULE
CASE MODHT

MARKING DIAGRAM



ZZZ = Assembly Lot Code
K2R261B = Marking Value
AT = Assembly & Test Location
Y = Year
WW = Work Week
NNNN = Serial Number

PIN CONFIGURATION



ORDERING INFORMATION

Device	Package	Shipping
NVVR26A120M1WSB	AHPM15	Tube

NVVR26A120M1WSB

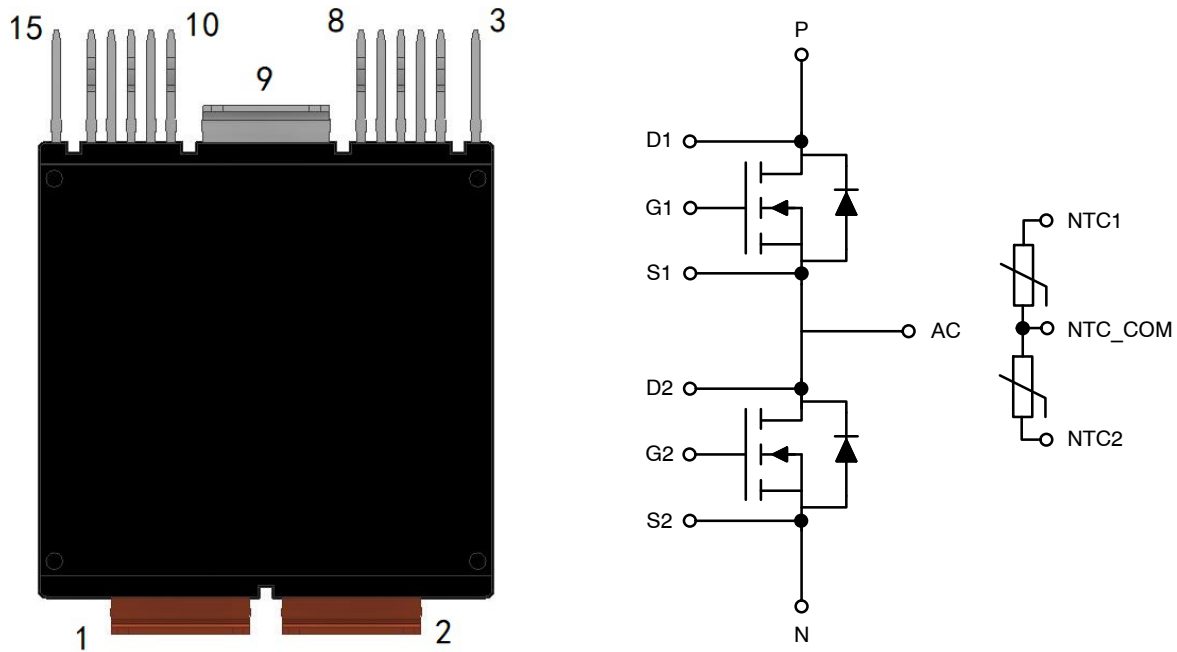


Figure 1. Pin Description

PIN FUNCTION DESCRIPTIONS

Pin No.	Pin Name	Pin Functional Description
1	N	Negative Power Terminal
2	P	Positive Power Terminal
3	D1	High Side MOSFET (Q1) Drain Sense
4	N/C	No Connection
5	S1	High Side MOSFET (Q1) Source
6	G1	High Side MOSFET (Q1) Gate
7	N/C	No Connection
8	N/C	No Connection
9	AC	Phase Output
10	NTC1	NTC 1
11	S2	Low Side MOSFET (Q2) Source
12	G2	Low Side MOSFET (Q2) Gate
13	NTC2	NTC 2
14	NTC_COM	NTC common
15	D2	Low Side MOSFET (Q2) Drain Sense

Materials

DBC Substrate: AIN isolated substrate, basic isolation, and copper on both sides

Lead frame: Pin 1,2 copper without plating. Pin 3 to 15 copper, with tin electro-plating.

Flammability Information

All materials present in the power module meet UL flammability rating class 94V-0

NVVR26A120M1WSB

MODULE CHARACTERISTICS ($T_{vj} = 25^{\circ}\text{C}$, Unless Otherwise Specified)

Symbol	Parameter	Rating	Unit
T_{vj}	Operating Junction Temperature	-40 to 175	$^{\circ}\text{C}$
T_{STG}	Storage Temperature Range	-40 to 125	$^{\circ}\text{C}$
V_{ISO}	Isolation Voltage (AC, 50 Hz, 5 s)	4200	V
L_{SPS}	Stray Inductance	7.1	nH
$R_{DD'+SS'}$	Module Lead Resistance, Terminal to Chip	0.3	$\text{m}\Omega$
G	Module Weight	48	g
CTI	Comparative Tracking Index	>600	-
	Minimum: Terminal to Terminal	6.6	mm
	Minimum (Note 1): Terminal to Isolated Case	3.8	mm
M	M5 DIN 439B Screws for Module Terminals, Max. Torque	2.2	Nm

1. Verified by characterization/design, not by test.

ABSOLUTE MAXIMUM RATINGS ($T_{vj} = 25^{\circ}\text{C}$, Unless Otherwise Specified)

Symbol	Parameter	Rating	Unit
V_{DS}	Drain-Source Voltage	1200	V
V_{GS}	Gate-Source Voltage	+25/-10	V
I_{DS}	Continuous DC Current, $V_{GS} = 20\text{ V}$, $T_{vj} = 175^{\circ}\text{C}$, $T_F = 65^{\circ}\text{C}$ @ 10LPM, using Ref. Heatsink (Note 2)	400	A
$I_{DS,pulsed}$	Pulsed Drain-Source Current, $V_{GS} = 20\text{ V}$, limited by $T_{vj,Max}$	800	A
$I_{SD,BD}$	DC Current in Body Diode, $V_{GS} = -5\text{ V}$, $T_{vj} = 175^{\circ}\text{C}$, $T_F = 65^{\circ}\text{C}$ @ 10LPM, using Ref. Heatsink (Note 2)	270	A
$I_{SD,pulsed}$	Pulsed Body Diode Current, $V_{GS} = -5\text{ V}$, limited by $T_{vj,Max}$	800	A
P_{tot}	Total Power Dissipation $T_{vj,Max} = 175^{\circ}\text{C}$, $T_F = 65^{\circ}\text{C}$, Ref. Heatsink (typ)	1000	W

Stresses exceeding those listed in the Maximum Ratings table may damage the device. If any of these limits are exceeded, device functionality should not be assumed, damage may occur and reliability may be affected.

2. Verified by characterization/design, not by test.

NVVR26A120M1WSB

MOSFET CHARACTERISTICS (T_{vj} = 25°C, Unless Otherwise Specified)

Parameter		Conditions		Min	Typ	Max	Unit
R _{DS(ON)}	Drain-to-Source On Resistance (Terminal)	V _{GS} = 20V, I _D = 400A T _{vj} = 25°C T _{vj} = 175°C		–	2.6 4.6	–	mΩ
V _{GS(TH)}	Gate Threshold Voltage	V _{GS} = V _{DS} , I _D = 150 mA		2.1	3.2	–	V
g _{fs}	Forward Transconductance	V _{DS} = 10 V, I _D = 400 A		–	170	–	S
Q _G	Total Gate Charge	V _{GS} = –5/+20 V, V _{DS} = 800 V, I _D = 400 A		–	1.75	–	μC
R _{g,int}	Internal Gate Resistance			–	2.1	–	Ω
C _{iss}	Input Capacitance	V _{DS} = 800 V, V _{GS} = 0 V, f = 100 kHz		–	31.7	–	nF
C _{oss}	Output Capacitance			–	2.2	–	nF
C _{rss}	Reverse Transfer Capacitance			–	0.22	–	nF
I _{DSS}	Zero Gate Voltage Drain Current	V _{GS} = 0 V, V _{DS} = 1200 V T _{vj} = 25°C T _{vj} = 175°C		–	– 13.1	250 –	μA
I _{GSS}	Gate-Source Leakage Current	V _{GS} = 20/–5 V, V _{DS} = 0 V				±700	nA
T _{d,on}	Turn On Delay, Inductive Load	I _{DS} = 400 A, V _{DS} = 800 V, V _{GS} = +20/–5 V, R _{g,on} = 3 Ω	T _{vj} = 25°C T _{vj} = 175°C	–	125 115	–	ns
T _r	Rise Time, Inductive Load	I _{DS} = 400 A, V _{DS} = 800 V, V _{GS} = +20/–5 V, R _{g,on} = 3Ω	T _{vj} = 25°C T _{vj} = 175°C	–	59 54	–	ns
T _{d,off}	Turn Off Delay, Inductive Load	I _{DS} = 400 A, V _{DS} = 800 V, V _{GS} = +20/–5 V, R _{g,off} = 1 Ω	T _{vj} = 25°C, T _{vj} = 175°C	–	220 228	–	ns
T _f	Fall Time, Inductive Load	I _{DS} = 400 A, V _{DS} = 800 V, V _{GS} = +20/–5 V, R _{g,off} = 1 Ω	T _{vj} = 25°C T _{vj} = 175°C	–	51 61	–	ns
E _{ON}	Turn-On Switching Loss (including diode reverse recovery loss)	I _{DS} = 400 A, V _{DS} = 800 V, V _{GS} = +20/–5 V, L _s = 17 nH, R _{g,on} = 3Ω	di/dt = 8.4 A/ns, T _{vj} = 25°C di/dt = 9.7 A/ns, T _{vj} = 175°C	–	26 28	–	mJ
E _{OFF}	Turn-Off Switching Loss	I _{DS} = 400A, V _{DS} = 800 V, V _{GS} = +20/–5 V, L _s = 17 nH, R _{g,off} = 1 Ω	dv/dt = 19.8 V/ns, T _{vj} = 25°C dv/dt = 16.8 V/ns, T _{vj} = 175°C	–	14 17	–	mJ
E _{sc}	Short Circuit Energy Withstand	V _{GS} = 20 V, V _{DS} = 800 V T _{vj} = 25°C T _{vj} = 175°C		–	12 11	–	J

NVVR26A120M1WSB

BODY DIODE CHARACTERISTICS (T_{vj} = 25°C, Unless Otherwise Specified)

Parameters		Conditions		Min	Typ	Max	Unit
V _{SD}	Diode Forward Voltage (Terminal)	V _{GS} = -5 V, I _{SD} = 400 A T _{vj} = 25°C T _{vj} = 175°C		–	3.8 3.3	–	V
E _{rr}	Reverse Recovery Energy	I _{SD} = 400 A, V _R = 800 V, V _{GS} = -5 V, L _s = 17 nH, R _{g,on} = 3 Ω	di/dt = 8.4 A/ns, T _{vj} = 25°C di/dt = 9.7 A/ns, T _{vj} = 175°C	–	0.4 2.1	–	mJ
Q _{RR}	Recovered Charge	I _{SD} = 400 A, V _R = 800 V, V _{GS} = -5 V, R _{g,on} = 3 Ω	T _{vj} = 25°C T _{vj} = 175°C	–	2.3 8.6	–	μC
I _{RR}	Peak Reverse Recovery Current	I _{SD} = 400 A, V _R = 800 V, V _{GS} = -5 V, R _{g,on} = 3 Ω	T _{vj} = 25°C T _{vj} = 175°C	–	527 650	–	A

NTC SENSOR CHARACTERISTICS (T_{vj} = 25°C, Unless Otherwise Specified)

Parameters		Conditions	Min	Typ	Max	Unit
R25	Rated Resistance	T _c = 25°C	–	10	–	kΩ
ΔR/R	Deviation of R100	T _c = 100°C, R100 = 877 Ω	–3	–	+3	%
P25	Power Dissipation	T _c = 25°C	–	–	125	mW
B25/85	B-Value	R = R25 exp [B25/85 (1/T – 1/298)]	–1%	3610	+1%	K

THERMAL CHARACTERISTICS

Symbol	Parameter	Test Conditions	Min	Typ	Max	Unit
R _{th,J-C}	FET Junction to Case		–	0.025	0.028	°C/W
R _{th,J-F}	FET Junction to Fluid	R _{th} , Junction to Fluid, 10 L/min, 65°C, 50/50 EGW, Ref. Heatsink	–	0.11	–	°C/W

TYPICAL CHARACTERISTICS

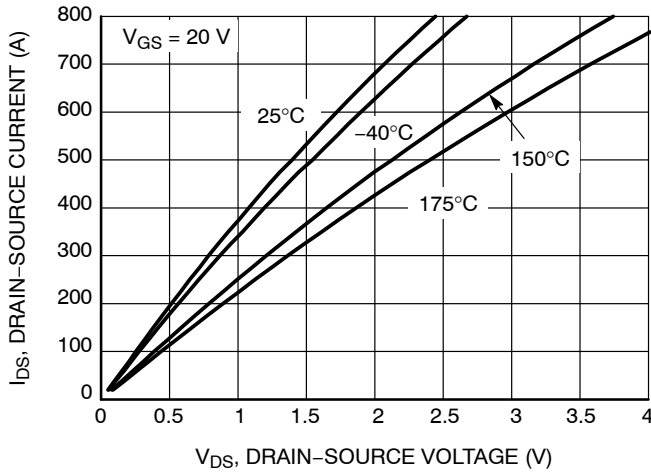


Figure 2. Output Characteristics

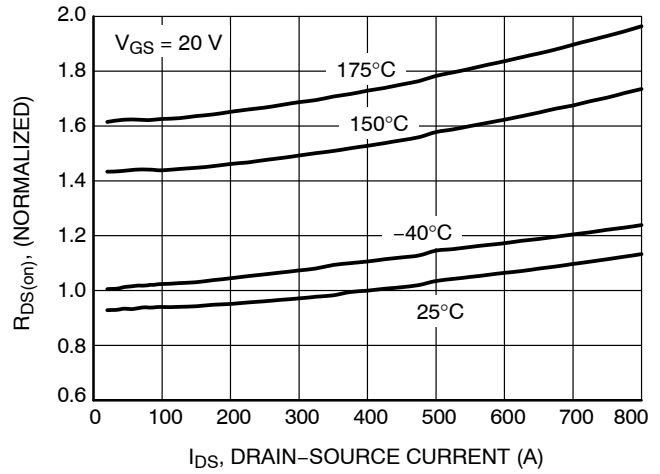


Figure 3. Normalized On-state Resistance vs. Drain Current

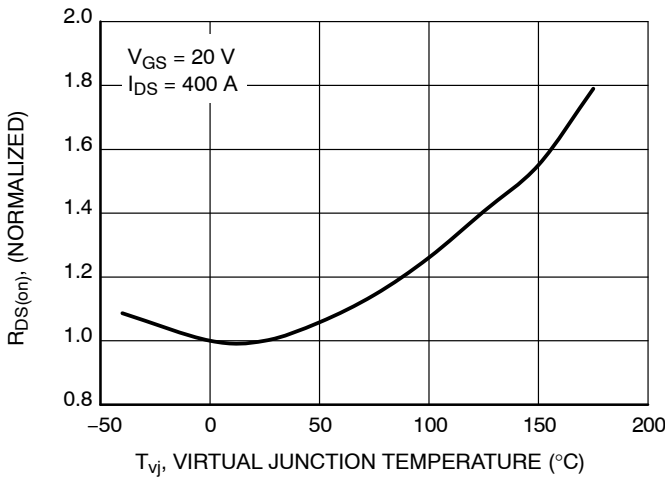


Figure 4. Normalized On-state Resistance vs. Temperature

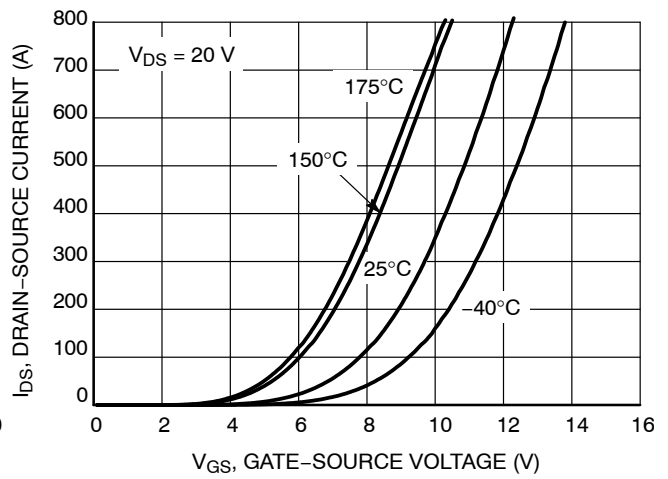


Figure 5. Transfer Characteristic

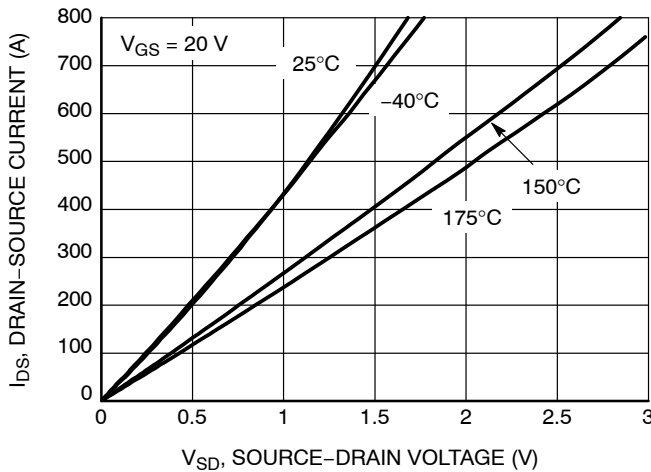


Figure 6. 3rd Quadrant Characteristic at $V_{GS} = 20\text{ V}$

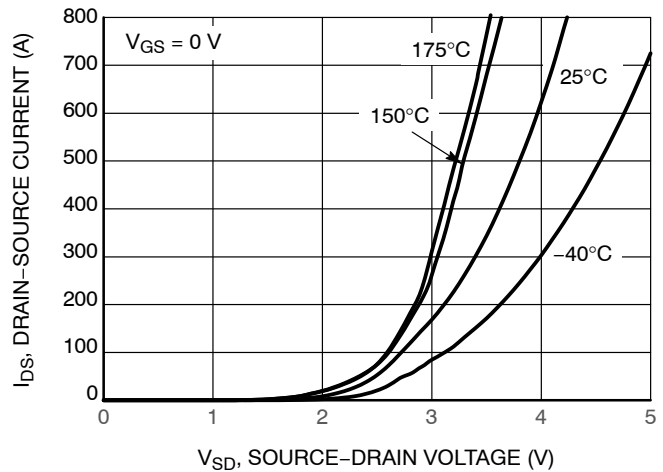


Figure 7. 3rd Quadrant Characteristic at $V_{GS} = 0\text{ V}$

TYPICAL CHARACTERISTICS

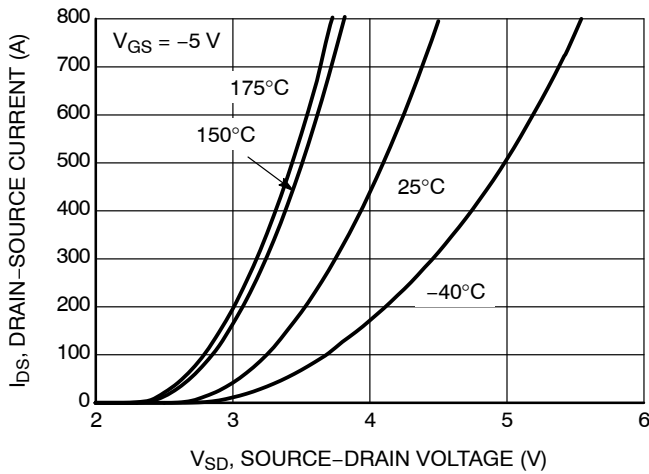


Figure 8. 3rd Quadrant Characteristic at $V_{GS} = -5\text{ V}$

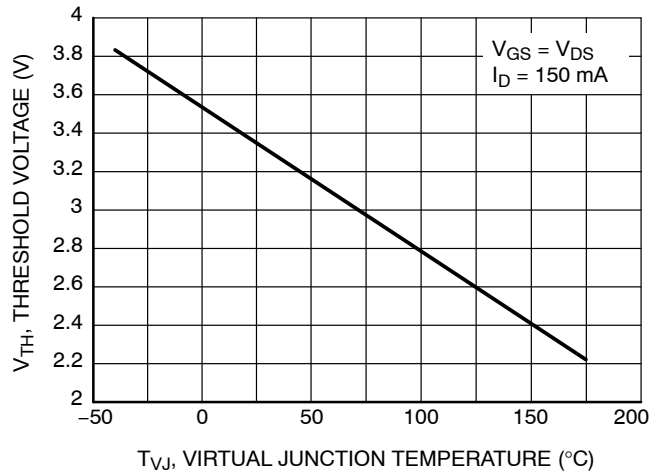


Figure 9. Gate Threshold Voltage vs. Temperature

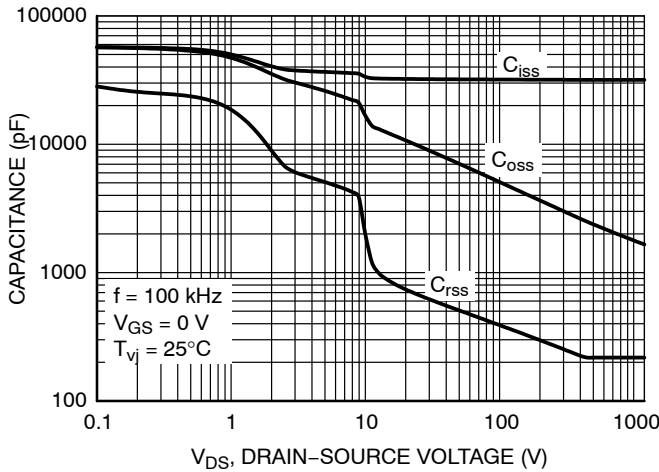


Figure 10. Typical Capacitance vs. Drain-Source Voltage

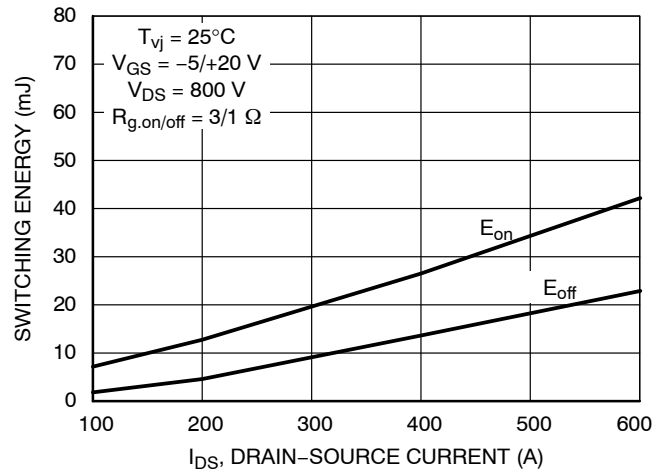


Figure 11. Switching Energies at 25 °C

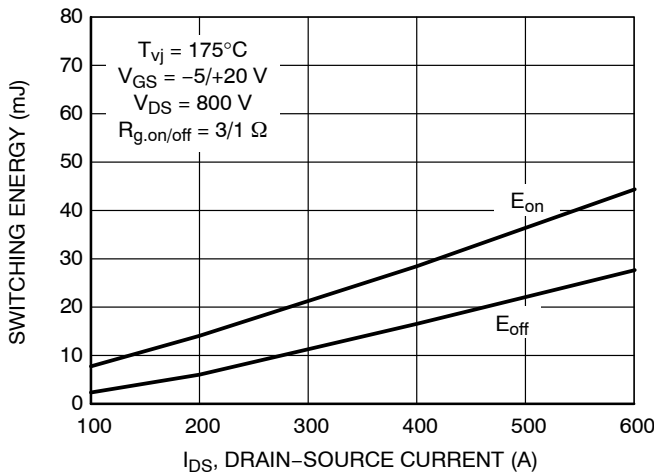


Figure 12. Switching Energies at 175 °C

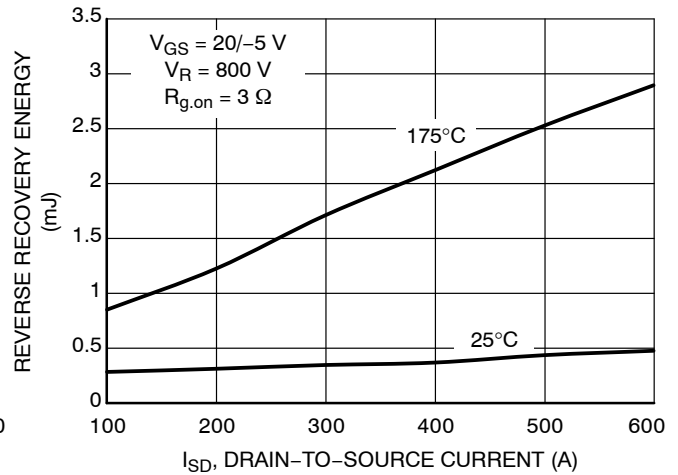


Figure 13. Reverse Recovery Energy vs. Drain-Source Current

TYPICAL CHARACTERISTICS

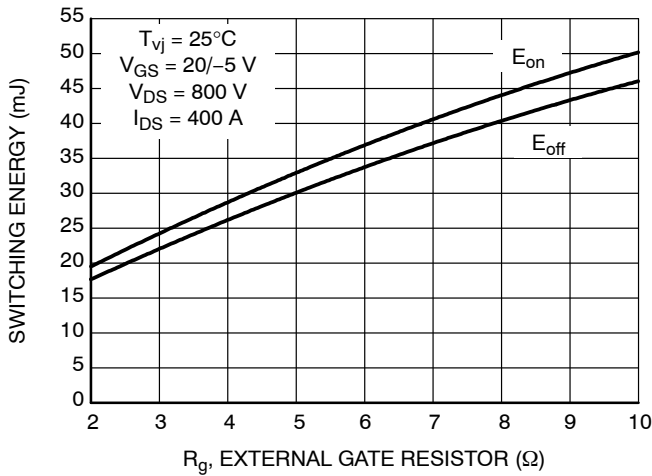


Figure 14. Switching Energies vs. External Gate Resistor

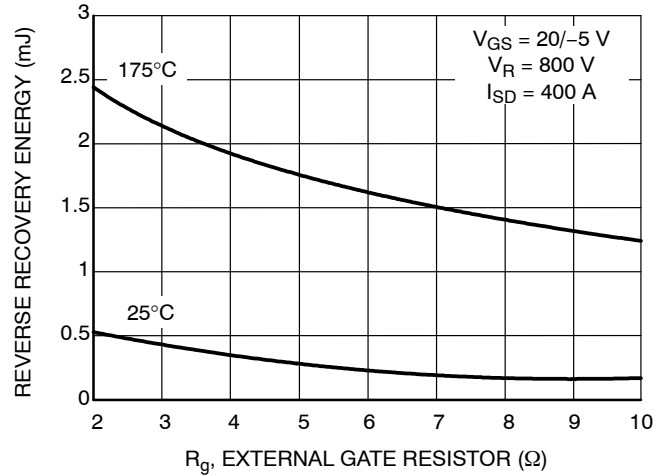


Figure 15. Reverse Recovery Energy vs. External Gate Resistor

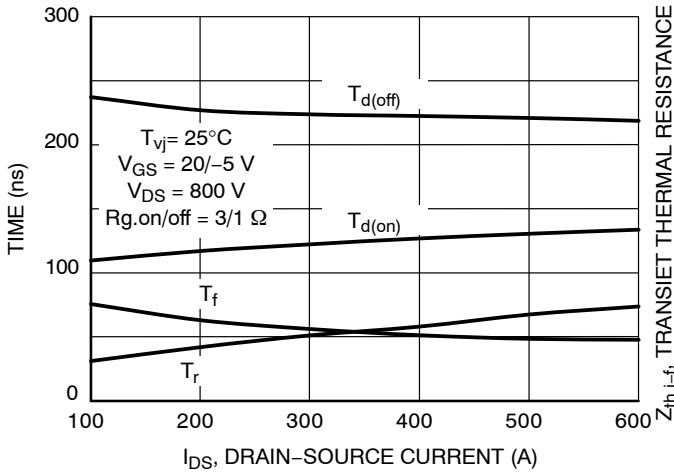


Figure 16. Timing Characteristics vs. Drain-Source Current

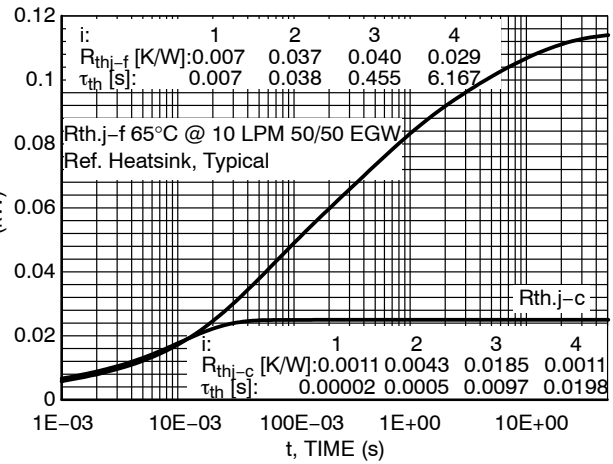


Figure 17. Typical Thermal Impedance

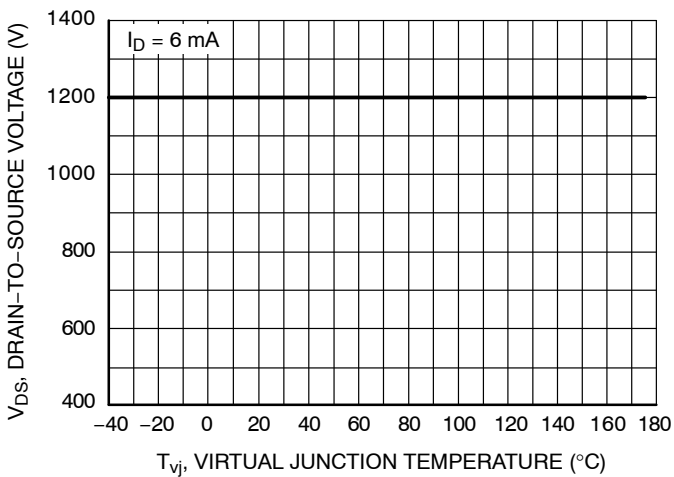


Figure 18. MOSFET Breakdown Voltage vs. T_{vj}

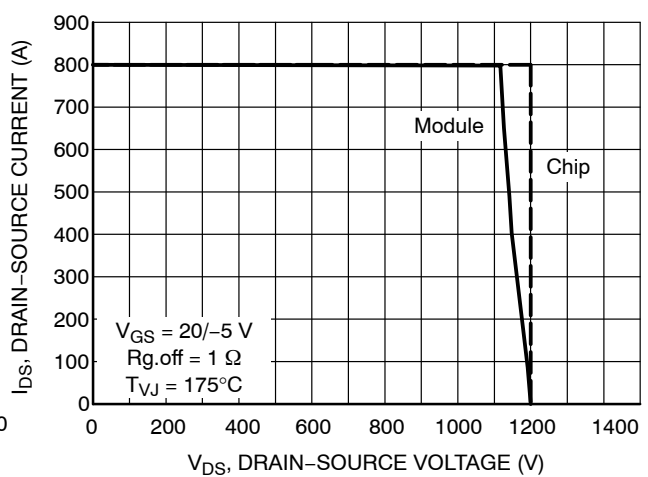


Figure 19. MOSFET RBSOA of Chip and Module

NVVR26A120M1WSB

TYPICAL CHARACTERISTICS

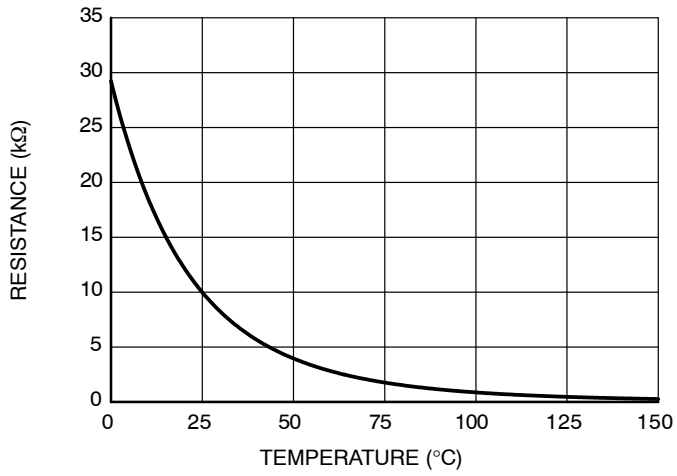


Figure 20. NTC Resistance vs. Temperature

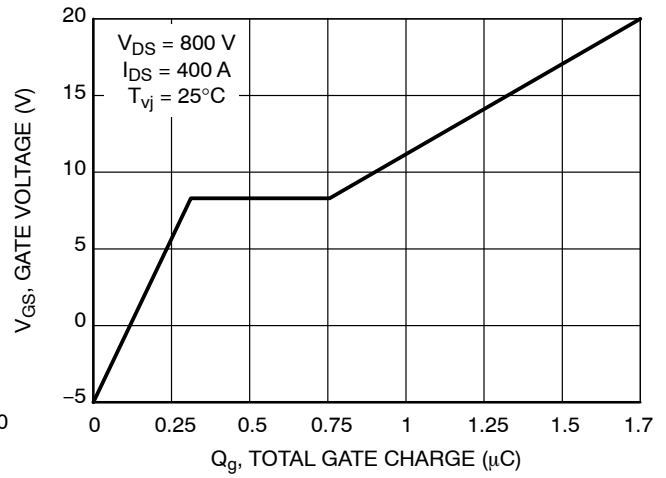
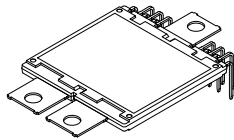


Figure 21. Gate Charge vs. Gate-Source

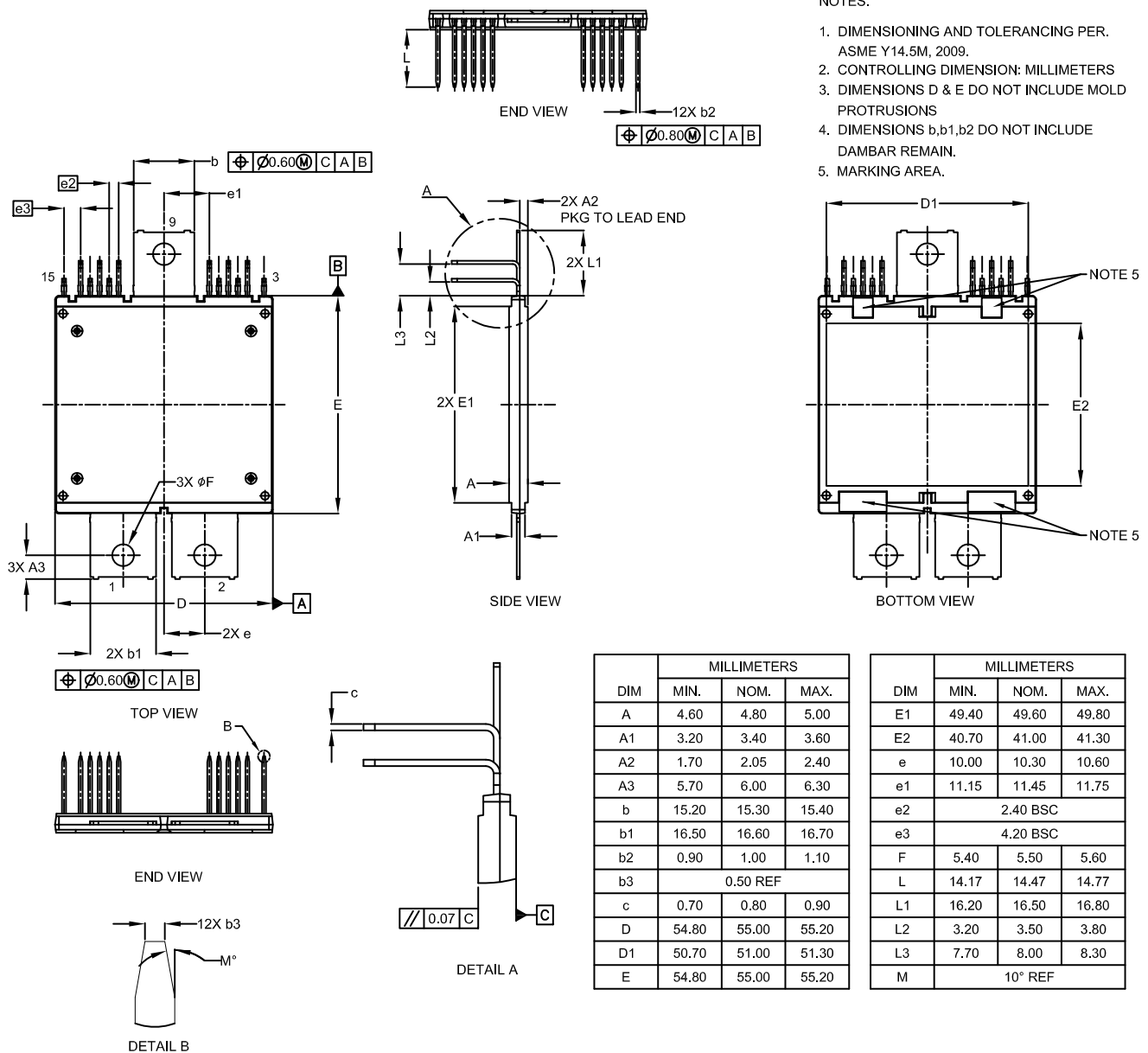
MECHANICAL CASE OUTLINE PACKAGE DIMENSIONS

ON Semiconductor®



AHPM15-CDE AUTOMOTIVE MODULE CASE MODHT ISSUE O

DATE 23 APR 2021



DOCUMENT NUMBER: 98AON33310H

Electronic versions are uncontrolled except when accessed directly from the Document Repository.
Printed versions are uncontrolled except when stamped "CONTROLLED COPY" in red.

DESCRIPTION: AHPM15-CDE AUTOMOTIVE MODULE

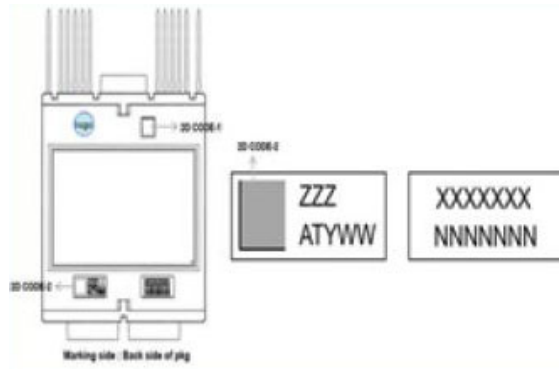
PAGE 1 OF 2

ON Semiconductor and are trademarks of Semiconductor Components Industries, LLC dba ON Semiconductor or its subsidiaries in the United States and/or other countries. ON Semiconductor reserves the right to make changes without further notice to any products herein. ON Semiconductor makes no warranty, representation or guarantee regarding the suitability of its products for any particular purpose, nor does ON Semiconductor assume any liability arising out of the application or use of any product or circuit, and specifically disclaims any and all liability, including without limitation special, consequential or incidental damages. ON Semiconductor does not convey any license under its patent rights nor the rights of others.

AHPM15-CDE AUTOMOTIVE MODULE
CASE MODHT
ISSUE O

DATE 23 APR 2021


**GENERIC
MARKING DIAGRAM***



ZZZ = Assembly Lot Code
AT = Assembly & Test Location
Y = Year
WW = Work Week
XXXX = Specific Device Code
NNNN = Serial Number

*This information is generic. Please refer to device data sheet for actual part marking. Pb-Free indicator, "G" or microdot "•", may or may not be present. Some products may not follow the Generic Marking.

DOCUMENT NUMBER:	98AON33310H	Electronic versions are uncontrolled except when accessed directly from the Document Repository. Printed versions are uncontrolled except when stamped "CONTROLLED COPY" in red.
DESCRIPTION:	AHPM15-CDE AUTOMOTIVE MODULE	PAGE 2 OF 2

ON Semiconductor and  are trademarks of Semiconductor Components Industries, LLC dba ON Semiconductor or its subsidiaries in the United States and/or other countries. ON Semiconductor reserves the right to make changes without further notice to any products herein. ON Semiconductor makes no warranty, representation or guarantee regarding the suitability of its products for any particular purpose, nor does ON Semiconductor assume any liability arising out of the application or use of any product or circuit, and specifically disclaims any and all liability, including without limitation special, consequential or incidental damages. ON Semiconductor does not convey any license under its patent rights nor the rights of others.

onsemi, **Onsemi**, and other names, marks, and brands are registered and/or common law trademarks of Semiconductor Components Industries, LLC dba "**onsemi**" or its affiliates and/or subsidiaries in the United States and/or other countries. **onsemi** owns the rights to a number of patents, trademarks, copyrights, trade secrets, and other intellectual property. A listing of **onsemi**'s product/patent coverage may be accessed at www.onsemi.com/site/pdf/Patent-Marking.pdf. **onsemi** reserves the right to make changes at any time to any products or information herein, without notice. The information herein is provided "as-is" and **onsemi** makes no warranty, representation or guarantee regarding the accuracy of the information, product features, availability, functionality, or suitability of its products for any particular purpose, nor does **onsemi** assume any liability arising out of the application or use of any product or circuit, and specifically disclaims any and all liability, including without limitation special, consequential or incidental damages. Buyer is responsible for its products and applications using **onsemi** products, including compliance with all laws, regulations and safety requirements or standards, regardless of any support or applications information provided by **onsemi**. "Typical" parameters which may be provided in **onsemi** data sheets and/or specifications can and do vary in different applications and actual performance may vary over time. All operating parameters, including "Typicals" must be validated for each customer application by customer's technical experts. **onsemi** does not convey any license under any of its intellectual property rights nor the rights of others. **onsemi** products are not designed, intended, or authorized for use as a critical component in life support systems or any FDA Class 3 medical devices or medical devices with a same or similar classification in a foreign jurisdiction or any devices intended for implantation in the human body. Should Buyer purchase or use **onsemi** products for any such unintended or unauthorized application, Buyer shall indemnify and hold **onsemi** and its officers, employees, subsidiaries, affiliates, and distributors harmless against all claims, costs, damages, and expenses, and reasonable attorney fees arising out of, directly or indirectly, any claim of personal injury or death associated with such unintended or unauthorized use, even if such claim alleges that **onsemi** was negligent regarding the design or manufacture of the part. **onsemi** is an Equal Opportunity/Affirmative Action Employer. This literature is subject to all applicable copyright laws and is not for resale in any manner.

ADDITIONAL INFORMATION

TECHNICAL PUBLICATIONS:

Technical Library: www.onsemi.com/design/resources/technical-documentation
onsemi Website: www.onsemi.com

ONLINE SUPPORT: www.onsemi.com/support

For additional information, please contact your local Sales Representative at
www.onsemi.com/support/sales

Mouser Electronics

Authorized Distributor

Click to View Pricing, Inventory, Delivery & Lifecycle Information:

[onsemi:](#)

[NVVR26A120M1WSB](#)