

# UM12117

RD-BESS1500BUN user manual

Rev. 1 — 1 July 2024

User manual

## Document information

Information	Content
Keywords	high-voltage battery management system, HVBMS, battery management unit, BMU, cell measurement unit, CMU, battery junction box, BJB, battery energy storage system, BESS, transistor-transistor logic, TTL, controller area network flexible data rate, CAN FD, electrical transport protocol link, ETPL, Joint Test Access Group, JTAG, graphical user interface, GUI, recommended standard 485, RS-485
Abstract	This document aims to help getting started with the BESS1500BUN HVBMS hardware reference design.



## 1 Important notice

### IMPORTANT NOTICE

#### For engineering development or evaluation purposes only



NXP provides the product under the following conditions:

This evaluation kit or reference design is for use of **ENGINEERING DEVELOPMENT OR EVALUATION PURPOSES ONLY**.

It is provided as a sample IC pre-soldered to a printed circuit board to make it easier to access inputs, outputs, and supply terminals. This evaluation kit or reference design may be used with any development system or other source of I/O signals by connecting it to the host MCU or computer board via off-the-shelf cables. Final device in an application will be heavily dependent on proper printed circuit board layout and heat sinking design as well as attention to supply filtering, transient suppression, and I/O signal quality.

The product provided may not be complete in terms of required design, marketing, and or manufacturing related protective considerations, including product safety measures typically found in the end device incorporating the product. Due to the open construction of the product, it is the responsibility of the user to take all appropriate precautions for electric discharge. To minimize risks associated with the customers' applications, adequate design and operating safeguards must be provided by the customer to minimize inherent or procedural hazards. For any safety concerns, contact NXP sales and technical support services.

## 2 Introduction

The RD-BESS1500BUN is an electrical transport protocol link (ETPL) based battery energy storage system (BESS) reference design bundle for 1500 V applications. This bundle has been designed for evaluation and development purposes. The RD-BESS1500BUN is composed of a hardware kit and several software packages.

This document details the first startup steps to visualize the measurements performed by the system in a graphical user interface (GUI).

### 3 Kit content

---

The RD-BESS1500BUN bundle contains the following items:

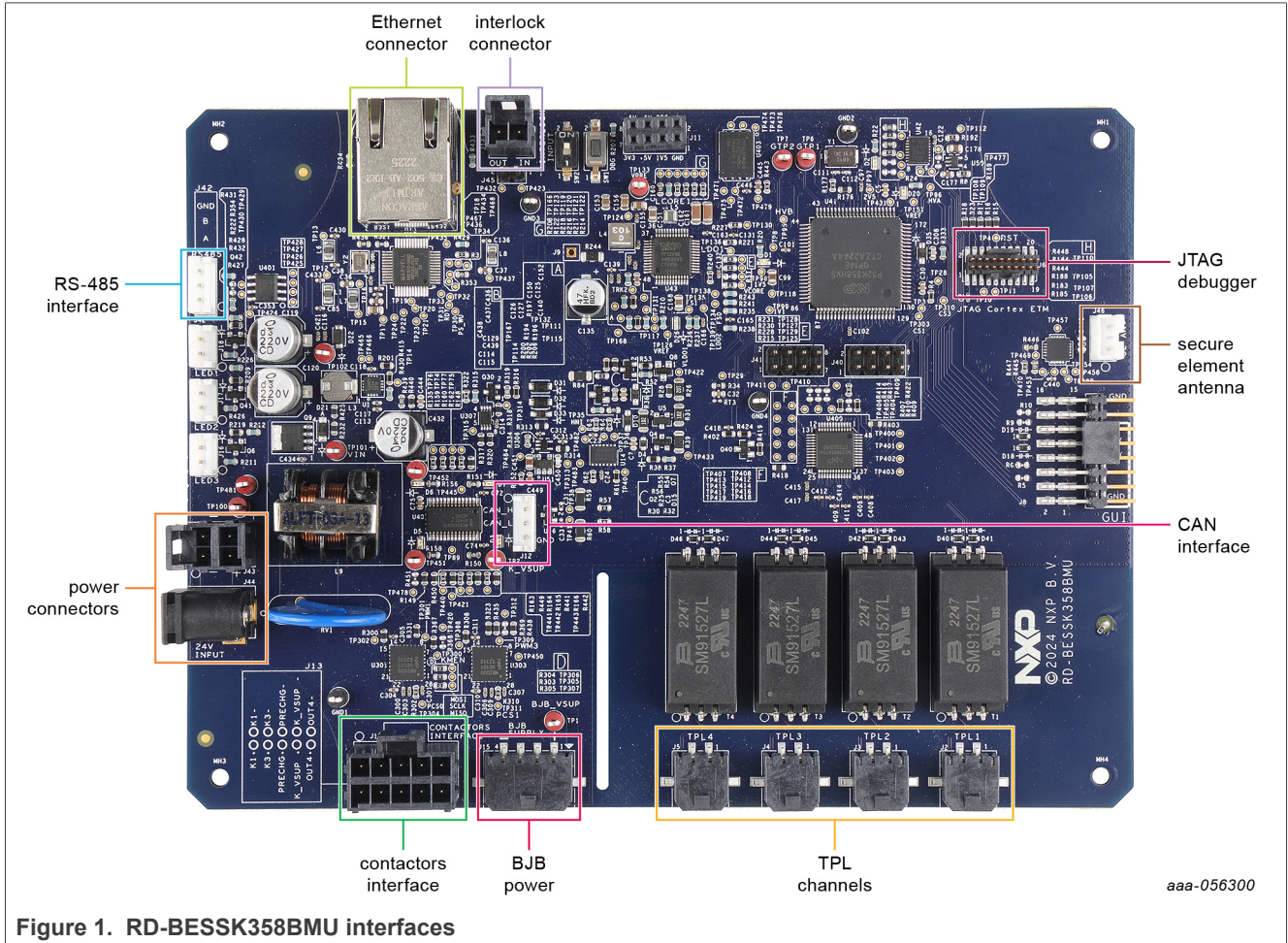
- Battery management unit (BMU)
  - 1 RD-BESSK358BMU board
  - 1 power supply (24 V DC, 3.75 A)
  - 1 power cord
  - 1 ETPL cable
  - 1 RS-485 cable
  - 1 Ethernet cable
  - 1 controller area network (CAN) cable
  - 1 interlock cable
  - 1 contactors cable
  - 1 secure element antenna
  - 1 USB to RS-485 converter
- Cell monitoring unit (CMU)
  - 1 RDBESS774A3EVB board
  - 3 supply cables
  - 1 ETPL cable
- Battery junction box (BJB)
  - 1 RDBESS772BJBEVB board
  - 1 power cord
  - 6 high-voltage measurement cables
  - 2 thermal sensor cables
  - 1 chassis cable
  - 1 GND cable
  - 2 Hall sensor cables
  - 1 ETPL cable
  - 1 plexiglass cover
- Battery emulation kit
  - 1 BATT-18EMULATOR board
  - 1 power supply (5 V DC, 5 A)
- Links to the software and safety kits

**Note:** A BESS startup interface is available on the RD-BESS1500BUN website to visualize cell voltage measurements at first startup. This interface is a GUI matching with a binary file that is preflashed on the BMU.

## 4 Getting to know the hardware

### 4.1 Battery management unit

The BMU is the control part of the BESS. The BMU processes the data, decides, and commands the system. The RD-BESSK358BMU is the BESS reference design BMU for 1500 V applications. This BMU kit includes a power supply and five cables to interface with other parts of the BESS.



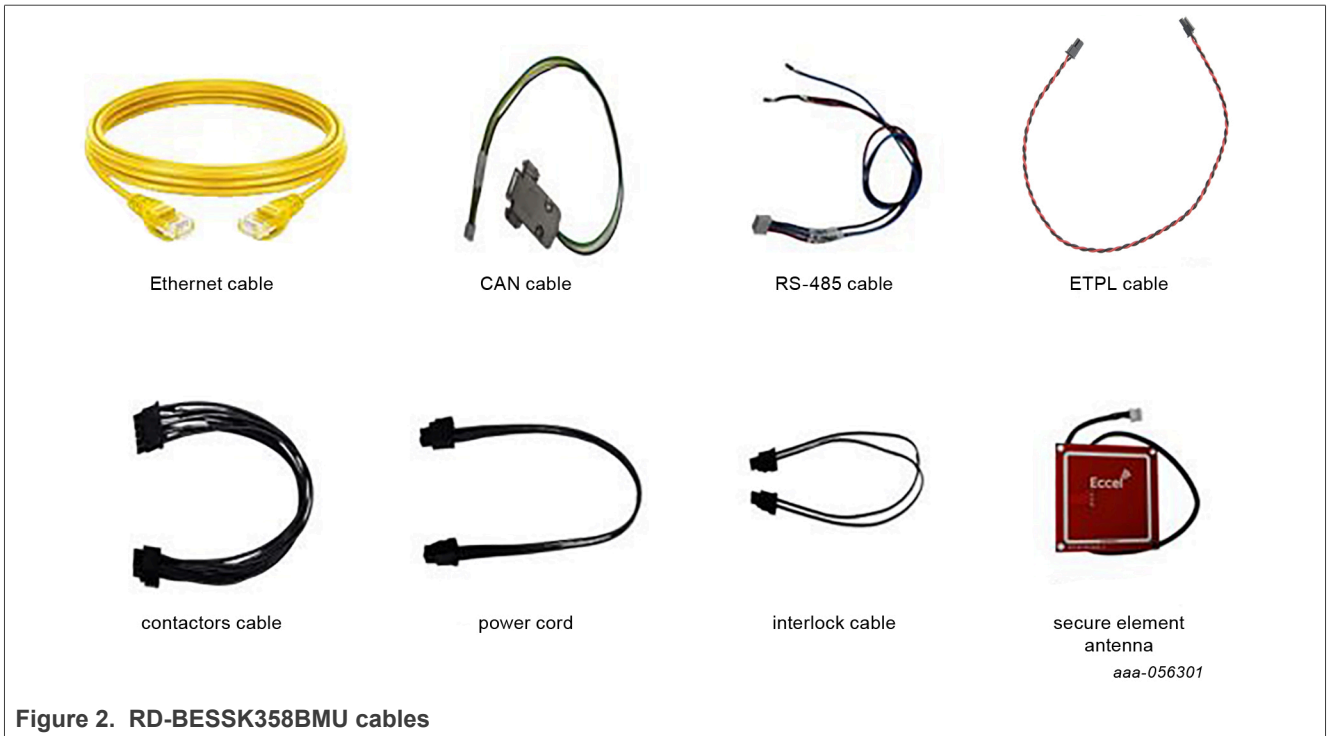


Figure 2. RD-BESSK358BMU cables

To learn more about the RD-BESSK358BMU, visit the website associated with this reference design, or read its [user manual](#).

## 4.2 Cell monitoring unit

The CMU is the cell-sensing part of the battery management system (BMS). The CMU precisely monitors cell voltages and environmental temperatures to ensure safe battery operation. The CMU also enables fast cell-balancing.

The RDBESS774A3EVB is the BESS reference design CMU for ETPL-based architectures based on the MC33774A battery cell controller. This CMU kit includes four cables to interface with other parts of the BESS.

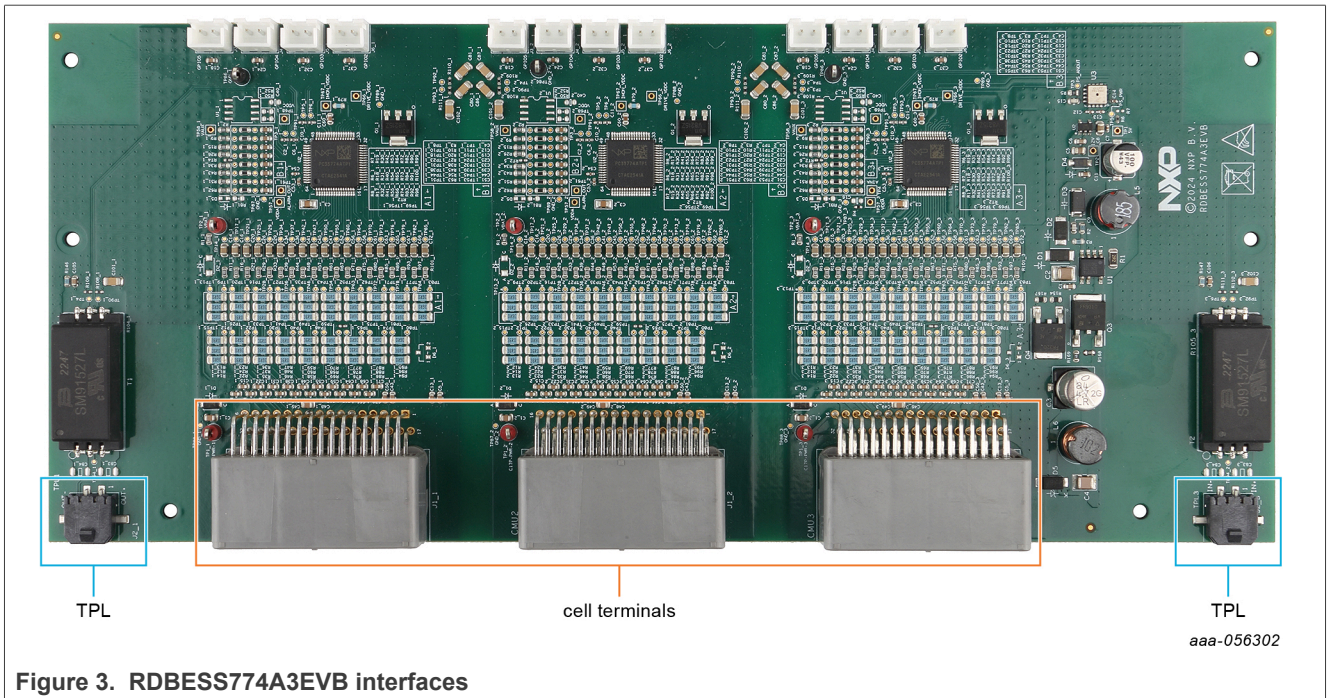


Figure 3. RDBESS774A3EVB interfaces

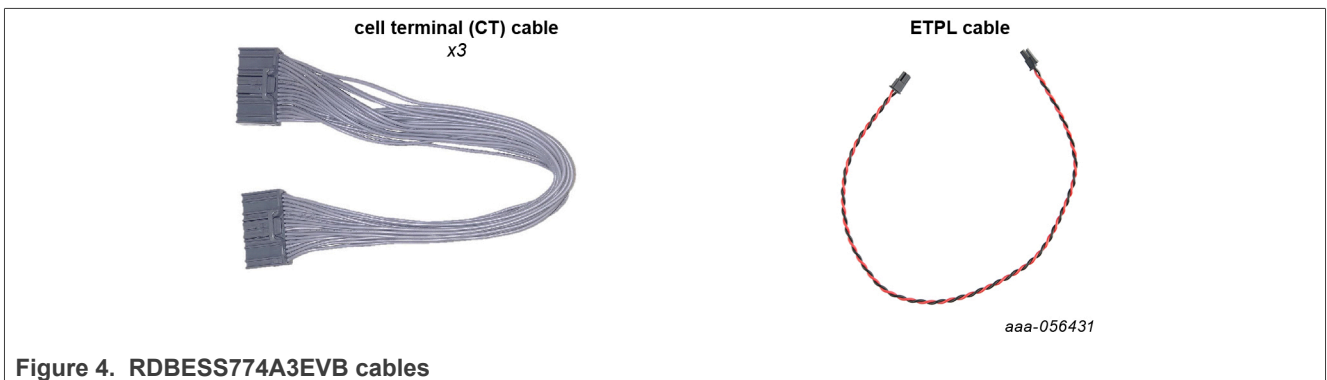


Figure 4. RDBESS774A3EVB cables

To learn more about the RDBESS774A3EVB, visit the website associated with this reference design, or read its [user manual](#).

### 4.3 Battery junction box

The BJB is the pack-level sensing part of the BESS. The BJB measures high voltages. This measurement allows monitoring the connections of the contactors to the inverter and the charger. The BJB also precisely measures the system current and monitors the battery to chassis isolation.

The RDBESS772BJBEVB is the 1500 V BESS reference design BJB for ETPL-based architectures. This BJB kit includes 11 cables to interface with other parts of the BESS.

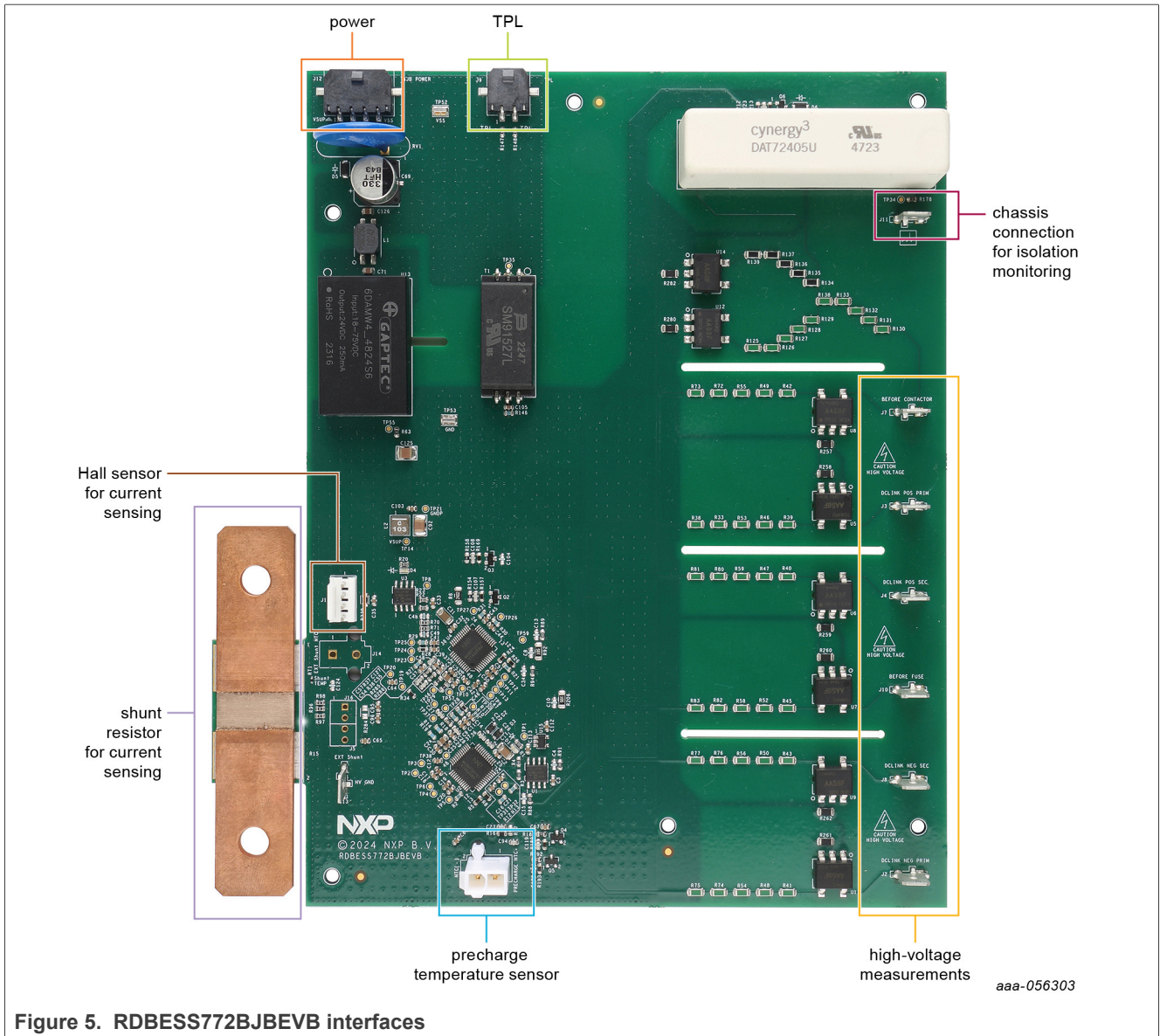


Figure 5. RDBESS772BJBEVB interfaces

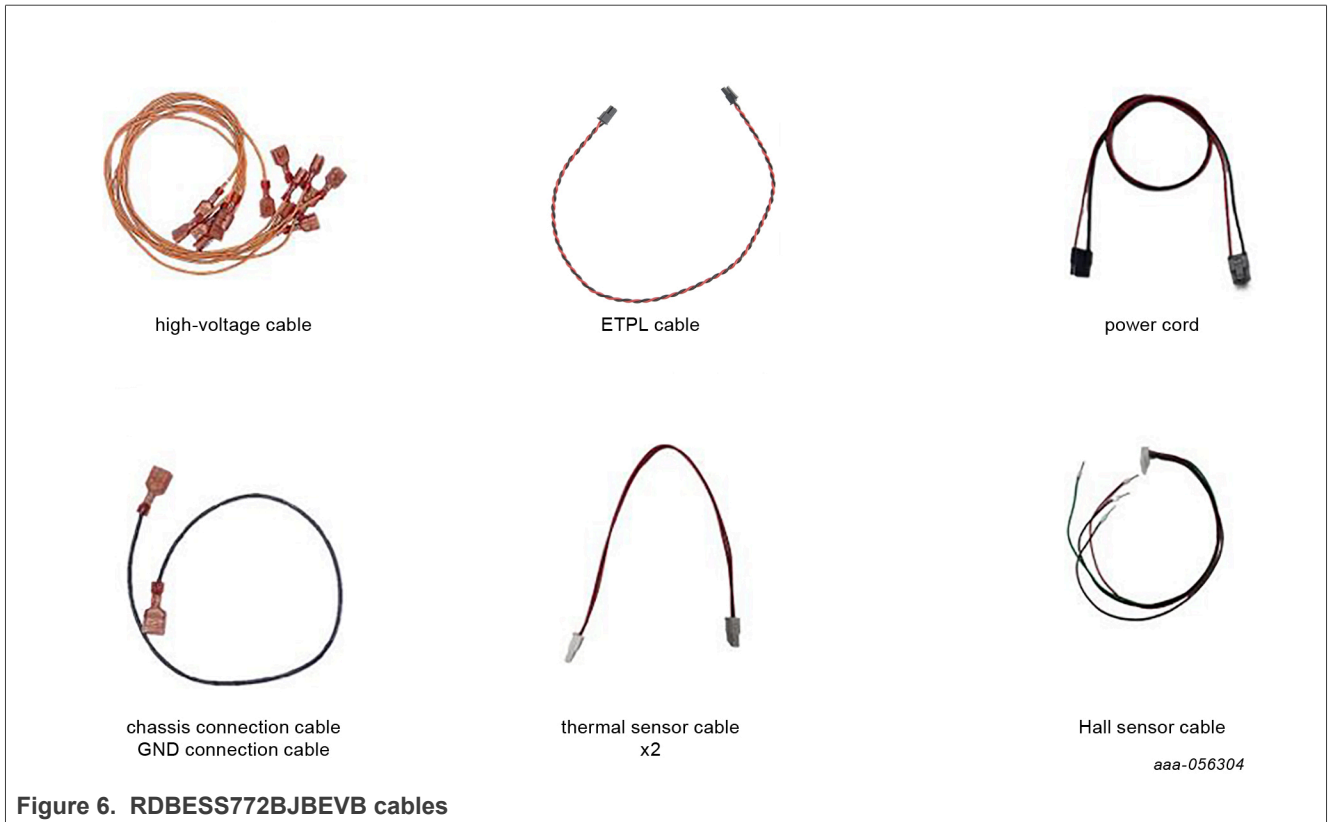


Figure 6. RDBESS772BJBEVB cables

To learn more about the RDBESS772BJBEVB, visit the website associated with this reference design, or read its [user manual](#).

### 4.4 Battery emulation

To emulate cell voltages and temperatures, the RD-BESS1500BUN contains a [BATT-18EMULATOR](#) battery emulator.

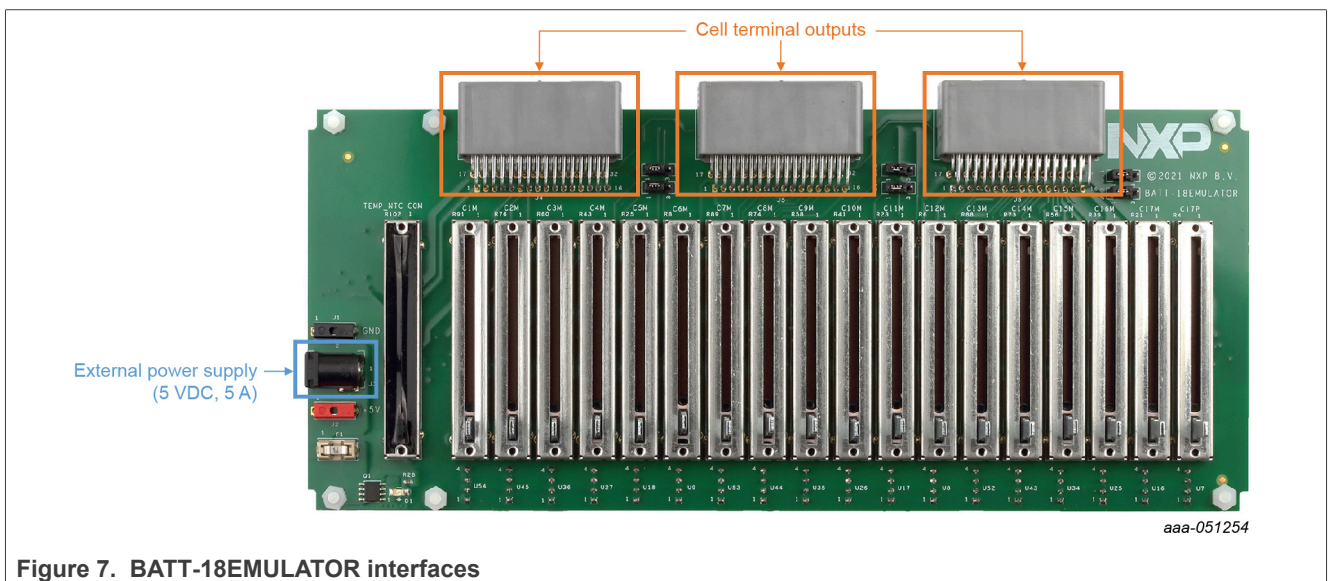


Figure 7. BATT-18EMULATOR interfaces



### 4.5 Polycarbonate structure

To mount the bundle boards, the RD-BESS1500BUN contains an optional polycarbonate structure.

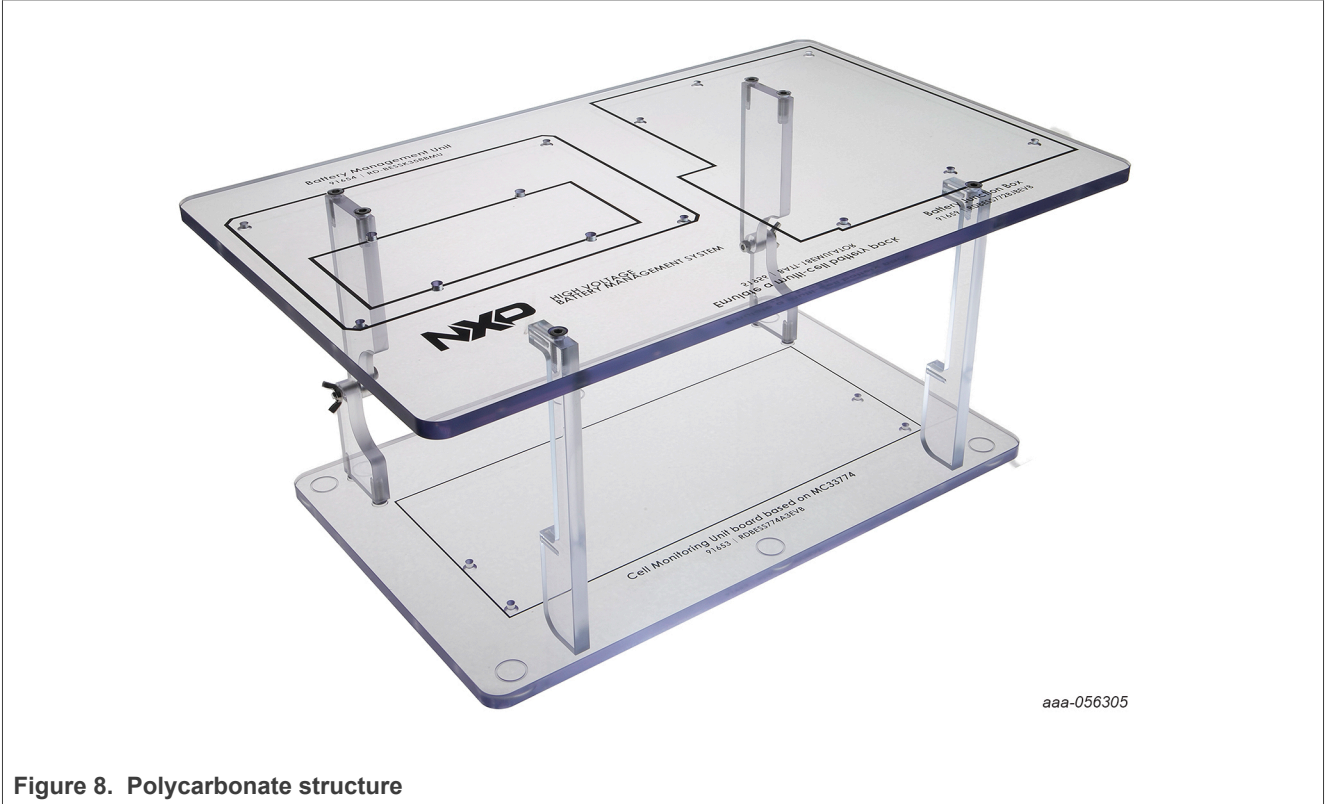


Figure 8. Polycarbonate structure

## 5 First startup

### 5.1 Hardware requirements

In addition to the kit contents, the following hardware is beneficial when working with this kit.

- A PC, to run the provided GUI and program the RD-BESSK358BMU board.
- A Joint Test Access Group (JTAG) debugger to program the RD-BESSK358BMU board. The recommended debugger is [PEmicro multilink FX](#).

### 5.2 Software requirements

In addition to the kit contents, the following software is beneficial when working with this kit.

- BMS monitor GUI V1.0 for measurement visualization and actuators control

### 5.3 Powering and connecting the system

To connect and power up the system, complete the following steps.

5.3.1 Connections of the boards

- Unpack all boards and cables from the kit
- Connect the power cord to the RD-BESSK358BMU (J44)
- Connect the Ethernet cable to the RD-BESSK358BMU (J1)
- Connect the controller area network flexible data rate (CAN FD) cable to the RD-BESSK358BMU (J12)
- Connect the contactor cable to the RD-BESSK358BMU (J13)
- Connect the interlock cable to the RD-BESSK358BMU (J14)
- Connect the CMU
  - Connect the first ETPL cable to the RD-BESSK358BMU (J2) and the RDBESS774A3EVB (J2\_1)
  - Connect the second ETPL cable to the RD-BESSK358BMU (J3) and the RDBESS774A3EVB (J2\_3)
  - Connect the three supply cables to the RDBESS774A3EVB (J1\_1, J1\_2, and J1\_3) and the BATT-18EMULATOR (J4, J5, and J6)
- Connect the BJB
  - Connect the ETPL cable between the RD-BESSK358BMU (J4) and the RDBESS772BJBEVB (J9)
  - Connect the BJB supply cable between the RD-BESSK358BMU (J15) and the RDBESS772BJBEVB (J12)

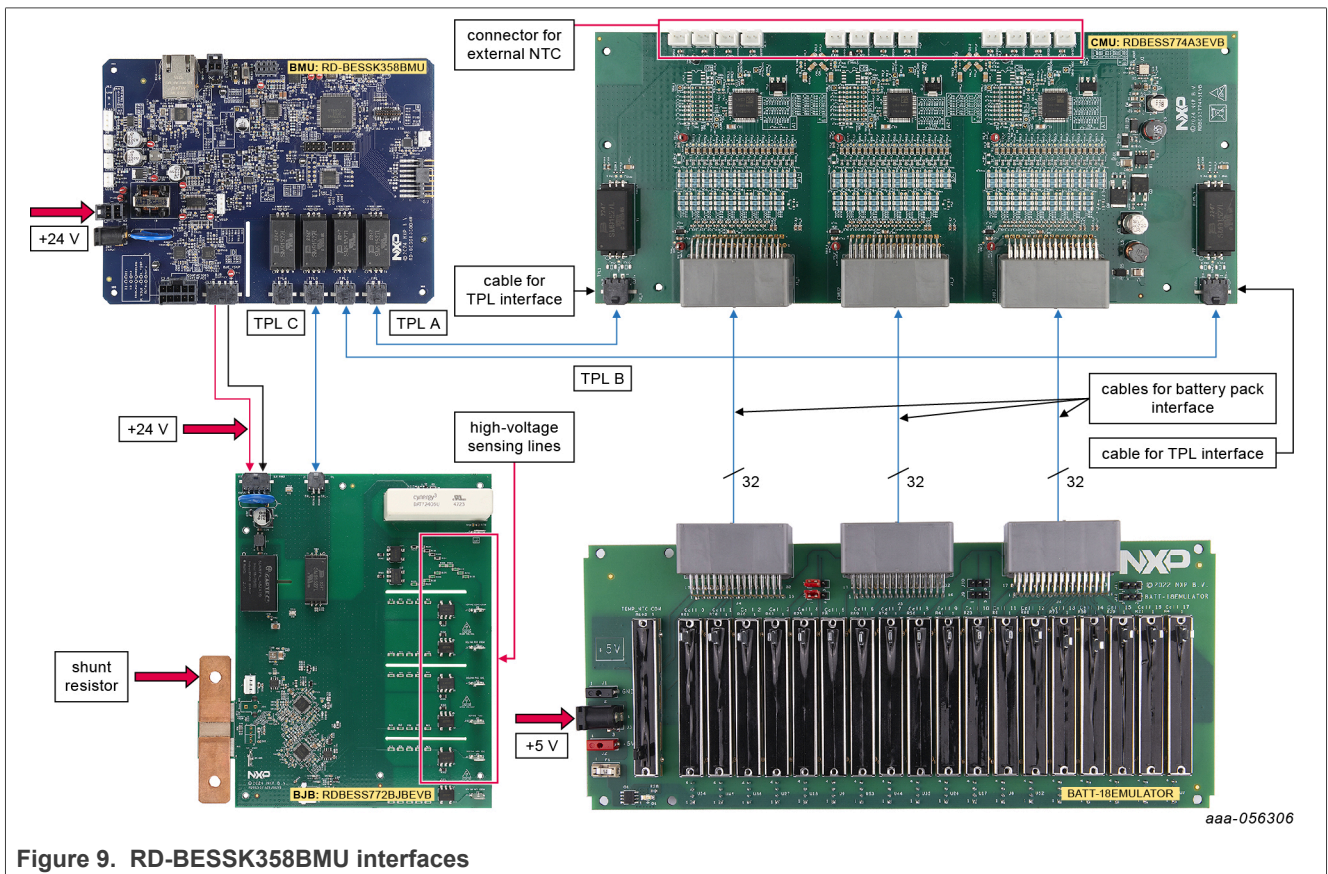


Figure 9. RD-BESSK358BMU interfaces

5.3.2 Powering the boards

- Power the CMU by powering the BATT-18EMULATOR using the provided power supply (J3)
- Power the BMU by connecting the provided power supply to the power connector (J44)

### 5.3.3 Monitoring the system using the BMS monitor GUI V1.0

- Open the BMS monitor GUI V1.0 (BMS\_Monitor.exe)
- Connect an Ethernet cable from the PC to the RD-BESSK358BMU (J1)
- Configure the PC with a static IP
  - Using the Windows search bar, search for view network connections
  - Click and open view network connections
  - Select the Ethernet connection and open its properties. Again, for the Ethernet status window click properties

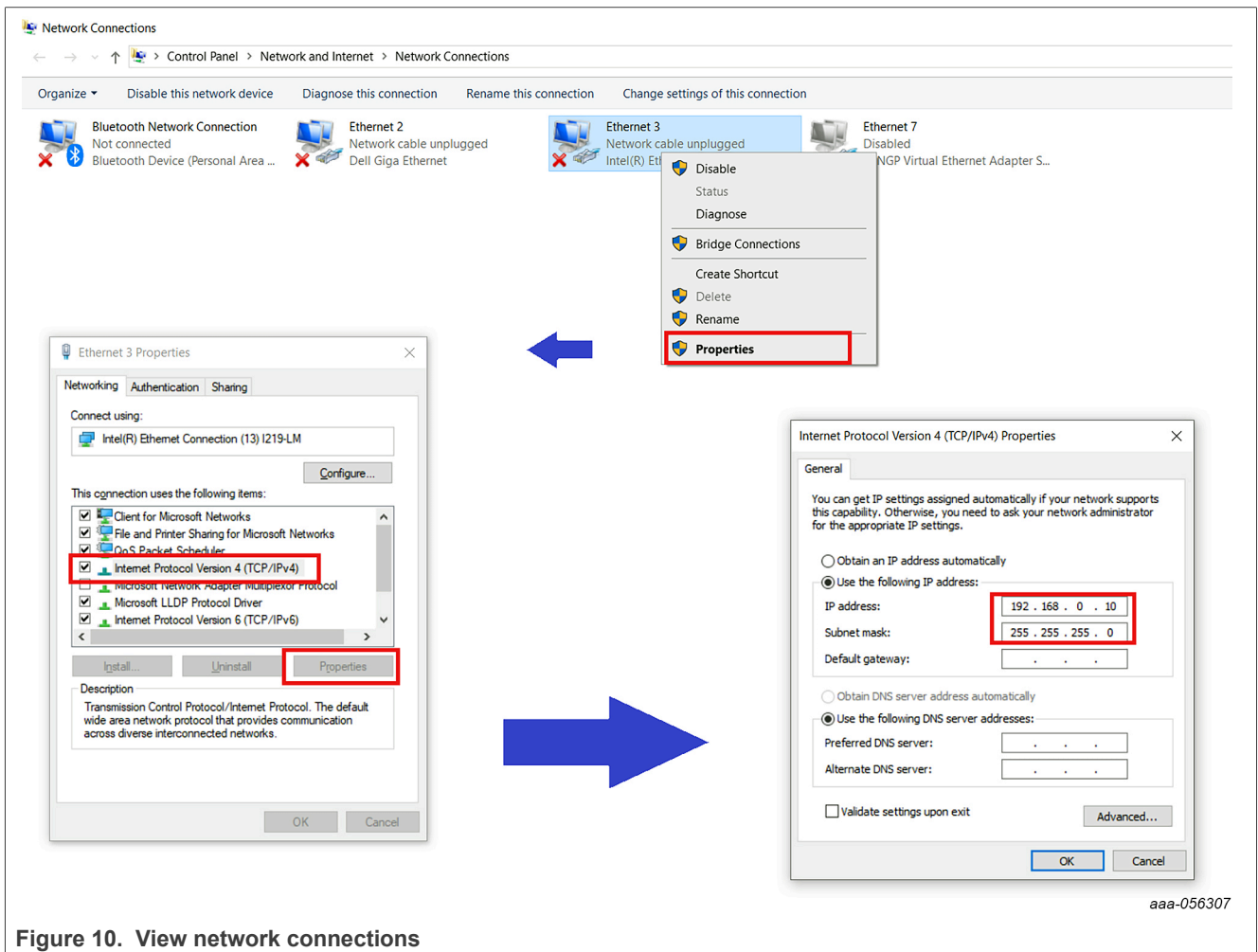


Figure 10. View network connections

For the Ethernet properties window, select Internet protocol version 4 (TCP/IPv4), then double click on it, or click properties.

Follow [Figure 11](#), the IP address can range from 192.168.0.1 to 192.168.0.255, except for 192.168.0.200, which is the IP of the BMU.

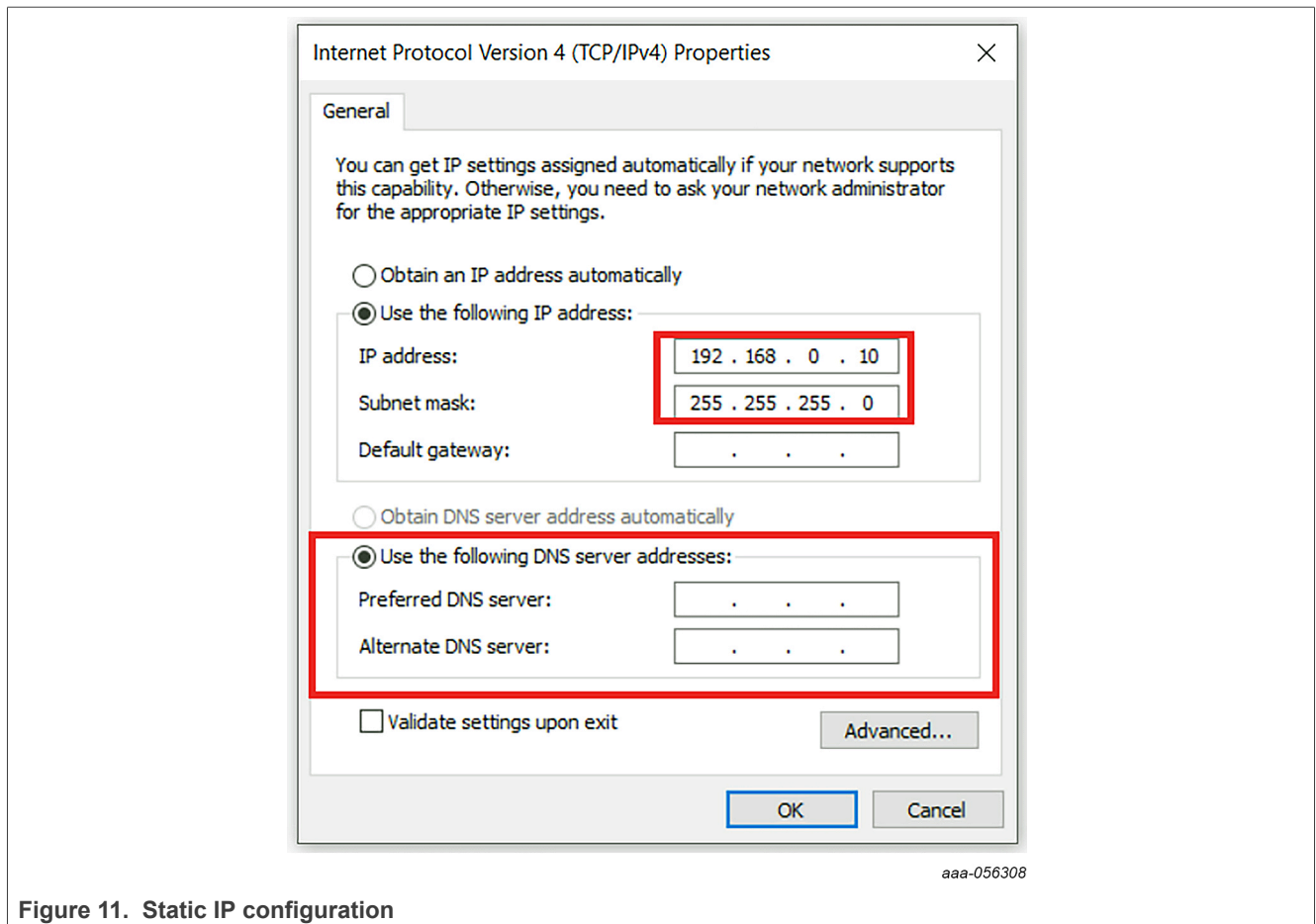


Figure 11. Static IP configuration

Use the same subnet mask, as in [Figure 11](#).

- For the DNS server, you can leave it empty, or select 'Obtain DNS server address automatically'.
- Finally click OK
- Back to the desktop application, after opening the app, you see the image as shown in [Figure 12](#).

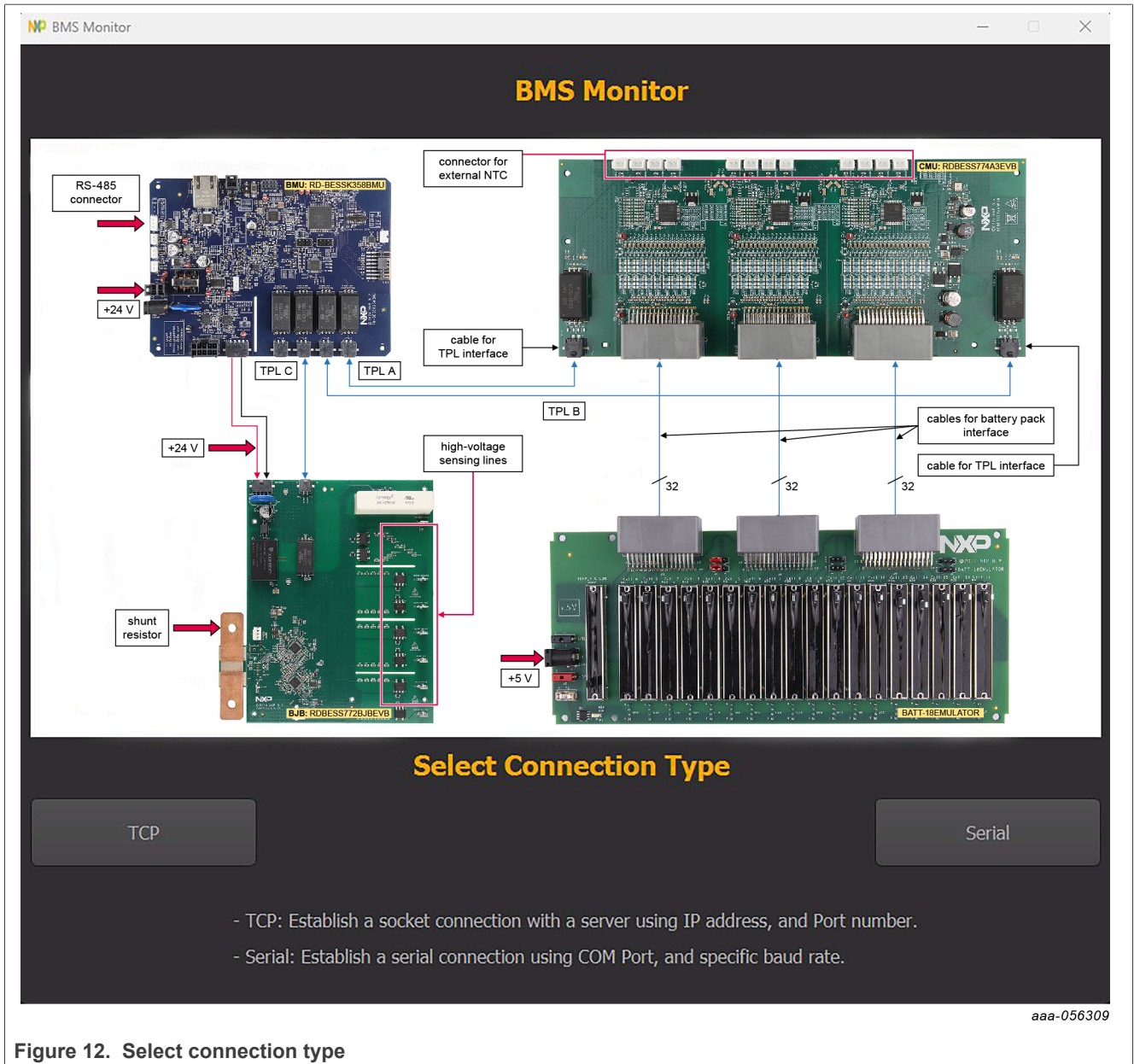


Figure 12. Select connection type

- In the BMS monitor GUI V1.0, click TCP
- Enter the BMU IP address, which is 192.168.0.200. This address is the same for all BMUs.
- Enter the port number, which is 5001
- Click connect to move to the general settings page.

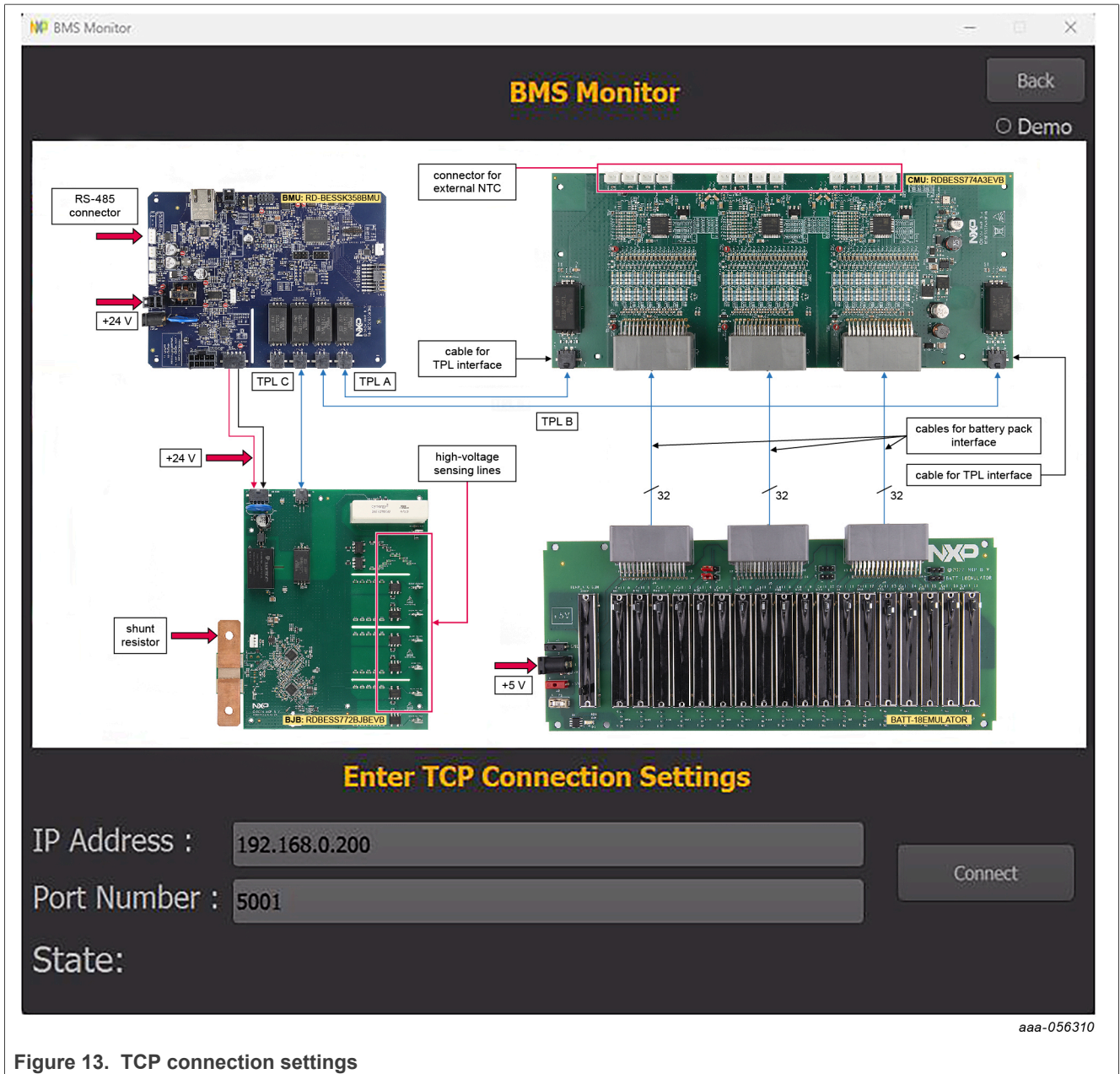


Figure 13. TCP connection settings

### 5.3.4 General settings

- Enter the default BMU address, which is 1. Choose a different address for each BMU.
- Enter the default reading interval, which is 1.  
The reading interval defines how often the application receives new readings from the BMU.
- Define the CMU configuration. Select '3 Cells Monitoring Chip (CMC)'.
- Click 'Next'

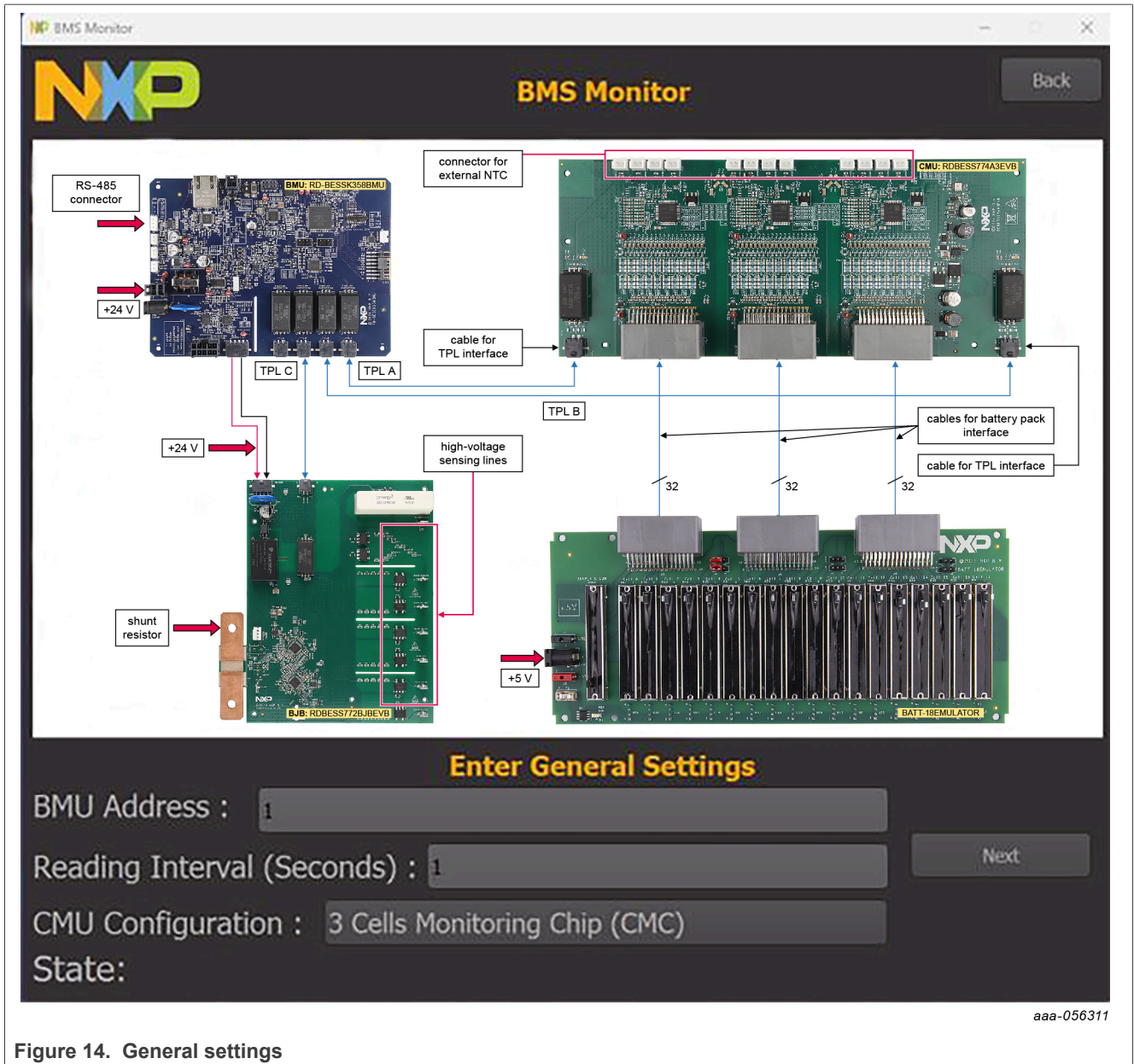


Figure 14. General settings

### 5.3.5 Programming the system

To install the development setup and start programming with the BESS reference design, refer to the software section of the [RD-BESS1500BUN](https://www.nxp.com/products/processors/microprocessors/arm-cortex-processors/arm-cortex-m33/rd-bess1500bun) website.

## 6 References

---

- [1] Battery management unit website: [RD-BESSK358BMU](#)
- [2] Cell monitoring unit website: [RDBESS774A3EVB](#)
- [3] Battery junction box website: [RDBESS772BJBEVB](#)
- [4] Battery cell emulator webpage: [BATT-18EMULATOR](#)
- [5] Bundle webpage: [RD-BESS1500BUN](#)

## 7 Revision history

---

Table 1. Revision history

Document ID	Release date	Description
UM12117 v.1	1 July 2024	<ul style="list-style-type: none"><li>• Initial version</li></ul>



## Legal information

### Definitions

**Draft** — A draft status on a document indicates that the content is still under internal review and subject to formal approval, which may result in modifications or additions. NXP Semiconductors does not give any representations or warranties as to the accuracy or completeness of information included in a draft version of a document and shall have no liability for the consequences of use of such information.

### Disclaimers

**Limited warranty and liability** — Information in this document is believed to be accurate and reliable. However, NXP Semiconductors does not give any representations or warranties, expressed or implied, as to the accuracy or completeness of such information and shall have no liability for the consequences of use of such information. NXP Semiconductors takes no responsibility for the content in this document if provided by an information source outside of NXP Semiconductors.

In no event shall NXP Semiconductors be liable for any indirect, incidental, punitive, special or consequential damages (including - without limitation - lost profits, lost savings, business interruption, costs related to the removal or replacement of any products or rework charges) whether or not such damages are based on tort (including negligence), warranty, breach of contract or any other legal theory.

Notwithstanding any damages that customer might incur for any reason whatsoever, NXP Semiconductors' aggregate and cumulative liability towards customer for the products described herein shall be limited in accordance with the Terms and conditions of commercial sale of NXP Semiconductors.

**Right to make changes** — NXP Semiconductors reserves the right to make changes to information published in this document, including without limitation specifications and product descriptions, at any time and without notice. This document supersedes and replaces all information supplied prior to the publication hereof.

**Applications** — Applications that are described herein for any of these products are for illustrative purposes only. NXP Semiconductors makes no representation or warranty that such applications will be suitable for the specified use without further testing or modification.

Customers are responsible for the design and operation of their applications and products using NXP Semiconductors products, and NXP Semiconductors accepts no liability for any assistance with applications or customer product design. It is customer's sole responsibility to determine whether the NXP Semiconductors product is suitable and fit for the customer's applications and products planned, as well as for the planned application and use of customer's third party customer(s). Customers should provide appropriate design and operating safeguards to minimize the risks associated with their applications and products.

NXP Semiconductors does not accept any liability related to any default, damage, costs or problem which is based on any weakness or default in the customer's applications or products, or the application or use by customer's third party customer(s). Customer is responsible for doing all necessary testing for the customer's applications and products using NXP Semiconductors products in order to avoid a default of the applications and the products or of the application or use by customer's third party customer(s). NXP does not accept any liability in this respect.

**Terms and conditions of commercial sale** — NXP Semiconductors products are sold subject to the general terms and conditions of commercial sale, as published at <https://www.nxp.com/profile/terms>, unless otherwise agreed in a valid written individual agreement. In case an individual agreement is concluded only the terms and conditions of the respective agreement shall apply. NXP Semiconductors hereby expressly objects to applying the customer's general terms and conditions with regard to the purchase of NXP Semiconductors products by customer.

**Export control** — This document as well as the item(s) described herein may be subject to export control regulations. Export might require a prior authorization from competent authorities.

**Evaluation products** — This product is provided on an "as is" and "with all faults" basis for evaluation purposes only. NXP Semiconductors, its affiliates and their suppliers expressly disclaim all warranties, whether express, implied or statutory, including but not limited to the implied warranties of non-infringement, merchantability and fitness for a particular purpose. The entire risk as to the quality, or arising out of the use or performance, of this product remains with customer.

In no event shall NXP Semiconductors, its affiliates or their suppliers be liable to customer for any special, indirect, consequential, punitive or incidental damages (including without limitation damages for loss of business, business interruption, loss of use, loss of data or information, and the like) arising out of the use of or inability to use the product, whether or not based on tort (including negligence), strict liability, breach of contract, breach of warranty or any other theory, even if advised of the possibility of such damages.

Notwithstanding any damages that customer might incur for any reason whatsoever (including without limitation, all damages referenced above and all direct or general damages), the entire liability of NXP Semiconductors, its affiliates and their suppliers and customer's exclusive remedy for all of the foregoing shall be limited to actual damages incurred by customer based on reasonable reliance up to the greater of the amount actually paid by customer for the product or five dollars (US\$5.00). The foregoing limitations, exclusions and disclaimers shall apply to the maximum extent permitted by applicable law, even if any remedy fails of its essential purpose.

**Safety of high-voltage evaluation products** — The non-insulated high voltages that are present when operating this product, constitute a risk of electric shock, personal injury, death and/or ignition of fire. This product is intended for evaluation purposes only. It shall be operated in a designated test area by personnel that is qualified according to local requirements and labor laws to work with non-insulated mains voltages and high-voltage circuits.

The product does not comply with IEC 60950 based national or regional safety standards. NXP Semiconductors does not accept any liability for damages incurred due to inappropriate use of this product or related to non-insulated high voltages. Any use of this product is at customer's own risk and liability. The customer shall fully indemnify and hold harmless NXP Semiconductors from any liability, damages and claims resulting from the use of the product.

**Translations** — A non-English (translated) version of a document, including the legal information in that document, is for reference only. The English version shall prevail in case of any discrepancy between the translated and English versions.

**Security** — Customer understands that all NXP products may be subject to unidentified vulnerabilities or may support established security standards or specifications with known limitations. Customer is responsible for the design and operation of its applications and products throughout their lifecycles to reduce the effect of these vulnerabilities on customer's applications and products. Customer's responsibility also extends to other open and/or proprietary technologies supported by NXP products for use in customer's applications. NXP accepts no liability for any vulnerability. Customer should regularly check security updates from NXP and follow up appropriately. Customer shall select products with security features that best meet rules, regulations, and standards of the intended application and make the ultimate design decisions regarding its products and is solely responsible for compliance with all legal, regulatory, and security related requirements concerning its products, regardless of any information or support that may be provided by NXP.

NXP has a Product Security Incident Response Team (PSIRT) (reachable at [PSIRT@nxp.com](mailto:PSIRT@nxp.com)) that manages the investigation, reporting, and solution release to security vulnerabilities of NXP products.

**Suitability for use in industrial applications (functional safety)** — This NXP product has been qualified for use in industrial applications. It has been developed in accordance with IEC 61508, and has been SIL-classified accordingly. If this product is used by customer in the development of, or for incorporation into, products or services (a) used in safety critical applications or (b) in which failure could lead to death, personal injury, or severe physical or environmental damage (such products and services hereinafter referred to as “Critical Applications”), then customer makes the ultimate design decisions regarding its products and is solely responsible for compliance with all legal, regulatory, safety, and security related requirements concerning its products, regardless of any information or support that may be provided by NXP. As such, customer assumes all risk related to use of any products in Critical Applications and NXP and its suppliers shall not be liable for any such use by customer. Accordingly, customer will indemnify and hold NXP harmless from any claims, liabilities, damages and associated costs and expenses (including attorneys’ fees) that NXP may incur related to customer’s incorporation of any product in a Critical Application.

**NXP B.V.** — NXP B.V. is not an operating company and it does not distribute or sell products.

## Trademarks

Notice: All referenced brands, product names, service names, and trademarks are the property of their respective owners.

**NXP** — wordmark and logo are trademarks of NXP B.V.

## Tables

Tab. 1. Revision history ..... 16

## Figures

Fig. 1.	RD-BESSK358BMU interfaces .....4	Fig. 8.	Polycarbonate structure ..... 9
Fig. 2.	RD-BESSK358BMU cables .....5	Fig. 9.	RD-BESSK358BMU interfaces .....10
Fig. 3.	RDBESS774A3EVB interfaces .....6	Fig. 10.	View network connections ..... 11
Fig. 4.	RDBESS774A3EVB cables .....6	Fig. 11.	Static IP configuration ..... 12
Fig. 5.	RDBESS772BJBEVB interfaces ..... 7	Fig. 12.	Select connection type ..... 13
Fig. 6.	RDBESS772BJBEVB cables .....8	Fig. 13.	TCP connection settings ..... 14
Fig. 7.	BATT-18EMULATOR interfaces ..... 8	Fig. 14.	General settings ..... 15

## Contents

---

<b>1</b>	<b>Important notice</b> .....	<b>2</b>
<b>2</b>	<b>Introduction</b> .....	<b>2</b>
<b>3</b>	<b>Kit content</b> .....	<b>3</b>
<b>4</b>	<b>Getting to know the hardware</b> .....	<b>4</b>
4.1	Battery management unit .....	4
4.2	Cell monitoring unit .....	5
4.3	Battery junction box .....	6
4.4	Battery emulation .....	8
4.5	Polycarbonate structure .....	9
<b>5</b>	<b>First startup</b> .....	<b>9</b>
5.1	Hardware requirements .....	9
5.2	Software requirements .....	9
5.3	Powering and connecting the system .....	9
5.3.1	Connections of the boards .....	10
5.3.2	Powering the boards .....	10
5.3.3	Monitoring the system using the BMS monitor GUI V1.0 .....	11
5.3.4	General settings .....	14
5.3.5	Programming the system .....	15
<b>6</b>	<b>References</b> .....	<b>16</b>
<b>7</b>	<b>Revision history</b> .....	<b>16</b>
	<b>Legal information</b> .....	<b>17</b>

---

Please be aware that important notices concerning this document and the product(s) described herein, have been included in section 'Legal information'.

---

# Mouser Electronics

Authorized Distributor

Click to View Pricing, Inventory, Delivery & Lifecycle Information:

[NXP:](#)

[RD-BESS1500BUN](#) [RDBESS774A3EVB](#) [RD-BESSK358BMU](#)