

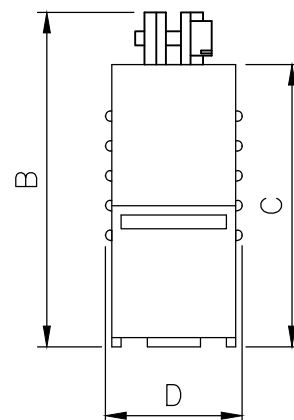
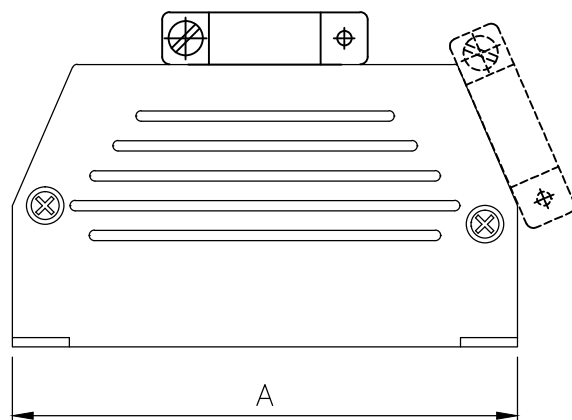
THIS IS A C.A.D. GENERATED DRAWING  
DO NOT MAKE MANUAL REVISIONS TO MASTER.



\* UNLESS OTHERWISE SPECIFIED TOLERANCES  
ON DECIMAL IS:  
UNIT: MM

# BACKSHELL KIT INCLUDES:

- (2) BACKSHELL HALVES
- (2) CLAMP SCREWS
- (2) SHELL SCREWS
- (1) SLIDE LOCK KITS
- (2) SCREWS



DIMENSIONS(MM/IN)				
SIZE	A±0.4	B±0.4	C±0.4	D±0.8
9	32.2	28.6	22.1	15.0
15	39.8	34.1	26.1	15.0
25	54.2	38.3	30.3	15.0
37	70.7	46.2	38.2	15.0

Ordering information: Hood with Slide-Lock

SIZE	P/N-KITTED	Product Code
9-way	2801-0101-01	MHED-DS09S-K
15-way	2801-0101-02	MHED-DS15S-K
25-way	2801-0101-03	MHED-DS25S-K
37-way	2801-0101-04	MHED-DS37S-K

BACKSHELL MATERIAL: FLAME RETARDANT THERMOPLASTIC  
SCREWS: STEEL, ZINC PLATED  
SLIDE LOCK: STEEL, ZINC PLATED

THESE DRAWINGS AND SPECIFICATIONS ARE THE  
PROPERTY OF MH CONNECTORS LTD. AND SHALL NOT  
BE REPRODUCED, COPIED OR USED AS THE BASIS FOR  
THE MANUFACTURE OR SALE OF APPARATUS WITHOUT  
WRITTEN PERMISSION.

DRAWN Haley		DATE 07-29-14	
APPROVED		DATE	
SCALE NTS	SHEET 1	OF 1	REV: 2.0
DRAWING No MHED-DSXXX			



THIS SERIES FULLY CONFORMS TO THE  
EUROPEAN UNION DIRECTIVES 2002/95/EC  
AND 2002/96/EC FOR RoHS COMPLIANCY.



MH CONNECTORS LTD.

# Mouser Electronics

Authorized Distributor

Click to View Pricing, Inventory, Delivery & Lifecycle Information:

[NorComp:](#)

[MHED-DS37S-K](#) [MHED-DS25S-K](#) [MHED-DS15S-K](#)