

THIS IS A C.A.D. GENERATED DRAWING
DO NOT MAKE MANUAL REVISIONS TO MASTER.

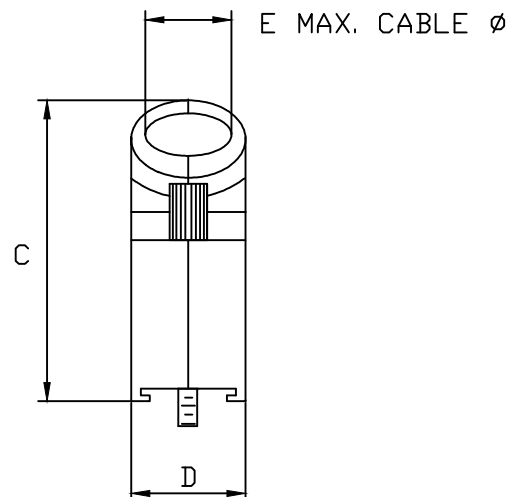
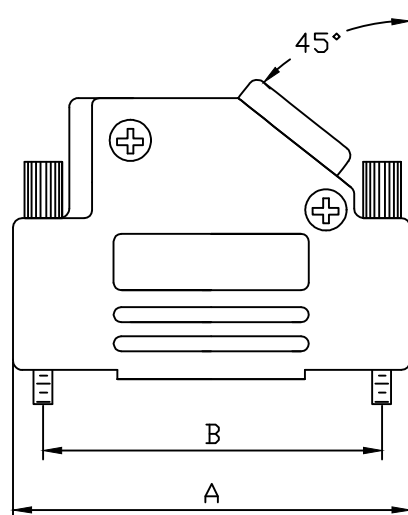


* UNLESS OTHERWISE SPECIFIED TOLERANCES
ON DECIMAL IS: ANGLE $\pm 5^\circ$
UNIT: MM X. ± 0.38
X.X ± 0.25

BACKSHELL KIT INCLUDES:

- (2) BACKSHELL HALVES
- (2) 4-40 THUMBSCREWS
- (2) HOUSING SCREWS
- (1) SET OF COMPRESSION INSERTS—(9 POSITION~37 POSITION)
DIAMETERS: 4mm(.157"), 5mm(.197"), 7mm(.276"), 9mm(.351")

NOTE: 9 POSITION HAS ONLY 1 THUMBSCREW
(OPPOSITE CABLE ENTRY)



BACKSHELL MATERIAL: DIE-CAST ZINC ALLOY
PLATING: CLEAR CHROMATE FOLLOWED BY BLACK ENAMEL
4-40 THUMBSCREWS: STEEL - BLACK OXIDE FINISH
HOODSCREWS: STEEL - BLACK OXIDE FINISH
COMPRESSION INSERT: ABS UL RECOGNIZED
OPERATING TEMP: -40°C TO +120°C

DIMENSIONS(mm/in)

SIZE	A ± 1.0 ($\pm .04$)	B ± 0.25 ($\pm .01$)	C ± 1.5 ($\pm .06$)	D ± 0.5 ($\pm .02$)	E
9	31.0	24.99	36.3	14.5	13.0
	1.22	0.984	1.43	0.57	0.51
15	39.5	33.32	40.3	14.5	13.0
	1.56	1.312	1.59	0.57	0.51
25	53.2	47.04	40.3	14.5	13.0
	2.09	1.852	1.59	0.57	0.51
37	69.7	63.50	40.3	14.5	13.0
	2.74	2.500	1.59	0.57	0.51

ORDERING INFORMATION:

SIZE	P/N - KITTED	PRODUCT CODE
9-WAY	6560-0116-11	MHD45ZK-09-BK-K
15-WAY	6560-0116-12	MHD45ZK-15-BK-K
25-WAY	6560-0116-13	MHD45ZK-25-BK-K
37-WAY	6560-0116-14	MHD45ZK-37-BK-K

SIZE	P/N - BULK	PRODUCT CODE
9-WAY	6561-0116-11	MHD45ZK-09-BK
15-WAY	6561-0116-12	MHD45ZK-15-BK
25-WAY	6561-0116-13	MHD45ZK-25-BK
37-WAY	6561-0116-14	MHD45ZK-37-BK

THESE DRAWINGS AND SPECIFICATIONS ARE THE
PROPERTY OF MH CONNECTORS AND SHALL NOT BE
REPRODUCED, COPIED OR USED AS THE BASIS FOR
THE MANUFACTURE OR SALE OF APPARATUS WITHOUT
WRITTEN PERMISSION.

DRAWN
JOHNNY

DATE
07-21-15

APPROVED
DAMIEN

DATE
07-22-15

SCALE
1 : 1

SHEET OF
1 OF 1

REV:
2.0

DRAWING No
MHD45ZK-BK-SERIES



THIS SERIES FULLY CONFORMS TO THE
EUROPEAN UNION DIRECTIVES 2002/95/EC
AND 2002/96/EC FOR RoHS COMPLIANCY.



MH CONNECTORS,
DIVISION OF EDAC

Mouser Electronics

Authorized Distributor

Click to View Pricing, Inventory, Delivery & Lifecycle Information:

[NorComp:](#)

[MHD45ZK15-BK-K](#) [MHD45ZK25-BK-K](#) [MHD45ZK9-BK-K](#) [MHD45ZK37-BK-K](#)