

10

9

8

7

6

5

4

3

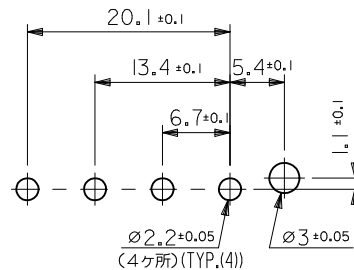
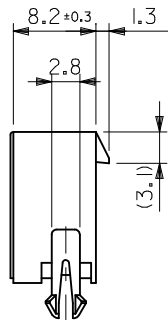
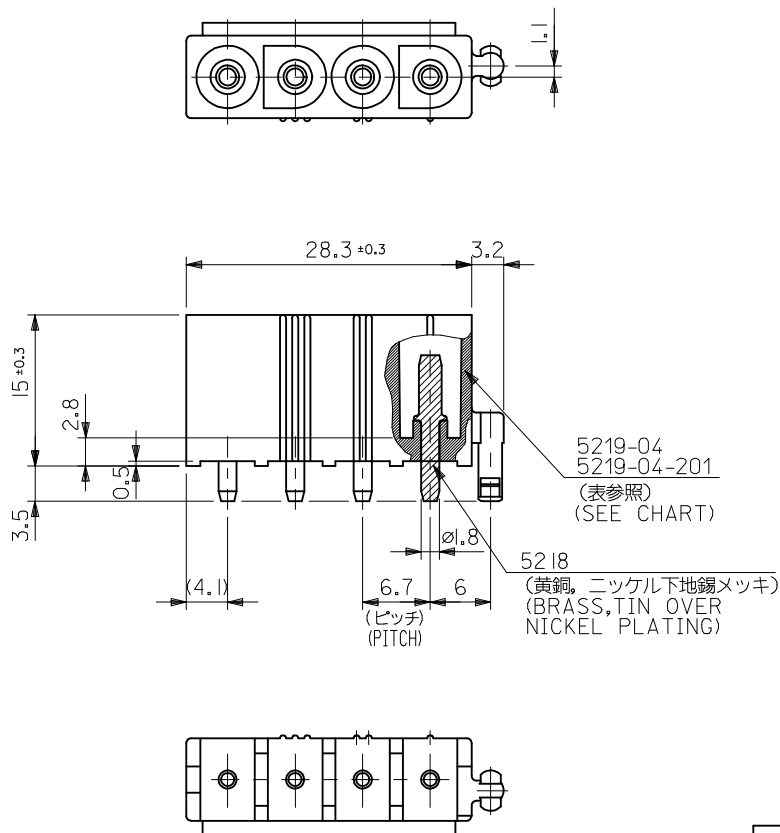
2

1

注記:

NOTES:

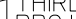
I. 適合リセプタクルハウジング: 3191-04R*

TO BE MATED WITH RECEPTACLE HOUSING :
3191-04R*

基板取付穴推奨寸法

RECOMMENDED P.C. BOARD HOLE DIMENSIONS

ENG. NO.	ORDER NO.	PIN STYLE	HSG. MATERIAL	PIN PLATING
5219-04A	15-31-1046	SOLID	94V-2 NYLON	TIN
5219-04B	15-31-3046	HOLLOW	94V-2 NYLON	TIN
5219-04A-201	39-28-7048	SOLID	94V-0 NYLON	TIN

ADD P/N 15-31-3046 EC NO: UCP2014-1950 DRWN: AELHAG 2013/12/16 CHKD: J.BELL 2013/12/16 APPR: FSWITH 2013/12/19 REV N1	DESCRIPTION	GENERAL TOLERANCES (UNLESS SPECIFIED)		DIMENSION STYLE MM ONLY		SCALE 2:1	DESIGN UNITS METRIC	 THIRD ANGLE PROJECTION	
		10 UNDER	± 0.2	DRAWN BY K. KOHAMA	DATE '00/05/29	TITLE NEW INTERNATIONAL CONN 4 POS. HEADER			
		10 OVER 30 UNDER	± 0.25	CHECKED BY M. FUKUSHIMA	DATE '00/05/29				
		30 OVER	± 0.3	APPROVED BY M. FUKUSHIMA	DATE '00/05/29	MOLEX INCORPORATED			
		ANGULAR ±3 °		MATERIAL NO.		DOCUMENT NO.		SHEET NO.	
		DRAFT WHERE APPLICABLE MUST REMAIN WITHIN DIMENSIONS		SEE CHART		SD-5219-003		1 OF 1	
				SIZE A3		THIS DRAWING CONTAINS INFORMATION THAT IS PROPRIETARY TO MOLEX INCORPORATED AND SHOULD NOT BE USED WITHOUT WRITTEN PERMISSION			

9

8

7

6

5

4

3

2

Mouser Electronics

Authorized Distributor

Click to View Pricing, Inventory, Delivery & Lifecycle Information:

Molex:

[39-28-7048](#)