

ITEM	DESCRIPTION
1	SCREW
2	COVER ASSEMBLY
3	INSERT ASSEMBLY
4	GASKET

S54209NR041**

SERIES _____
 S54= INTERNAL THREAD FORM B INDUSTRIAL
 POLES _____
 2= 2 POLE
 THREAD _____
 09= PG9, M2= M12x1.5, M6= M19x1.5
 MATERIAL AND HOUSING COLOUR _____
 G= PA6 GRAY, N= PA6 BLACK, T= TRANSPARENT
 CIRCUIT _____
 SEE DETAILS IN CATALOGUE
 VOLTAGE _____
 SEE DETAILS IN CATALOGUE
 SCREW AND GASKET _____
 1= NBR PROFILE GASKET & SCREW
 2= NBR FLAT GASKET & SCREW
 3= WHITE SILICON PROFILE GASKET & SCREW
 4= WHITE SILICON FLAT GASKET & SCREW
 A= NBR PROFILE GASKET & SCREW+2mm
 NON STANDARD COMPONENTS _____
 14= PACKED IN NEUTRAL BAG
 P7= IP67 COMPLIANT
 89= DIODE IN SERIES WITH PIN 1
 20= SPRING CLAMP TERMINALS
 AF= MOUNTED FIXING SCREW

NOTES

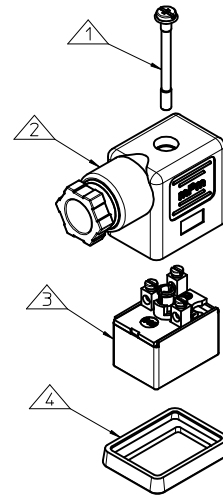
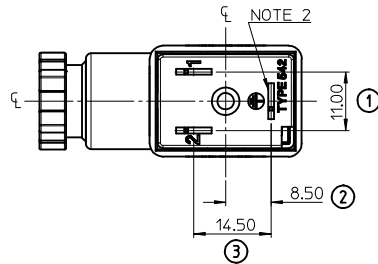
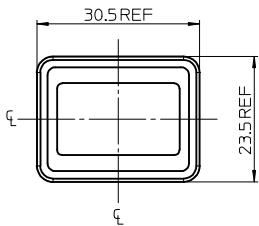
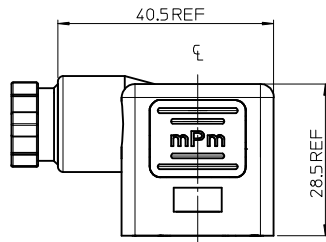
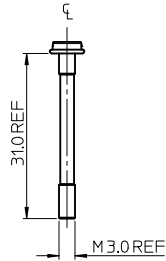
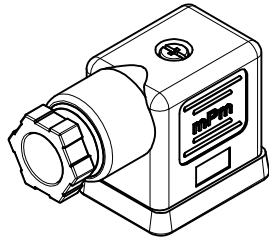
- PLEASE SEE SHEET 2 FOR CURRENTLY CONFIGURED PART NUMBERS. FOR SPECIFIC PART NUMBERS PLEASE CONTACT SALES OR CONSULT THE INTELLIGENT PART NUMBERS IN THE TABLE ATTACHED.
- EARTH POSITION SHOWN, H12
- PRODUCT SPEC: SEE PS-121201-001, WITH EXCEPTION.
- FOR PACKAGING SEE PACKAGING SPEC PK-121064-S54.

LAST INSPECTION NUMBER 3

UPDATED NOTE 3 EC NO: IFC2015-1871 DRWN:BCAFFREY 2015/04/28 CHKD: APPR:STGRUFFIN 2015/05/13	QUALITY SYMBOLS ▽=0 ▽=0	GENERAL TOLERANCES (UNLESS SPECIFIED)		DIMENSION STYLE MM ONLY		SCALE 1.5:1	DESIGN UNITS METRIC	THIRD ANGLE PROJECTION
		4 PLACES ± --- ± --- 3 PLACES ± --- ± --- 2 PLACES ± 0.1 ± --- 1 PLACE ± 0.2 ± --- ANGULAR ± ---°	mm INCH ± --- ± --- ± 0.1 ± --- ± 0.2 ± --- ± ---°	DRAWN BY DSHEA	DATE 2011/06/03	TITLE S54 SERIES INTERNAL THREAD TYPE B INDUSTRIAL		MOLEX INCORPORATED
DRAFT WHERE APPLICABLE MUST REMAIN WITHIN DIMENSIONS		SEE SHEET 2		MATERIAL NO. SD-121064-008		DOCUMENT NO.		THIS DRAWING CONTAINS INFORMATION THAT IS PROPRIETARY TO MOLEX INCORPORATED AND SHOULD NOT BE USED WITHOUT WRITTEN PERMISSION

PART NO	MPM NO	DESCRIPTION	CIRCUIT	VOLTAGE	INDICATOR
1210641033	S54209GR051	TYPE B INDUSTRIAL 2P PG9 GRAY NBR PROFILE GASKET	R0	230V	VDR
1210641036	S54209NR021	TYPE B INDUSTRIAL 2P PG9 BLACK NBR PROFILE GASKET	R0	24V	VDR
1210641037	S54209NR041	TYPE B INDUSTRIAL 2P PG9 BLACK NBR PROFILE GASKET	R0	115V	VDR
1210641038	S54209NR051	TYPE B INDUSTRIAL 2P PG9 BLACK NBR PROFILE GASKET	R0	230V	VDR
1210641045	S54209TA051	TYPE B INDUSTRIAL 2P PG9 TRANSPARENT NBR PROFILE GASKET	A0	230V	LAMP
1210641047	S54209TA121	TYPE B INDUSTRIAL 2P PG9 TRANSPARENT NBR PROFILE GASKET	A1	24V	RED LED
1210641049	S54209TA141	TYPE B INDUSTRIAL 2P PG9 TRANSPARENT NBR PROFILE GASKET	A1	115V	RED LED
1210641051	S54209TA151	TYPE B INDUSTRIAL 2P PG9 TRANSPARENT NBR PROFILE GASKET	A1	230V	RED LED
1210641057	S54209TC321	TYPE B INDUSTRIAL 2P PG9 TRANSPARENT NBR PROFILE GASKET	C3	24V	RED LED
1210641058	S54209TC322	TYPE B INDUSTRIAL 2P PG9 TRANSPARENT NBR FLAT GASKET	C3	24V	RED LED
1210641064	S54209TC421	TYPE B INDUSTRIAL 2P PG9 TRANSPARENT NBR PROFILE GASKET	C4	24V	RED LED
1210641065	S54209TC422	TYPE B INDUSTRIAL 2P PG9 TRANSPARENT NBR FLAT GASKET	C4	24V	RED LED
1210641067	S54209TC441	TYPE B INDUSTRIAL 2P PG9 TRANSPARENT NBR PROFILE GASKET	C4	115V	RED LED
1210641069	S54209TC451	TYPE B INDUSTRIAL 2P PG9 TRANSPARENT NBR PROFILE GASKET	C4	230V	RED LED
1210641070	S54209TC452	TYPE B INDUSTRIAL 2P PG9 TRANSPARENT NBR FLAT GASKET	C4	230V	RED LED
1210641071	S54209TC4B1	TYPE B INDUSTRIAL 2P PG9 TRANSPARENT NBR PROFILE GASKET	C4	24V	GREEN LED
1210641072	S54209TC4C1	TYPE B INDUSTRIAL 2P PG9 TRANSPARENT NBR PROFILE GASKET	C4	48V	GREEN LED
1210641073	S54209TC4D1	TYPE B INDUSTRIAL 2P PG9 TRANSPARENT NBR PROFILE GASKET	C4	115V	GREEN LED
1210641074	S54209TC4E1	TYPE B INDUSTRIAL 2P PG9 TRANSPARENT NBR PROFILE GASKET	C4	230V	GREEN LED
1210641075	S54209TC4H1	TYPE B INDUSTRIAL 2P PG9 TRANSPARENT NBR PROFILE GASKET	C4	24V	YELLOW LED
1210641076	S54209TC4H2	TYPE B INDUSTRIAL 2P PG9 TRANSPARENT NBR FLAT GASKET	C4	24V	YELLOW LED
1210641079	S54209TC4M2	TYPE B INDUSTRIAL 2P PG9 TRANSPARENT NBR FLAT GASKET	C4	230V	YELLOW LED
1210641084	S54209TS021	TYPE B INDUSTRIAL 2P PG9 TRANSPARENT NBR PROFILE GASKET	S0	24V	RED LED
1210641085	S54209TS0B1	TYPE B INDUSTRIAL 2P PG9 TRANSPARENT NBR PROFILE GASKET	S0	24V	GREEN LED
1210641272	S54209TC4L2	TYPE B INDUSTRIAL 2P PG9 TRANSPARENT NBR FLAT GASKET	C4	115V	YELLOW LED
1210641307	S54209TC42A	TYPE B INDUSTRIAL 2P PG9 TRANSPARENT NBR PROFILE GASKET & SCREW +2mm	C4	24V	RED LED
1210641357	S54209TC45A	TYPE B INDUSTRIAL 2P PG9 TRANSPARENT NBR PROFILE GASKET & SCREW +2mm	C4	230V	RED LED
1210641362	S54209TC44A	TYPE B INDUSTRIAL 2P PG9 TRANSPARENT NBR PROFILE GASKET & SCREW +2mm	C4	115V	RED LED
1210641384	S54209TS0H1	TYPE B INDUSTRIAL 2P PG9 TRANSPARENT NBR PROFILE GASKET	S0	24V	YELLOW LED
1210641399	S54209TC3B1	TYPE B INDUSTRIAL 2P PG9 TRANSPARENT NBR PROFILE GASKET	C3	24V	GREEN LED
1210641417	S54209TC4B1P7	TYPE B INDUSTRIAL 2P PG9 TRANSPARENT NBR PROFILE GASKET IP67 COMPLIANT	C4	24V	GREEN LED
1210641430	S54209TR051	TYPE B INDUSTRIAL 2P PG9 TRANSPARENT NBR PROFILE GASKET	R0	230V	VDR
1210641456	S542M6TC321	TYPE B INDUSTRIAL 2P M16x1.5 TRANSPARENT NBR PROFILE GASKET	C3	24V	RED LED
1210641512	S54209TR2B2	TYPE B INDUSTRIAL 2P PG9 TRANSPARENT NBR FLAT GASKET	R2	24V	GREEN LED
1210641592	S542M2TA1D1	TYPE B INDUSTRIAL 2P M12x1.5 TRANSPARENT NBR PROFILE GASKET	A1	115V	GREEN LED
1210641614	S542M2TS021	TYPE B INDUSTRIAL 2P M12x1.5 TRANSPARENT NBR PROFILE GASKET	S0	24V	RED LED
1210641700	S54209TC424	TYPE B INDUSTRIAL 2P PG9 TRANSPARENT SILICON FLAT GASKET	C4	24V	RED LED
1210650385	S54209NE05189	TYPE B INDUSTRIAL 2P PG9 BLACK NBR PROFILE GASKET DIODE IN SERIES WITH PIN 1	E0	230V	DIODE
1210650413	S54209TC4B12Q	TYPE B INDUSTRIAL 2P PG9 TRANSPARENT NBR PROFILE GASKET WITH SPRING CLIP TERMINALS	C4	24V	GREEN LED
1210650485	S54209TC42114	TYPE B INDUSTRIAL 2P PG9 TRANSPARENT NBR PROFILE GASKET IN NEUTRAL BAG	C4	24V	RED LED
1210650492	S54209TC45114	TYPE B INDUSTRIAL 2P PG9 TRANSPARENT NBR PROFILE GASKET IN NEUTRAL BAG	C4	230V	RED LED
1210650596	S542M6TC421	TYPE B INDUSTRIAL 2P M16x1.5 TRANSPARENT NBR PROFILE GASKET	C4	24V	RED LED
1210641792	S542M6TC321AF	TYPE B INDUSTRIAL 2P M16x1.5 TRANSPARENT NBR PROFILE GASKET, MOUNTED FIXING SCREW	C3	24V	RED LED
1210641080	S54209TR221	TYPE B INDUSTRIAL 2P PG9 TRANSPARENT NBR PROFILE GASKET	R2	24V	RED LED
1210641082	S54209TR251	TYPE B INDUSTRIAL 2P PG9 TRANSPARENT NBR PROFILE GASKET	R2	230V	RED LED
1210641803	S54209TR2M2	TYPE B INDUSTRIAL 2P PG9 TRANSPARENT NBR FLAT GASKET	R2	230V	YELLOW LED
1210641083	S54209TR2H1	TYPE B INDUSTRIAL 2P PG9 TRANSPARENT NBR PROFILE GASKET	R2	24V	YELLOW LED
1210641810	S54209TR2M1	TYPE B INDUSTRIAL 2P PG9 TRANSPARENT NBR PROFILE GASKET	R2	230V	YELLOW LED

SEE SHEET 1 EC NO: IPGZ015-1871 DRAWN: BC AFFREY 2015/04/28 CHKD: CHIKO APPR: STGRUFFIN 2015/05/13 DESCRIPTION	QUALITY SYMBOLS $\nabla=0$ $\nabla=0$	GENERAL TOLERANCES (UNLESS SPECIFIED) <table border="1"> <tr><th colspan="2">mm</th><th>INCH</th></tr> <tr><td>4 PLACES</td><td>± ---</td><td>± ---</td></tr> <tr><td>3 PLACES</td><td>± ---</td><td>± ---</td></tr> <tr><td>2 PLACES</td><td>± 0.1</td><td>± ---</td></tr> <tr><td>1 PLACE</td><td>± 0.2</td><td>± ---</td></tr> </table>	mm		INCH	4 PLACES	± ---	± ---	3 PLACES	± ---	± ---	2 PLACES	± 0.1	± ---	1 PLACE	± 0.2	± ---	DIMENSION STYLE MM ONLY DRAWN BY: DSHEA DATE: 2011/06/03 CHECKED BY: DMAHER DATE: 2011/06/08 APPROVED BY: EFOLAN DATE: 2011/06/22 MATERIAL NO.	SCALE 1.5:1 DESIGN UNITS METRIC THIRD ANGLE PROJECTION	TITLE S54 SERIES INTERNAL THREAD TYPE B INDUSTRIAL MOLEX INCORPORATED DOCUMENT NO.	SHEET NO. 2 OF 2
	mm		INCH																		
4 PLACES	± ---	± ---																			
3 PLACES	± ---	± ---																			
2 PLACES	± 0.1	± ---																			
1 PLACE	± 0.2	± ---																			
DRAFT WHERE APPLICABLE MUST REMAIN WITHIN DIMENSIONS	SEE TABLE SIZE A 2 THIS DRAWING CONTAINS INFORMATION THAT IS PROPRIETARY TO MOLEX INCORPORATED AND SHOULD NOT BE USED WITHOUT WRITTEN PERMISSION																				



ITEM	DESCRIPTION
1	SCREW
2	COVER ASSEMBLY
3	INSERT ASSEMBLY
4	GASKET

S54209NR041**

SERIES _____
 S54= INTERNAL THREAD FORM B INDUSTRIAL
 POLES _____
 2= 2 POLE
 THREAD _____
 09= PG9, M2= M12x1.5, M6= M19x1.5
 MATERIAL AND HOUSING COLOUR _____
 G= PA6 GRAY, N= PA6 BLACK, T= TRANSPARENT
 CIRCUIT _____
 SEE DETAILS IN CATALOGUE
 VOLTAGE _____
 SEE DETAILS IN CATALOGUE
 SCREW AND GASKET _____
 1= NBR PROFILE GASKET & SCREW
 2= NBR FLAT GASKET & SCREW
 3= WHITE SILICON PROFILE GASKET & SCREW
 4= WHITE SILICON FLAT GASKET & SCREW
 A= NBR PROFILE GASKET & SCREW+2mm
 NON STANDARD COMPONENTS _____
 14= PACKED IN NEUTRAL BAG
 P7= IP67 COMPLIANT
 89= DIODE IN SERIES WITH PIN 1
 20= SPRING CLAMP TERMINALS
 AF= MOUNTED FIXING SCREW

- NOTES
- PLEASE SEE SHEET 2 FOR CURRENTLY CONFIGURED PART NUMBERS. FOR SPECIFIC PART NUMBERS PLEASE CONTACT SALES OR CONSULT THE INTELLIGENT PART NUMBERS IN THE TABLE ATTACHED.
 - EARTH POSITION SHOWN, H12
 - PRODUCT SPEC: SEE PS-121201-001, WITH EXCEPTION.
 - FOR PACKAGING SEE PACKAGING SPEC PK-121064-S54.

LAST INSPECTION NUMBER 3

<p>UPDATED NOTE 3 EC NO: IFC2015-1871 DRWN:BCAFFREY 2015/04/28 CHKD: APPR:STGRUFFIN 2015/05/13</p>	<p>QUALITY SYMBOLS ▽=0 ▽=0</p>	<p>GENERAL TOLERANCES (UNLESS SPECIFIED)</p> <table border="1"> <thead> <tr> <th></th> <th>mm</th> <th>INCH</th> </tr> </thead> <tbody> <tr> <td>4 PLACES</td> <td>±---</td> <td>±---</td> </tr> <tr> <td>3 PLACES</td> <td>±---</td> <td>±---</td> </tr> <tr> <td>2 PLACES</td> <td>±0.1</td> <td>±---</td> </tr> <tr> <td>1 PLACE</td> <td>±0.2</td> <td>±---</td> </tr> <tr> <td colspan="3">ANGULAR ±---°</td> </tr> </tbody> </table>		mm	INCH	4 PLACES	±---	±---	3 PLACES	±---	±---	2 PLACES	±0.1	±---	1 PLACE	±0.2	±---	ANGULAR ±---°			<p>DIMENSION STYLE MM ONLY</p>	<p>SCALE 1.5:1</p>	<p>DESIGN UNITS METRIC</p>	<p>THIRD ANGLE PROJECTION</p>
		mm	INCH																					
	4 PLACES	±---	±---																					
	3 PLACES	±---	±---																					
2 PLACES	±0.1	±---																						
1 PLACE	±0.2	±---																						
ANGULAR ±---°																								
<p>DRAFT WHERE APPLICABLE MUST REMAIN WITHIN DIMENSIONS</p>		<p>DRAWN BY: DSHEA DATE: 2011/06/03</p> <p>CHECKED BY: DMAHER DATE: 2011/06/08</p> <p>APPROVED BY: EFOLAN DATE: 2011/06/22</p>	<p>TITLE S54 SERIES INTERNAL THREAD TYPE B INDUSTRIAL</p>																					
		<p>SEE SHEET 2</p>		<p>DOCUMENT NO. SD-121064-008</p>		<p>SHEET NO. 1 OF 2</p>																		
<p>THIS DRAWING CONTAINS INFORMATION THAT IS PROPRIETARY TO MOLEX INCORPORATED AND SHOULD NOT BE USED WITHOUT WRITTEN PERMISSION</p>																								

PART NO	MPM NO	DESCRIPTION	CIRCUIT	VOLTAGE	INDICATOR
1210641033	S54209GR051	TYPE B INDUSTRIAL 2P PG9 GRAY NBR PROFILE GASKET	R0	230V	VDR
1210641036	S54209NR021	TYPE B INDUSTRIAL 2P PG9 BLACK NBR PROFILE GASKET	R0	24V	VDR
1210641037	S54209NR041	TYPE B INDUSTRIAL 2P PG9 BLACK NBR PROFILE GASKET	R0	115V	VDR
1210641038	S54209NR051	TYPE B INDUSTRIAL 2P PG9 BLACK NBR PROFILE GASKET	R0	230V	VDR
1210641045	S54209TA051	TYPE B INDUSTRIAL 2P PG9 TRANSPARENT NBR PROFILE GASKET	A0	230V	LAMP
1210641047	S54209TA121	TYPE B INDUSTRIAL 2P PG9 TRANSPARENT NBR PROFILE GASKET	A1	24V	RED LED
1210641049	S54209TA141	TYPE B INDUSTRIAL 2P PG9 TRANSPARENT NBR PROFILE GASKET	A1	115V	RED LED
1210641051	S54209TA151	TYPE B INDUSTRIAL 2P PG9 TRANSPARENT NBR PROFILE GASKET	A1	230V	RED LED
1210641057	S54209TC321	TYPE B INDUSTRIAL 2P PG9 TRANSPARENT NBR PROFILE GASKET	C3	24V	RED LED
1210641058	S54209TC322	TYPE B INDUSTRIAL 2P PG9 TRANSPARENT NBR FLAT GASKET	C3	24V	RED LED
1210641064	S54209TC421	TYPE B INDUSTRIAL 2P PG9 TRANSPARENT NBR PROFILE GASKET	C4	24V	RED LED
1210641065	S54209TC422	TYPE B INDUSTRIAL 2P PG9 TRANSPARENT NBR FLAT GASKET	C4	24V	RED LED
1210641067	S54209TC441	TYPE B INDUSTRIAL 2P PG9 TRANSPARENT NBR PROFILE GASKET	C4	115V	RED LED
1210641069	S54209TC451	TYPE B INDUSTRIAL 2P PG9 TRANSPARENT NBR PROFILE GASKET	C4	230V	RED LED
1210641070	S54209TC452	TYPE B INDUSTRIAL 2P PG9 TRANSPARENT NBR FLAT GASKET	C4	230V	RED LED
1210641071	S54209TC4B1	TYPE B INDUSTRIAL 2P PG9 TRANSPARENT NBR PROFILE GASKET	C4	24V	GREEN LED
1210641072	S54209TC4C1	TYPE B INDUSTRIAL 2P PG9 TRANSPARENT NBR PROFILE GASKET	C4	48V	GREEN LED
1210641073	S54209TC4D1	TYPE B INDUSTRIAL 2P PG9 TRANSPARENT NBR PROFILE GASKET	C4	115V	GREEN LED
1210641074	S54209TC4E1	TYPE B INDUSTRIAL 2P PG9 TRANSPARENT NBR PROFILE GASKET	C4	230V	GREEN LED
1210641075	S54209TC4H1	TYPE B INDUSTRIAL 2P PG9 TRANSPARENT NBR PROFILE GASKET	C4	24V	YELLOW LED
1210641076	S54209TC4H2	TYPE B INDUSTRIAL 2P PG9 TRANSPARENT NBR FLAT GASKET	C4	24V	YELLOW LED
1210641079	S54209TC4M2	TYPE B INDUSTRIAL 2P PG9 TRANSPARENT NBR FLAT GASKET	C4	230V	YELLOW LED
1210641084	S54209TS021	TYPE B INDUSTRIAL 2P PG9 TRANSPARENT NBR PROFILE GASKET	S0	24V	RED LED
1210641085	S54209TS0B1	TYPE B INDUSTRIAL 2P PG9 TRANSPARENT NBR PROFILE GASKET	S0	24V	GREEN LED
1210641272	S54209TC4L2	TYPE B INDUSTRIAL 2P PG9 TRANSPARENT NBR FLAT GASKET	C4	115V	YELLOW LED
1210641307	S54209TC42A	TYPE B INDUSTRIAL 2P PG9 TRANSPARENT NBR PROFILE GASKET & SCREW +2mm	C4	24V	RED LED
1210641357	S54209TC45A	TYPE B INDUSTRIAL 2P PG9 TRANSPARENT NBR PROFILE GASKET & SCREW +2mm	C4	230V	RED LED
1210641362	S54209TC44A	TYPE B INDUSTRIAL 2P PG9 TRANSPARENT NBR PROFILE GASKET & SCREW +2mm	C4	115V	RED LED
1210641384	S54209TS0H1	TYPE B INDUSTRIAL 2P PG9 TRANSPARENT NBR PROFILE GASKET	S0	24V	YELLOW LED
1210641399	S54209TC3B1	TYPE B INDUSTRIAL 2P PG9 TRANSPARENT NBR PROFILE GASKET	C3	24V	GREEN LED
1210641417	S54209TC4B1P7	TYPE B INDUSTRIAL 2P PG9 TRANSPARENT NBR PROFILE GASKET IP67 COMPLIANT	C4	24V	GREEN LED
1210641430	S54209TR051	TYPE B INDUSTRIAL 2P PG9 TRANSPARENT NBR PROFILE GASKET	R0	230V	VDR
1210641456	S542M6TC321	TYPE B INDUSTRIAL 2P M16x1.5 TRANSPARENT NBR PROFILE GASKET	C3	24V	RED LED
1210641512	S54209TR2B2	TYPE B INDUSTRIAL 2P PG9 TRANSPARENT NBR FLAT GASKET	R2	24V	GREEN LED
1210641592	S542M2TA1D1	TYPE B INDUSTRIAL 2P M12x1.5 TRANSPARENT NBR PROFILE GASKET	A1	115V	GREEN LED
1210641614	S542M2TS021	TYPE B INDUSTRIAL 2P M12x1.5 TRANSPARENT NBR PROFILE GASKET	S0	24V	RED LED
1210641700	S54209TC424	TYPE B INDUSTRIAL 2P PG9 TRANSPARENT SILICON FLAT GASKET	C4	24V	RED LED
1210650385	S54209NE05189	TYPE B INDUSTRIAL 2P PG9 BLACK NBR PROFILE GASKET DIODE IN SERIES WITH PIN 1	E0	230V	DIODE
1210650413	S54209TC4B12Q	TYPE B INDUSTRIAL 2P PG9 TRANSPARENT NBR PROFILE GASKET WITH SPRING CLIP TERMINALS	C4	24V	GREEN LED
1210650485	S54209TC42114	TYPE B INDUSTRIAL 2P PG9 TRANSPARENT NBR PROFILE GASKET IN NEUTRAL BAG	C4	24V	RED LED
1210650492	S54209TC45114	TYPE B INDUSTRIAL 2P PG9 TRANSPARENT NBR PROFILE GASKET IN NEUTRAL BAG	C4	230V	RED LED
1210650596	S542M6TC421	TYPE B INDUSTRIAL 2P M16x1.5 TRANSPARENT NBR PROFILE GASKET	C4	24V	RED LED
1210641792	S542M6TC321AF	TYPE B INDUSTRIAL 2P M16x1.5 TRANSPARENT NBR PROFILE GASKET, MOUNTED FIXING SCREW	C3	24V	RED LED
1210641080	S54209TR221	TYPE B INDUSTRIAL 2P PG9 TRANSPARENT NBR PROFILE GASKET	R2	24V	RED LED
1210641082	S54209TR251	TYPE B INDUSTRIAL 2P PG9 TRANSPARENT NBR PROFILE GASKET	R2	230V	RED LED
1210641803	S54209TR2M2	TYPE B INDUSTRIAL 2P PG9 TRANSPARENT NBR FLAT GASKET	R2	230V	YELLOW LED
1210641083	S54209TR2H1	TYPE B INDUSTRIAL 2P PG9 TRANSPARENT NBR PROFILE GASKET	R2	24V	YELLOW LED
1210641810	S54209TR2M1	TYPE B INDUSTRIAL 2P PG9 TRANSPARENT NBR PROFILE GASKET	R2	230V	YELLOW LED

SEE SHEET 1 EC NO: IPGZ015-1871 DRAWN: BCAFREY 2015/04/28 CHKD: CHIKO APPR: SUGIYAMA 2015/05/13 DESCRIPTION	QUALITY SYMBOLS $\nabla=0$ $\nabla=0$	GENERAL TOLERANCES (UNLESS SPECIFIED) <table border="1"> <tr><th colspan="2">mm</th><th>INCH</th></tr> <tr><td>4 PLACES</td><td>± ---</td><td>± ---</td></tr> <tr><td>3 PLACES</td><td>± ---</td><td>± ---</td></tr> <tr><td>2 PLACES</td><td>± 0.1</td><td>± ---</td></tr> <tr><td>1 PLACE</td><td>± 0.2</td><td>± ---</td></tr> <tr><td colspan="3">ANGULAR ± ---°</td></tr> </table>	mm		INCH	4 PLACES	± ---	± ---	3 PLACES	± ---	± ---	2 PLACES	± 0.1	± ---	1 PLACE	± 0.2	± ---	ANGULAR ± ---°			DIMENSION STYLE MM ONLY DRAWN BY: DSHEA DATE: 2011/06/03 CHECKED BY: DMAHER DATE: 2011/06/08 APPROVED BY: EFOLAN DATE: 2011/06/22 MATERIAL NO.	SCALE 1.5:1 DESIGN UNITS METRIC THIRD ANGLE PROJECTION	TITLE S54 SERIES INTERNAL THREAD TYPE B INDUSTRIAL MOLEX INCORPORATED DOCUMENT NO.	SHEET NO. 2 OF 2
	mm		INCH																					
	4 PLACES	± ---	± ---																					
	3 PLACES	± ---	± ---																					
2 PLACES	± 0.1	± ---																						
1 PLACE	± 0.2	± ---																						
ANGULAR ± ---°																								
DRAFT WHERE APPLICABLE MUST REMAIN WITHIN DIMENSIONS		SEE TABLE		SD-121064-008		THIS DRAWING CONTAINS INFORMATION THAT IS PROPRIETARY TO MOLEX INCORPORATED AND SHOULD NOT BE USED WITHOUT WRITTEN PERMISSION																		

Mouser Electronics

Authorized Distributor

Click to View Pricing, Inventory, Delivery & Lifecycle Information:

[Molex:](#)

[1210641058](#)