

PLEASE CHECK WWW.MOLEX.COM FOR LATEST PART INFORMATION

Part Number: [1727080012](#)
Status: **Active**
Overview: [Mini-Fit Family Power Connectors](#)
Description: Mini-Fit TPA2 Receptacle Housing, 4.20mm Pitch, Dual Row, UL 94V-0, Low-Halogen, 12 Circuits

Documents:

Drawing (PDF)	Packaging Specification PK-172708-0000-000 (PDF)
3D Model	Test Summary 1727180001-TS-000 (PDF)
3D Model (PDF)	Test Summary 1727180002-TS-000 (PDF)
Product Specification 2029880001-PS-000 (PDF)	Datasheet (PDF)
Product Specification PS-172718-0000-001 (PDF)	RoHS Certificate of Compliance (PDF)
Application Specification AS-172718-0000-001 (PDF)	

Agency Certification

UL EU-01109

General

Product Family Crimp Housings
 Series [172708](#)
 Application Power, Wire-to-Board, Wire-to-Wire
 Comments See product specification for current derating information.
 Overview [Mini-Fit Family Power Connectors](#)
 Product Name Mini-Fit TPA2
 UPC 889056178099

Physical

Circuits (maximum) 12
 Color - Resin Black
 Flammability 94V-0
 Gender Receptacle
 Glow-Wire Capable No
 Lock to Mating Part Yes
 Material - Resin Nylon
 Net Weight 2.100/g
 Number of Rows 2
 Packaging Type Bag
 Panel Mount No
 Pitch - Mating Interface 4.20mm
 Pitch - Termination Interface 4.20mm
 Polarized to Mating Part Yes
 Stackable No
 Temperature Range - Operating -40° to +105°C

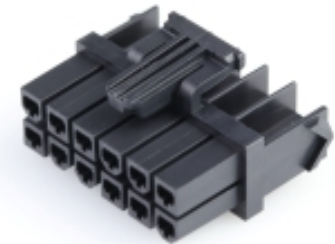
Solder Process Data

Lead-freeProcess Capability N/A

Material Info

Reference - Drawing Numbers

Application Specification AS-172718-0000-001
 Packaging Specification PK-172708-0000-000
 Product Specification 2029880001-PS-000, PS-172718-0000-001
 Sales Drawing SD-172708-0000-000
 Test Summary 1727180001-TS-000, 1727180002-TS-000



Series image - Reference only

EU ELV

Not Relevant

EU RoHS

Compliant

REACH SVHC

Not Contained Per -
 D(2021)4569-DC (8
 July 2021)

Halogen-Free

Status

Low-Halogen

For more information, please visit [Contact US](#)

China ROHS

ELV

RoHS Phthalates

China RoHS

Green Image

Not Relevant

Not Contained

Search Parts in this Series

[172708](#) Series

Mates With

Mini-Fit TPA2 Plug Housing [172762](#) ,
[172767](#) . Mini-Fit Jr. Plug Housing [5559](#) .
 Mini-Fit Jr. Header [5566](#) , [5569](#) , [35318](#) ,
[44130](#) , [87427](#) , [172448](#) , [46991](#) , [35317](#) ,
[43460](#) , [87427](#) , [172447](#) , [46207](#) . Mini-Fit
 Sigma Sealed Plug Housing [207017](#) . Mini-
 Fit Jr. Test Plug [44281](#)

Use With

Mini-Fit TPA2/Sigma Female Terminal
[172718](#) , [202988](#) . Mini-Fit TPA2 Retainer
[172709](#) . Mini-Fit TPA2 CPA Retainer
[203603](#)

This document was generated on 08/31/2021

PLEASE CHECK WWW.MOLEX.COM FOR LATEST PART INFORMATION

Mouser Electronics

Authorized Distributor

Click to View Pricing, Inventory, Delivery & Lifecycle Information:

[Molex:](#)

[172708-0012](#)