

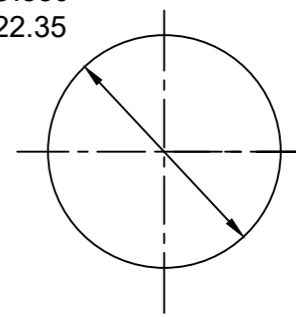
- NOTES:
1. MATERIAL: AS NOTED
 2. FINISH: AS NOTED
 3. ELECTRICAL:
 - (B) VOLTAGE: 483V PER IEC60664
600V PER UL2237
CURRENT: 15A
 4. TEMP RATING: -20°TO +90°C
 5. PROTECTION: IP67 (WHEN MATED)
 6. COUPLING THREAD: 7/8-16UN
 - (B) 7. UL LISTED FILE: E258992
 8. ALL DIMS ARE FOR REFERENCE UNLESS NOTED OR TOLERANCED OTHERWISE

PART NUMBER LEGEND

1R4006A82M005G

FINISHED LENGTH:
M005= 0.5 METER
M010= 1 METER
M100= 10 METER

Ø.880
22.35



REF. KNOCKOUT HOLE

| ITEM | DESCRIPTION | MATERIAL | FINISH |
|------|---------------------------|----------------|---------------|
| 6 | FLAG LABEL | VINYL | BLACK/YELLOW |
| 5 | POTTING MATERIAL | EPOXY | |
| 4 | WIRE, 14 AWG (UL1015) (B) | PVC INSULATION | SEE FACE VIEW |
| 3 | CONTACT PIN | COPPER ALLOY | GOLD PLATED |
| 2 | MALE INSERT | TPE (B) | BLACK |
| 1 | RECEPTACLE SHELL | ZINC DIE-CAST | BLACK |

| | | | |
|---------|--|---|---|
| SYMBOLS | | THIS DRAWING CONTAINS INFORMATION THAT IS PROPRIETARY TO MOLEX ELECTRONIC TECHNOLOGIES, LLC AND SHOULD NOT BE USED WITHOUT WRITTEN PERMISSION | |
| ▽ = 0 | DIMENSION UNITS | SCALE | CURRENT REV DESC: WIRE WAS THHN, INSERT WAS PVC, IEC VOLTAGE WAS 320, 1.11 WAS 1.10, ADD 90 DEG F FOR KEY, ADD NOTE 7 |
| ▽ = 0 | INCH/MM | 1:1 | |
| ▽ = 0 | GENERAL TOLERANCES (UNLESS SPECIFIED) | | |
| ▽ = 0 | | mm | INCH |
| ▽ = 0 | 4 PLACES | ±--- | ±--- |
| ▽ = 0 | 3 PLACES | ±--- | ±--- |
| ▽ = 0 | 2 PLACES | ±--- | ±--- |
| ▽ = 0 | 1 PLACE | ±--- | ±--- |
| ▽ = 0 | 0 PLACES | ±--- | ±--- |
| ▽ = 0 | ANGULAR TOL ± | --- | ° |
| ▽ = 0 | DRAFT WHERE APPLICABLE MUST REMAIN WITHIN DIMENSIONS | THIRD ANGLE PROJECTION | DRAWING SERIES |
| | | B-SIZE | 130066 |
| | | MATERIAL NUMBER | CUSTOMER SHEET NUMBER |
| | | SD-130066-073 | GENERAL MARKET 1 OF 1 |

molex

MINI-CHANGE RECEPTACLE
MALE, 4P, 14 AWG 1/2 NPT

PRODUCT CUSTOMER DRAWING

DOCUMENT NUMBER: SD-130066-073
DOC TYPE: PSD
DOC PART: 001
REVISION: B

Mouser Electronics

Authorized Distributor

Click to View Pricing, Inventory, Delivery & Lifecycle Information:

[Molex:](#)

[1300660332](#)