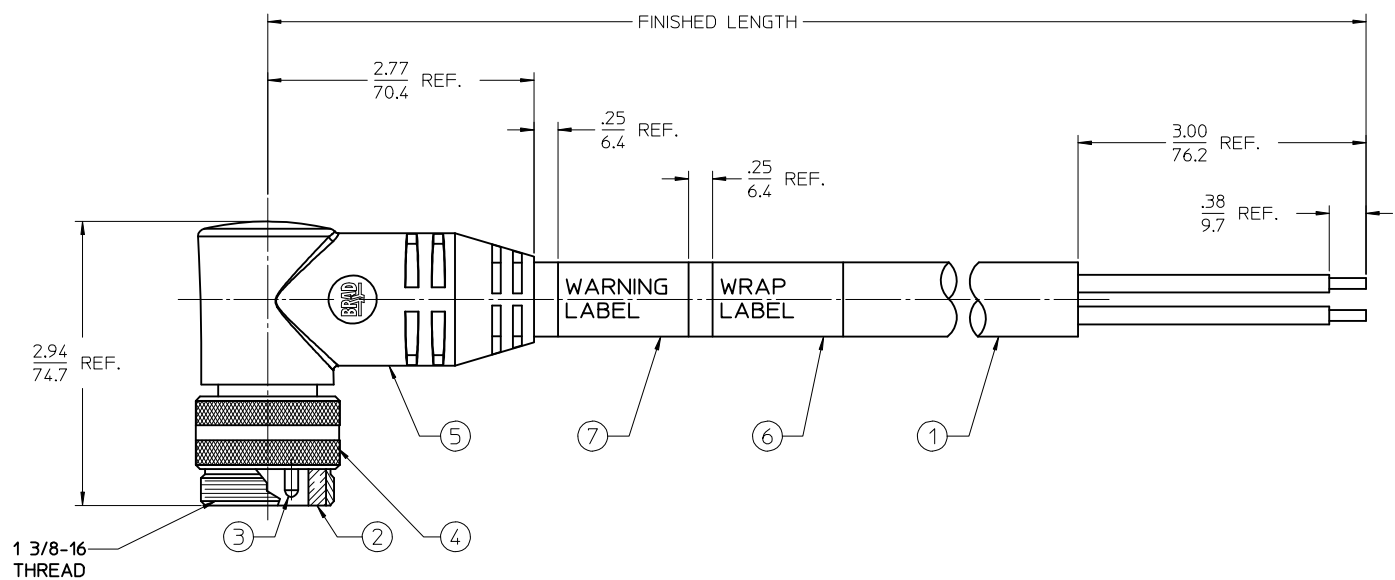
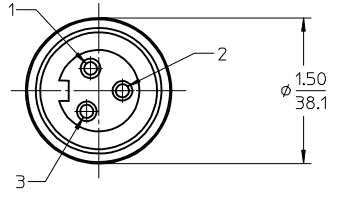


1	BLACK
2	GREEN/YELLOW
3	WHITE

WIRING DIAGRAM



1 3/8-16  
THREAD

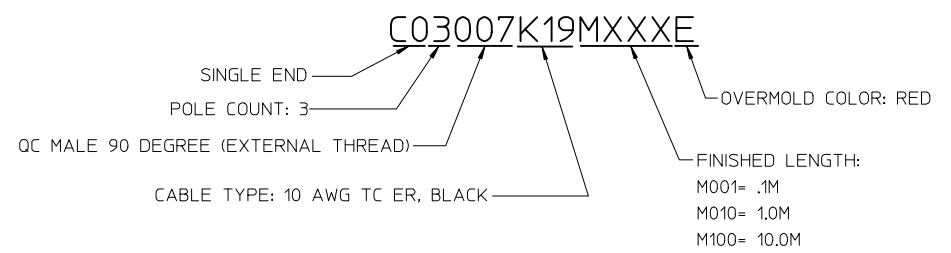


FEMALE FACE VIEW

NOTES:

- 1) MATERIAL: SEE TABLE
- 2) FINISHES: SEE TABLE
- 3) WRAP LABEL IS MARKED WITH P/N, DATE CODE VOLTAGE & AMPERAGE
- 4) MATES WITH: QUICK CHANGE 3 POLE RECEPTACLE
- 5) ELECTRICAL DATA:  
 10AWG UL TYPE: TC-ER STRANDED CABLE  
 MAX VOLTAGE: 600V  
 MAX CURRENT: 32A  
 PROTECTION IP67 (WHEN MATED)  
 TEMPERATURE RANGE: -20°C TO 90°C
- 6) PACKAGING:  
 CABLE ASSEMBLIES ARE BAGGED SEPERATLY IN POLY BAGS WITH BAR CODE LABEL ATTACHED TO OUTSIDE OF BAG.
- 7) ASSEMBLY IS RoHS COMPLIANT

PART NUMBER LEGEND



7	1	WARNING LABEL	VINYL	ORANGE/BLACK
6	1	WRAP LABEL	VINYL	BLACK/YELLOW
5	1	OVERMOLD	PVC	RED
4	1	COUPLING	ALUMINUM	CLEAR ANODIZE
3	3	CONTACT PIN	Cu ALLOY	GOLD PLATED
2	1	INSERT	PVC	BLACK
1	1	CABLE, 10/3 TC-ER (SEE NOTE 5)	TPE JACKET	BLACK
ITEM	QTY.	DESCRIPTION	MATERIAL	FINISH

RELEASED	EC NO: IPGZ016-0830	2015/12/08
DRWNR:STONE	CHKD:	2016/02/29
APPR: BWOODMAN	DESCRIPTION	
REV		

QUALITY SYMBOLS	▽=0		
▽=0			
▽=0			
GENERAL TOLERANCES (UNLESS SPECIFIED)			
	mm		
	INCH		
4 PLACES ±	---	±	---
3 PLACES ±	---	±	---
2 PLACES ±	---	±	.01
1 PLACE ±	0.3	±	---
0 PLACE ±	---	±	---
ANGULAR ± 1°			
DRAFT WHERE APPLICABLE MUST REMAIN WITHIN DIMENSIONS			

DIMENSION STYLE	
IN/MM	
DRAWN BY	DATE
RSTONE	2015/12/08
CHECKED BY	DATE
APPROVED BY	DATE
BWOODMAN	2016/02/29
MATERIAL NO.	

SCALE	DESIGN UNITS	THIRD ANGLE PROJECTION
1:1	INCH	☉ □
TITLE		
QUICK CHANGE CORD ASSY		
MALE 90 DEG, RED		
10AWG TPE CABLE		
<b>molex</b>		
DOCUMENT NO.	SHEET NO.	
SD-130063-094	1 OF 1	
THIS DRAWING CONTAINS INFORMATION THAT IS PROPRIETARY TO MOLEX INCORPORATED AND SHOULD NOT BE USED WITHOUT WRITTEN PERMISSION		

# Mouser Electronics

Authorized Distributor

Click to View Pricing, Inventory, Delivery & Lifecycle Information:

[Molex:](#)

[1300630272](#)