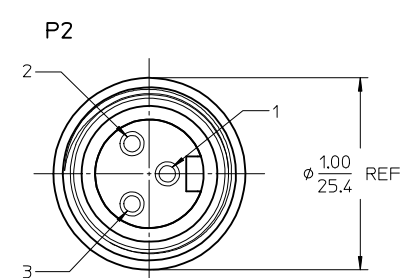
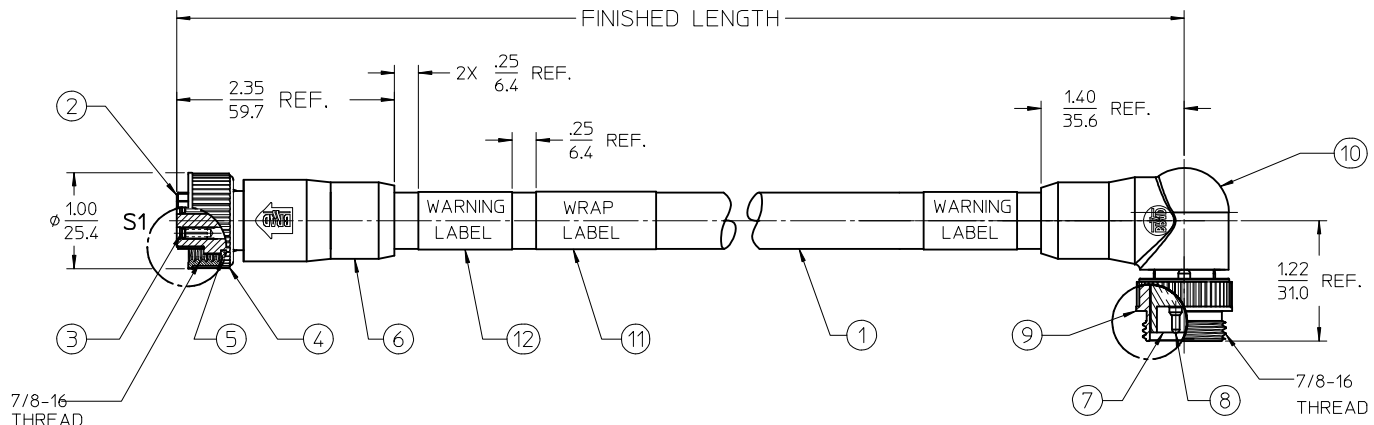


FACE VIEW FEMALE
SCALE: 2X



FACE VIEW MALE
SCALE: 2X

NOTES:

- 1) MATERIAL: SEE TABLE
- 2) FINISHES: SEE TABLE
- 3) WRAP LABEL IS MARKED WITH P/N, DATE CODE VOLTAGE & AMPERAGE
- 4) MATES WITH: MINI CHANGE 3 POLE RECEPTACLE
- 5) ELECTRICAL DATA:
 14AWG UL TYPE: TC-ER STRANDED CABLE
 MAX VOLTAGE: 600V
 MAX CURRENT: 15A
 PROTECTION IP67 (WHEN MATED)
 TEMPERATURE RANGE: -20°C TO 90°C
- 6) PACKAGING:
 CABLE ASSEMBLIES ARE BAGGED SEPERATLY IN POLY BAGS WITH BAR CODE LABEL ATTACHED TO OUTSIDE OF BAG.
- 7) ASSEMBLY IS RoHS COMPLIANT

S1		P2	
1	GREEN/YELLOW	1	
2	BLACK	2	
3	WHITE	3	

WIRING DIAGRAM

PART NUMBER LEGEND

113032K20MXXE

MC 3P FEMALE STRAIGHT TO 90 DEG MALE (EXT THD) — OVERMOLD OPTION E= RED

CABLE TYPE: 14 AWG TC ER, BLACK — FINISHED LENGTH: M001= .1M, M010= 1.0M, M100= 10.0M

12	2	WARNING LABEL	VINYL	BLACK/YELLOW
11	1	WRAP LABEL	VINYL	BLACK/YELLOW
10	1	90 DEG OVERMOLD	PVC	RED
9	1	MALE COUPLING NUT	ZINC ALLOY	BLACK
8	3	CONTACT PIN	Cu ALLOY	GOLD PLATE
7	1	MALE INSERT	PVC	BLACK
6	1	STRAIGHT OVERMOLD	PVC	RED
5	1	FRICITION RING	NYLON	WHITE
4	1	FEMALE COUPLING NUT	ZINC ALLOY	BLACK
3	3	CONTACT SOCKET	Cu ALLOY	GOLD PLATE
2	1	FEMALE INSERT	PVC	BLACK
1	SEE NOTE 5	CABLE	TPE	BLACK
ITEM	QTY	DESCRIPTION	MATERIAL	FINISH

RELEASED	EC NO: IPG2016-0693	2015/11/10
DRWRNSTONE	2015/11/20	
CHKDK JOZWIK	2015/11/20	
APPR: BWOODMAN	2015/12/04	
REV	DESCRIPTION	DATE
A		

QUALITY SYMBOLS	▽=0	▽=0
GENERAL TOLERANCES (UNLESS SPECIFIED)	mm	INCH
4 PLACES ± --- ± ---		
3 PLACES ± --- ± ---		
2 PLACES ± --- ± .01		
1 PLACE ± 0.3 ± ---		
0 PLACE ± --- ± ---		
ANGULAR ± 1 °		
DRAFT WHERE APPLICABLE MUST REMAIN WITHIN DIMENSIONS		

DIMENSION STYLE		IN/MM
DRAWN BY	DATE	
RSTONE	2015/11/10	
CHECKED BY	DATE	
KJOZWIK	2015/11/20	
APPROVED BY	DATE	
BWOODMAN	2015/12/04	
MATERIAL NO.	-	

SCALE	1:1	DESIGN UNITS	INCH	THIRD ANGLE PROJECTION	
TITLE	MINI CHANGE CABLE ASSY FEM STR. TO 90 DEG MALE EXTERNAL THREAD, RED				
molex					
DOCUMENT NO.	SD-130062-025		SHEET NO.	1 OF 1	
THIS DRAWING CONTAINS INFORMATION THAT IS PROPRIETARY TO MOLEX INCORPORATED AND SHOULD NOT BE USED WITHOUT WRITTEN PERMISSION					

Mouser Electronics

Authorized Distributor

Click to View Pricing, Inventory, Delivery & Lifecycle Information:

[Molex:](#)

[1300621039](#)