

PLEASE CHECK WWW.MOLEX.COM FOR LATEST PART INFORMATION

Part Number: [0988171048](#)
Status: **Active**
Overview: NSCC - New Standard Casing Contact
Description: NSCC Single Part, Unsealed, 1.50mm, Female Housing, 3.33mm Pitch NSCC, Wire-to-Wire, 4 Circuits, Gray

Documents:

3D Model	Application Specification 988210001-PS-CH-001 (PDF)
Drawing (PDF)	Application Specification AS-98821-001-001 (PDF)
Product Specification PS-98821-001-001 (PDF)	Packaging Specification PK-31301-635-001 (PDF)
Application Specification 988210001-AS-CH-001 (PDF)	RoHS Certificate of Compliance (PDF)

Application tooling part link

Application Tooling Part Link 63813-3800

General

Product Family	Crimp Housings
Series	98817
Application	Power, Wire-to-Wire
Overview	NSCC - New Standard Casing Contact
Product Name	NSCC
UPC	822350005579

Physical

Circuits (maximum)	4
Circuits Detail	4 x 1.5mm female terminals
Color - Resin	Gray
Gender	Receptacle
Glow-Wire Capable	No
Keying to Mating Part	Yes
Lock to Mating Part	Yes
Material - Resin	Polyester
Net Weight	2.600/g
Number of Rows	1
Packaging Type	Carton
Panel Mount	No
Pitch - Mating Interface	3.33mm
Pitch - Termination Interface	3.33mm
Polarized to Mating Part	Yes
Ports	1
Temperature Range - Operating	-40° to +100°C

Electrical

Current - Maximum per Contact 10.0A

Solder Process Data

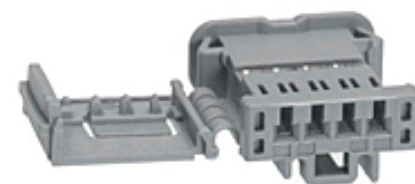
Lead-free Process Capability N/A

Material Info

Engineering Number 010208328

Reference - Drawing Numbers

Application Specification	988210001-AS-CH-001, 988210001-PS-CH-001, AS-98821-001-001
Packaging Specification	PK-31301-635-001
Product Specification	PS-98821-001-001



Series image - Reference only

EU ELV

Compliant

EU RoHS

Compliant

REACH SVHC

Not Contained Per - D(2021)4569-DC (8 July 2021)

Halogen-Free

Status

Not Relevant

For more information, please visit [Contact US](#)

China ROHS

ELV

RoHS Phthalates

China RoHS

Not Relevant

Compliant

Not Contained

Search Parts in this Series

[98817](#) Series

Mates With

[988221048](#) Male Receptacle Housing

Use With

Female Terminal [NSCC 988971109](#) , [988971119](#) , [988971129](#) or FCI Female Terminal 1.5 Sicma 3

Application Tooling | [FAQ](#)

Tooling specifications and manuals are found by selecting the products below. Crimp Height Specifications are then contained in the Application Tooling Specification document.

Global

Description	Product #
Extractor Tool for Unsealed Receptacle Connectors	638133800

This document was generated on 10/06/2021

PLEASE CHECK WWW.MOLEX.COM FOR LATEST PART INFORMATION

Mouser Electronics

Authorized Distributor

Click to View Pricing, Inventory, Delivery & Lifecycle Information:

[Molex:](#)

[98817-1048](#)