

2589-ID-10

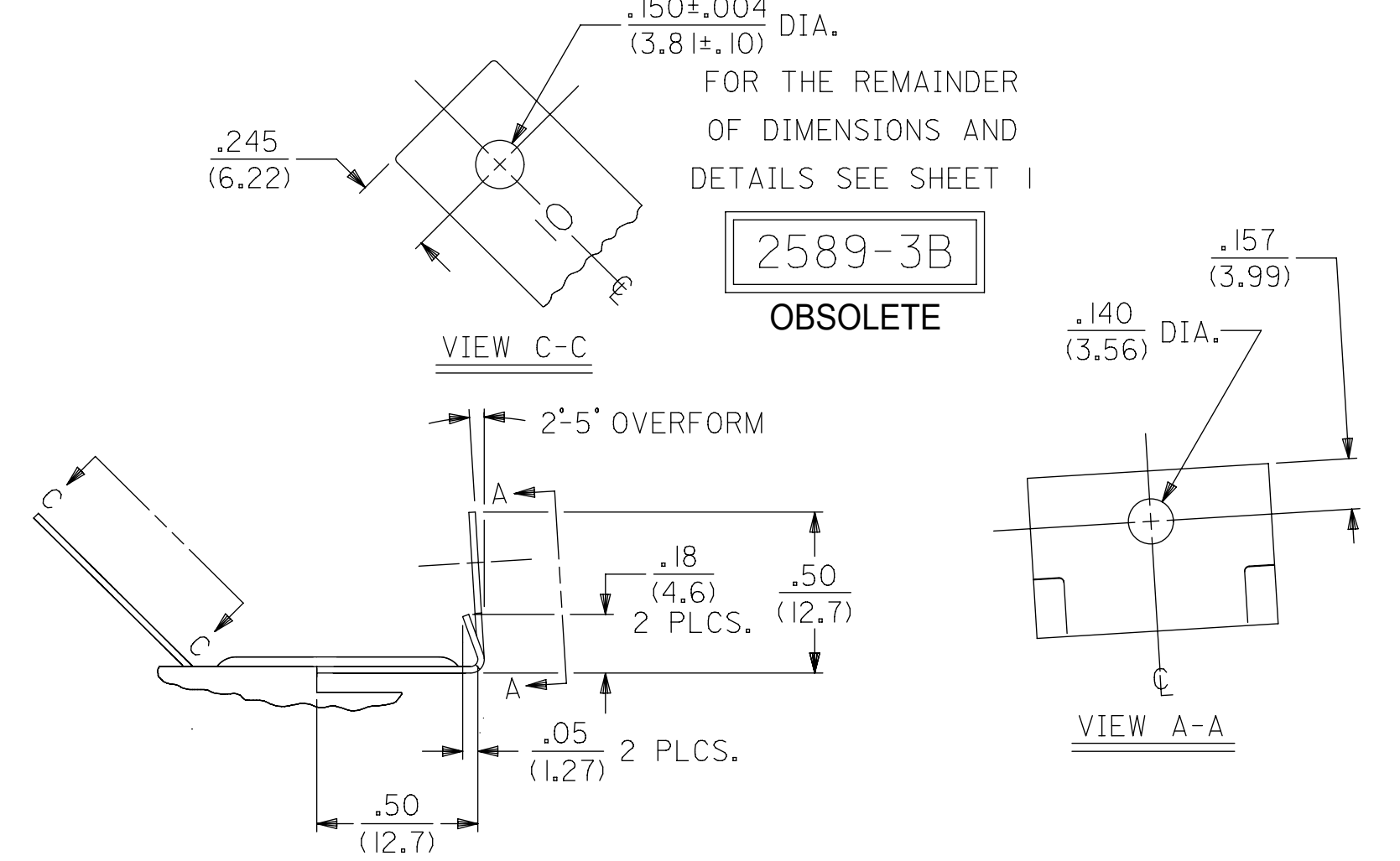
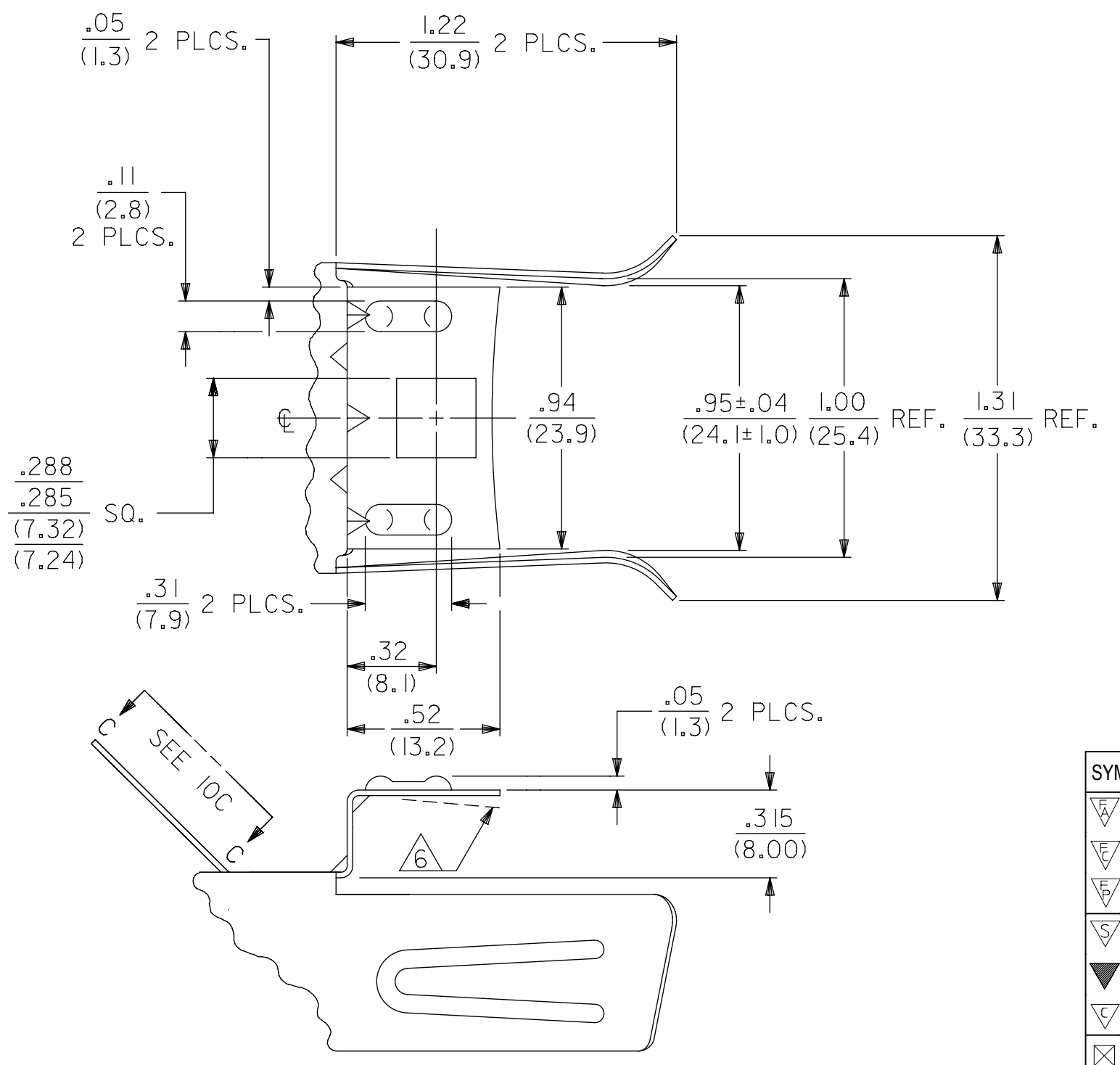
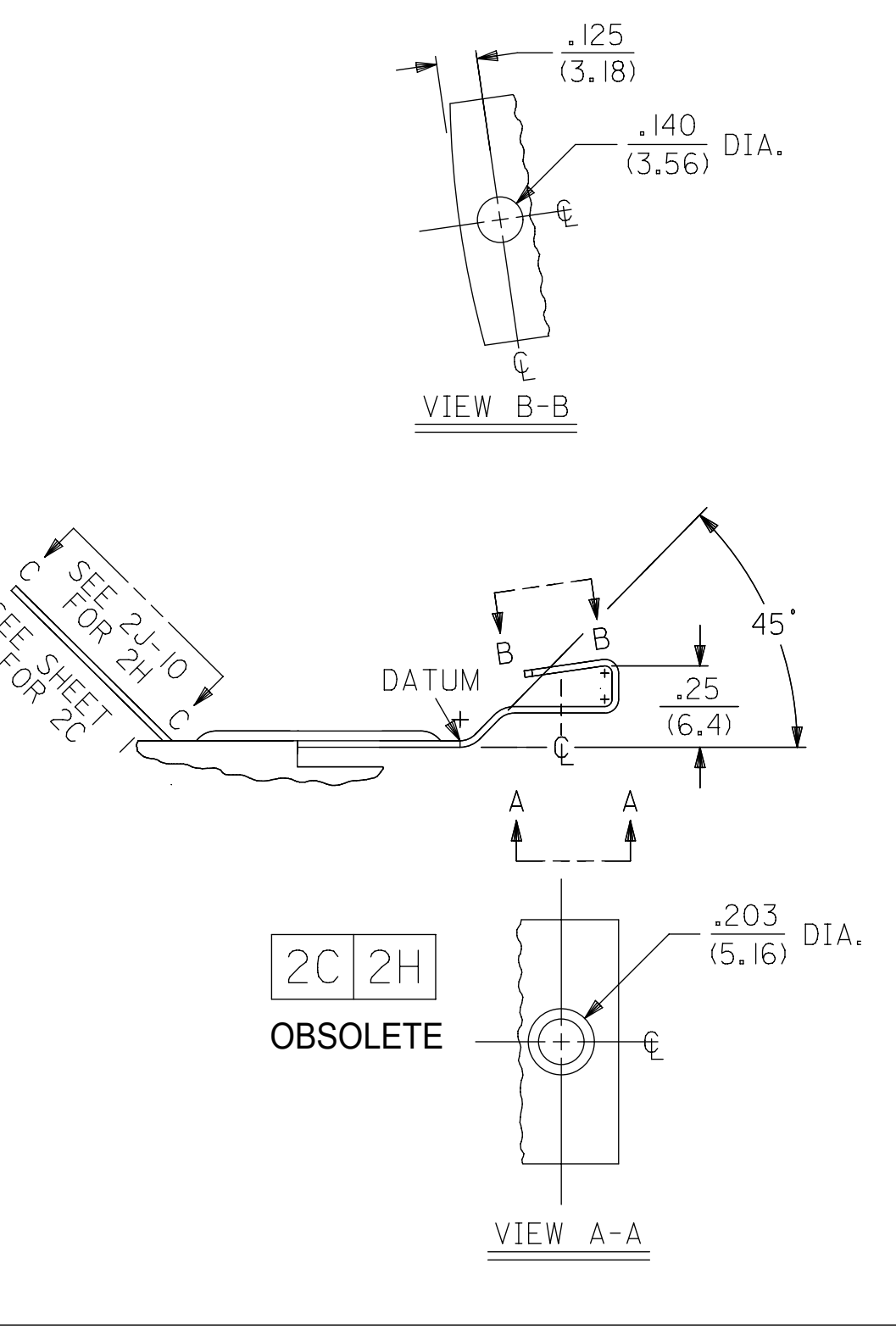
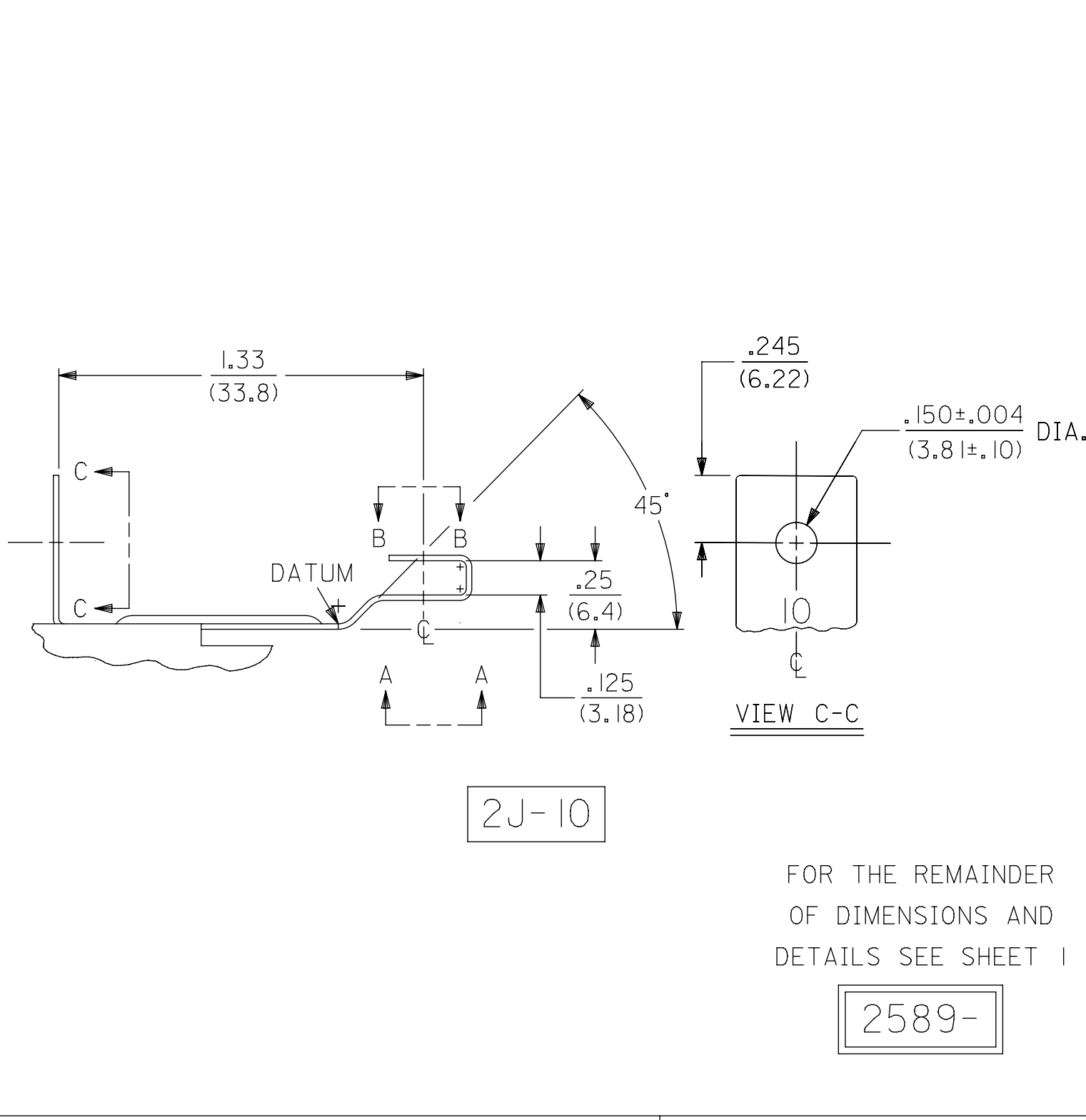
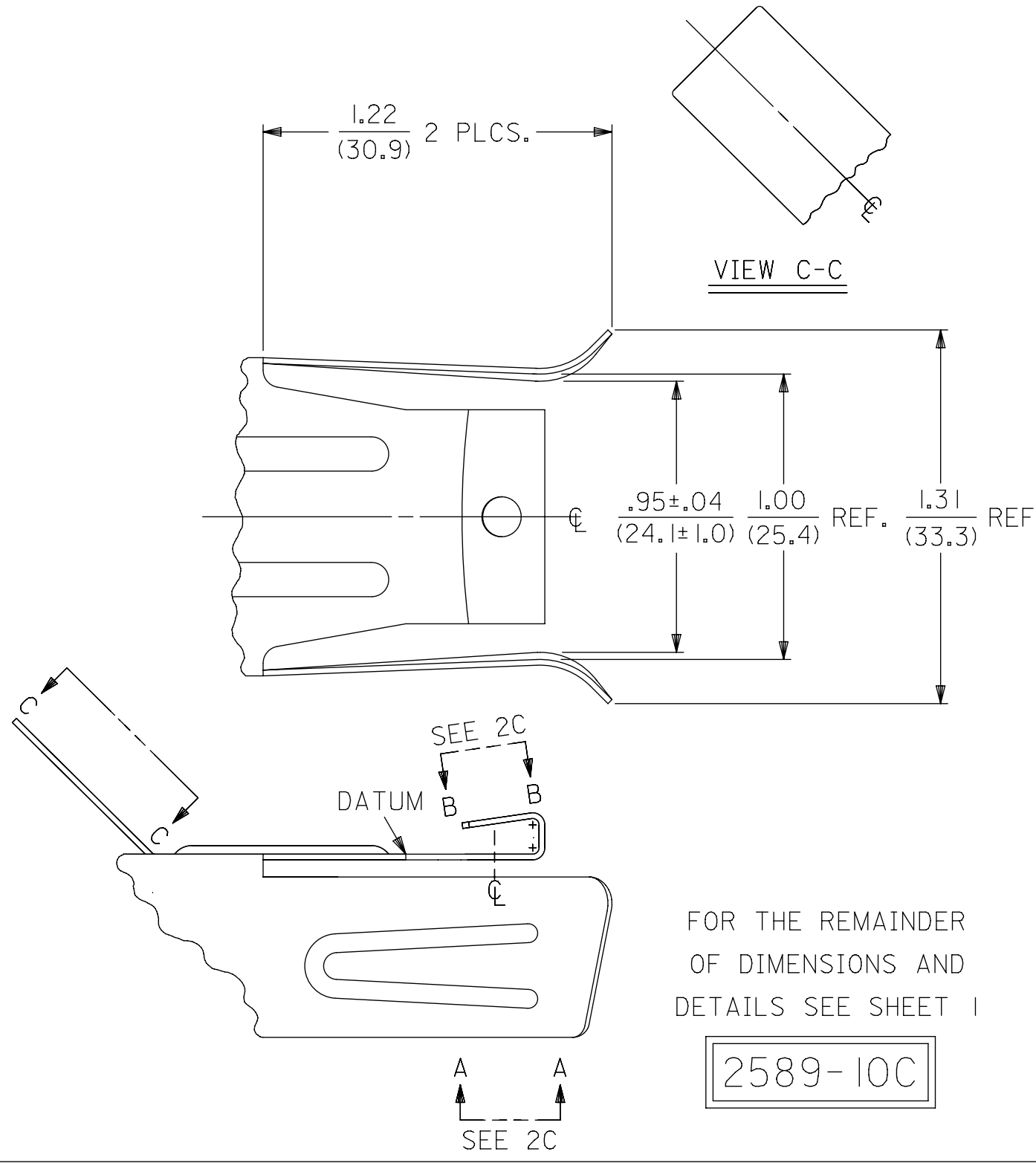
NOTES:

1. THESE MOUNTING CLIPS ARE FOR HOLDING THE 2481 SERIES HOUSINGS TO THE MAIN PANEL TOPS OF ELECTRIC RANGES.
2. SCREW SIZE INDICATION.
3. .015/(.38) MAXIMUM CUT OFF.
4. .010/(.25) MAXIMUM MISMATCH.
5. THREAD FORM FOR A #10-32 SCREW.
6. THIS SURFACE MAY BE FORMED IN THIS DIRECTION A MAXIMUM OF 5°.

MATERIAL:

STEEL, STAINLESS, TYPE 301, .020/(.51) THICK.

THIS DRAWING CONTAINS INFORMATION THAT IS PROPRIETARY TO MOLEX ELECTRONIC TECHNOLOGIES, LLC AND SHOULD NOT BE USED WITHOUT WRITTEN PERMISSION									
SYMBOLS		DIMENSION UNITS		SCALE		CURRENT REV DESC: IMPORT TO NX			
∇ = 0	IN/MM	2:1		EC NO: 608062 DRWN: SALHAMY 2018/11/21 CHK'D: MKIPPER 2018/11/21 APPR: FSMITH 2018/11/21 INITIAL REVISION: DRWN: RHR 11/20/92 APPR: RAS 11/20/92					
∇ = 0	GENERAL TOLERANCES (UNLESS SPECIFIED)								
∇ = 0	MM	INCH							
∇ = 0	4 PLACES	±	±						
∇ = 0	3 PLACES	±	0.01 ±						
∇ = 0	2 PLACES	±	0.014 ± 0.25						
∇ = 0	1 PLACE	±	± 0.35						
∇ = 0	0 PLACES	±	±						
∇ = 0	ANGULAR TOL		± 0.5°	THIRD ANGLE PROJECTION					
∇ = 0	DRAFT WHERE APPLICABLE MUST REMAIN WITHIN DIMENSIONS			DRAWING		SERIES		MATERIAL NUMBER	
				C-SIZE		2589		SEE CHART	
				DOCUMENT NUMBER		DOC TYPE		DOC PART	
				SD-2589-X		PSD		001	
				CUSTOMER		GENERAL MARKET		SHEET NUMBER	
								1 OF 3	



SYMBOLS		THIS DRAWING CONTAINS INFORMATION THAT IS PROPRIETARY TO MOLEX ELECTRONIC TECHNOLOGIES, LLC AND SHOULD NOT BE USED WITHOUT WRITTEN PERMISSION		CURRENT REV DESC: IMPORT TO NX	
∇ = 0	IN/MM	SCALE	2:1		
∇ = 0	GENERAL TOLERANCES (UNLESS SPECIFIED)		EC NO: 608062		
∇ = 0	MM	INCH	DRWN: SALHAMY	2018/11/21	MATERIAL NUMBER
∇ = 0	4 PLACES ±	±	CHK'D: MKIPPER	2018/11/21	
∇ = 0	3 PLACES ±	0.01 ±	APPR: FSMITH	2018/11/21	SERIES
∇ = 0	2 PLACES ±	0.014 ±	INITIAL REVISION:		
∇ = 0	1 PLACE ±	± 0.35	DRWN: RHR	11/20/92	DOCUMENT NUMBER
∇ = 0	0 PLACES ±	±	APPR: RAS	11/20/92	
∇ = 0	ANGULAR TOL	± 0.5°	THIRD ANGLE PROJECTION		DOC PART
∇ = 0	DRAFT WHERE APPLICABLE MUST REMAIN WITHIN DIMENSIONS		DRAWING	C-SIZE	
∇ = 0			SERIES	2589	

molex

MOUNTING CLIP

PRODUCT CUSTOMER DRAWING

DOCUMENT NUMBER: SD-2589-X

DOC TYPE: PSD

DOC PART: 001

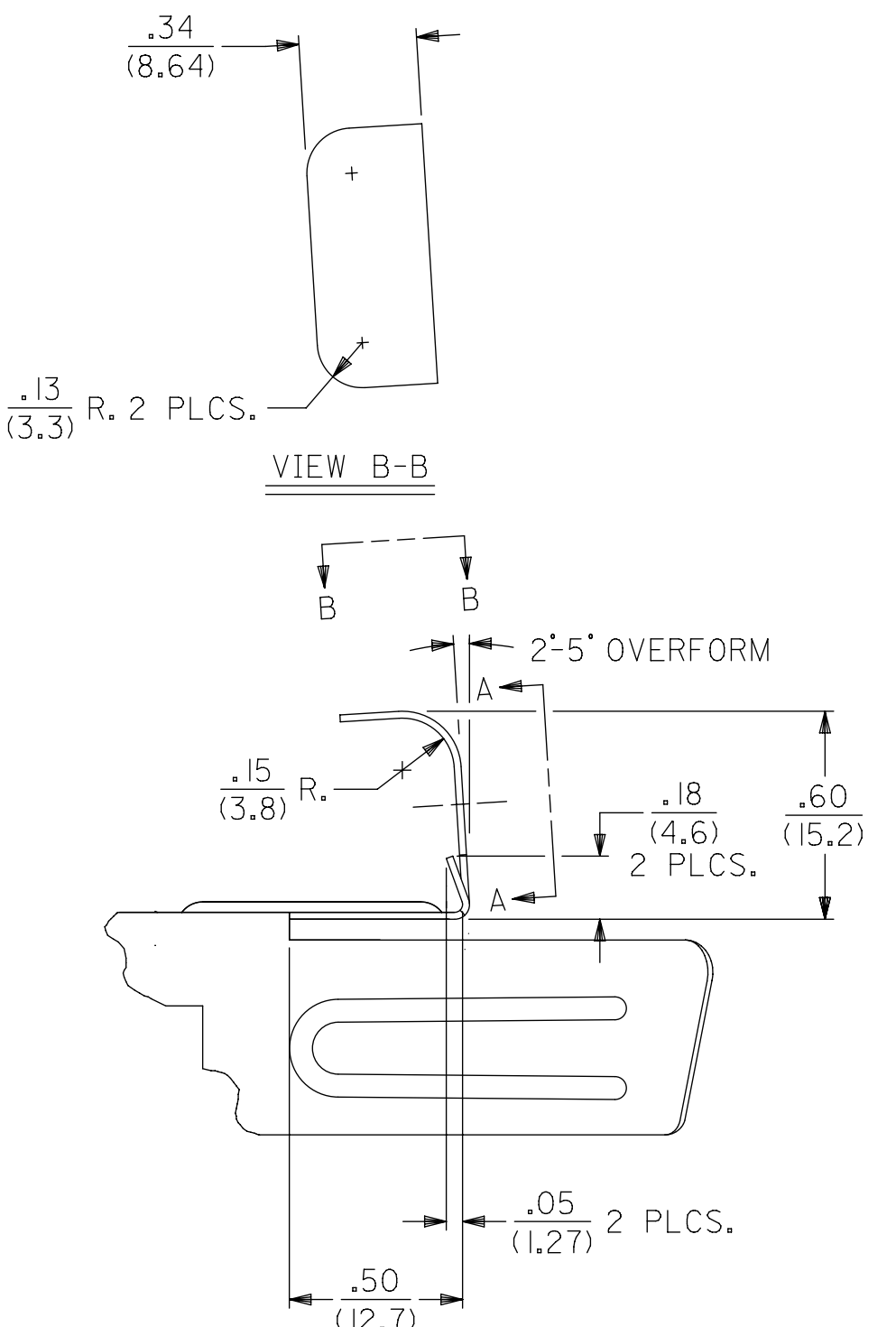
REVISION: AD1

MATERIAL NUMBER: SEE CHART

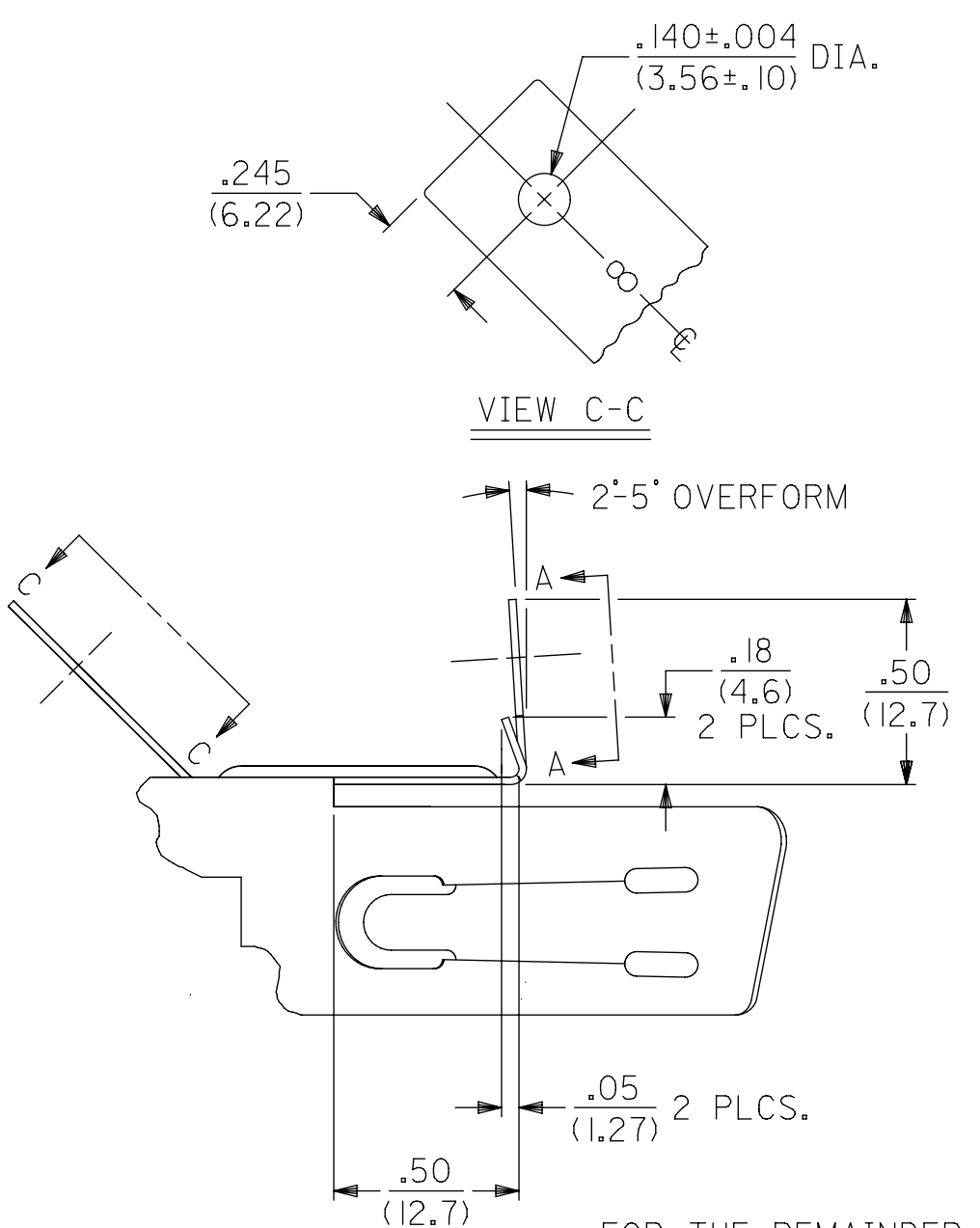
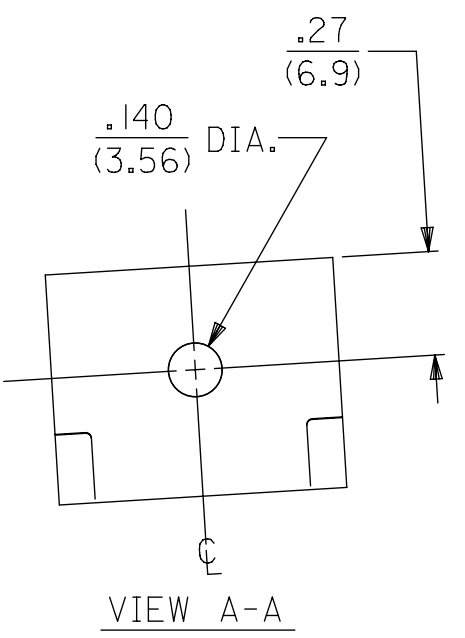
CUSTOMER: GENERAL MARKET

SHEET NUMBER: 2 OF 3

PART NO.	ENG. NO.	DIMENSION	
		A	
089-00-2006	2589-ID-10	.48±.025 (12.2±.64)	
089-00-2027	2589-2J-10	.562±.025 (14.27±.64)	
089-00-2047	2589-6F	.375±.015 (9.53±.38)	
089-00-2100	2589-10C	.48±.025 (12.2±.64)	
089-00-2103	2589-23	.62±.025 (15.7±.64)	

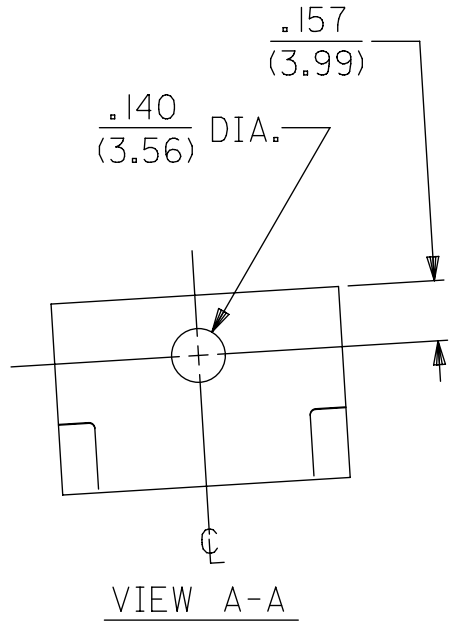


FOR THE REMAINDER
OF DIMENSIONS AND
DETAILS SEE SHEET 1
2589-23



FOR THE REMAINDER
OF DIMENSIONS AND
DETAILS SEE SHEET 1

2589-21A OBSOLETE



SYMBOLS										THIS DRAWING CONTAINS INFORMATION THAT IS PROPRIETARY TO MOLEX ELECTRONIC TECHNOLOGIES, LLC AND SHOULD NOT BE USED WITHOUT WRITTEN PERMISSION									
▽ = 0	▽ = 0	▽ = 0	▽ = 0	▽ = 0	▽ = 0	▽ = 0	▽ = 0	▽ = 0	▽ = 0	IN/MM	SCALE	CURRENT REV DESC: IMPORT TO NX							
▽ = 0	▽ = 0	▽ = 0	▽ = 0	▽ = 0	▽ = 0	▽ = 0	▽ = 0	▽ = 0	▽ = 0	1:1		molex MOUNTING CLIP PRODUCT CUSTOMER DRAWING							
▽ = 0	▽ = 0	▽ = 0	▽ = 0	▽ = 0	▽ = 0	▽ = 0	▽ = 0	▽ = 0	▽ = 0	GENERAL TOLERANCES (UNLESS SPECIFIED)									
▽ = 0	▽ = 0	▽ = 0	▽ = 0	▽ = 0	▽ = 0	▽ = 0	▽ = 0	▽ = 0	▽ = 0	MM	INCH	EC NO: 608062 DRWN: SALHAMY 2018/11/21 CHK'D: MKIPPER 2018/11/21 APPR: FSMITH 2018/11/21 INITIAL REVISION: DRWN: RHR 11/20/92 APPR: RAS 11/20/92							
▽ = 0	▽ = 0	▽ = 0	▽ = 0	▽ = 0	▽ = 0	▽ = 0	▽ = 0	▽ = 0	▽ = 0	4 PLACES ±	±	DOCUMENT NUMBER SD-2589-X							
▽ = 0	▽ = 0	▽ = 0	▽ = 0	▽ = 0	▽ = 0	▽ = 0	▽ = 0	▽ = 0	▽ = 0	3 PLACES ±	± 0.01	DOC TYPE DOC PART REVISION PSD 001 AD1							
▽ = 0	▽ = 0	▽ = 0	▽ = 0	▽ = 0	▽ = 0	▽ = 0	▽ = 0	▽ = 0	▽ = 0	2 PLACES ±	± 0.014 ± 0.25	MATERIAL NUMBER CUSTOMER SHEET NUMBER SEE CHART GENERAL MARKET 3 OF 3							
▽ = 0	▽ = 0	▽ = 0	▽ = 0	▽ = 0	▽ = 0	▽ = 0	▽ = 0	▽ = 0	▽ = 0	1 PLACE ±	± 0.35	THIRD ANGLE PROJECTION DRAWING SERIES C-SIZE 2589							
▽ = 0	▽ = 0	▽ = 0	▽ = 0	▽ = 0	▽ = 0	▽ = 0	▽ = 0	▽ = 0	▽ = 0	0 PLACES ±	±	DRAFT WHERE APPLICABLE MUST REMAIN WITHIN DIMENSIONS							
▽ = 0	▽ = 0	▽ = 0	▽ = 0	▽ = 0	▽ = 0	▽ = 0	▽ = 0	▽ = 0	▽ = 0	ANGULAR TOL ±	± 0.5 °								

Mouser Electronics

Authorized Distributor

Click to View Pricing, Inventory, Delivery & Lifecycle Information:

[Molex:](#)

[89-00-2047](#)