

PLEASE CHECK WWW.MOLEX.COM FOR LATEST PART INFORMATION

Part Number: **0766801010**
Status: **Active**
Overview: GbX I-Trac Backplane Connector System
Description: GbX I-Trac NXT Right-Angle Daughtercard Module, 1.85mm by 3.70mm Pitch, Unguided, 11 Rows, 10 Columns, 220 Circuits

Documents:

[Drawing \(PDF\)](#) [Packaging Specification PK-70873-609 \(PDF\)](#)
[Product Specification PS-75710-999-001 \(PDF\)](#) [RoHS Certificate of Compliance \(PDF\)](#)

Agency Certification

UL E29179

General

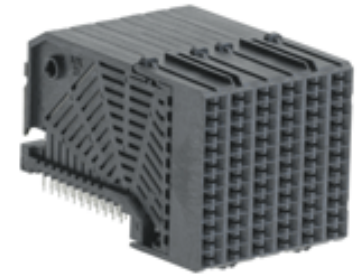
Product Family Backplane Connectors
 Series [76680](#)
 Application Coplanar, Daughtercard
 Component Type PCB Receptacle
 Overview [GbX I-Trac Backplane Connector System](#)
 Product Name GbX I-Trac
 UPC 883906721602

Physical

Circuits (Loaded) 220
 Circuits (maximum) 220
 Color - Resin Black
 Durability (mating cycles max) 200
 First Mate / Last Break No
 Flammability 94V-0
 Guide to Mating Part No
 Keying to Mating Part None
 Material - Metal High Performance Alloy (HPA)
 Material - Plating Mating Gold
 Material - Plating Termination Tin
 Material - Resin High Temperature Thermoplastic
 Net Weight 24.480/g
 Number of Columns 10
 Number of Pairs Open Pin Field
 Number of Rows 11
 Orientation Right Angle
 PC Tail Length 1.30mm
 PCB Locator Yes
 PCB Retention Yes
 PCB Thickness - Recommended 1.00mm
 Packaging Type Tray
 Pitch - Mating Interface 1.85mm, 3.70mm
 Pitch - Termination Interface 1.00mm, 2.70mm
 Plating min - Mating 0.762µm
 Plating min - Termination 0.762µm
 Polarized to PCB Yes
 Stackable Yes
 Surface Mount Compatible (SMC) Yes
 Temperature Range - Operating -55° to +80°C
 Termination Interface: Style Through Hole - Compliant Pin

Electrical

Current - Maximum per Contact 1.0A



Series image - Reference only

EU ELV

Not Relevant

EU RoHS

Compliant

REACH SVHC

Not Contained Per -
 D(2020)4578-DC (25
 June 2020)

**Halogen-Free
 Status**

Low-Halogen

For more information, please visit [Contact US](#)

China ROHS

ELV

RoHS Phthalates

China RoHS

Green Image

Not Relevant

Not Contained

Search Parts in this Series

[76680 Series](#)

Mates With

[757051103 GbX I-Trac Vertical Header](#)

Data Rate	12.0 Gbps
Shield Type	N/A
Shielded	No
Voltage - Maximum	120V AC (RMS)/DC

Material Info

Reference - Drawing Numbers

Packaging Specification	PK-70873-609
Product Specification	PS-75710-999-001
Sales Drawing	SD-76680-001

This document was generated on 08/25/2020

PLEASE CHECK WWW.MOLEX.COM FOR LATEST PART INFORMATION

Mouser Electronics

Authorized Distributor

Click to View Pricing, Inventory, Delivery & Lifecycle Information:

[Molex:](#)

[76680-1010](#)