

PLEASE CHECK WWW.MOLEX.COM FOR LATEST PART INFORMATION

Part Number: [0705430054](#)
Status: **Active**
Overview: [SL Modular Connectors](#)
Description: 2.54mm Pitch SL Header, Single Row, Vertical, 3.05mm Pocket, Shrouded, 20 Circuits, Tin (Sn) Plating

Documents:

3D Model	Product Specification PS-70541-001 (PDF)
Drawing (PDF)	Packaging Specification PK-70873-0014-001 (PDF)
3D Model (PDF)	Test Summary TS-70541-100-001 (PDF)
Product Specification PS-70400-001 (PDF)	RoHS Certificate of Compliance (PDF)

Agency Certification

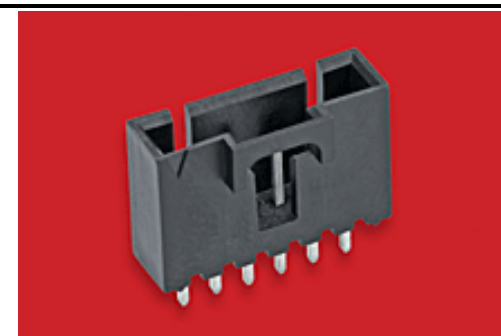
CSA LR19980

General

Product Family	PCB Headers
Series	70543
Application	Signal, Wire-to-Board
Overview	SL Modular Connectors
Product Name	SL
UPC	800755034127

Physical

Breakaway	No
Circuits (Loaded)	20
Circuits (maximum)	20
Color - Resin	Black
Durability (mating cycles max)	25
First Mate / Last Break	No
Flammability	94V-0
Glow-Wire Capable	No
Guide to Mating Part	No
Keying to Mating Part	None
Lock to Mating Part	Yes
Material - Metal	Brass, Phosphor Bronze
Material - Plating Mating	Tin
Material - Plating Termination	Tin
Material - Resin	High Temperature Thermoplastic
Net Weight	3.778/g
Number of Rows	1
Orientation	Vertical
PC Tail Length	3.30mm
PCB Locator	No
PCB Retention	None
PCB Thickness - Recommended	1.60mm
Packaging Type	Tube
Pitch - Mating Interface	2.54mm
Pitch - Termination Interface	2.54mm
Plating min - Mating	3.810µm
Plating min - Termination	3.810µm
Polarized to Mating Part	Yes
Shrouded	Fully
Stackable	No
Surface Mount Compatible (SMC)	No
Temperature Range - Operating	-40° to +105°C
Termination Interface: Style	Through Hole



Series image - Reference only

EU ELV

Not Relevant

EU RoHS

Compliant

REACH SVHC

Not Contained Per -
D(2021)4569-DC (8
July 2021)

Halogen-Free

Status

Not Low-Halogen

For more information, please visit [Contact US](#)

China ROHS

ELV

RoHS Phthalates

China RoHS

Green Image

Not Relevant

Not Contained

Search Parts in this Series

[70543](#) Series

Mates With

SL Crimp Housing [70066](#) Option N, [70066](#) Option G, [70066](#) Option A, [70430](#) Option G, [70400](#) Option G

Electrical

Current - Maximum per Contact
Voltage - Maximum

3.0A
250V

Solder Process Data

Lead-free Process Capability

WAVE

Material Info**Reference - Drawing Numbers**

Packaging Specification
Product Specification
Sales Drawing
Test Summary

PK-70873-0014-001
PS-70400-001, PS-70541-001
SDA-70543-XXXX-001
TS-70541-100-001

This document was generated on 09/14/2021

PLEASE CHECK WWW.MOLEX.COM FOR LATEST PART INFORMATION

Mouser Electronics

Authorized Distributor

Click to View Pricing, Inventory, Delivery & Lifecycle Information:

[Molex:](#)

[70543-0054](#)