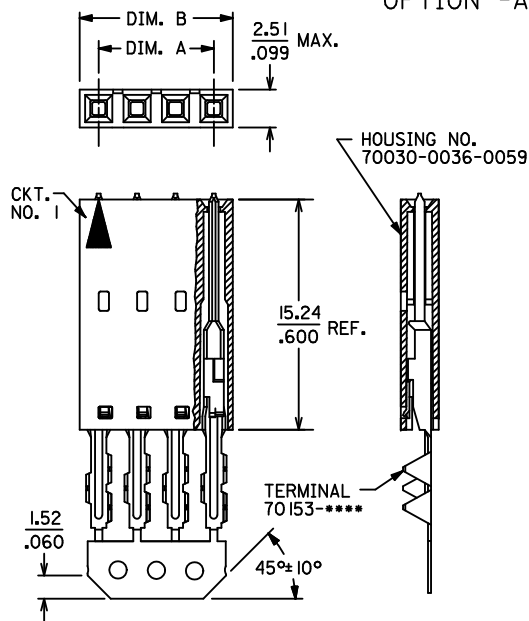
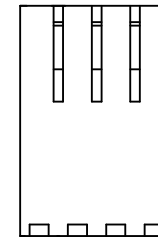
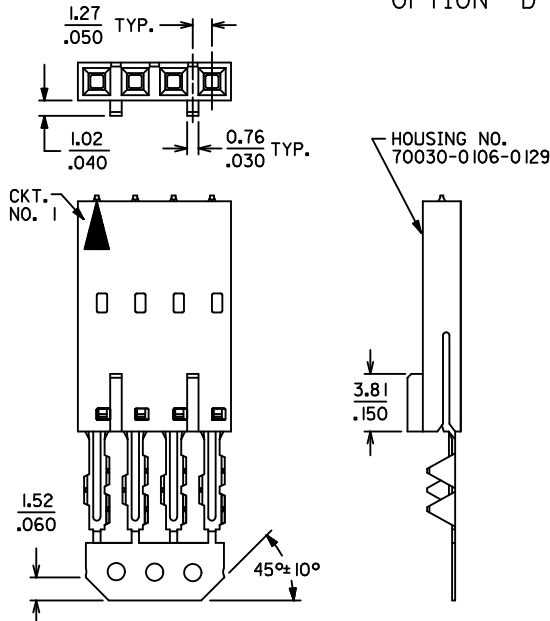


OPTION -A-

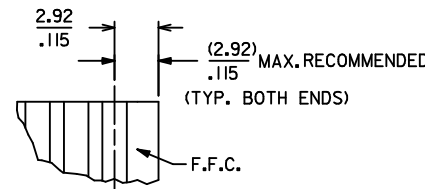
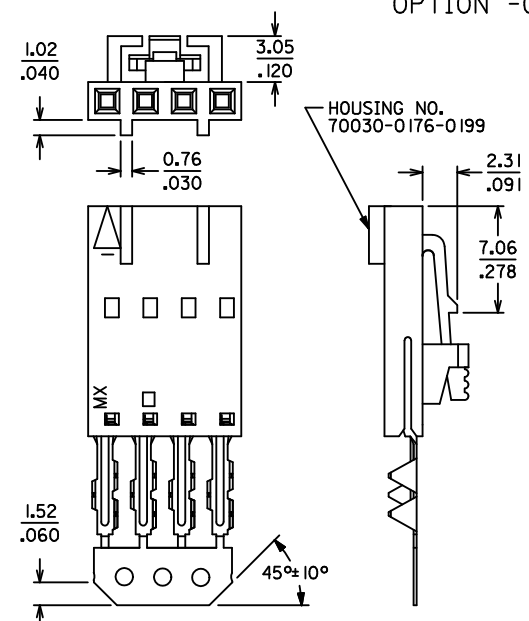


OPTION -D-



OPTIONAL CORE-OUT FOR
HOUSING OPTIONS A & D
CKT. SIZES 2-25
(FOR CONTROL OF BOW)

OPTION -G-



- NOTES:
- HOUSING: POLYESTER (PBT), UL94 V-0
COLOR: BLACK
 - FINISHES:
SEE PAGE 2 FOR PLATING FINISHES
 - PRODUCT SPECIFICATION: PS-70430
 - PACKAGING SPECIFICATION: PK-70873-0001
 - SEE CHART FOR CIRCUIT SIZES
 - TERMINALS ARE SHOWN PRE-LOADED INTO HOUSING
AND LOCKED INTO FIRST ROW OF LOCKING TANG
WINDOWS
 - ALL DIMENSIONS ARE FOR REFERENCE ONLY
 - SEE SHEET 2 FOR PART NUMBERS AND PLATINGS

CKT. SIZE	DIM. A (MAX.)	DIM. B (MAX.)
2	(2.54) .100	(5.05) .199
3	(5.08) .200	(7.59) .299
4	(7.62) .300	(10.13) .399
5	(10.16) .400	(12.67) .499
6	(12.70) .500	(15.21) .599
7	(15.24) .600	(17.75) .699
8	(17.78) .700	(20.29) .799
9	(20.32) .800	(22.83) .899
10	(22.86) .900	(25.37) .999
11	(25.40) 1.000	(27.91) 1.099
12	(27.94) 1.100	(30.45) 1.199
13	(30.48) 1.200	(32.99) 1.299
14	(33.02) 1.300	(35.53) 1.399
15	(35.56) 1.400	(38.07) 1.499
16	(38.10) 1.500	(40.61) 1.599
17	(40.64) 1.600	(43.15) 1.699
18	(43.18) 1.700	(45.69) 1.799
19	(45.72) 1.800	(48.23) 1.899
20	(48.26) 1.900	(50.77) 1.999
21	(50.80) 2.000	(53.31) 2.099
22	(53.34) 2.100	(55.85) 2.199
23	(55.88) 2.200	(58.39) 2.299
24	(58.42) 2.300	(60.93) 2.399
25	(60.96) 2.400	(63.47) 2.499

MODIFY PRODUCT SPEC EC NO: UCP2010-0987 DRWN:MSIBARRA 2009/12/28 CHKD:DMORGAN 2010/01/08 APPR:SMILLER 2010/01/11	DESCRIPTION	QUALITY SYMBOLS <div>▽=0</div> <div>▽=0</div> <div>▽=0</div>	GENERAL TOLERANCES (UNLESS SPECIFIED)		DIMENSION STYLE MM/IN		SCALE 4:1	DESIGN UNITS INCH	THIRD ANGLE PROJECTION			
				mm	INCH	DRAWN BY MGB	DATE 12/21/88	TITLE ASSY, SL CONNECTOR, FFC MALE, SINGLE ROW 2.54/.100 GRID				
			4 PLACES	±---	±---	CHECKED BY	DATE					
			3 PLACES	±---	±---	MGB	12/21/88					
			2 PLACES	±---	±---	APPROVED BY	DATE	MOLEX MOLEX INCORPORATED				
			1 PLACE	±---	±---	WAZ	12/21/88					
			ANGULAR ±1/2°			MATERIAL NO.		DOCUMENT NO.		SHEET NO.		
			DRAFT WHERE APPLICABLE MUST REMAIN WITHIN DIMENSIONS			SEE TABLE		SDA-70431-****		1 OF 2		
						SIZE		THIS DRAWING CONTAINS INFORMATION THAT IS PROPRIETARY TO MOLEX INCORPORATED AND SHOULD NOT BE USED WITHOUT WRITTEN PERMISSION				
						C						

	13	12	11	10	9	8	7	6	5	4	3	2	1																																																			
J	CKT. SIZE	TIN PLATE OPTION -A-		TIN PLATE OPTION -D-		15 GOLD PLATE OPTION -A-		15 GOLD PLATE OPTION -D-		30 GOLD PLATE OPTION -A-		30 GOLD PLATE OPTION -D-		TIN PLATE OPTION -G-																																																		
		EDP. NO.	ENG. NO.	EDP. NO.	ENG. NO.	EDP. NO.	ENG. NO.	EDP. NO.	ENG. NO.	EDP. NO.	ENG. NO.	EDP. NO.	ENG. NO.	EDP. NO.	ENG. NO.																																																	
	2	I5-38-9020	A-70431-0001	I5-38-9022	A-70431-0071	I5-47-4028	A-70431-0176	I5-47-5020	A-70431-0246	I5-47-5022	A-70431-0351	I5-47-5024	A-70431-0421																																																			
	3	-9030	-0002	-9032	-0072	-4038	-0177	-5030	-0247	-5032	-0352	-5034	-0422																																																			
	4	-9040	-0003	-9042	-0073	-4048	-0178	-5040	-0248	-5042	-0353	-5044	-0423																																																			
I	5	-9050	-0004	-9052	-0074	-4058	-0179	-5050	-0249	-5052	-0354	-5054	-0424																																																			
	6	-9060	-0005	-9062	-0075	-4068	-0180	-5060	-0250	-5062	-0355	-5064	-0425																																																			
	7	-9070	-0006	-9072	-0076	-4078	-0181	-5070	-0251	-5072	-0356	-5074	-0426																																																			
	8	-9080	-0007	-9082	-0077	-4088	-0182	-5080	-0252	-5082	-0357	-5084	-0427																																																			
	9	-9090	-0008	-9092	-0078	-4098	-0183	-5090	-0253	-5092	-0358	-5094	-0428																																																			
	10	-9100	-0009	-9102	-0079	-4108	-0184	-5100	-0254	-5102	-0359	-5104	-0429	I5-38-9103	A-70431-0149																																																	
	11	-9110	-0010	-9112	-0080	-4118	-0185	-5110	-0255	-5112	-0360	-5114	-0430																																																			
H	12	-9120	-0011	-9122	-0081	-4128	-0186	-5120	-0256	-5122	-0361	-5124	-0431																																																			
	13	-9130	-0012	-9132	-0082	-4138	-0187	-5130	-0257	-5132	-0362	-5134	-0432																																																			
	14	-9140	-0013	-9142	-0083	-4148	-0188	-5140	-0258	-5142	-0363	-5144	-0433																																																			
	15	-9150	-0014	-9152	-0084	-4158	-0189	-5150	-0259	-5152	-0364	-5154	-0434																																																			
	16	-9160	-0015	-9162	-0085	-4168	-0190	-5160	-0260	-5162	-0365	-5164	-0435																																																			
	17	-9170	-0016	-9172	-0086	-4178	-0191	-5170	-0261	-5172	-0366	-5174	-0436																																																			
G	18	-9180	-0017	-9182	-0087	-4188	-0192	-5180	-0262	-5182	-0367	-5184	-0437																																																			
	19	-9190	-0018	-9192	-0088	-4198	-0193	-5190	-0263	-5192	-0368	-5194	-0438																																																			
	20	-9200	-0019	-9202	-0089	-4208	-0194	-5200	-0264	-5202	-0369	-5204	-0439																																																			
	21	-9210	-0020	-9212	-0090	-4218	-0195	-5210	-0265	-5212	-0370	-5214	-0440																																																			
	22	-9220	-0021	-9222	-0091	-4228	-0196	-5220	-0266	-5222	-0371	-5224	-0441																																																			
	23	-9230	-0022	-9232	-0092	-4238	-0197	-5230	-0267	-5232	-0372	-5234	-0442																																																			
	24	-9240	-0023	-9242	-0093	-4248	-0198	-5240	-0268	-5242	-0373	-5244	-0443																																																			
F	25	I5-38-9250	A-70431-0024	I5-38-9252	A-70431-0094	I5-47-4258	A-70431-0199	I5-47-5250	A-70431-0269	I5-47-5252	A-70431-0374	I5-47-5254	A-70431-0444																																																			
<table><tr><td>PLATING PER ES-88:</td><td>CARRIER STRIP COLOR CODE</td></tr><tr><td>TIN</td><td>NONE</td></tr><tr><td>15 GOLD</td><td>YELLOW</td></tr><tr><td>30 GOLD</td><td>RED</td></tr></table> <p>PLATING CHART PER ES-88-***</p> <p>TIN: TIN OVERALL THICKNESS: 3.81 MICROMETERS (150 MICROINCHES) MINIMUM ALL OVER A NICKEL UNDERPLATE.</p> <p>15 GOLD: SELECTIVE GOLD (Au) WITH SELECTIVE TIN THICKNESS: 0.38 MICROMETERS (15 MICROINCHES) MINIMUM GOLD (Au) IN SELECT AREA 1.90 MICROMETERS (75 MICROINCHES) MINIMUM TIN IN SELECT AREA ALL OVER A NICKEL UNDERPLATE.</p> <p>30 GOLD: SELECTIVE GOLD (Au) WITH SELECTIVE TIN THICKNESS: 0.76 MICROMETERS (30 MICROINCHES) MINIMUM GOLD (Au) IN SELECT AREA 1.90 MICROMETERS (75 MICROINCHES) MINIMUM TIN IN SELECT AREA ALL OVER A NICKEL UNDERPLATE.</p>																PLATING PER ES-88:	CARRIER STRIP COLOR CODE	TIN	NONE	15 GOLD	YELLOW	30 GOLD	RED	E																																								
PLATING PER ES-88:	CARRIER STRIP COLOR CODE																																																															
TIN	NONE																																																															
15 GOLD	YELLOW																																																															
30 GOLD	RED																																																															
D	<table><tr><td rowspan="6">SEE SHEET 1 EC NO: UCP2010-0987 DRAWN:MS BARRA 2009/12/28 CHKD:DMORGAN 2010/01/08 APPR:SMILLER 2010/01/11</td><td rowspan="6">QUALITY SYMBOLS ▽=0 ▽=0 ▽=0</td><td colspan="2">GENERAL TOLERANCES (UNLESS SPECIFIED)</td><td colspan="2">DIMENSION STYLE MM/IN</td><td>SCALE 1:1</td><td>DESIGN UNITS INCH</td><td colspan="2" rowspan="4">THIRD ANGLE PROJECTION</td><td colspan="5" rowspan="4">ASSY, SL CONNECTOR, FFC MALE, SINGLE ROW 2.54/.100 GRID MOLEX INCORPORATED</td></tr><tr><td>mm</td><td>INCH</td><td>DRAWN BY MGB</td><td>DATE 12/21/88</td></tr><tr><td>4 PLACES ± ---</td><td>± ---</td><td>CHECKED BY MGB</td><td>DATE 12/21/88</td></tr><tr><td>3 PLACES ± ---</td><td>± ---</td><td>APPROVED BY WAZ</td><td>DATE 12/21/88</td></tr><tr><td>2 PLACES ± ---</td><td>± ---</td><td colspan="2">ANGULAR ±1/2°</td><td colspan="2">MATERIAL NO. SEE TABLE</td><td colspan="2">DOCUMENT NO. SDA-70431-****</td><td colspan="2">SHEET NO. 2 OF 2</td></tr><tr><td>1 PLACE ± ---</td><td>± ---</td><td colspan="2">DRAFT WHERE APPLICABLE MUST REMAIN WITHIN DIMENSIONS</td><td colspan="2">SIZE C</td><td colspan="5">THIS DRAWING CONTAINS INFORMATION THAT IS PROPRIETARY TO MOLEX INCORPORATED AND SHOULD NOT BE USED WITHOUT WRITTEN PERMISSION</td></tr></table>															SEE SHEET 1 EC NO: UCP2010-0987 DRAWN:MS BARRA 2009/12/28 CHKD:DMORGAN 2010/01/08 APPR:SMILLER 2010/01/11	QUALITY SYMBOLS ▽=0 ▽=0 ▽=0	GENERAL TOLERANCES (UNLESS SPECIFIED)		DIMENSION STYLE MM/IN		SCALE 1:1	DESIGN UNITS INCH	THIRD ANGLE PROJECTION		ASSY, SL CONNECTOR, FFC MALE, SINGLE ROW 2.54/.100 GRID MOLEX INCORPORATED					mm	INCH	DRAWN BY MGB	DATE 12/21/88	4 PLACES ± ---	± ---	CHECKED BY MGB	DATE 12/21/88	3 PLACES ± ---	± ---	APPROVED BY WAZ	DATE 12/21/88	2 PLACES ± ---	± ---	ANGULAR ±1/2°		MATERIAL NO. SEE TABLE		DOCUMENT NO. SDA-70431-****		SHEET NO. 2 OF 2		1 PLACE ± ---	± ---	DRAFT WHERE APPLICABLE MUST REMAIN WITHIN DIMENSIONS		SIZE C		THIS DRAWING CONTAINS INFORMATION THAT IS PROPRIETARY TO MOLEX INCORPORATED AND SHOULD NOT BE USED WITHOUT WRITTEN PERMISSION					C
SEE SHEET 1 EC NO: UCP2010-0987 DRAWN:MS BARRA 2009/12/28 CHKD:DMORGAN 2010/01/08 APPR:SMILLER 2010/01/11	QUALITY SYMBOLS ▽=0 ▽=0 ▽=0	GENERAL TOLERANCES (UNLESS SPECIFIED)		DIMENSION STYLE MM/IN		SCALE 1:1	DESIGN UNITS INCH	THIRD ANGLE PROJECTION		ASSY, SL CONNECTOR, FFC MALE, SINGLE ROW 2.54/.100 GRID MOLEX INCORPORATED																																																						
		mm	INCH	DRAWN BY MGB	DATE 12/21/88																																																											
		4 PLACES ± ---	± ---	CHECKED BY MGB	DATE 12/21/88																																																											
		3 PLACES ± ---	± ---	APPROVED BY WAZ	DATE 12/21/88																																																											
		2 PLACES ± ---	± ---	ANGULAR ±1/2°		MATERIAL NO. SEE TABLE		DOCUMENT NO. SDA-70431-****		SHEET NO. 2 OF 2																																																						
		1 PLACE ± ---	± ---	DRAFT WHERE APPLICABLE MUST REMAIN WITHIN DIMENSIONS		SIZE C		THIS DRAWING CONTAINS INFORMATION THAT IS PROPRIETARY TO MOLEX INCORPORATED AND SHOULD NOT BE USED WITHOUT WRITTEN PERMISSION																																																								
B																B																																																
A																A																																																
	12	11	10	9	8	7	6	5	4	3	2	1																																																				

Mouser Electronics

Authorized Distributor

Click to View Pricing, Inventory, Delivery & Lifecycle Information:

Molex:

15-47-5120