

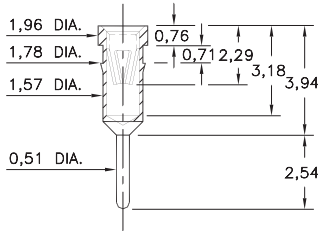
PIN RECEPTACLES

FOR 0,56 - 0,86 DIAMETER PINS AND 0,64 SQUARE PINS

9808

9808-0-15-XX-16-XX-04-0

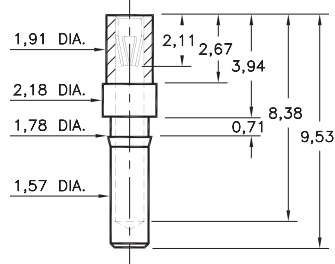
Press-fit in 1,70 mounting hole



9101

9101-0-15-XX-16-XX-10-0

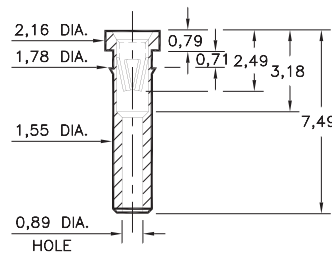
Press-fit in 1,70 mounting hole



5650

5650-0-19-XX-16-XX-10-0

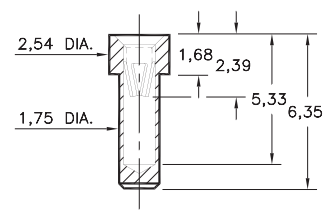
Press-fit in 1,70 mounting hole



8679

8679-0-15-XX-16-XX-10-0

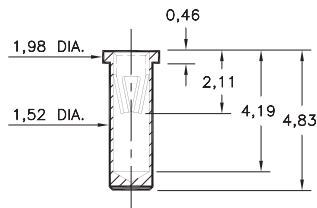
Solder mount in 1,80 min. mounting hole
Also available on 24mm wide carrier tape:
800 parts per 330mm reel
See page 194.8 for Tape & Reel details



6021

6021-0-15-XX-16-XX-10-0

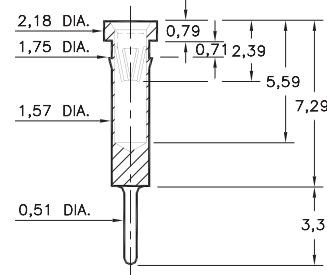
Solder mount in 1,57 min. mounting hole
Also available on 24mm wide carrier tape:
1,500 parts per 330mm reel
See page 194.8 for Tape & Reel details



1873

1873-0-15-XX-16-XX-04-0

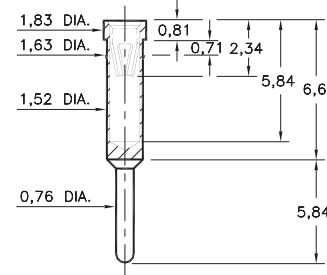
Press-fit in 1,68 mounting hole



8827

8827-0-15-XX-16-XX-04-0

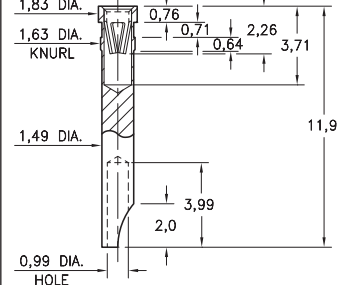
Press-fit in 1,55 mounting hole



5070

5070-0-18-XX-16-XX-10-0

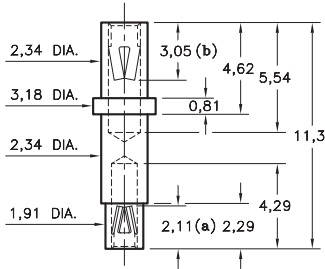
Press-fit in 1,55 mounting hole



7620

7620-0-34-XX-16-XX-10-0

Double Ended Receptacle. See chart for Contact number & acceptance ranges



Contact Number	Acceptance Range
----------------	------------------

(a) #16	0,56 - 0,86 and 0,64 □
(b) #34	0,81 - 1,17

(Data on Page 258)

SPECIFICATIONS:

Shell Material: Brass Alloy 360, 1/2 Hard

Contact Material: Beryllium Copper Alloy 172, HT

Dimensions: Millimeters

Tolerances On: Lengths: ±0,13

Diameters: ±0,051

Angles: ±2°



ORDER CODE: XXXX - X - XX - XX - 16 - XX - 10 - 0

BASIC PART #

SPECIFY SHELL FINISH:

- 01 5,08µm TIN/LEAD OVER NICKEL
- ◆ 80 5,08µm TIN OVER NICKEL (RoHS)
- ◆ 15 0,25µm GOLD OVER NICKEL (RoHS)

SPECIFY CONTACT FINISH:

- 01 5,08µm TIN/LEAD OVER NICKEL
- ◆ 80 5,08µm TIN OVER NICKEL (RoHS)
- ◆ 27 0,76µm GOLD OVER NICKEL (RoHS)

SELECT CONTACT:

#16 CONTACT (DATA ON PAGE 256)

(For alternate contact choices, see group D on page 248)



Mouser Electronics

Authorized Distributor

Click to View Pricing, Inventory, Delivery & Lifecycle Information:

[Mill-Max:](#)

[6021-0-15-15-16-27-10-0](#)