

# High contrast Q8 series

High contrast •  
Ø8 mm panel mount LED indicators



## DISTINCTIVE FEATURES

- 5 mm white diffused epoxy lens
- Prominent and flush bezel styles
- Wire terminations 200 mm



## ENVIRONMENTAL SPECIFICATIONS

- IP67 sealing option (EN60529)
- Operating & Storage Temperature Range:  
Rear epoxy body: -40 °C to +85 °C (-40 °F to +185 °F)



## GENERAL SPECIFICATIONS

- Max Reverse Voltage: 5 V
- Viewing Angle: 30–100° (dependant on model)
- Life Expectancy: 100,000 hours
- Torque: 20 to 25 cNm
- Maximum panel thickness 7 mm
- Insulation resistance : 4,000 MΩ at 500 VDC

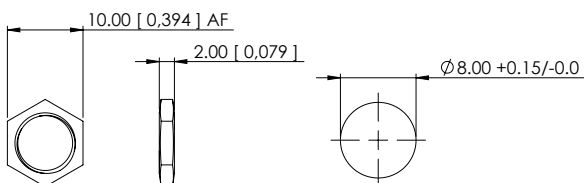


## MATERIALS

- Natural anodized bezels
- Black anodized bezels



## MOUNTING



The company reserves the right to change specifications without notice.

All LED characteristics are dependent upon environmental conditions. Therefore published data should be considered nominal and subject to variations.



# High contrast Q8 series

High contrast • Ø8 mm panel mount LED indicators



## ELECTRICAL SPECIFICATIONS

### LED COMPONENT SPECIFICATIONS

	Prominent	Forward voltage**	Flush	Forward voltage**
Red	60 mcd	2.0-2.2 V	1120 mcd	2.1 V
Green	100 mcd	2.0-2.2 V	2180 mcd	3.1 V
Yellow	100 mcd	2.0-2.2 V	1120 mcd	2.1 V
Blue	650 mcd	3.0-3.2 V	750 mcd	3.1 V

\*\*These values apply to 2 V option only

Voltage	Operating Voltage	Operating Current
	(Min to Max)	(Typical All Types)
02 (No Resistor)*	1.8 to 3.3 VDC	20 mA max
12 VDC	10.8 to 13.2 VDC	20 mA
24 VDC	21.6 to 26.4 VDC	20 mA
28 VDC	25.2 to 30.8 VDC	20 mA

\* Customer to supply resistor for desired operating current.

- The operating voltage must not be exceeded by more than 10% as this will result in reduced life expectancy
- Luminous intensity is measured at 20 mA on a discrete led unless otherwise stated.
- Luminous intensities and color shades may vary within a batch.
- Luminous intensity will be reduced with lower operating current.
- Recommended usage: Homogenous light output that is good for indoor and outdoor applications.

# High contrast Q8 series

High contrast • Ø8 mm panel mount LED indicators



## BUILD YOUR PART NUMBER

Q

SERIES

8

MOUNTING HOLE

8 Ø8 mm

—

BEZEL STYLE

P Prominent  
F Flush

5

TERMINALS

5 Rear epoxy Wires

—

BEZEL FINISH

AC Anodised Clear  
AN Anodised Black

XX

TYPE OF ILLUMINATION

XX Fixed Light

—

LED COLOR

CR Red  
CG Green  
CY Yellow  
CB Blue

—

VOLTAGE

02 No resistor  
12A 12 VAC/DC  
24A 24 VAC/DC  
28A 28 VAC/DC

E

SEALING

E IP67



## ABOUT THIS SERIES



**Notice:** please note that not all combinations of above numbers are available.

• Standard and Bi-Colour are provided in Standard wire length is 200mm, 24AWG UL1061, Red wire denotes anode (+), Black wire denotes cathode (-) for other lengths consult APEM.

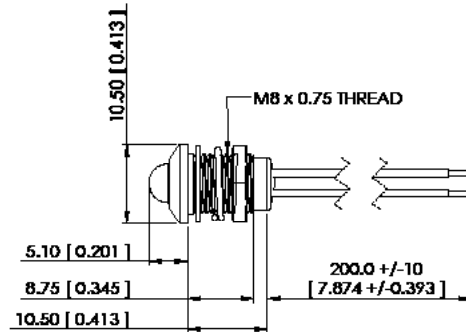
# High contrast Q8 series

High contrast • Ø8 mm panel mount LED indicators

## PROMINENT BEZEL



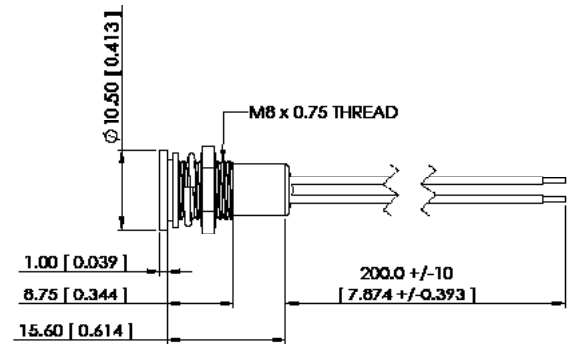
## REAR EPOXY WIRES



## FLUSH BEZEL



## REAR EPOXY WIRES



# Mouser Electronics

Authorized Distributor

Click to View Pricing, Inventory, Delivery & Lifecycle Information:

[Apem:](#)

[Q8P5ANXXCR24AE](#) [Q8P5ACXXCB02E](#) [Q8P5ANXXCG24AE](#) [Q8P5ACXXCG24AE](#) [Q8P5ANXXCB02E](#)  
[Q8P5ANXXCR12AE](#) [Q8P5ANXXCY24AE](#) [Q8P5ACXXCR12AE](#) [Q8P5ACXXCY12AE](#) [Q8P5ANXXCG12AE](#)  
[Q8P5ACXXCR24AE](#) [Q8P5ACXXCY02E](#) [Q8P5ANXXCR02E](#) [Q8P5ACXXCG12AE](#) [Q8P5ACXXCY24AE](#)  
[Q8P5ACXXCB12AE](#) [Q8P5ACXXCB24AE](#) [Q8P5ANXXCG02E](#) [Q8P5ACXXCG02E](#) [Q8P5ANXXCB24AE](#)  
[Q8P5ANXXCY02E](#) [Q8P5ANXXCY12AE](#) [Q8P5ACXXCR02E](#) [Q8P5ANXXCB12AE](#)