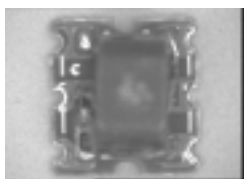


# M/A-COM E-Series 75 Ohm Coupler 5 - 1000 MHz

## Features

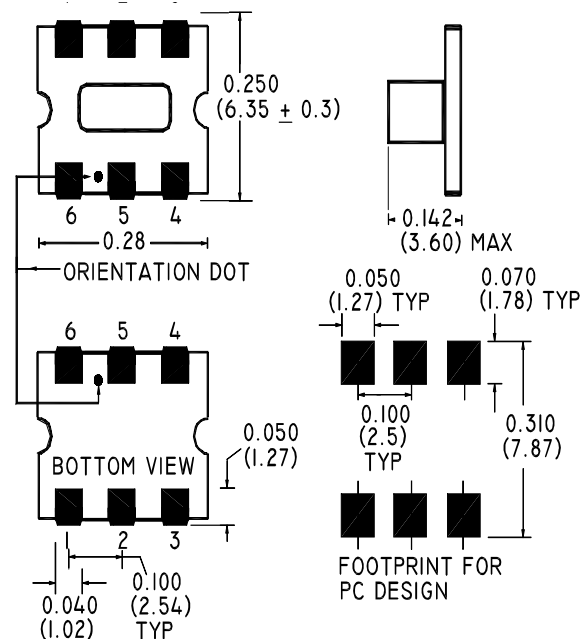
- Low Intermod Distortion
- Coupling 20db Typical
- Surface Mount
- Tape and Reel Packaging available



## Description

M/A-COM's MACPES0050 is a high performance 75 Ohm Coupler, in a SM-55 low cost, surface mount package. Ideally suited for high volume CATV applications.

## SM-55 Package



## Electrical Specifications @25°C

Frequency Range	5 - 870 MHz	Units	Nominal	Typical	Minimum	Maximum
Mainline Loss	5 - 500 MHz	dB	—	0.4	—	0.6
	500-860 MHz	dB	—	0.8	—	1.2
	860-1000 MHz	dB	—	1.2	—	1.4
Coupling	5 - 1000 MHz	dB	20	—	—	± 0.5
Coupling Flatness		dB	—	—	—	1.0
Isolation	5 - 500MHz	dB	—	37	30	—
	500-1000 MHz	dB	—	25	20	—
Input Return Loss	5 - 1000 MHz	dB	—	20	18	—
Output Return Loss	5 - 500 MHz	dB	—	25	20	—
	500-1000 MHz	dB	—	19	16	—
Coupled Return Loss	5 - 500 MHz	dB	—	25	20	—
	500-1000 MHz	dB	—	18	15	—

Please Note that the photograph above indicates package shape only, unit may be wired differently.

Specifications subject to change without notice.

S 1611 A

V 1.0

1

■ North America: Tel. (800) 366-2266, Fax (800) 618-8883

■ Asia/Pacific: Tel.+81-44-844-8296, Fax +81-44-844-8298

■ Europe: Tel. +44 (1344) 869 595, Fax+44 (1344) 300 020

Visit [www.macom.com](http://www.macom.com) for additional data sheets and product information.

tyco Electronics

M/A-COM

**Operating Characteristics**

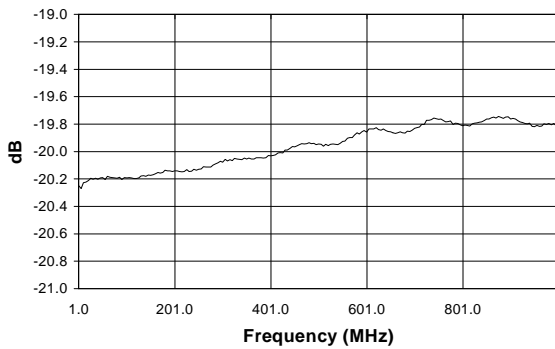
Function	Pin No.
Input	6
Output	1
Coupled	4
Ground	5
Not Connected	2
External 75 Ohms	3

**Absolute Maximum Ratings**

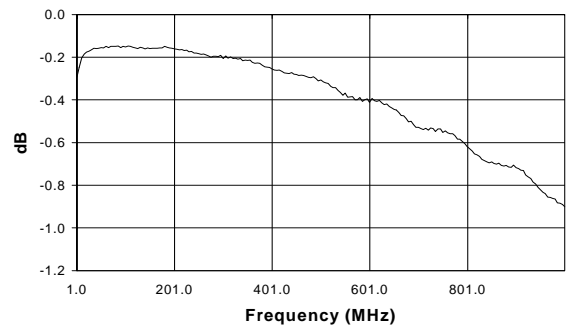
Parameter	Absolute Maximum
RF Power	250 mW
DC Current	30 mA
Operating/Storage Temperature	-40°C to +85°C

**Typical Performance @ 25°C**

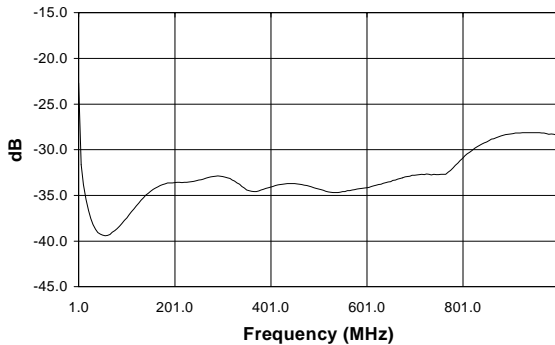
**Coupling**



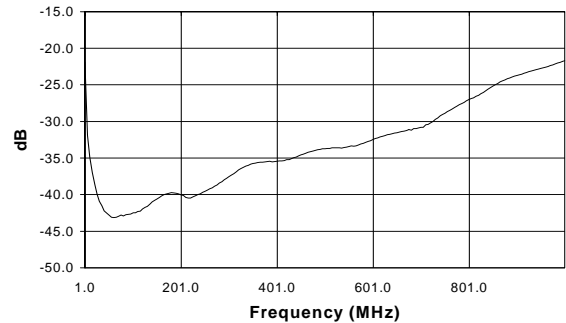
**Mainline Loss**



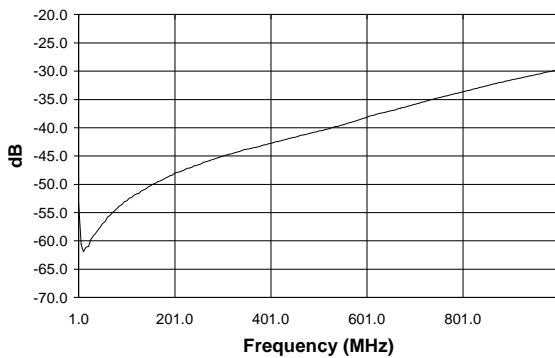
**Input Return Loss**



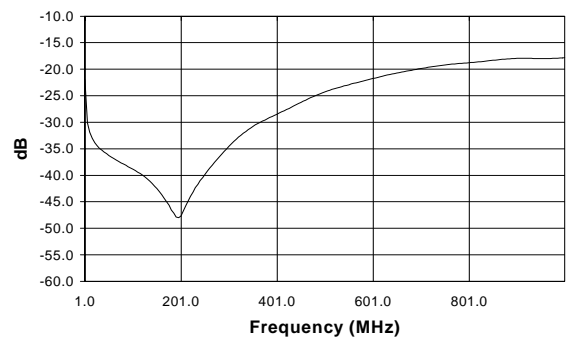
**Output Return Loss**



**Isolation**



**Coupling port Return Loss**



Specifications subject to change without notice.

S 1611 A

V 1.0

- North America: Tel. (800) 366-2266, Fax (800) 618-8883
- Asia/Pacific: Tel.+81-44-844-8296, Fax +81-44-844-8298
- Europe: Tel. +44 (1344) 869 595, Fax+44 (1344) 300 020

Visit [www.macom.com](http://www.macom.com) for additional data sheets and product information.



# Mouser Electronics

Authorized Distributor

Click to View Pricing, Inventory, Delivery & Lifecycle Information:

[MACOM:](#)

[MACPES0050](#)