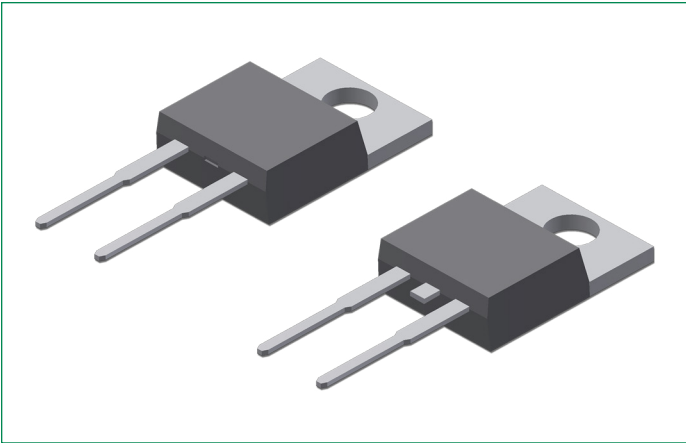


# DSA15I45PA

## 45 V, 15 A Schottky Rectifier Diode

RoHS

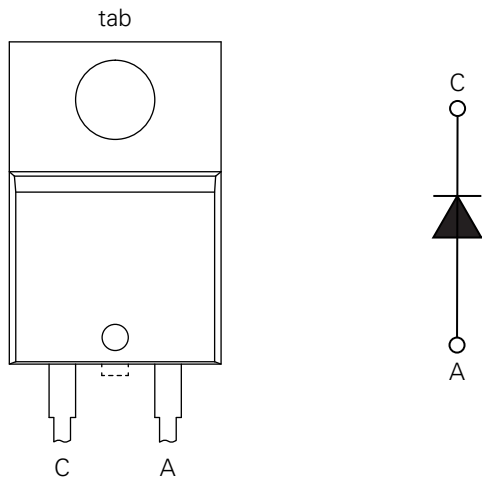
Pb



### Features & Benefits:

- Very low  $V_f$
- Extremely low switching losses
- Low  $I_{rm}$  values
- Improved thermal behavior
- High reliability circuit operation
- Low voltage peaks for reduced protection circuits
- Low noise switching
- Terminals finish: 100% Pure Tin
- This is a Pb – Free Device
- Epoxy meets UL 94V-0

### Pinout Diagram (TO-220AC)



**C:** Cathode; **A:** Anode; **tab:** Cathode

### Applications:

- Rectifiers in switch mode power supplies (SMPS)
- Free wheeling diode in low voltage converters

**Maximum Ratings** ( $T_A = 25^\circ\text{C}$  unless otherwise specified)

Symbol	Characteristics	Condition	Max.	Units
$V_{RRM}$	Peak Repetitive Reverse Voltage	-	45	V
$V_{RWM}$	Working Peak Reverse Voltage			
$V_R$	DC Blocking Voltage			
$I_{F(AV)}$	Average Rectified Forward Current	50% duty cycle @ $T_C = 155^\circ\text{C}$ , rectangular wave form	15	A
$I_{FSM}$	Peak One Cycle Non-Repetitive Surge Current	10 ms, Half Sine pulse, $T_J = 25^\circ\text{C}$	340	A
$P_{tot}$	Total power dissipation	$T_C = 25^\circ\text{C}$	85	W

**Electrical Characteristics** ( $T_A = 25^\circ\text{C}$  unless otherwise specified)

Symbol	Characteristics	Conditions	Typ.	Max.	Units
$V_{F1}$	Forward Voltage Drop <sup>1</sup>	@ 15A, Pulse, $T_J = 25^\circ\text{C}$	-	0.75	V
$V_{F1}$		@ 15A, Pulse, $T_J = 125^\circ\text{C}$	-	0.63	V
$I_{R1}$	Reverse Current*	@ $V_R = \text{rated } V_R$ , $T_J = 25^\circ\text{C}$	-	250	$\mu\text{A}$
$I_{R2}$		@ $V_R = \text{rated } V_R$ , $T_J = 125^\circ\text{C}$	-	2.5	mA
$C_T$	Junction Capacitance	@ $V_R = 5\text{V}$ , $T_C = 25^\circ\text{C}$ $f_{SIG} = 1\text{MHz}$	522	-	pF

**Note 1:** Pulse width < 300  $\mu\text{s}$ , duty cycle < 2%

**Thermal-Mechanical Specifications**

Symbol	Characteristics	Condition	Specification	Units
$T_J$	Junction Temperature	-	-55 to +175	$^\circ\text{C}$
$T_O$	Operation temperature	-	-55 to +150	$^\circ\text{C}$
$T_{stg}$	Storage Temperature	-	-55 to +150	$^\circ\text{C}$
$M_D$	Mounting torque	-	Min 0.4 Max 0.6	Nm
$F_C$	Mounting force with clip	-	Min 20 Max 60	N
$R_{\theta JC}$	Maximum Thermal Resistance Junction to Case	DC operation	1.75	$^\circ\text{C/W}$
$R_{\theta CS}$	Typical Thermal Resistance Case to Heat Sink	-	0.5	$^\circ\text{C/W}$
wt	Approximate Weight	-	1.6	g

Characteristic Curves

Fig. 1. Typical Forward Characteristics

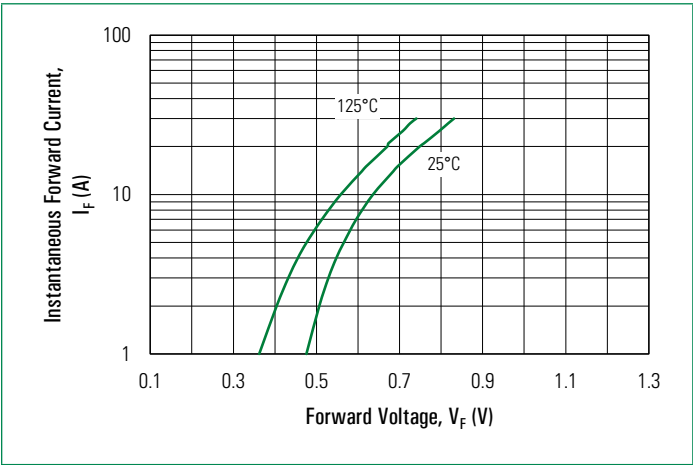


Fig. 2. Typical Reverse Characteristics

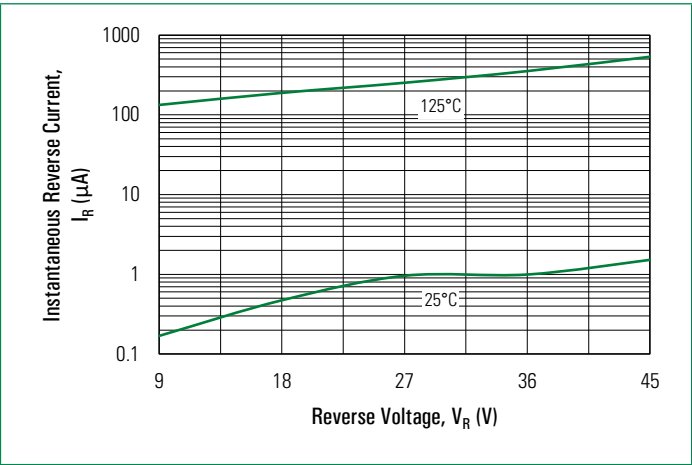
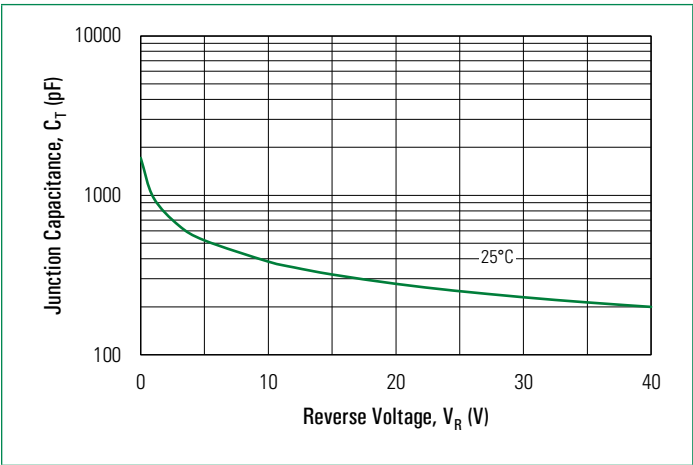
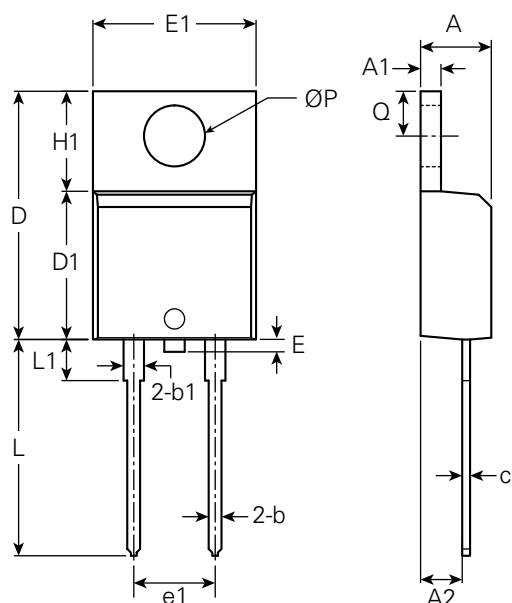


Fig. 3. Typical Junction Capacitance

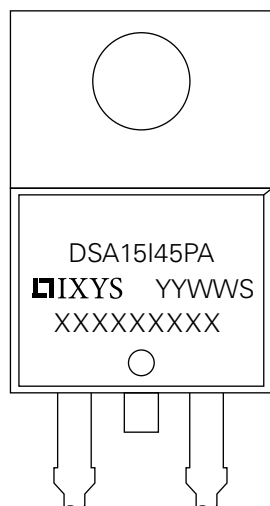


## Part Outline Drawing (TO-220AC)



Symbol	Inches			Millimeters		
	Min.	Typical	Max.	Min.	Typical	Max.
A	0.14	–	0.19	3.56	–	4.83
A1	0.02	–	0.06	0.51	–	1.40
A2	0.08	–	0.11	2.03	–	2.92
b	0.01	–	0.04	0.38	–	1.02
b1	0.04	–	0.07	1.14	–	1.78
c	0.12	–	0.02	0.31	–	0.61
D	0.56	–	0.65	14.22	–	16.51
D1	0.33	–	0.37	8.38	–	9.42
E	–	–	0.07	–	–	1.78
E1	0.38	0.40	0.42	9.65	10.16	10.67
e1	–	0.20	–	–	5.08	–
H1	0.23	–	0.27	5.84	–	6.86
L	0.50	–	0.58	12.70	–	14.73
L1	–	–	0.25	–	–	6.35
Q	0.10	–	0.135	2.54	–	3.43
ØP	–	0.14	–	–	3.56	–

## Part Number and Marking

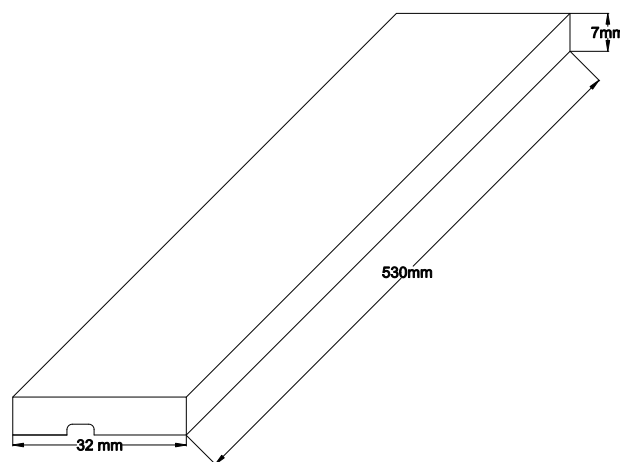


D = Diode  
 S = Schottky Diode  
 A = Product Generation  
 15 = Current Rating  
 I = Single Part  
 45 = Voltage Rating  
 PA = Package Code  
 YY = Year  
 WW = Work Week  
 S = Plant Location Code  
 XXXXXXXXX = Lot Number

## Ordering Information

Part Number	Marking	Packing Mode	Quantity
DSA15I45PA	DSA15I45PA	Tube	50 pcs/ tube

## Packing Specifications



**Disclaimer Notice** - Information furnished is believed to be accurate and reliable. However, users should independently evaluate the suitability of and test each product selected for their own applications. Littelfuse products are not designed for, and may not be used in, all applications. Read complete Disclaimer Notice at <http://www.littelfuse.com/disclaimer-electronics>.

# Mouser Electronics

Authorized Distributor

Click to View Pricing, Inventory, Delivery & Lifecycle Information:

[IXYS:](#)

[DSA15I45PA](#)