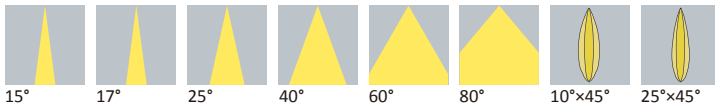




Datasheet

NE Series

Available Distribution

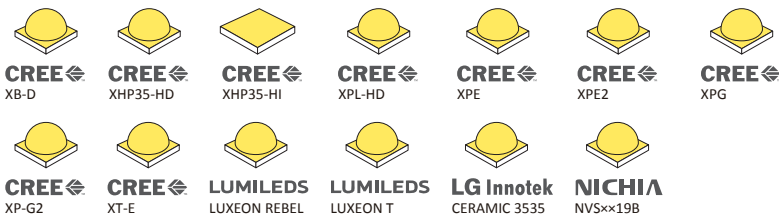


Dimensions

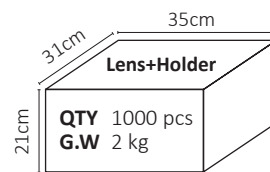
Part Number	Diameter	Height
LL01CR-NExxL06	Ø19.4	14.7
LL01CR-NExxL06-M2	Ø23.5	15.8
LL01CR-CNExxL06-M2-T	Ø23.5	15.8
LL01CR-KDxxL06-M2	Ø19.5	17.1
LL01NI-NExxL06-M2-T	Ø21.4	15.8

*All dimensions are in millimeters.

LED



Packaging Details (SPQ)



Recommand Applications



General Information



- Lens Material PMMA 8N
- Operating Temperature -40°C~+70°C
- Light Transmission Rate 400nm~900nm > 90%
- ☑ If necessary, Clean lenses with mild soap, water and soft cloth.
- ⚠ Never use any commercial cleaning solvents on lenses, like alcohol.
- ⚠ Please handle or install lenses with wearing gloves, skin oils may damage lens or its optical characteristic.

Accessories

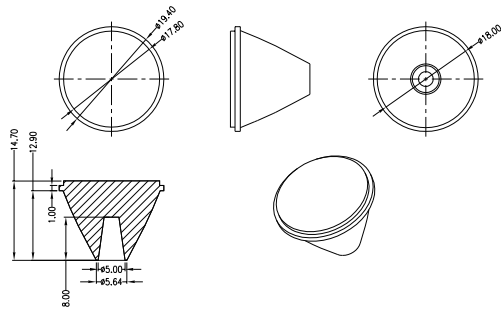


- 4 Different Types of Holder
LL01CRKI25H2
LL01CRPP15H2
LL01CRKD30H2
LL01NIUD10H2
- 2 Different Types of Tape
LL01A00XUNX
LL01A00AYDXX

Mechanical Specification

*All dimensions are in millimeters.

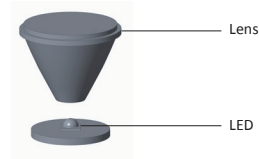
Lens Dimension



Assembly Instruction

Fixing Method

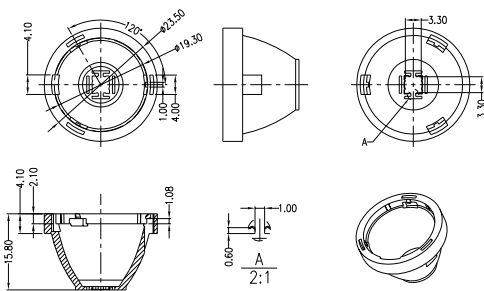
Part No LL01CR-NExxL06



Holder Dimension



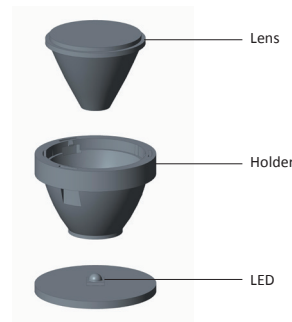
LL01CRKI25H2



Assembly Instruction

Fixing Method

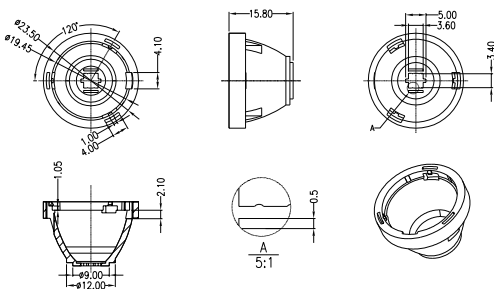
Part No LL01CR-NExxL06-M2
Holder LL01CRKI25H2



Holder Dimension



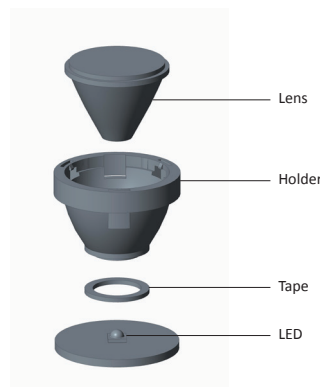
LL01CRPP15H2



Assembly Instruction

Fixing Method

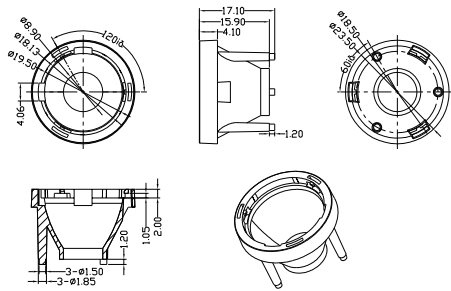
Part No LL01CR-CNExxL06-M2-T
Holder LL01CRPP15H2
Tape LL01A00XUNX



Holder Dimension



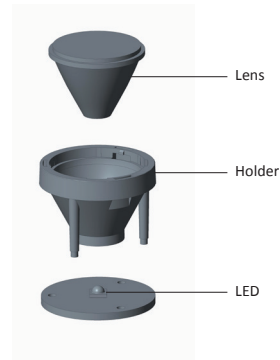
LL01CRKD30H2



Assembly Instruction

Fixing Method

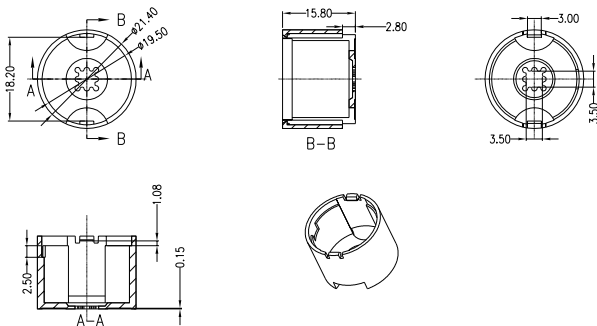
Part No LL01CR-KDxxL06-M2
Holder LL01CRKD30H2



Holder Dimension



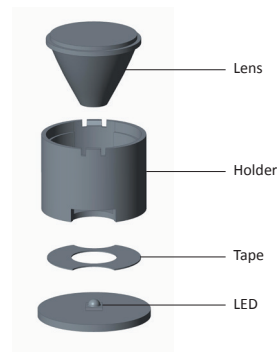
LL01NIUD10H2



Assembly Instruction

Fixing Method

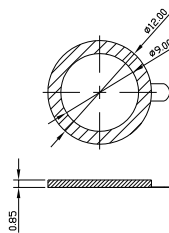
Part No LL01NI-NExxL06-M2-T
Holder LL01NIUD10H2
Tape LL01A00AYDXX



Tape Dimension



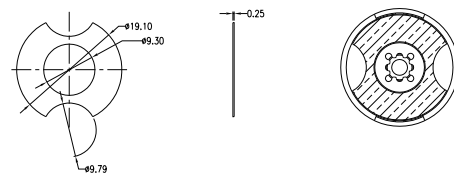
LL01A00XUNX



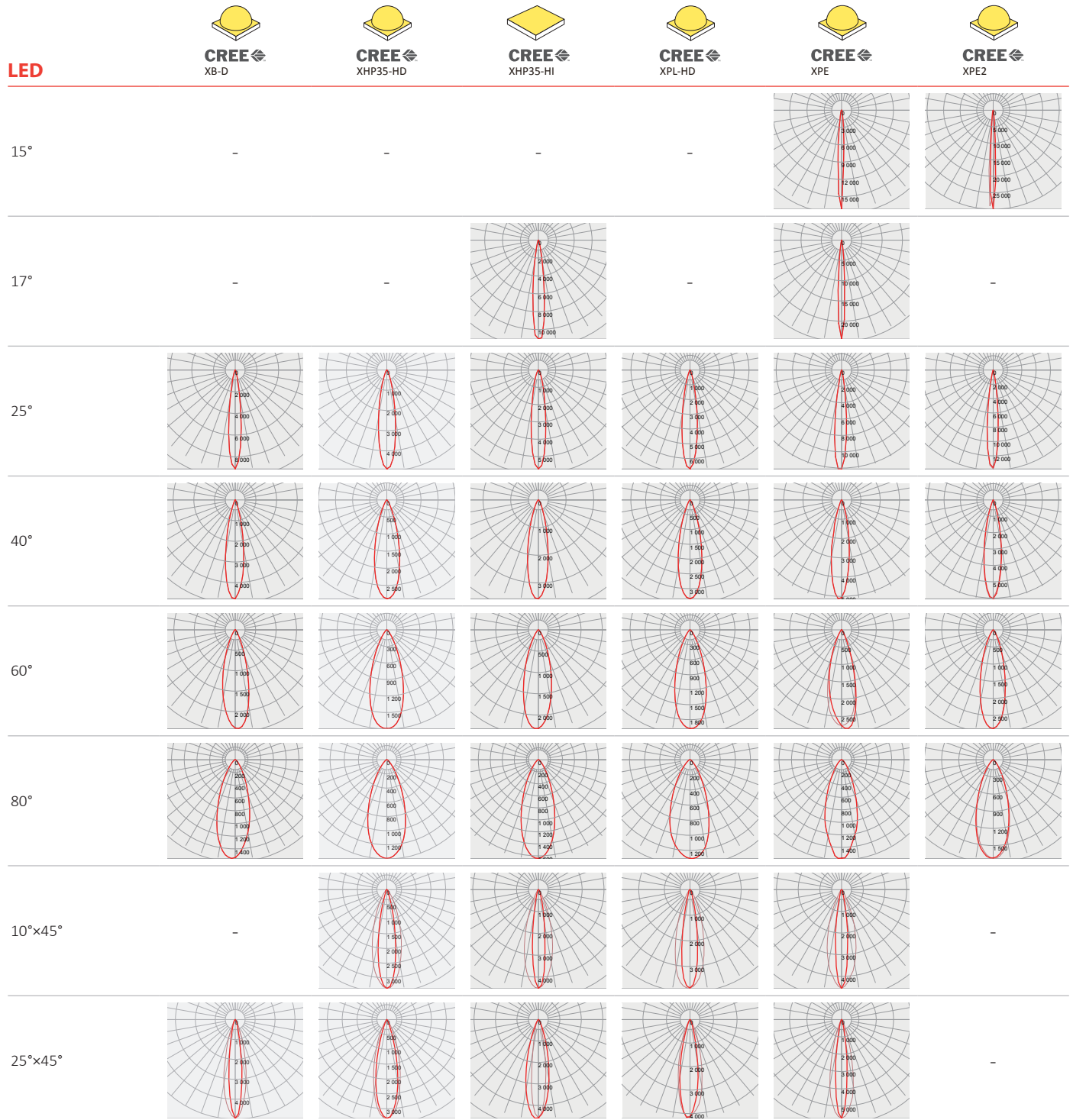
Tape Dimension



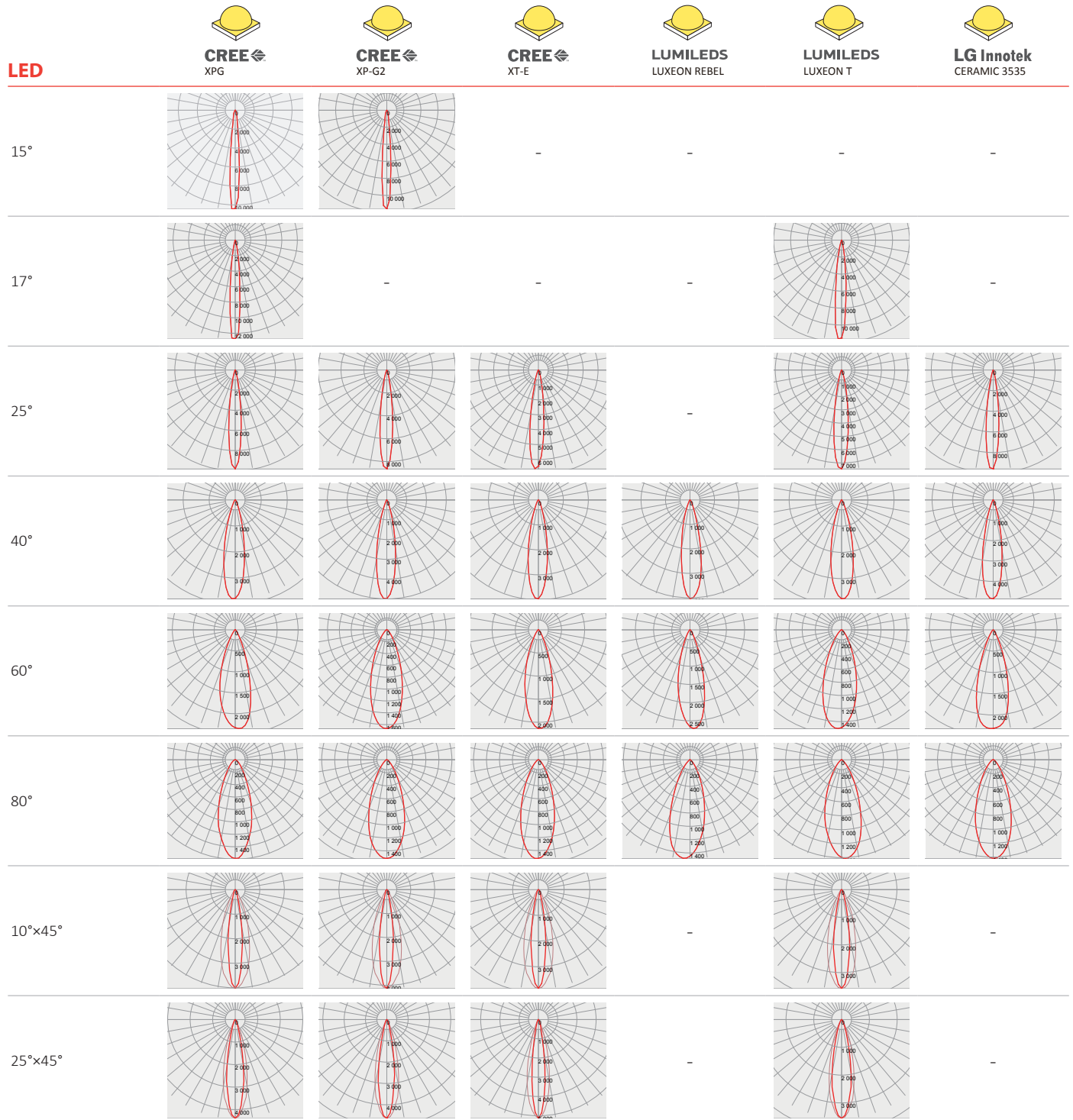
LL01A00AYDXX



Photometric Distribution



Photometric Distribution



Photometric Distribution

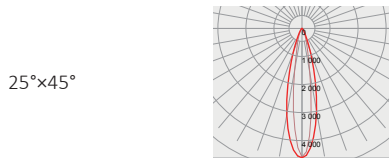
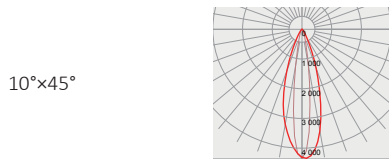
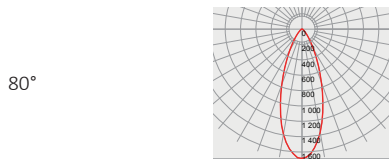
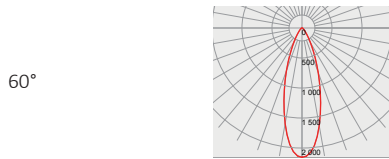
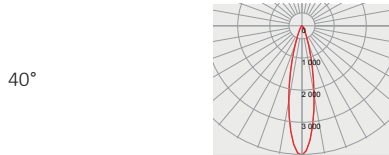


NICHIA
NVS××19B



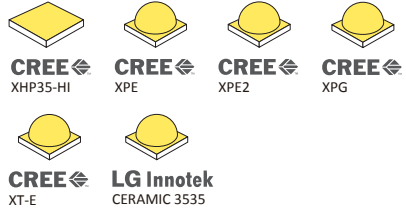







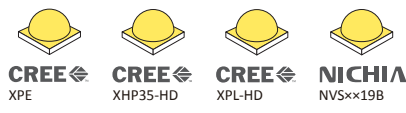
LED





15° -



17° -










Details by LED

Part No	Holder	Tape	LED Package Size	LED
LL01CR-NE××L06	-	-	2525 / 3146 / 3737	 CREE XB-D LUMILEDS LUXEON REBEL LUMILEDS LUXEON T
LL01CR-NE××L06-M2	 LL01CRKI25H2	-	3535	 CREE XHP35-HI CREE XPE CREE XPE2 CREE XPG CREE XT-E LG Innotek CERAMIC 3535
LL01CR-CNE××L06-M2-T	 LL01CRPP15H2	 LL01A00XUNX	3535	 CREE XPE CREE XP-G2
LL01CR-KD××L06-M2	 LL01CRKD30H2	-	3535	 CREE XPE CREE XPG
LL01NI-NE××L06-M2-T	 LL01NIUD10H2	 LL01A00AYDXX	3535	 CREE XPE CREE XHP35-HD CREE XPL-HD NICHIA NVS××19B

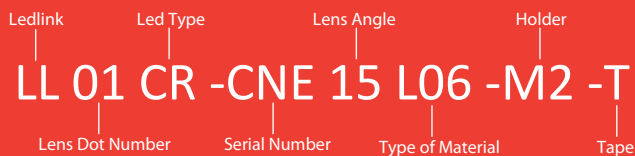
LED	Part No	FWHM	cd / lm	IES
 CREE XB-D	LL01CR-NE15L06	-	-	-
	LL01CR-NE17L06	-	-	-
	LL01CR-NE25L06	14°	9.1	↓
	LL01CR-NE40L06	20°	4.7	↓
	LL01CR-NE60L06	29°	2.4	↓
	LL01CR-NE80L06	37°	1.5	↓
	LL01CR-NE1045L06	-	-	-
	LL01CR-NE2545L06	15°×25°	4.9	↓
 CREE XHP35-HD	LL01NI-NE15L06-M2-T	-	-	-
	LL01NI-NE17L06-M2-T	-	-	-
	LL01NI-NE25L06-M2-T	19°	4.8	↓
	LL01NI-NE40L06-M2-T	28°	2.8	↓
	LL01NI-NE60L06-M2-T	37°	1.7	↓
	LL01NI-NE80L06-M2-T	42°	1.3	↓
	LL01NI-NE1045L06-M2-T	19°×33°	3.3	↓
	LL01NI-NE2545L06-M2-T	24°×30°	3.3	↓
 CREE XHP35-HI	LL01CR-NE15L06-M2	-	-	-
	LL01CR-NE17L06-M2	13°	11.0	↓
	LL01CR-NE25L06-M2	16°	5.7	↓
	LL01CR-NE40L06-M2	23°	3.5	↓
	LL01CR-NE60L06-M2	32°	2.3	↓
	LL01CR-NE80L06-M2	38°	1.6	↓
	LL01CR-NE1045L06-M2	14°×32°	4.5	↓
	LL01CR-NE2545L06-M2	26°×16°	4.6	↓
 CREE XPL-HD	LL01NI-NE15L06-M2-T	-	-	-
	LL01NI-NE17L06-M2-T	-	-	-
	LL01NI-NE25L06-M2-T	17°	6.6	↓
	LL01NI-NE40L06-M2-T	26°	3.3	↓
	LL01NI-NE60L06-M2-T	35°	1.9	↓
	LL01NI-NE80L06-M2-T	44°	1.3	↓
	LL01NI-NE1045L06-M2-T	17°×32°	3.8	↓
	LL01NI-NE2545L06-M2-T	20°×27°	4.1	↓

LED	Part No	FWHM	cd / lm	IES
 CREE XPE	LL01CR-NE15L06-M2	6°	17.1	↓
	LL01CR-NE17L06-M2	7°	24.3	↓
	LL01CR-NE25L06-M2	13°	12.0	↓
	LL01CR-NE40L06-M2	20°	5.1	↓
	LL01CR-NE60L06-M2	30°	2.8	↓
	LL01CR-NE80L06-M2	37°	1.5	↓
	LL01CR-NE1045L06-M2	14°×32°	4.5	↓
	LL01CR-NE2545L06-M2	13°×25°	5.7	↓
	LL01NI-NE15L06-M2-T	6°	24.8	↓
	LL01NI-NE17L06-M2-T	7°	31.1	↓
	LL01NI-NE25L06-M2-T	10°	17.0	↓
	LL01NI-NE40L06-M2-T	19°	6.6	↓
	LL01NI-NE60L06-M2-T	28°	2.8	↓
	LL01NI-NE80L06-M2-T	37°	1.6	↓
	LL01NI-NE1045L06-M2-T	14°×32°	4.4	↓
	LL01NI-NE2545L06-M2-T	13°×25°	6.1	↓
	LL01CR-CNE15L06-M2-T	6°	18.6	↓
	LL01CR-CNE17L06-M2-T	7°	24.3	↓
	LL01CR-CNE25L06-M2-T	13°	12.0	↓
	LL01CR-CNE40L06-M2-T	20°	5.1	↓
	LL01CR-CNE60L06-M2-T	30°	2.8	↓
	LL01CR-CNE80L06-M2-T	37°	1.5	↓
	LL01CR-CNE1045L06-M2-T	14°×32°	4.5	↓
	LL01CR-CNE2545L06-M2-T	13°×25°	5.7	↓
	LL01CR-KD15L06-M2	-	-	-
	LL01CR-KD17L06-M2	7°	24.3	↓
	LL01CR-KD25L06-M2	13°	12.0	↓
	LL01CR-KD40L06-M2	20°	5.1	↓
LL01CR-KD60L06-M2	30°	2.8	↓	
LL01CR-KD80L06-M2	37°	1.5	↓	
LL01CR-KD1045L06-M2	14°×32°	4.5	↓	
LL01CR-KD2545L06-M2	13°×25°	5.7	↓	
 CREE XPE2	LL01CR-NE15L06-M2	6°	29.9	↓
	LL01CR-NE17L06-M2	-	-	-
	LL01CR-NE25L06-M2	12°	13.8	↓
	LL01CR-NE40L06-M2	20°	6.0	↓
	LL01CR-NE60L06-M2	28°	2.8	↓
	LL01CR-NE80L06-M2	37°	1.7	↓
	LL01CR-NE1045L06-M2	-	-	-
	LL01CR-NE2545L06-M2	-	-	-

LED	Part No	FWHM	cd / lm	IES
	LL01CR-NE15L06-M2	10°	10.1	↓
	LL01CR-NE17L06-M2	11°	12.7	↓
	LL01CR-NE25L06-M2	14°	9.8	↓
	LL01CR-NE40L06-M2	23°	3.7	↓
	LL01CR-NE60L06-M2	34°	2.3	↓
	LL01CR-NE80L06-M2	38°	1.5	↓
	LL01CR-NE1045L06-M2	16°×32°	4.0	↓
	LL01CR-NE2545L06-M2	19°×26°	4.3	↓
	LL01CR-KD15L06-M2	10°	10.4	↓
	LL01CR-KD17L06-M2	11°	12.7	↓
	LL01CR-KD25L06-M2	14°	9.8	↓
	LL01CR-KD40L06-M2	23°	3.7	↓
	LL01CR-KD60L06-M2	34°	2.3	↓
	LL01CR-KD80L06-M2	38°	1.5	↓
	LL01CR-KD1045L06-M2	16°×32°	4.0	↓
	LL01CR-KD2545L06-M2	19°×26°	4.3	↓
	LL01CR-CNE15L06-M2-T	10°	11.5	↓
	LL01CR-CNE17L06-M2-T	-	-	-
	LL01CR-CNE25L06-M2-T	14°	8.6	↓
	LL01CR-CNE40L06-M2-T	21°	4.9	↓
	LL01CR-CNE60L06-M2-T	36°	1.6	↓
	LL01CR-CNE80L06-M2-T	40°	1.5	↓
	LL01CR-NE15L06-M2	-	-	-
	LL01CR-NE17L06-M2	-	-	-
	LL01CR-NE25L06-M2	15°	6.6	↓
	LL01CR-NE40L06-M2	22°	3.9	↓
	LL01CR-NE60L06-M2	31°	2.1	↓
	LL01CR-NE80L06-M2	38°	1.5	↓
	LL01CR-NE1045L06-M2	17°×33°	3.8	↓
	LL01CR-NE2545L06-M2	15°×25°	5.1	↓
	LL01CR-NE15L06	-	-	-
	LL01CR-NE17L06	-	-	-
	LL01CR-NE25L06	-	-	-
	LL01CR-NE40L06	22°	4.0	↓
	LL01CR-NE60L06	29°	2.7	↓
	LL01CR-NE80L06	39°	1.4	↓
	LL01CR-NE1045L06	-	-	-
	LL01CR-NE15L06	-	-	-
	LL01CR-NE17L06	12°	11.6	↓
	LL01CR-NE25L06	16°	7.4	↓
	LL01CR-NE40L06	25°	3.7	↓
	LL01CR-NE60L06	38°	1.5	↓
	LL01CR-NE80L06	41°	1.4	↓
	LL01CR-NE1045L06	18°×32°	3.5	↓
	LL01CR-NE2545L06	21°×28°	3.5	↓

LED	Part No	FWHM	cd / lm	IES	
	LL01CR-NE15L06-M2	-	-	-	
	LL01CR-NE17L06-M2	-	-	-	
	LL01CR-NE25L06-M2	14°	9.5	↓	
	LL01CR-NE40L06-M2	22°	4.8	↓	
	LL01CR-NE60L06-M2	34°	2.3	↓	
	LL01CR-NE80L06-M2	40°	1.4	↓	
	LL01CR-NE1045L06-M2	-	-	-	
	LL01CR-NE2545L06-M2	-	-	-	
		LL01NI-NE15L06-M2-T	-	-	-
		LL01NI-NE17L06-M2-T	-	-	-
LL01NI-NE25L06-M2-T		14°	6.2	↓	
LL01NI-NE40L06-M2-T		22°	4.0	↓	
LL01NI-NE60L06-M2-T		32°	2.1	↓	
LL01NI-NE80L06-M2-T		37°	1.6	↓	
LL01NI-NE1045L06-M2-T		32°×14°	4.3	↓	
LL01NI-NE2545L06-M2-T		25°×15°	4.6	↓	

Product Nomenclature



Ledlink Optics, Inc

Taiwan HQ

15F, No.655, Bannan Rd., Chung-Ho Dist.,
New Taipei City, Taiwan 235

Ledlink Optics (Dongguan) Co., Ltd

Dongguan Factory

No.5, TianKeng Industrial Dist., HengLiTown, DongGuan City,
GuangDong Province, China 523478

Ledlink Optics (Yangzhou) Co., Ltd

Yangzhou Factory

No.180, LinJiang Rd., YangZhou City, Jiangsu Province, China 225009

www.ledlink-optics.com

service@ledlink-optics.com



Mouser Electronics

Authorized Distributor

Click to View Pricing, Inventory, Delivery & Lifecycle Information:

[LedLink Optics:](#)

[LL01CR-NE80L06-M2](#) [LL01CR-NE25L06-M2](#) [LL01CR-NE40L06-M2](#) [LL01CR-NE15L06-M2](#) [LL01CR-KD80L06-M2](#)
[LL01CR-KD15L06-M2](#) [LL01CR-CNE25L06-M2-T](#) [LL01CR-CNE40L06-M2-T](#) [LL01CR-CNE2545L06-M2-T](#) [LL01CR-](#)
[NE17L06-M2](#) [LL01CR-NE1045L06-M2](#) [LL01CR-NE25L06](#) [LL01CR-NE80L06](#) [LL01CR-KD25L06-M2](#) [LL01CR-](#)
[KD60L06-M2](#) [LL01CR-NE60L06](#) [LL01CR-CNE1045L06-M2-T](#) [LL01CR-CNE80L06-M2-T](#) [LL01NI-NE25L06-M2-T](#)
[LL01CR-NE17L06](#) [LL01CR-NE2545L06](#) [LL01CR-NE15L06](#) [LL01NI-NE2545L06-M2-T](#) [LL01CR-CNE60L06-M2-T](#)
[LL01CR-KD17L06-M2](#) [LL01NI-NE40L06-M2-T](#) [LL01CR-KD2545L06-M2](#) [LL01NIBNE3570L06-M2-T](#) [LL01CR-](#)
[CNE17L06-M2-T](#) [LL01CR-NE1045L06](#) [LL01NI-NE15L06-M2-T](#) [LL01NI-NE17L06-M2-T](#) [LL01NI-NE60L06-M2-T](#)
[LL01CR-CNE15L06-M2-T](#) [LL01CR-KD1045L06-M2](#) [LL01CR-NE2545L06-M2](#) [LL01NI-NE1045L06-M2-T](#) [LL01NI-](#)
[NE80L06-M2-T](#) [LL01CR-KD40L06-M2](#) [LL01CR-NE40L06](#) [LL01CR-NE60L06-M2](#) [LL01CR-CNE2545L06-M2](#)