

CORAL-IP-OW

115 + 6° oval beam

SPECIFICATION:

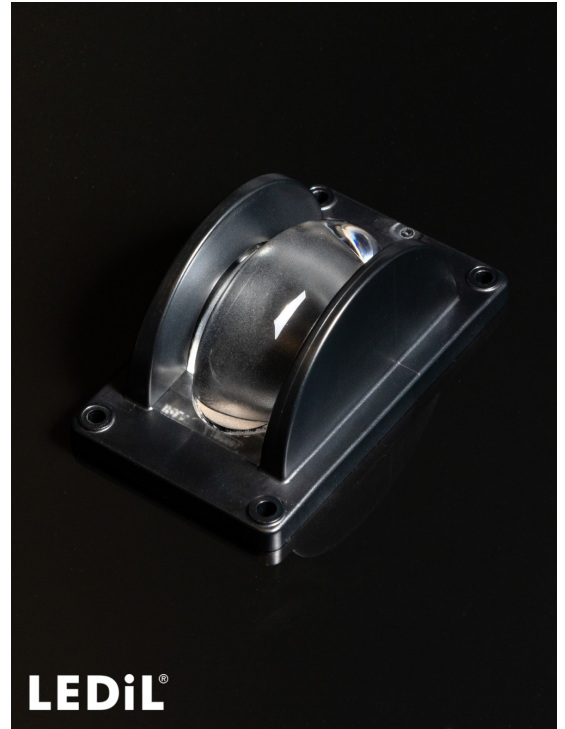
Dimensions	74.5 x 44.5
Height	32 mm
Ingress protection classes	IP66,IP67
ROHS compliant	yes ⓘ

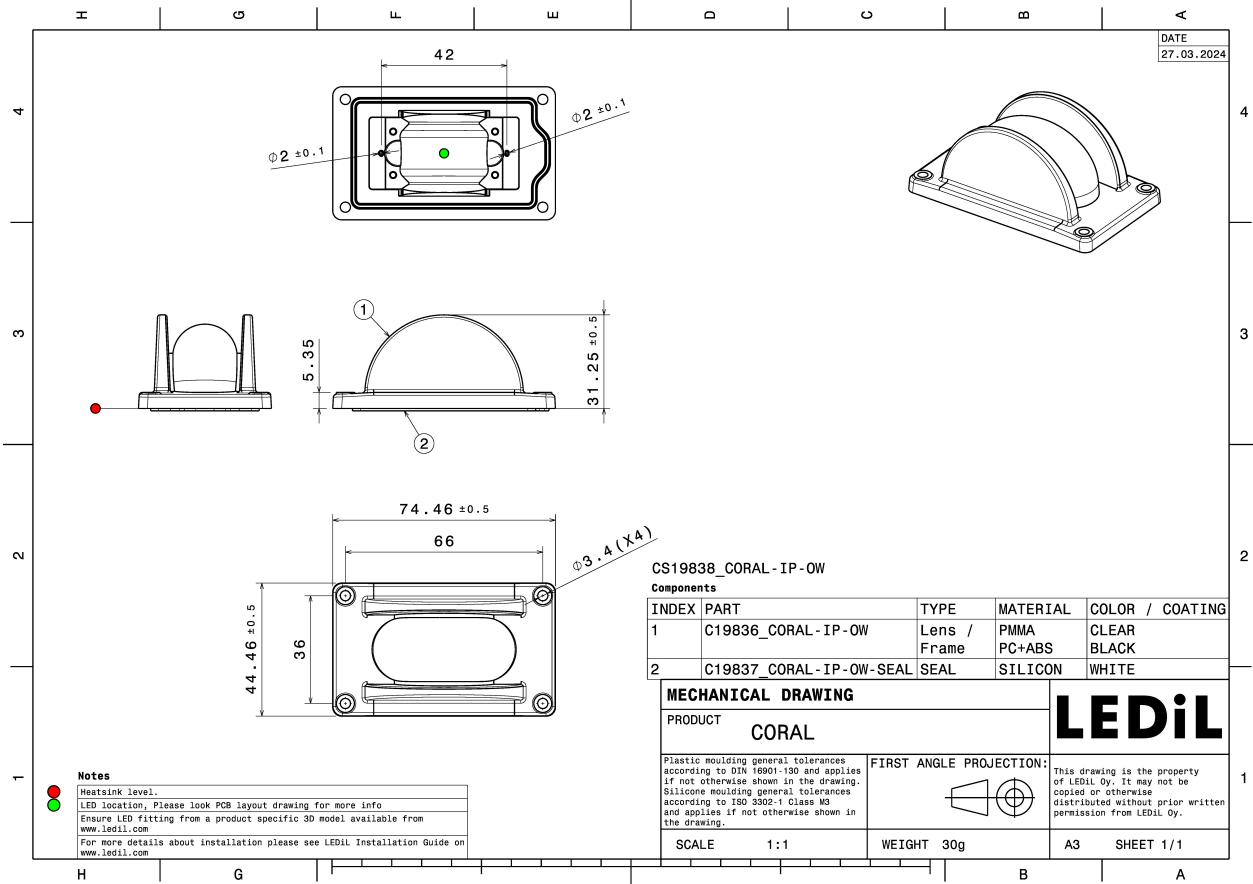
MATERIALS:

Component	Type	Material	Colour	Finish	Length (mm)
CORAL-IP-OW	Single lens	PC-ABS			
CORAL-IP-OW-SEAL	Seal	Silicone	white		

ORDERING INFORMATION:

Component	Qty in box	MOQ	MPQ	Box weight (kg)
CS19838_CORAL-IP-OW » Box size: 480 x 280 x 260 mm	180	180	180	6.4





See also our general installation guide: www.ledil.com/installation_guide

OPTICAL RESULTS (SIMULATED):

bridgelux

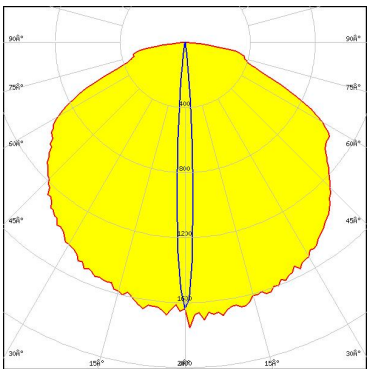
LED	CSP 2727 (BXCP)
FWHM / FWTM	111.0 + 8.0° / 154.0 + 14.0°
Efficiency	53 %
Peak intensity	1.8 cd/lm
LEDs/each optic	6
Light colour/type	White
Required components:	



Light distribution files

CREE LEDs

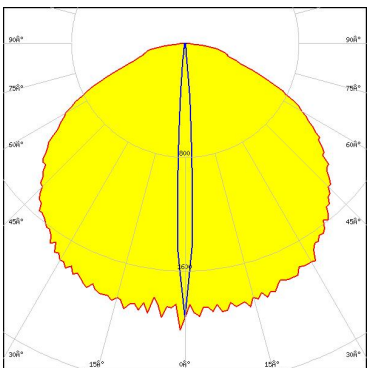
LED	XB-D
FWHM / FWTM	122.0 + 6.0° / 164.0 + 14.0°
Efficiency	48 %
Peak intensity	1.8 cd/lm
LEDs/each optic	4
Light colour/type	RGBW
Required components:	



Light distribution files

CREE LEDs

LED	XE-G
FWHM / FWTM	116.0 + 6.0° / 162.0 + 12.0°
Efficiency	53 %
Peak intensity	2.1 cd/lm
LEDs/each optic	4
Light colour/type	White
Required components:	

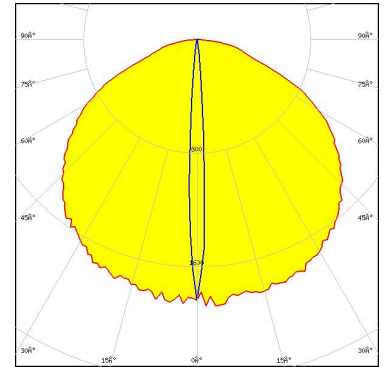


Light distribution files

OPTICAL RESULTS (SIMULATED):



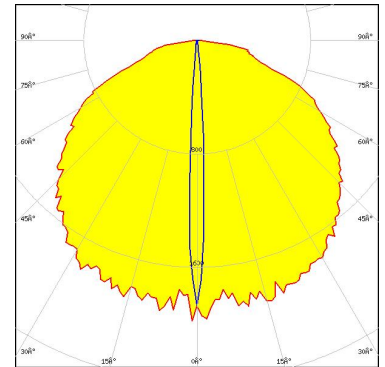
LED XE-G
FWHM / FWTM 119.0 + 6.0° / 161.0 + 14.0°
Efficiency 52 %
Peak intensity 1.9 cd/lm
LEDs/each optic 4
Light colour/type RGBW
Required components:



Light distribution files



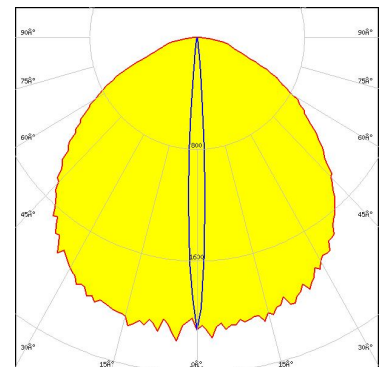
LED XE-G
FWHM / FWTM 120.0 + 6.0° / 164.0 + 13.0°
Efficiency 52 %
Peak intensity 2.1 cd/lm
LEDs/each optic 1
Light colour/type White
Required components:



Light distribution files



LED XP-E2
FWHM / FWTM 107.0 + 6.0° / 158.0 + 13.0°
Efficiency 54 %
Peak intensity 2.2 cd/lm
LEDs/each optic 1
Light colour/type White
Required components:

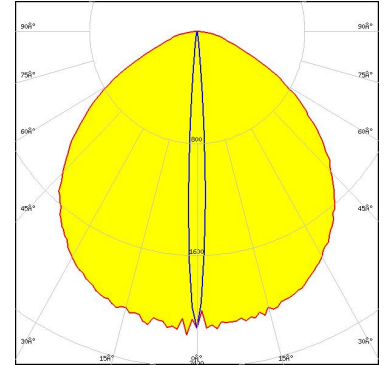


Light distribution files

OPTICAL RESULTS (SIMULATED):



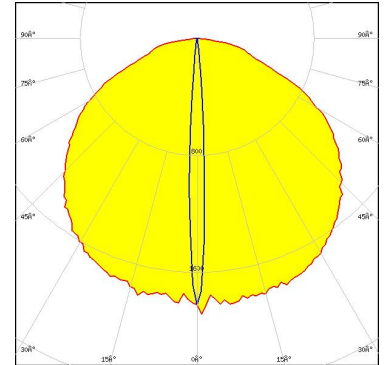
LED XP-E2
FWHM / FWTM 106.0 + 6.0° / 148.0 + 12.0°
Efficiency 55 %
Peak intensity 2.2 cd/lm
LEDs/each optic 4
Light colour/type White
Required components:



Light distribution files



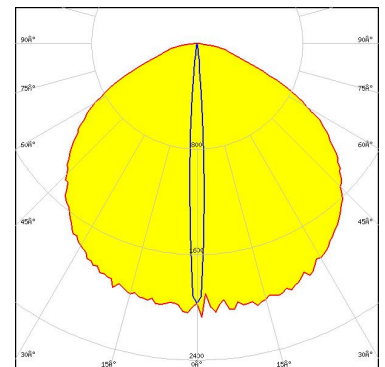
LED XQ-E HI
FWHM / FWTM 117.0 + 6.0° / 162.0 + 13.0°
Efficiency 51 %
Peak intensity 1.9 cd/lm
LEDs/each optic 4
Light colour/type RGBW
Required components:



Light distribution files



LED LUXEON CZ
FWHM / FWTM 115.0 + 6.0° / 157.0 + 12.0°
Efficiency 53 %
Peak intensity 2.2 cd/lm
LEDs/each optic 4
Light colour/type RGBW
Required components:

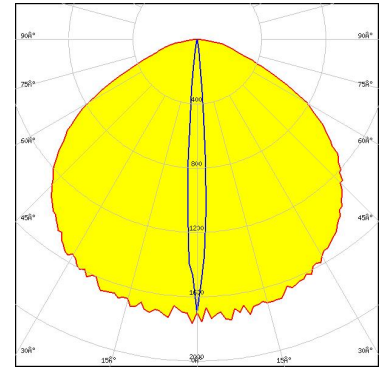


Light distribution files

OPTICAL RESULTS (SIMULATED):



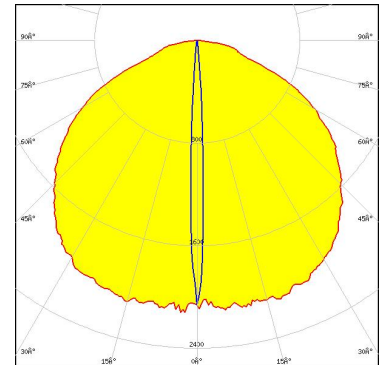
LED LUXEON HL4Z
FWHM / FWTM 115.0 + 8.0° / 156.0 + 14.0°
Efficiency 53 %
Peak intensity 1.8 cd/lm
LEDs/each optic 4
Light colour/type White
Required components:



Light distribution files



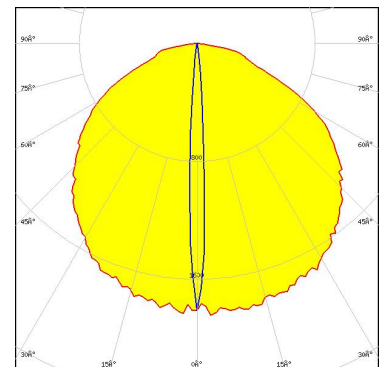
LED LUXEON Rubix
FWHM / FWTM 119.0 + 5.0° / 160.5 + 11.0°
Efficiency 50 %
Peak intensity 2.2 cd/lm
LEDs/each optic 4
Light colour/type RGBW
Required components:



Light distribution files

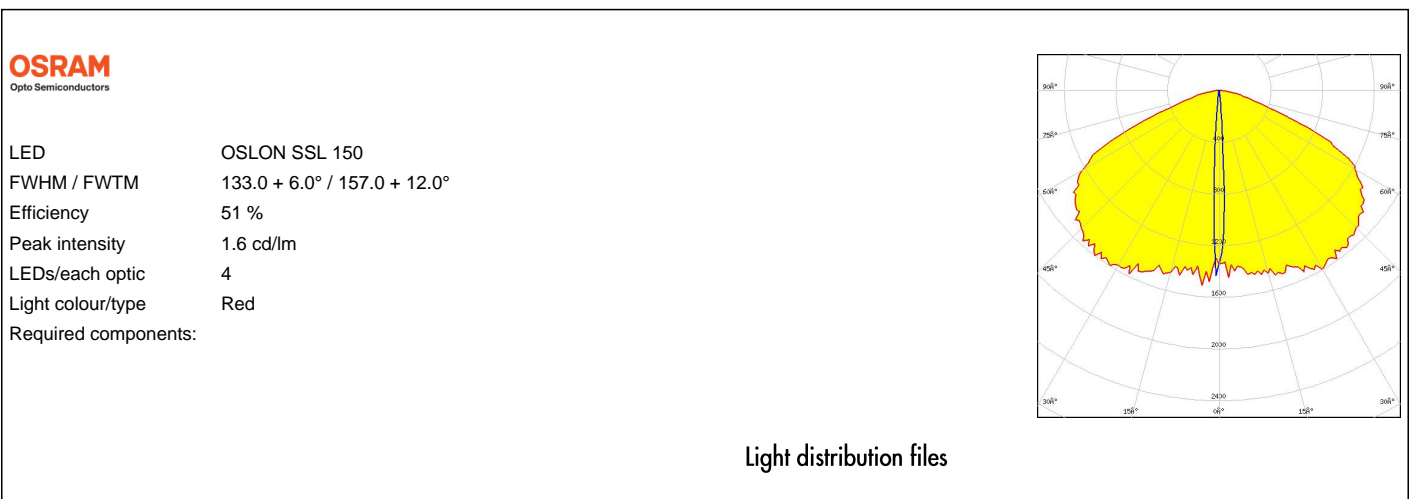
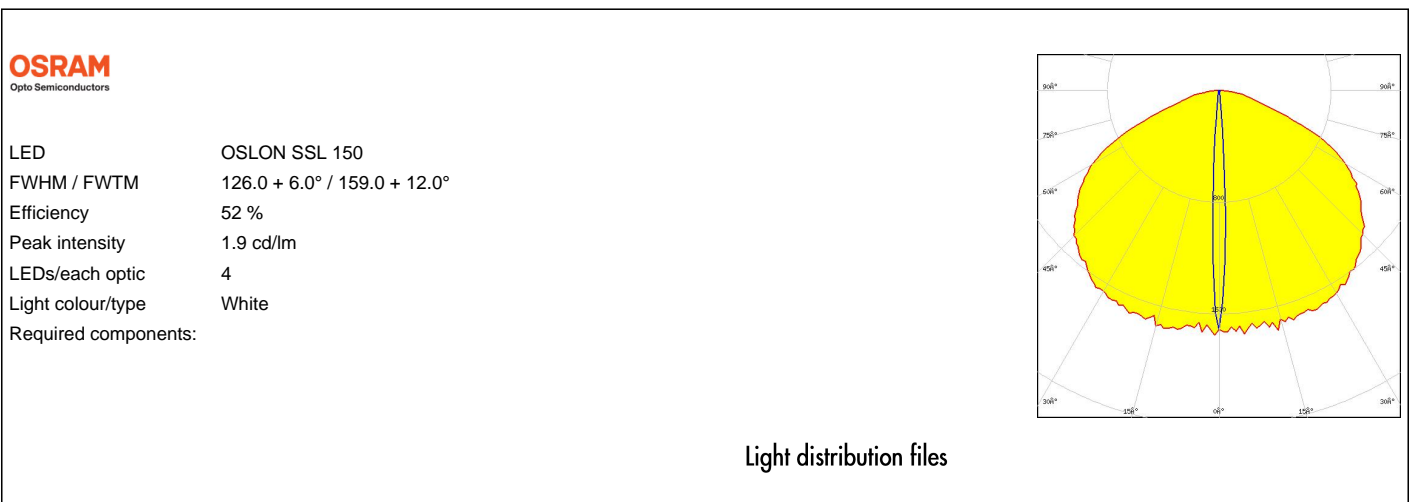
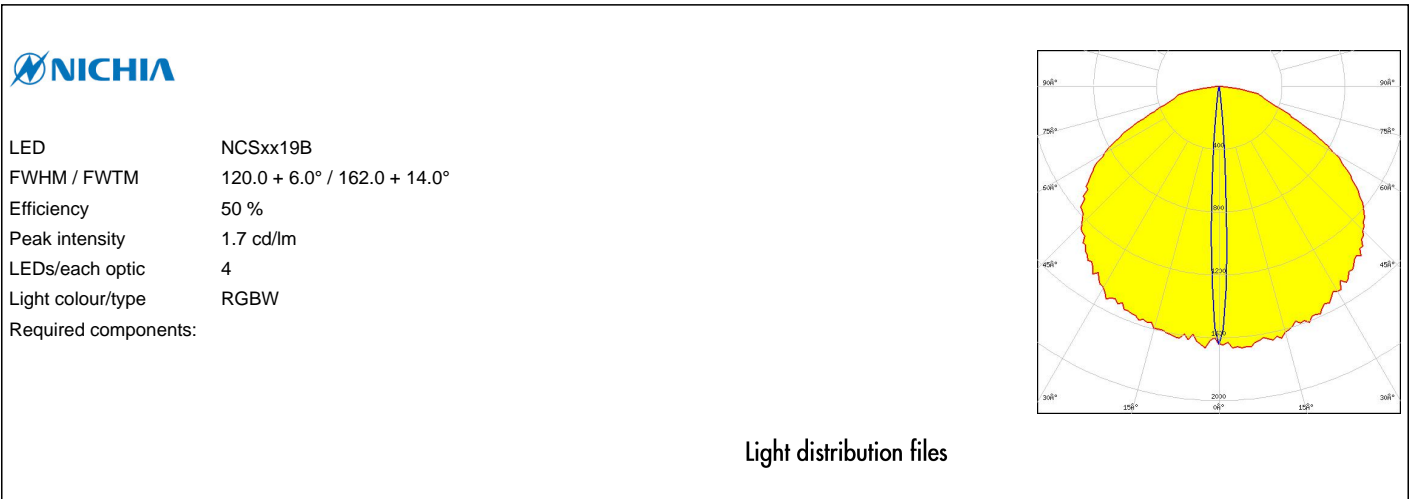


LED NCSxE17A
FWHM / FWTM 115.0 + 6.0° / 160.0 + 12.0°
Efficiency 49 %
Peak intensity 1.9 cd/lm
LEDs/each optic 4
Light colour/type RGBW
Required components:



Light distribution files

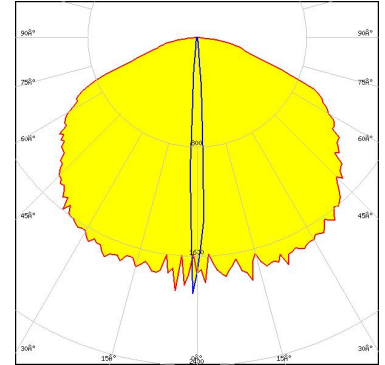
OPTICAL RESULTS (SIMULATED):



OPTICAL RESULTS (SIMULATED):

OSRAM
Opto Semiconductors

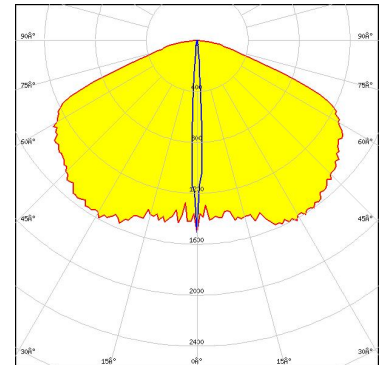
LED OSLON SSL 150
FWHM / FWTM 131.0 + 6.0° / 162.0 + 12.0°
Efficiency 51 %
Peak intensity 1.9 cd/lm
LEDs/each optic 1
Light colour/type White
Required components:



Light distribution files

OSRAM
Opto Semiconductors

LED OSLON SSL 150
FWHM / FWTM 137.0 + 6.0° / 161.0 + 12.0°
Efficiency 49 %
Peak intensity 1.6 cd/lm
LEDs/each optic 1
Light colour/type Red
Required components:



Light distribution files

GENERAL INFORMATION:

NOTE: The typical beam angle will be changed by different color, chip size and chip position tolerance. The typical total beam angle is the full angle measured where the luminous intensity is half of the peak value.

MATERIALS:

As part of our continuous research and improvement processes, and to ensure the best possible quality and availability of our products, LEDiL reserves the right to change material grades without notice.

PRODUCT DATA USER AGREEMENT AND DISCLAIMER:

The measured data in the provided downloadable LEDiL Product Datasheets and Mechanical 2D-Drawings is rounded and provided as reference for planning. LEDiL Oy's optical specifications have been verified by conducting performance testing of the products in accordance with the company's quality system. The reported data are averaged results of multiple measurements with typical variation. LEDiL Oy reserves the right to without prior notification make changes and improvements to its products.

LEDiL Oy assumes neither warranty, nor guarantee nor any other liability of any kind for the contents and correctness of the provided data. The provided data has been generated with highest diligence but the provided data may in reality not represent the complete possible variation range of all intrinsic parameters. Therefore, in certain cases a deviation from the provided data could occur.

LEDiL Oy reserves the right to undertake technical changes of its products without further notification which could lead to changes in the provided data. LEDiL Oy assumes no liability of any kind for the possible deviation from any provided data or any other damage resulting from the usage of the provided data.

The user agrees to this disclaimer and user agreement with the download or usage of the provided files.

LEDiL Oy

Joensuunkatu 7
FI-24240 SALO
Finland

LEDiL Inc.

228 West Page Street
Suite D
Sycamore IL 60178
USA

Ledil Optics Technology (Shenzhen) Co., Ltd.

405 , Block B
Casic Motor Building
Shenzhen 518057
P.R.CHINA

Local sales and technical support

[www.ledil.com/
where_to_buy](http://www.ledil.com/where_to_buy)

Shipping locations

Poznan, Poland
Hong Kong, China

Distribution Partners

[www.ledil.com/
where_to_buy](http://www.ledil.com/where_to_buy)

Mouser Electronics

Authorized Distributor

Click to View Pricing, Inventory, Delivery & Lifecycle Information:

[Ledil:](#)

[CS19838_CORAL-IP-OW](#)